

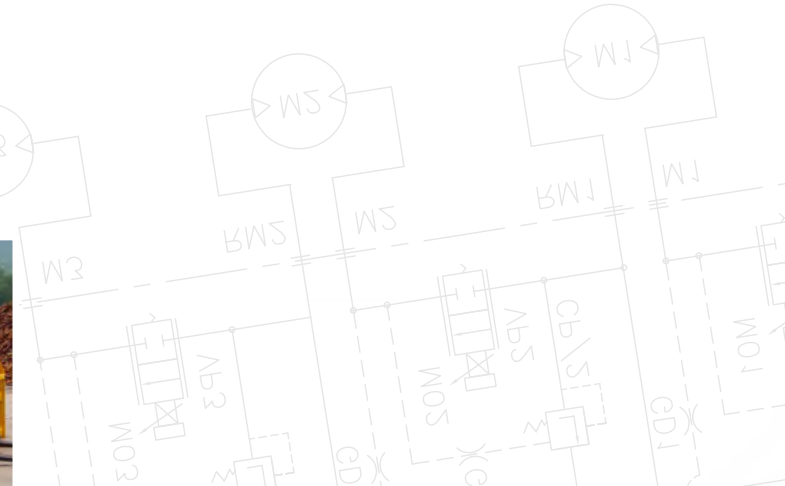


FIELDS OF EXPERTISE  
**APPLICATION EXAMPLES**

*JUNE 2016*

**TECNORD**

SERVOCOMANDI E REGOLAZIONE



**HARVESTERS** ..... page 3

**SEED DRILLS** ..... page 4

**FORK LIFTS** ..... page 5

**AERIAL PLATFORMS** ..... page 10

**RIMMERS & STRIPPERS** ..... page 14

**CRANES** ..... page 15

**EDGE CUTTERS** ..... page 18

**SALT SPREADERS** ..... page 19

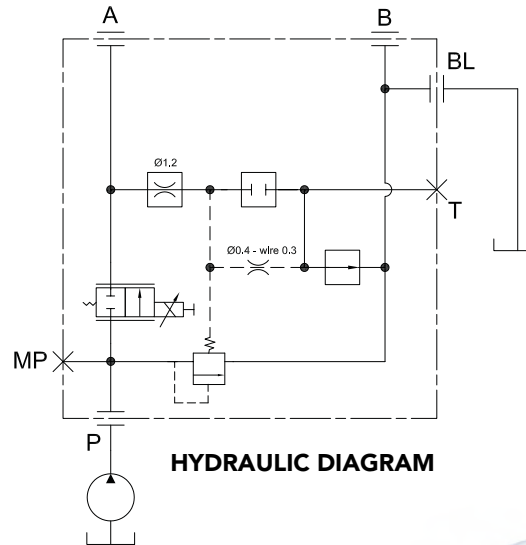
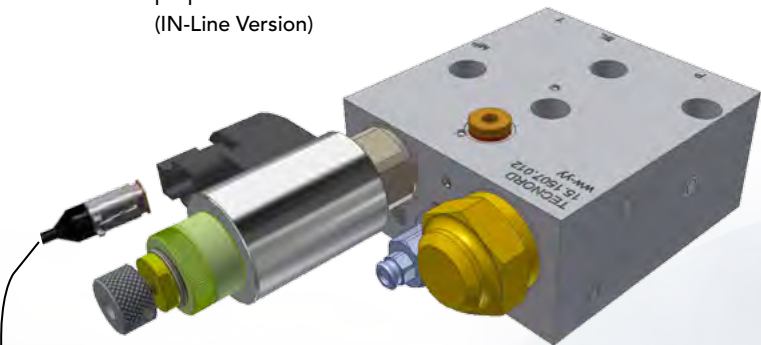
**TELEHANDLERS** ..... page 20

**CRAWLER VEHICLES** ..... page 22

## VALV-O-MATIC SINGLE-FUNCTION CONTROL VALVE

IN-LINE 3 WAY, PRESSURE COMPENSATED  
PROPORTIONAL FLOW CONTROL VALVE

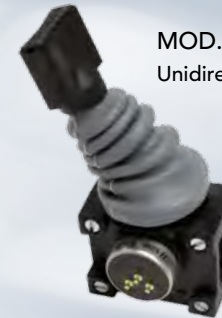
**MOD. RFP-3WPC-E\_2A-ILV**  
3 way, pressure compensated  
proportional flow control valve  
(IN-Line Version)



**MOD. EC-PWM-A1-MPC1**  
Single channel PWM driver



**MOD. FTC-L1S**  
Unidirectional control lever



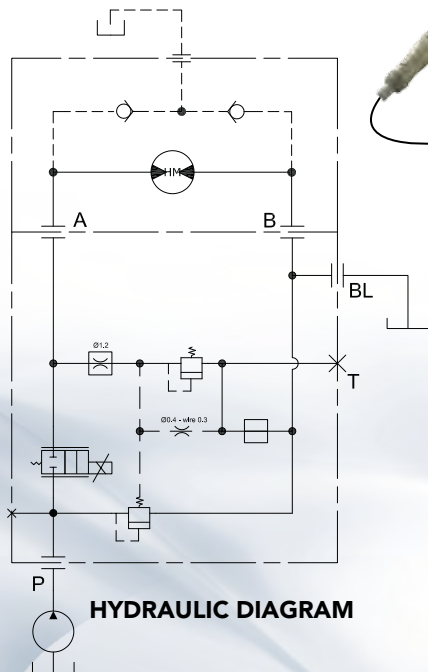
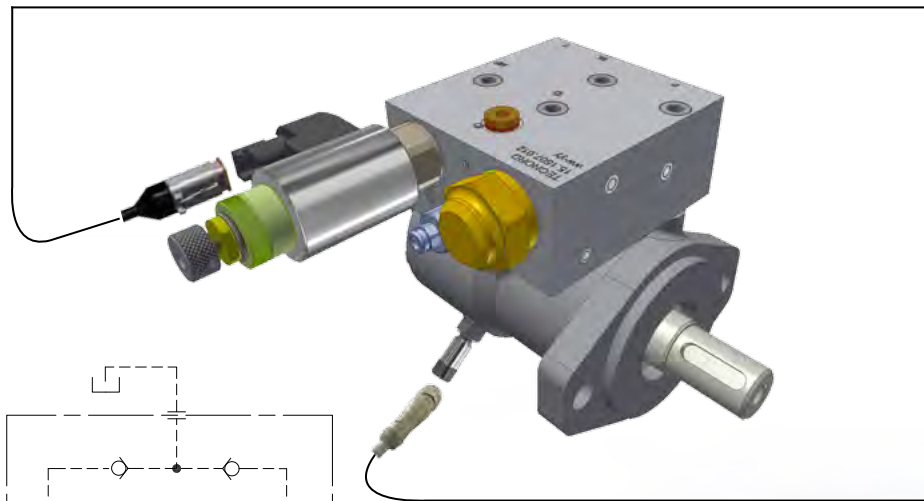
+V  
-V

HARVESTERS

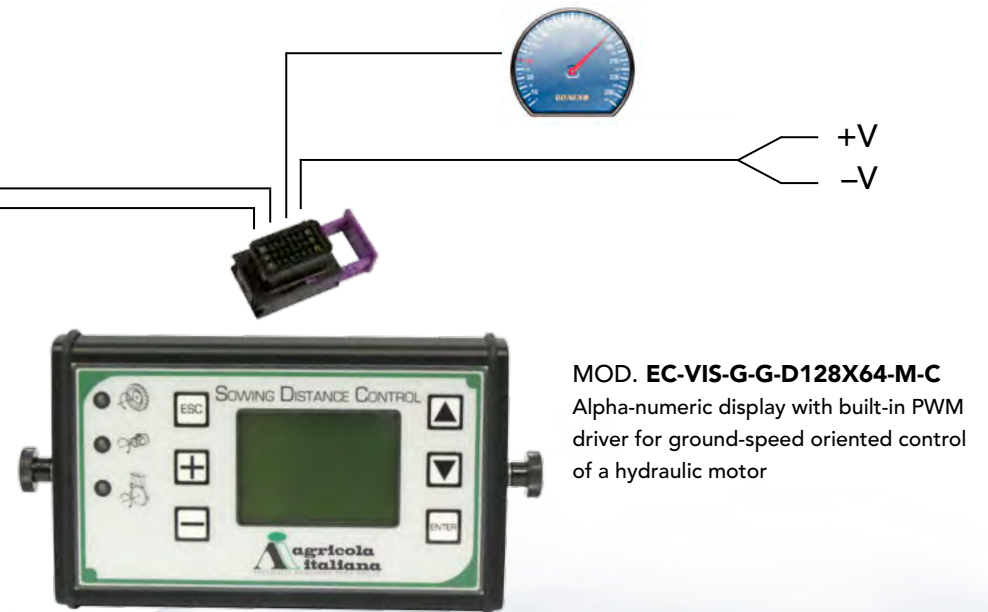


## VALV-O-MATIC SINGLE-FUNCTION CONTROL VALVE

FLANGE-MOUNTED 3 WAY, PRESSURE COMPENSATED  
PROPORTIONAL FLOW CONTROL VALVE



**MOD. RFP-3WPC-E\_2A-FLV**  
3 way, pressure compensated  
proportional flow control valve  
(FLANGED version)



SEEDER



## VALV-O-MATIC SINGLE-FUNCTION CONTROL VALVE

FLANGE-MOUNTED 2 WAY OR 3 WAY LIFT & LOWER  
ELECTRO-HYDRAULIC PROPORTIONAL CONTROL FOR STACKERS



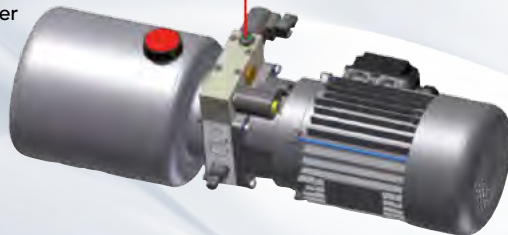
Proportional roller switch  
for manual lift & lower control

Lift & lower electronic  
control and PWM driver



Power unit  
and proportional  
control  
manifold block

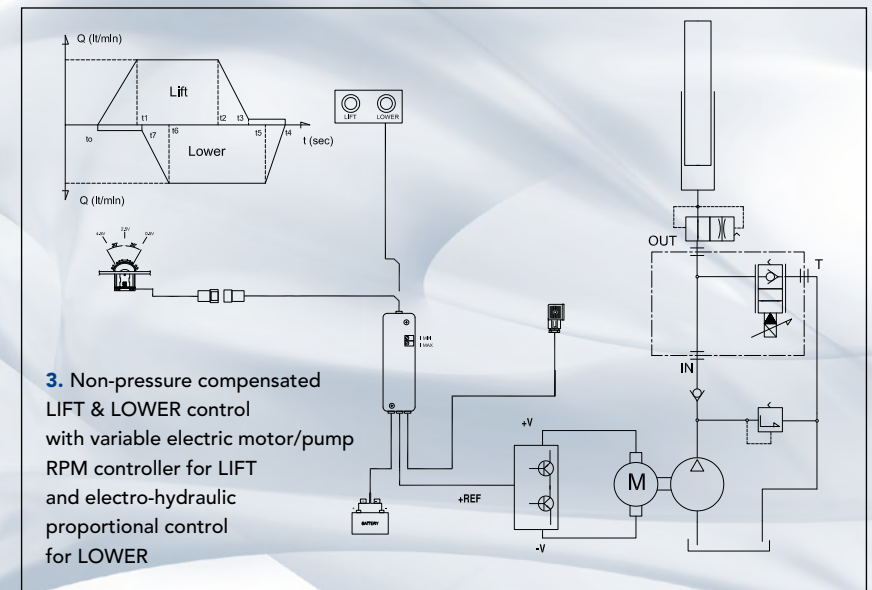
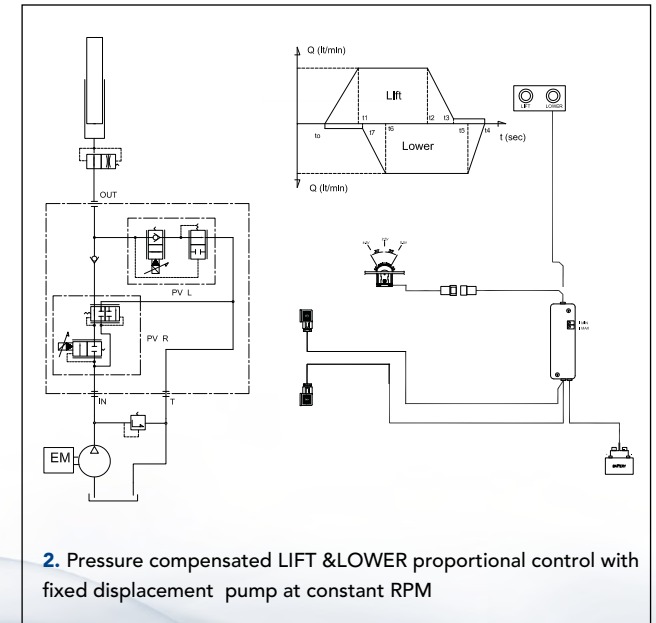
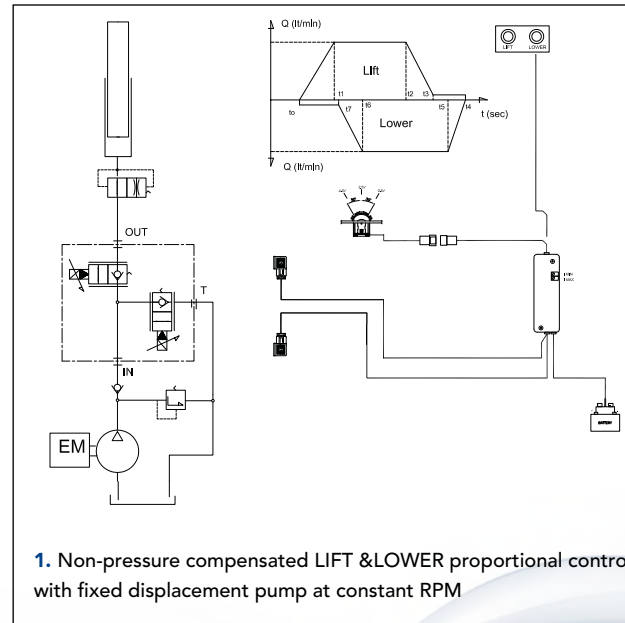
Single effect  
mast cylinder



STACKER



## HYDRAULIC DIAGRAM



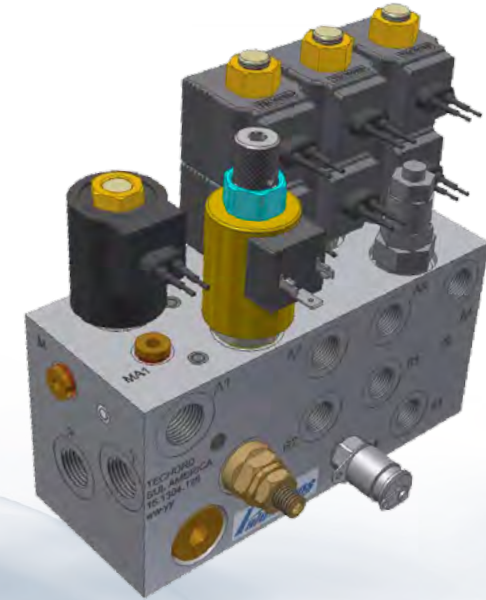
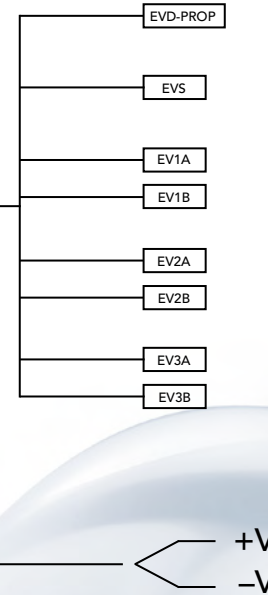
## VALV-O-MATIC MULTI-FUNCTION CONTROL VALVE

COMBINED ON-OFF (FUNCTION SELECTION & DIRECTIONAL CONTROL) WITH PROPORTIONAL 2 WAY/METER-OUT CONTROL OF A SINGLE EFFECT MAST CYLINDER

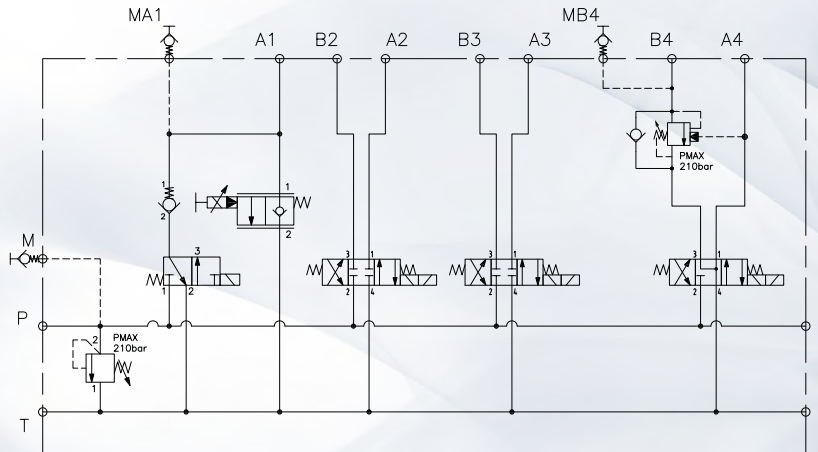
MOD. JLP-FTC  
Fingertip control levers

MOD. MMS-1521  
MMS (Machine Management System)

MOD. VOM-4F-32-FRS2G  
Electro-hydraulic control manifold



HYDRAULIC DIAGRAM

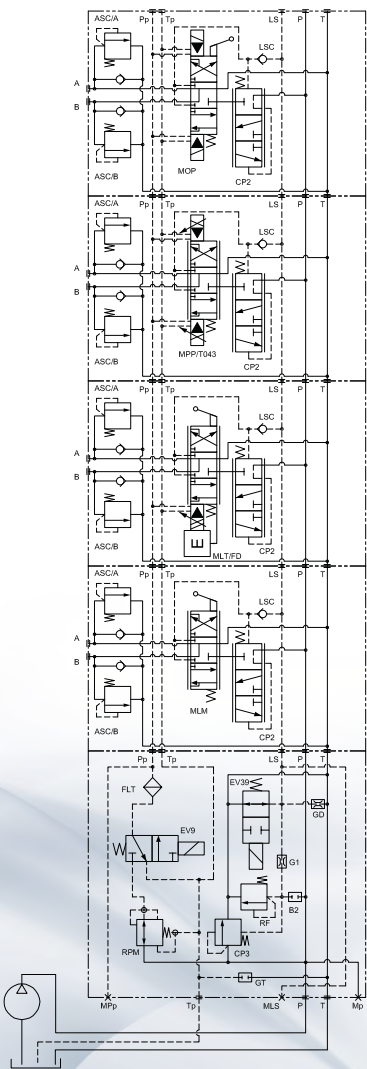


ELECTRIC FORK LIFT TRUCK



## TDV100 TECNORD DIRECTIONAL VALVE WITH MPP OPEN LOOP POSITION ACTUATOR SYSTEM

TDV100-MPP-4F-DIRECTIONAL CONTROL SECTION WITH OPEN LOOP BY MEANS OF PROPORTIONAL PRESSURE REDUCING VALVE.  
THE TDV100 IS OPERATED BY DUAL AXIS JOYSTICKS WITH TWO PROPORTIONAL ROLLERS, MULTI-CHANNELL PWM DRIVER AND HARNESS

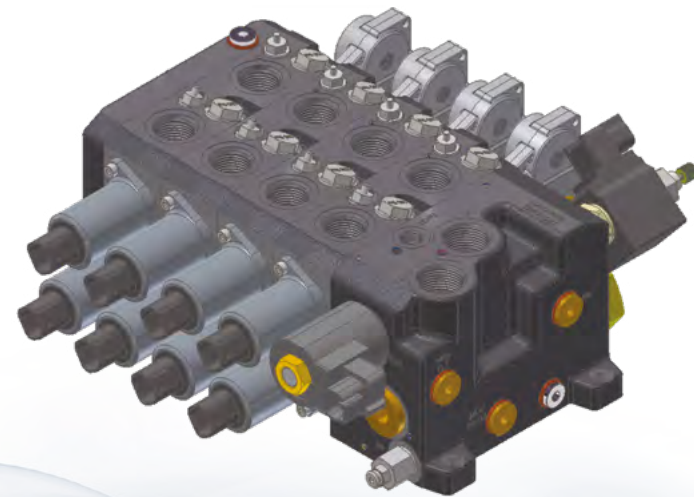
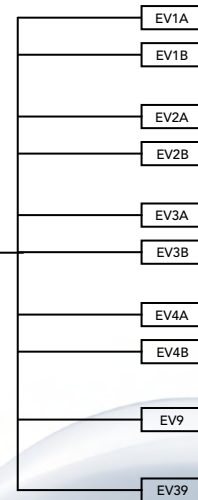


## HYDRAULIC DIAGRAM

**MOD. EC-PWM-08-MPC4**  
MMS (Machine Management System)



**MOD. JHM-L4D/MS-2FPR**  
Dual-axes Joystick controller  
with 2 ea FPR



**MOD. TDV100-00PP**  
Directional control section with open-loop by means of proportional pressure reducing valve (IP-DAR 43)

## ROUGH TERRAIN FORK LIFT



## TDV30 TECNORD DIRECTIONAL VALVE WITH DIRECT ACTING PROPORTIONAL CONTROL SOLENOIDS

MEDIUM-FLOW/MULTI-FUNCTION DIRECTIONAL-PROPORTIONAL CONTROL SYSTEM WITH LOAD SENSE FOR ELECTRIC FORK LIFT TRUCKS

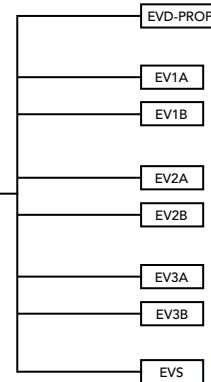
### MOD. JLP-FTC

Fingertip control levers

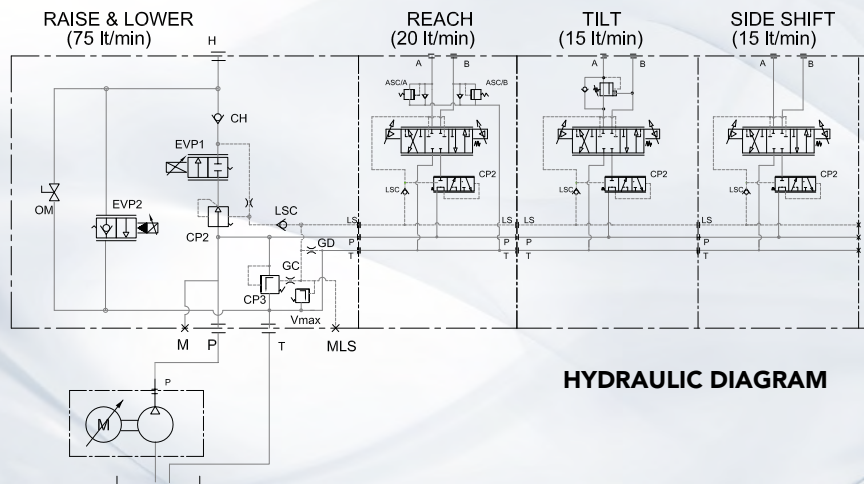


### MOD. MMS-1521

MMS (Machine Management System)



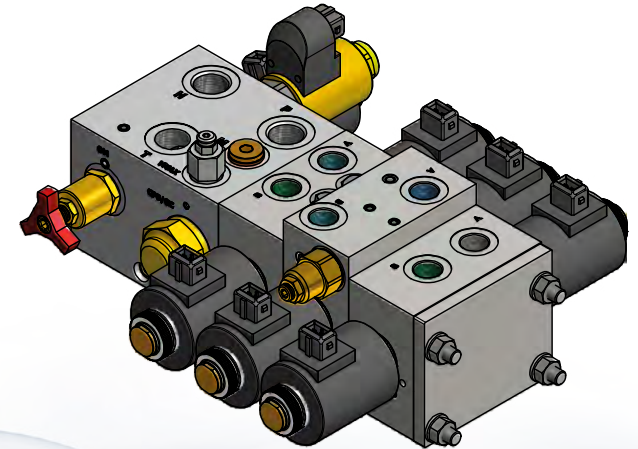
+V  
-V



HYDRAULIC DIAGRAM

### MOD. TDV30-3F

Special MEDIUM FLOW inlet section for single effect LIFT & LOWER control



ELECTRIC SIDE-SHIFT  
FORK LIFT TRUCK

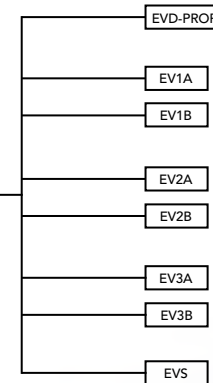


## TDV30 TECNORD DIRECTIONAL VALVE WITH DIRECT ACTING PROPORTIONAL CONTROL SOLENOIDS

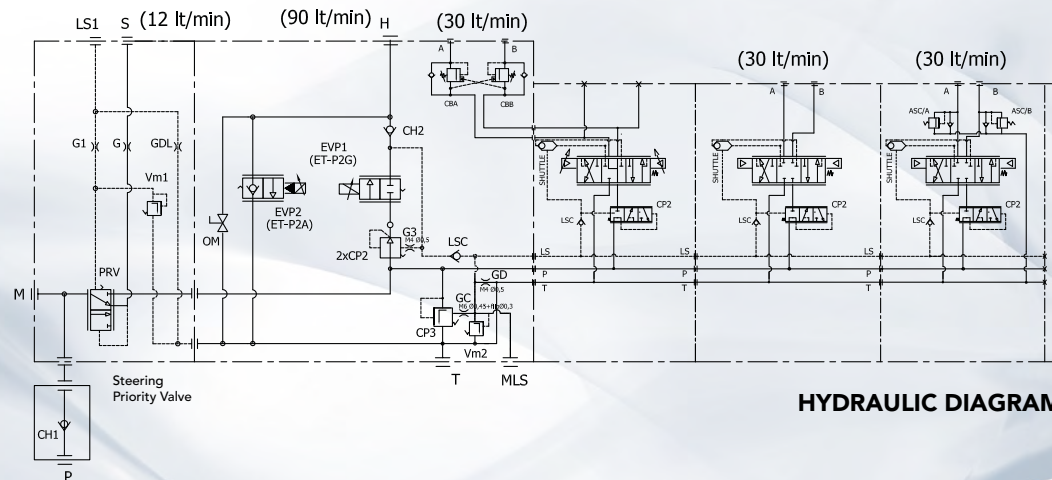
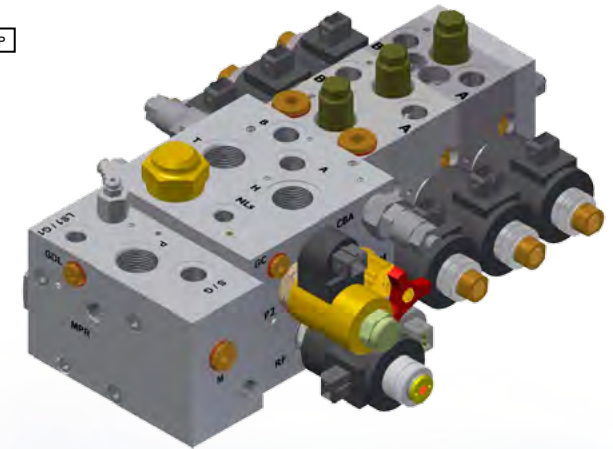
MEDIUM-FLOW/MULTI-FUNCTION DIRECTIONAL-PROPORTIONAL CONTROL SYSTEM WITH LOAD SENSE FOR ELECTRIC FORK LIFT TRUCKS



MOD. MMS-1521  
MMS (Machine Management System)



MOD. TDV30-3F  
Special HIGH FLOW inlet section for single effect LIFT & LOWER control



+V  
-V

DIESEL FORK-LIFT TRUCK



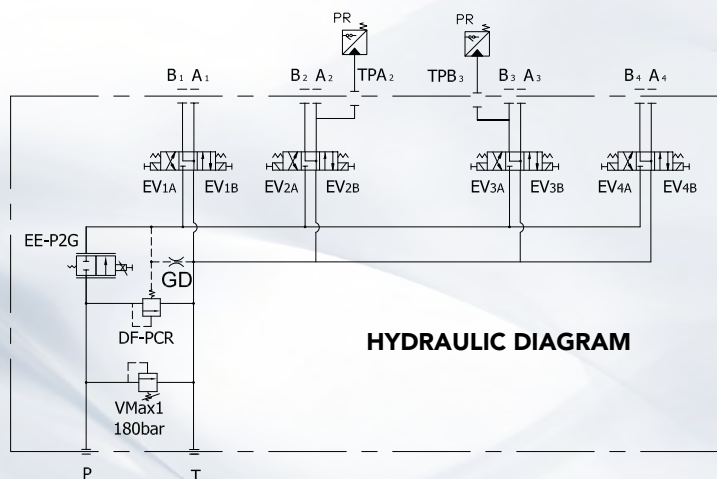
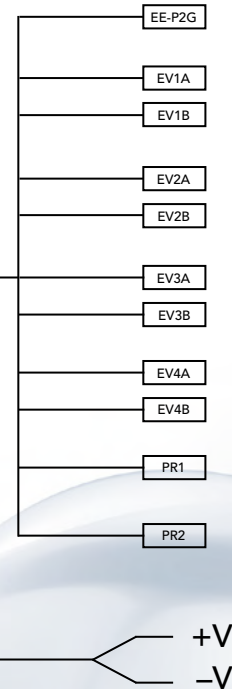
## VALV-O-MATIC MULTI-FUNCTION CONTROL VALVE

ELECTRO-HYDRAULIC MANIFOLD WITH 4 ON-OFF BIDIRECTIONAL SELECTOR VALVES

MOD. JLP (or FTC)  
Fingertip control levers

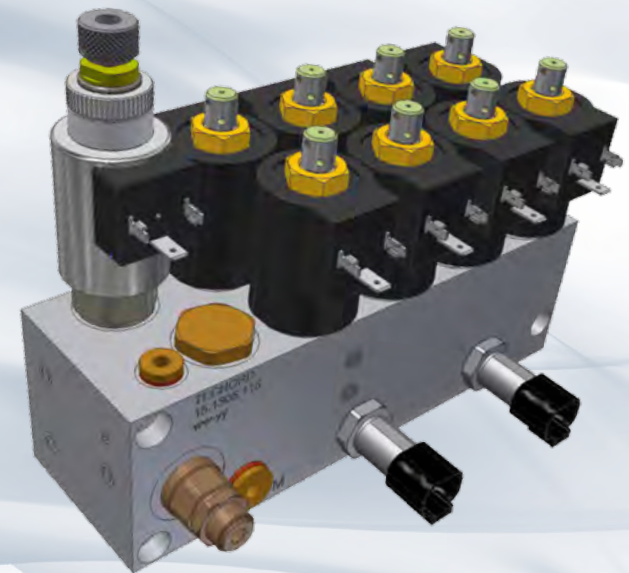


MOD. MMS-1521  
MMS (Machine Management System)

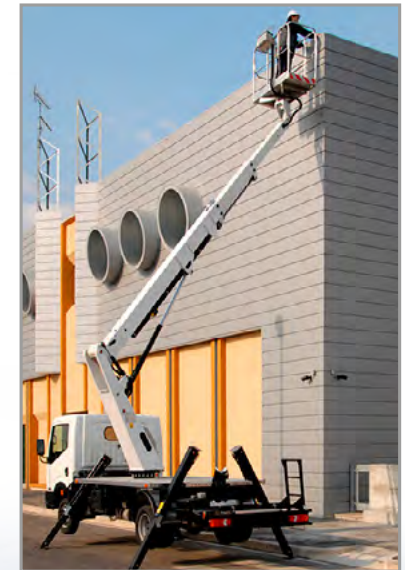


MOD. VOM-4F-32-FRS2G

Meter-in controlled valve block, combining  
directional and proportional 4 sections  
electro-hydraulic functions



TRUCK-MOUNTED AERIAL PLATFORM



## VALV-O-MATIC MULTI-FUNCTION CONTROL VALVE

ELECTRO-HYDRAULIC/MULTI-FUNCTION ON-OFF CONTROL FOR SCISSOR LIFT APPLICATION

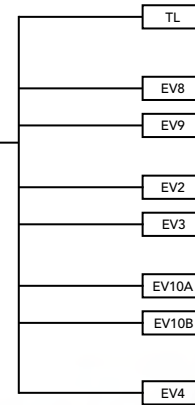


**MOD. JMF-L2S**

Single axis joystick with rocker switch for steering and variable output signal for electric traction motor

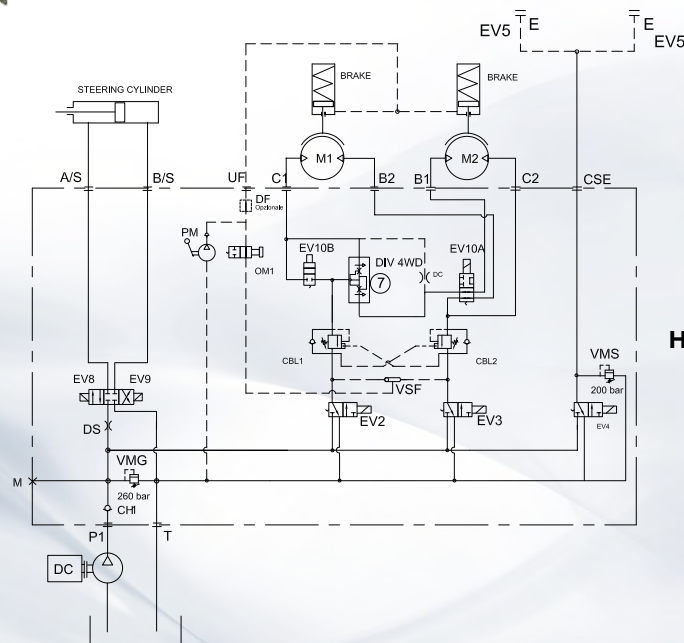
**MOD. EC-PWM-08-MPC4**

MMS (Machine Management System)



+V -V

**MOD. VOM-3F-TRACT**



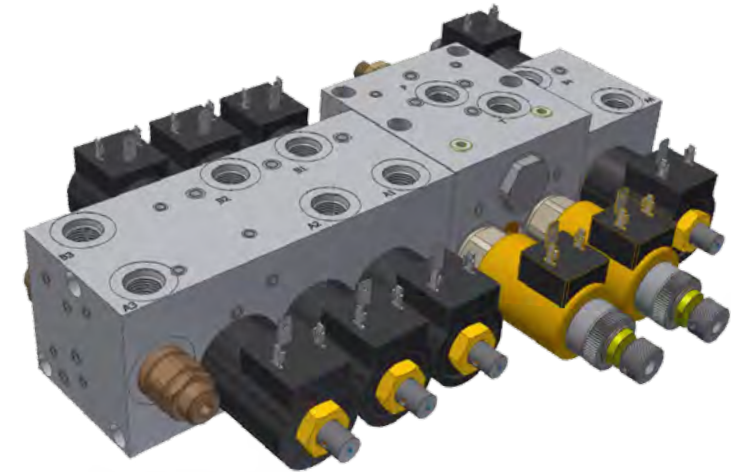
**HYDRAULIC DIAGRAM**

**SCISSOR LIFT**



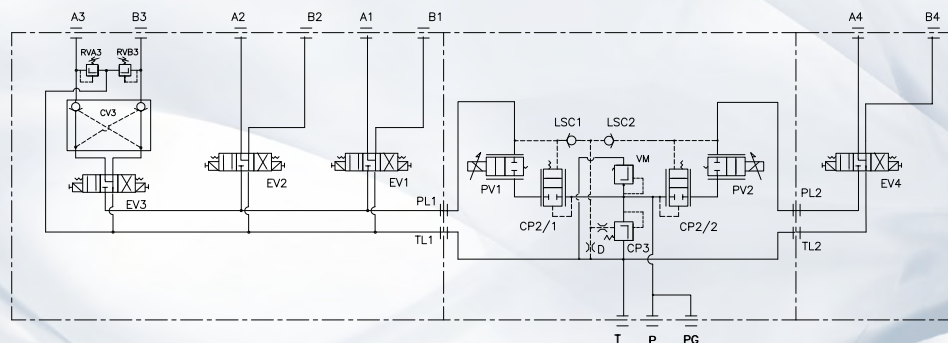
## VALV-O-MATIC MULTI-FUNCTION CONTROL VALVE

ELECTRO-HYDRAULIC 4-FUNCTIONS SYSTEM WITH DUAL PATTERN/METER-IN PROPORTIONAL CONTROL AND ON-OFF SELECTION OF BIDIRECTIONAL FUNCTIONS



**MOD. VOM 4F DUAL PROPORTIONAL**  
4-functions manifold block with solenoid-operated ON-OFF cartridge valves and DUAL PATTERN pressure compensated, 3 way proportional control valves system

HYDRAULIC DIAGRAM



SELF PROPELLED AERIAL PLATFORM



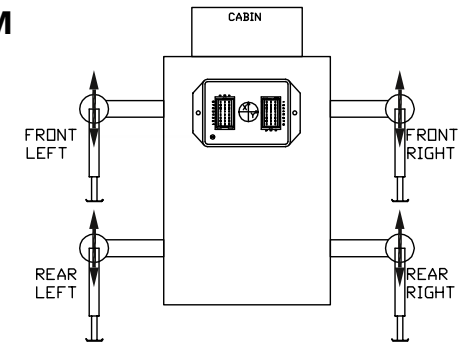
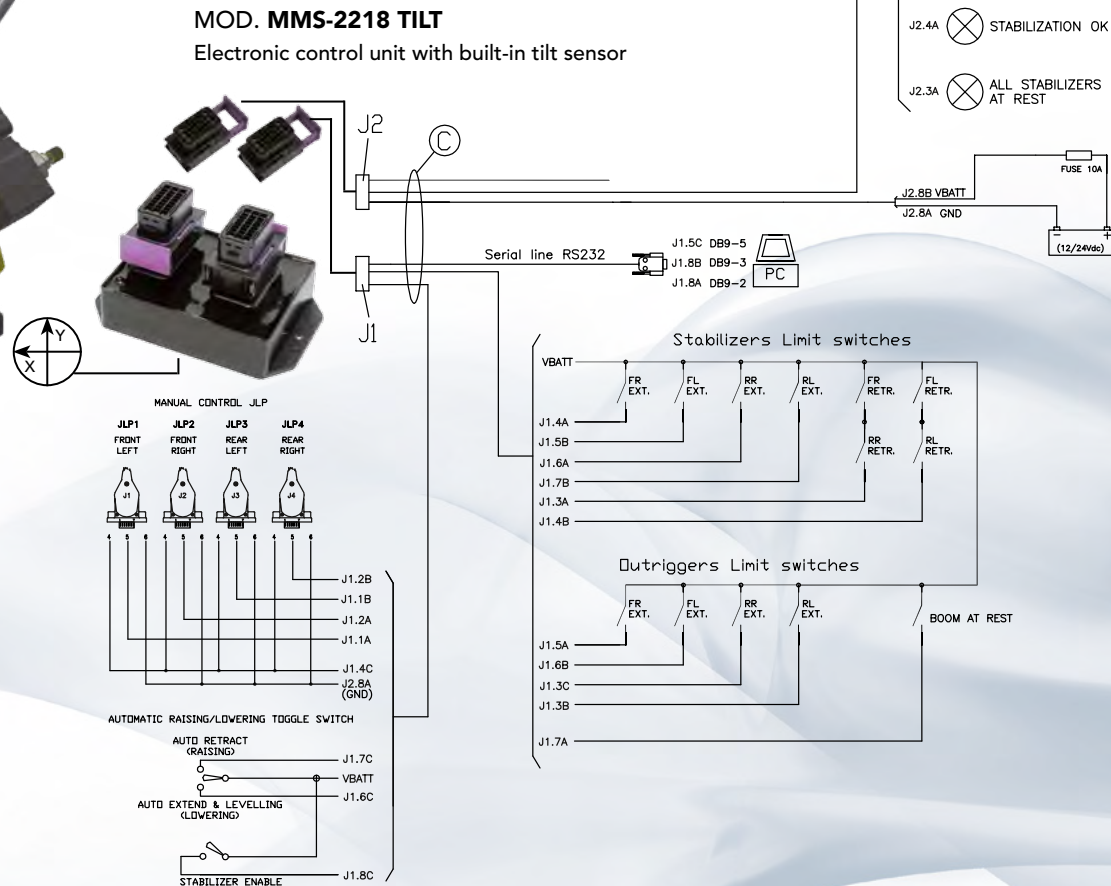
## TDV100 TECNORD DIRECTIONAL VALVE WITH MLT/FD5 CLOSED LOOP POSITION ACTUATOR SYSTEM

ELECTRO-HYDRAULIC PROPORTIONAL SELF-LEVELING SYSTEM WITH MULTIPLE OUTPUTS  
FOR COMBINED OUTRIGGERS AND STABILIZERS CONTROL OF TRUCK-MOUNTED AERIAL PLATFORMS



### MOD. TDV100-M0FDA

Proportional directional systems  
with electro-hydraulic proportional  
actuator and built-in electronics



TRUCK-MOUNTED PLATFORM



## VALV-O-MATIC MULTI-FUNCTION CONTROL VALVE

COMBINED ON-OFF (FUNCTION SELECTION & DIRECTIONAL CONTROL)  
WITH PROPORTIONAL 3 WAY/METER-IN CONTROL OF PUMP FLOW

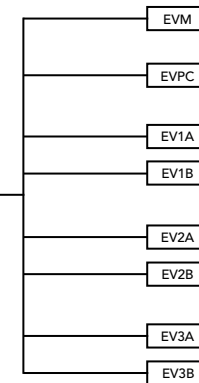
### MOD. JHM-L4C-MG-A4P9

Multi-function, dual axes joystick with 4 push buttons for function selection



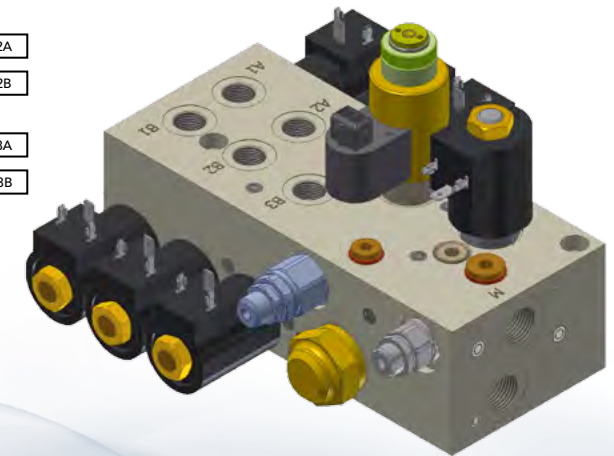
### MOD. EC-PWM-1012-H

MMS (Machine Management System)

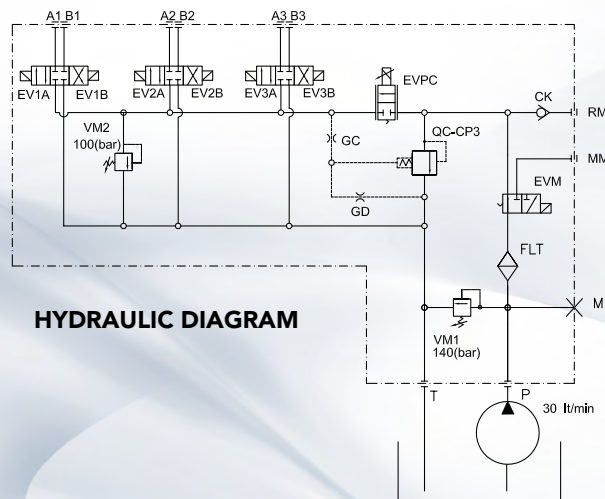


### MOD. VOM-3F-32-1M

3 bidirectional functions with 3 way proportional pressure compensated meter-in control of pump flow and a 3 way-2pos flow diverter to feed a hydraulic motor in series connection with the other functions



+V  
-V



HYDRAULIC DIAGRAM

FRONT AND REAR IMPLEMENTS FOR  
VINEYARD TRACTORS

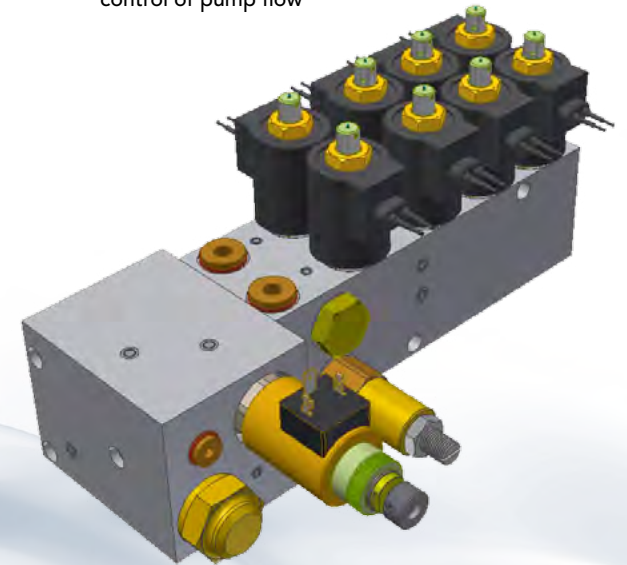
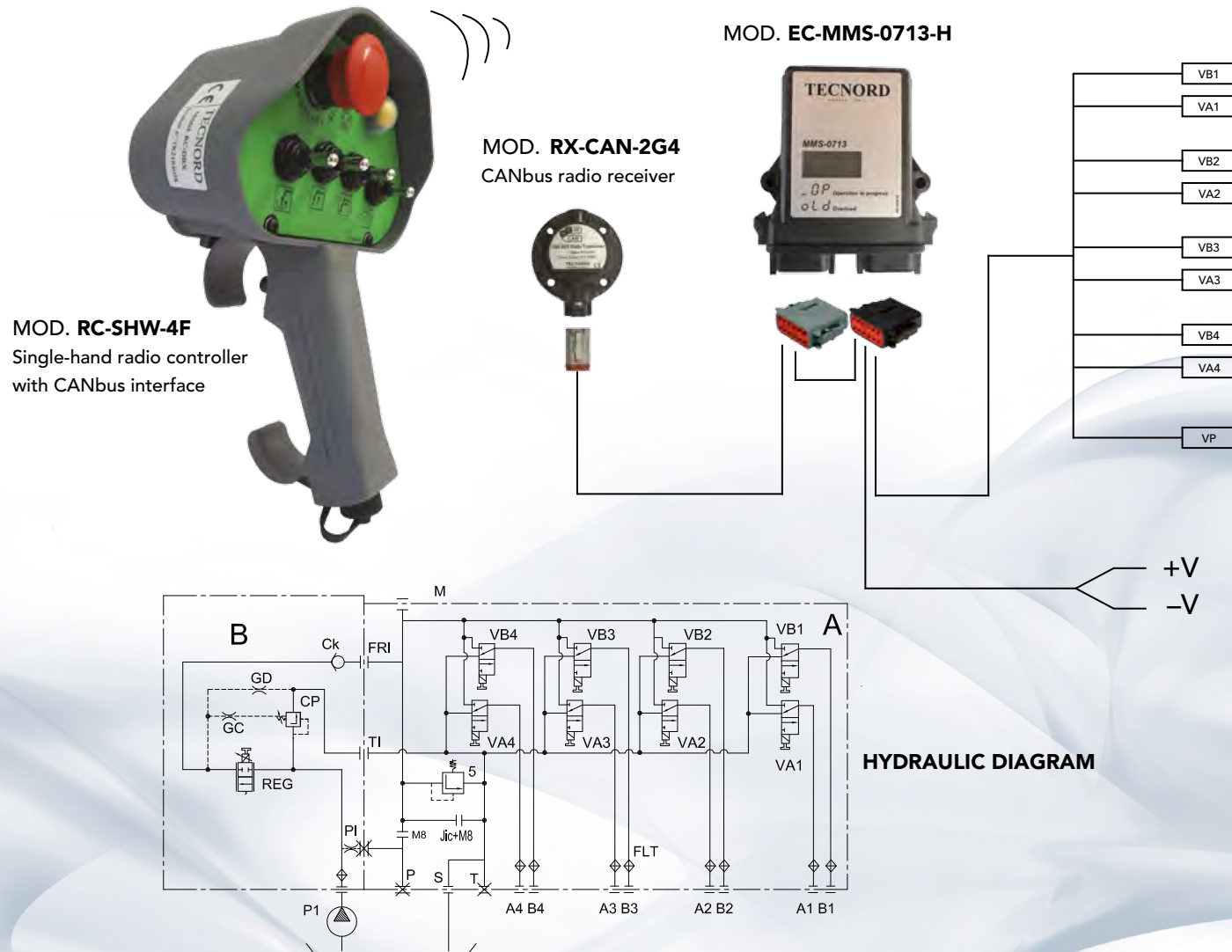


AG TRIMMERS & STRIPPERS



## VALV-O-MATIC MULTI-FUNCTION CONTROL VALVE

COMBINED ON-OFF (FUNCTION SELECTION & DIRECTIONAL CONTROL) WITH PROPORTIONAL 3 WAY/METER-IN CONTROL OF PUMP FLOW AND 4 ON/OFF FUNCTIONS METER-IN SHW TRANSMITTER



SERVICE CRANE



## RETROFITTING CONTROL SYSTEMS

MLT/CE16 ELECTRO-HYDRAULIC REMOTE CONTROL SYSTEM FOR TRUCK MOUNTED/KNUCKLE BOOM CRANES. THE SYSTEM IS EQUIPPED WITH LMI (RATED CAPACITY INDICATOR) FOR OVERTURNING MOMENT CONTROL



### LMI SERIES

Electronic load limiter device



### MOD. PTM-4F-CAN-2G4

Multifunction proportional radio control system  
2.4 GigaHertz transceiver radio

MOD. RX-CAN-2G4  
CANbus radio receiver



EMERGENCY  
BYPASS

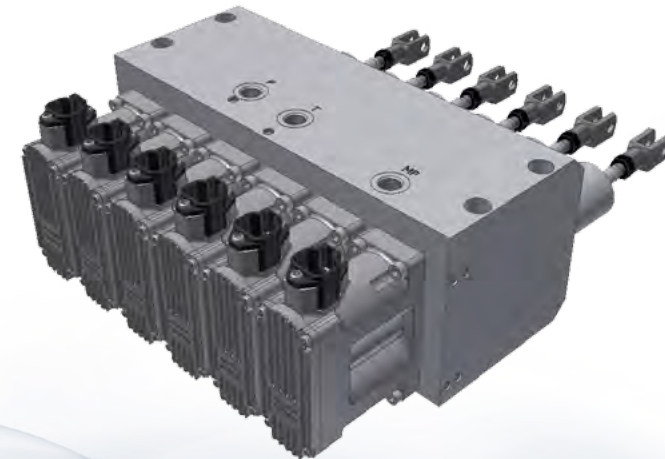


CRANES

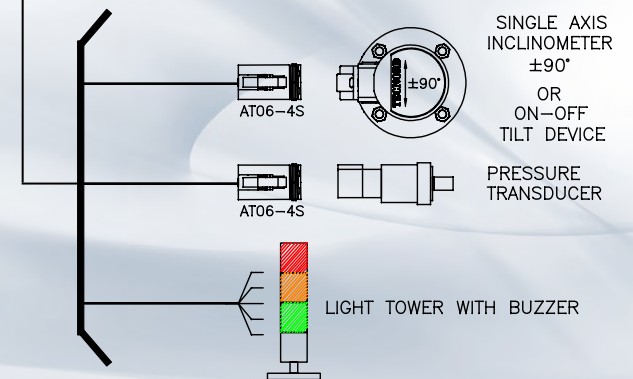


### MOD. MLT/CE16

Hydraulically operated push-pull type servo-piston rods for mechanical linkage to the spools of the original manual control system



### BOOM EQUIPMENT



## TDV100 TECNORD DIRECTIONAL VALVE WITH MLT/FD5 CLOSED LOOP POSITION ACTUATOR SYSTEM

TDV100-MLT-4F DIRECTIONAL/PROPORTIONAL STACKABLE CONTROL VALVE WITH LOAD SENSE AND MLT/FD5-CLOSED LOOP/PILOT OPERATED REMOTE CONTROL SYSTEM

### MOD. JLP-FTC

Fingertip control levers

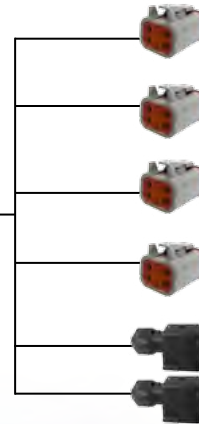


### MOD. MMS-1521

MMS (Machine Management System) for individual function tune-up



+V  
-V



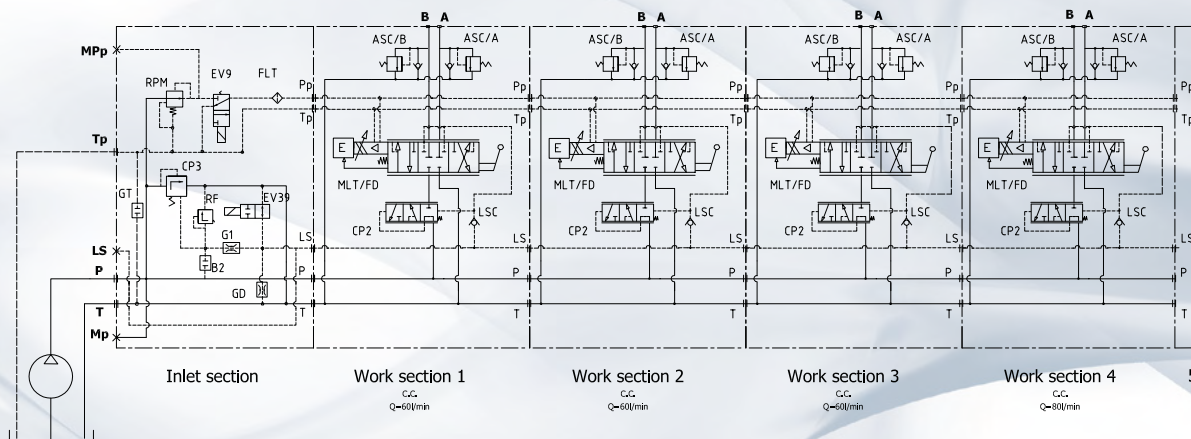
### MOD. TDV100-M0FDA

Electro-hydraulic proportional actuators with built-in electronics allow direct connection with in-cabin remote control joysticks

### STIFF-BOOM CRANES



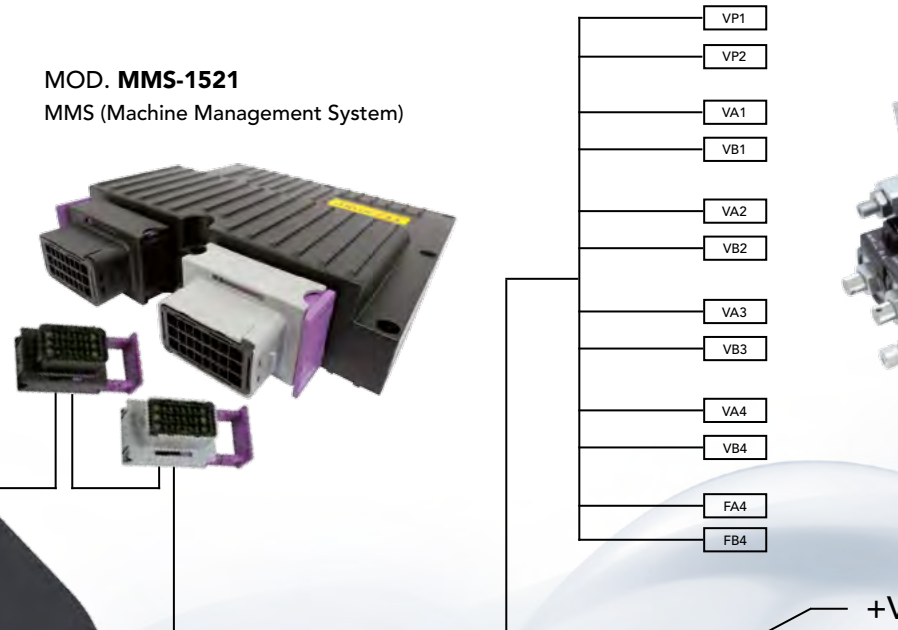
### HYDRAULIC DIAGRAM



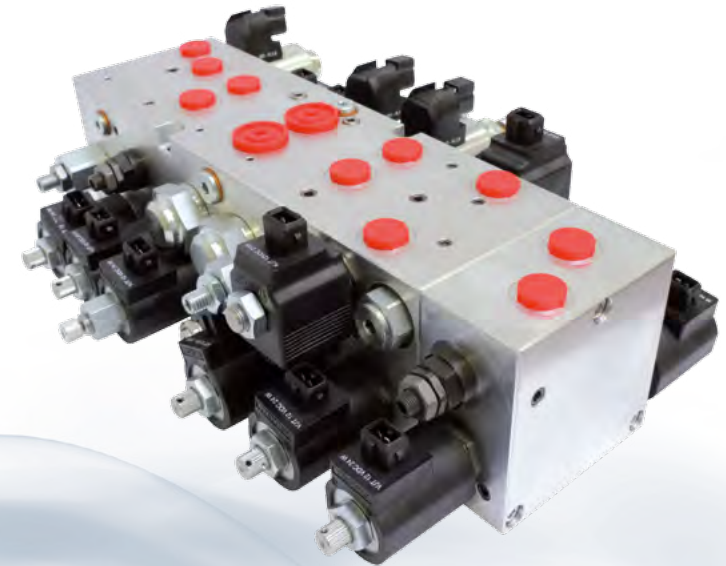
## VALV-O-MATIC MULTI-FUNCTION CONTROL VALVE

ELECTRO-HYDRAULIC 4-FUNCTIONS SYSTEM WITH DUAL PATTERN/METER-IN PROPORTIONAL CONTROL AND ON-OFF SELECTION OF BIDIRECTIONAL FUNCTIONS

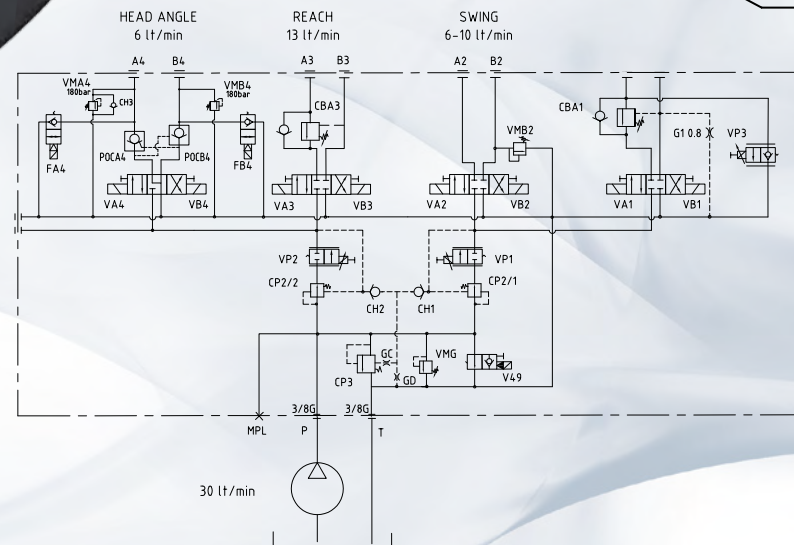
MOD. MMS-1521  
MMS (Machine Management System)



MOD. VOM-AF-DUAL-PROP.  
4-functions manifold block with solenoid-operated ON-OFF cartridge valves and DUAL PATTERN pressure compensated, 3 way proportional control valve system



HYDRAULIC DIAGRAM



EDGE CUTTERS



## VALV-O-MATIC MULTI-FUNCTION CONTROL VALVE

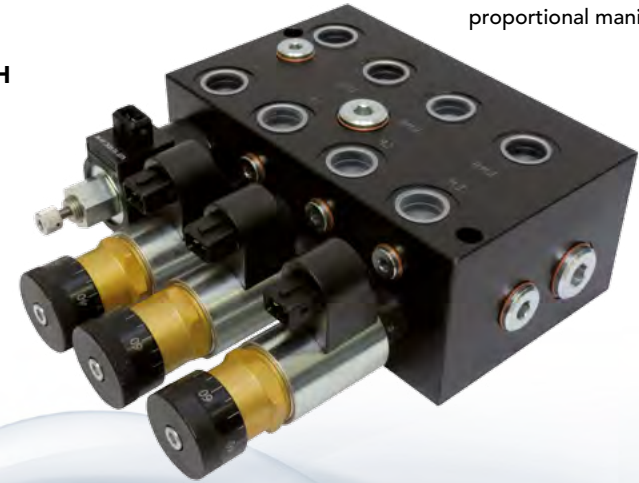
## ECOMATIC SYSTEM-GROUND-SPEED ORIENTED/CLOSED LOOP CONTROL SYSTEM FOR DE-ICING SALT & CHEMICALS SPREADERS



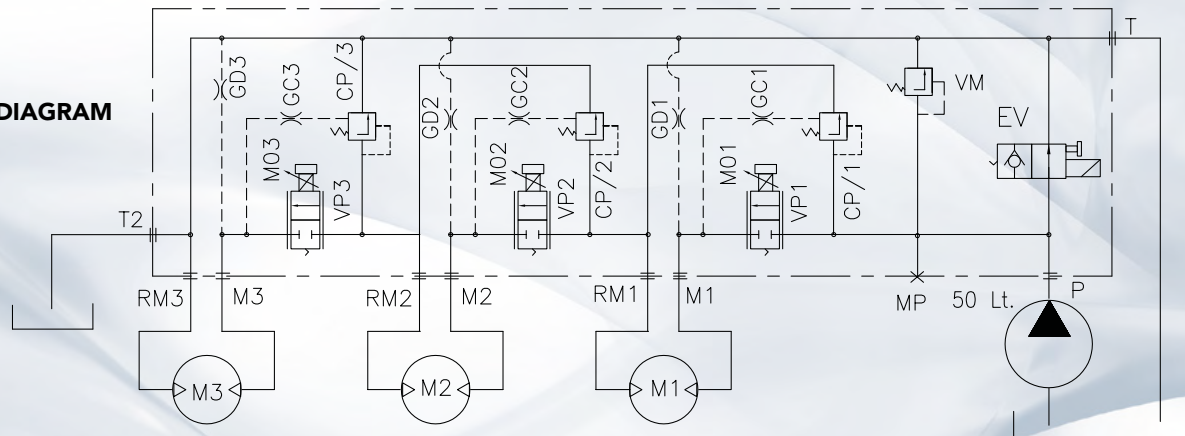
**MOD. ECOMATIC SYSTEM**  
Ground-speed oriented spreading  
control system



MOD. **EC-SNR-EOM-H**  
End-off material sensor



**MOD. VOM 3F SERIES**  
3-fuctions pressure compensated  
proportional manifold

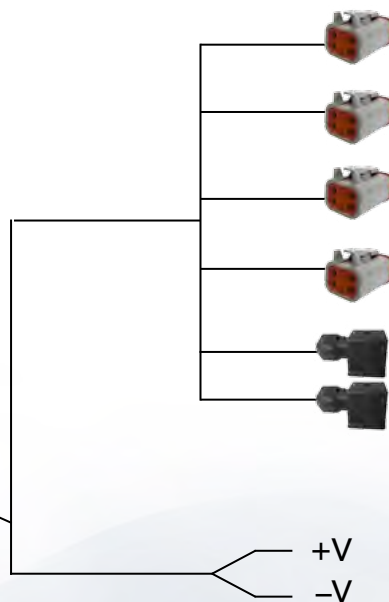


## SALT SPREADER

## TDV100 TECNORD DIRECTIONAL VALVE WITH MLT/FD5 CLOSED LOOP POSITION ACTUATOR SYSTEM

TDV100-MLT-4F DIRECTIONAL/PROPORTIONAL STACKABLE CONTROL VALVE WITH LOAD SENSE  
AND MLT/FD5-CLOSED LOOP/PILOT OPERATED REMOTE CONTROL SYSTEM

MOD. JHM



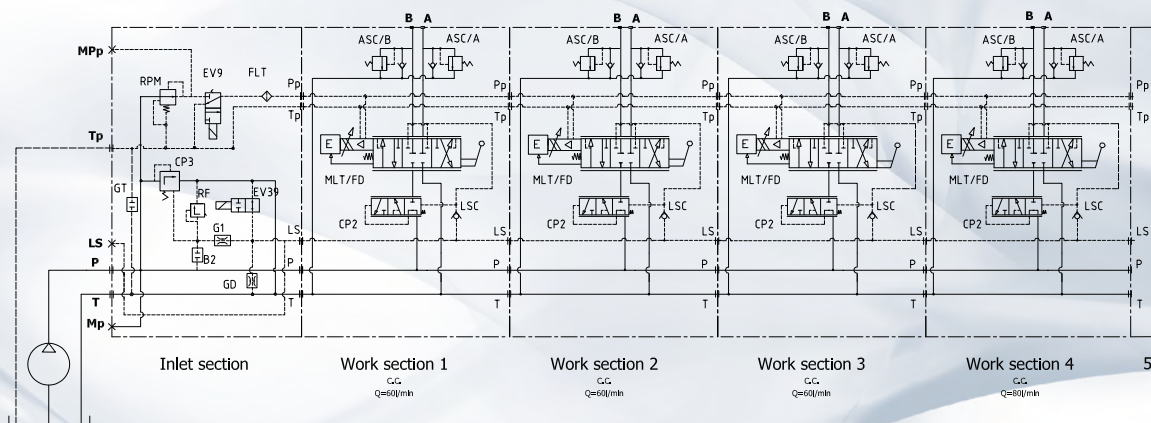
MOD. TDV100-MLFDC

Proportional directional systems  
with electro-hydraulic proportional  
actuator and built-in electronics

MEDIUM-SIZE TELEHANDLERS



HYDRAULIC DIAGRAM



## CROSS-BRAND CONTROL VALVE WITH MLT/FD5 CLOSED LOOP PROPORTIONAL ACTUATOR SYSTEM

## HDS30/LARGE FLOW-DIRECTIONAL/PROPORTIONAL STACKABLE CONTROL VALVE WITH LOAD SENSE AND MLT/FD5-CLOSED LOOP/PILOT OPERATED REMOTE CONTROL SYSTEM

**MOD. JHM-L4D/MS-2FPR**

Dual-axes joystick controller  
with 2 ea FPR

MOD. EC-VIS-GC

Graphic display unit

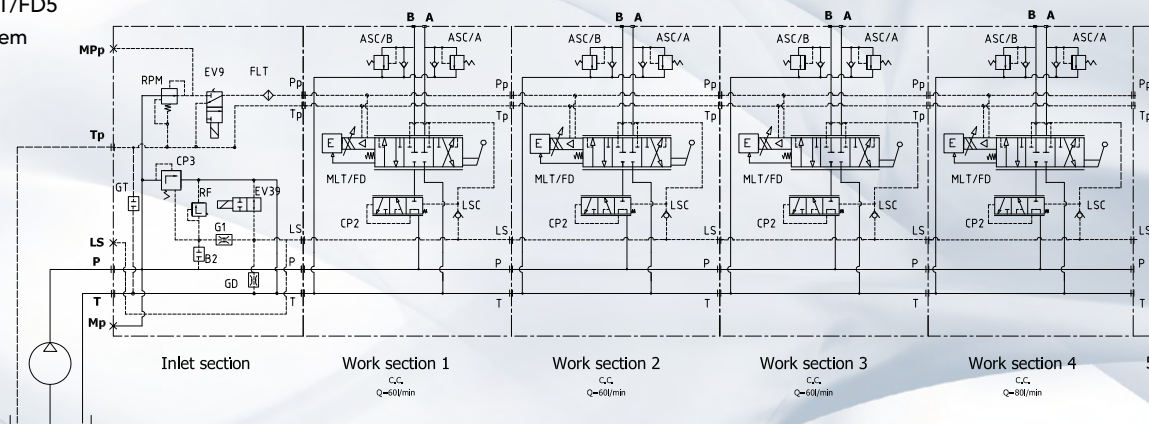
MOD. MMS-1521

MMS (Machine Management System)  
for individual function tune-up

**MOD. HDS30/5F-MLT-FD5**

Large-flow / 5-functions directional/proportional control valve with load-sense and MLT/FD5 closed loop proportional control system

## HYDRAULIC DIAGRAM



## TELEHANDLERS

### TDV100 TECNORD DIRECTIONAL VALVE WITH MPP OPEN LOOP POSITION ACTUATOR SYSTEM

TDV100-MPP-4F-DIRECTIONAL/PROPORTIONAL STACKABLE CONTROL VALVE WITH LOAD SENSE MULTI-FUNCTION RADIO CONTROL SYSTEM 2.4 GHZ WITH CAN



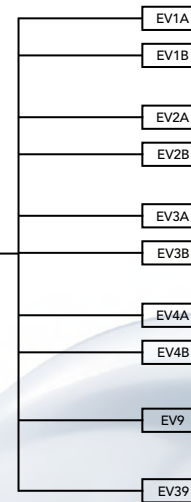
**MOD. PTM-4F-CAN-2G4**

Multifunction proportional radio control system - 2.4 GigaHertz transceiver radio

**MOD. RX-CAN-2G4**  
CANbus radio receiver

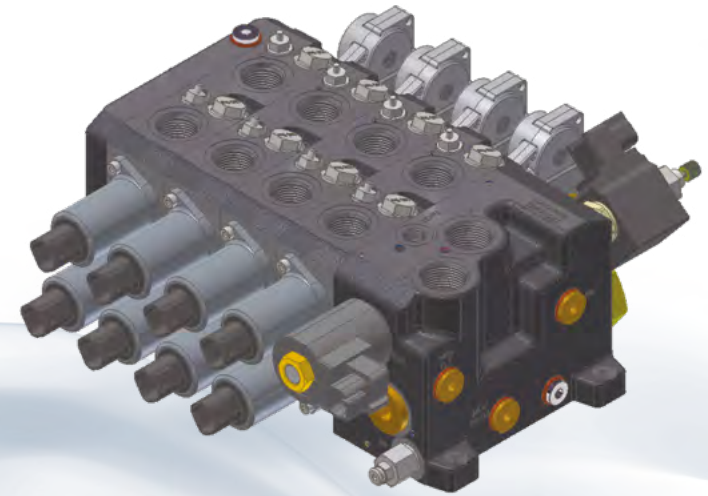


**MOD. EC-PWM-08-MPC4**  
MMS (Machine Management System)



**MOD. TDV100-00PP**

Directional control section with open-loop control



UN-MANNED CRAWLER VEHICLE  
FOR HAZARDOUS ENVIRONMENT OPERATION







**TECNORD**

Via Malavolti, 36 - 41122 Modena, Italy - Tel. +39 (059) 254895 - Fax +39 (059) 253512  
mail: [tecnord@tecnord.com](mailto:tecnord@tecnord.com)



[WWW.TECNORD.COM](http://WWW.TECNORD.COM)