

MIZERS

Pre-Engineered Circuit, Option MODEL A2

Load Holding Solenoid Operated, RV w/Adj. Press. Comp. Flow Control, RV w/Fixed Press. Comp. Flow Control, Unloading w/flow control, Lift Circuit w/RV, RV w/Flow Control, Unloading w/ Fixed Press. Comp. Flow Control Speed Control

PRE-ENGINEERED CIRCUIT, OPTION MODEL B4

Lift, Check, & Dump. Startup Circuit, Lift, Check & Dump w/RV

PRE-ENGINEERED CIRCUIT, OPTION MODEL C6

Dual RV, Dump, Flow Divider, Motor Speed Control, Selector, Hydrostatic (Anti-Cav)

PRE-ENGINEERED CIRCUIT, OPTION MODEL D8

NC Poppet Valve, Single RV, Needle Flow Control, Flow Control w/Free Flow Check, NO Spool valve, Crossover RV

PRE-ENGINEERED CIRCUIT, OPTION MODEL E10

Adj. Flow Control NC Poppet Dual Speed Circuit, Adj. Press. Comp. Flow Control NC Poppet Dual Speed Circuit, Press. Comp. Flow Control & Check Valve, Adj. Press. Comp. Flow Control NO Poppet Dual Speed Circuit, Adj. Flow Control NO Poppet Dual Speed Circuit, Press. Comp Flow Control and Check, Adj. Flow Control NC Spool Valve Dual Speed Circuit

PRE-ENGINEERED CIRCUIT, OPTION MODEL F12

Dual Sequence Valve Manifold

PRE-ENGINEERED CIRCUIT, OPTION MODEL G14

Rectifier Circuit

PRE-ENGINEERED CIRCUIT, OPTION MODEL H16

4w3p Open Center, 4w3p Closed Center

PRE-ENGINEERED CIRCUIT, OPTION MODEL I18

3way valve, Manual Lift Check & Dump, NC Poppet Valve and RV, Lift Check & Dump, Pump Check & RV, Needle Flow Control & Check, NO Poppet & Check, NO Poppet & RV

PRE-ENGINEERED CIRCUIT, OPTION MODEL J20

4w3p Tandem Center

PRE-ENGINEERED CIRCUIT, OPTION MODEL L22

Dual Counterbalance Circuit

PRE-ENGINEERED CIRCUIT, OPTION MODEL M24

Single 4:1 PO Check Circuit

PRE-ENGINEERED CIRCUIT, OPTION MODEL O26

Single Counterbalance Circuit

PRE-ENGINEERED CIRCUIT, OPTION MODEL P28

Lift Circuit w/Needle Valve & RV, Lift Circuit w/Press. Comp Flow Control & RV, Lift Circuit w/Bypass & Needle Valve, Lift Circuit w/Bypass & Press. Comp Flow Control

PRE-ENGINEERED CIRCUIT, OPTION MODEL Q30

Dual 3 way Valves

PRE-ENGINEERED CIRCUIT, OPTION MODEL R32

Single RV Circuit

PRE-ENGINEERED CIRCUIT, OPTION MODEL S34

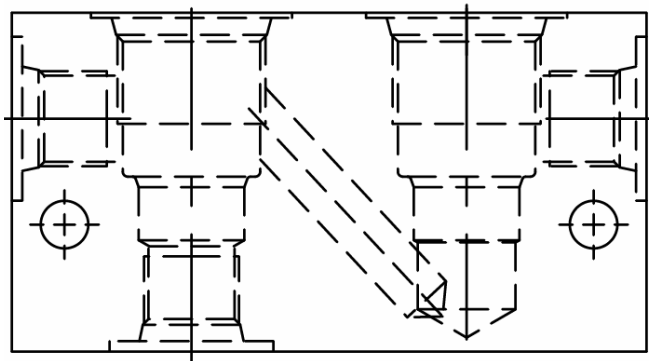
Crossover Relief, Mower Breakaway, Unloading & RV



WARNING: the specifications/application data shown in our catalogs and data sheets are intended only as a general guide for the product described (herein). Any specific application should not be undertaken without independent study, evaluation, and testing for suitability.

PRE-ENGINEERED CIRCUIT, OPTION **MODEL A***

BASE BODY - 20200001 = #6 SAE



BODY WEIGHT: .83 lbs (.37 kg)

DESCRIPTION

Pre-engineered circuit, option model A*.

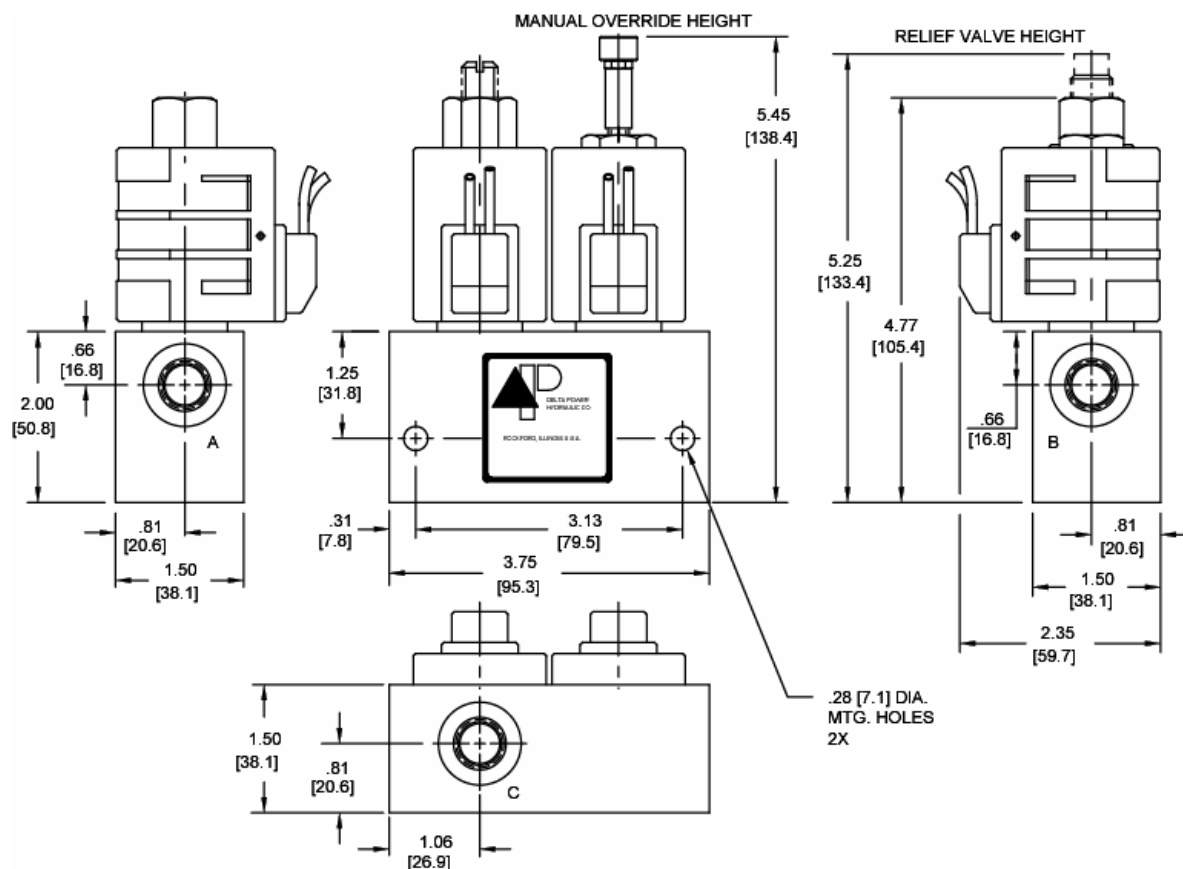
OPERATION

See options chart for specific operation.

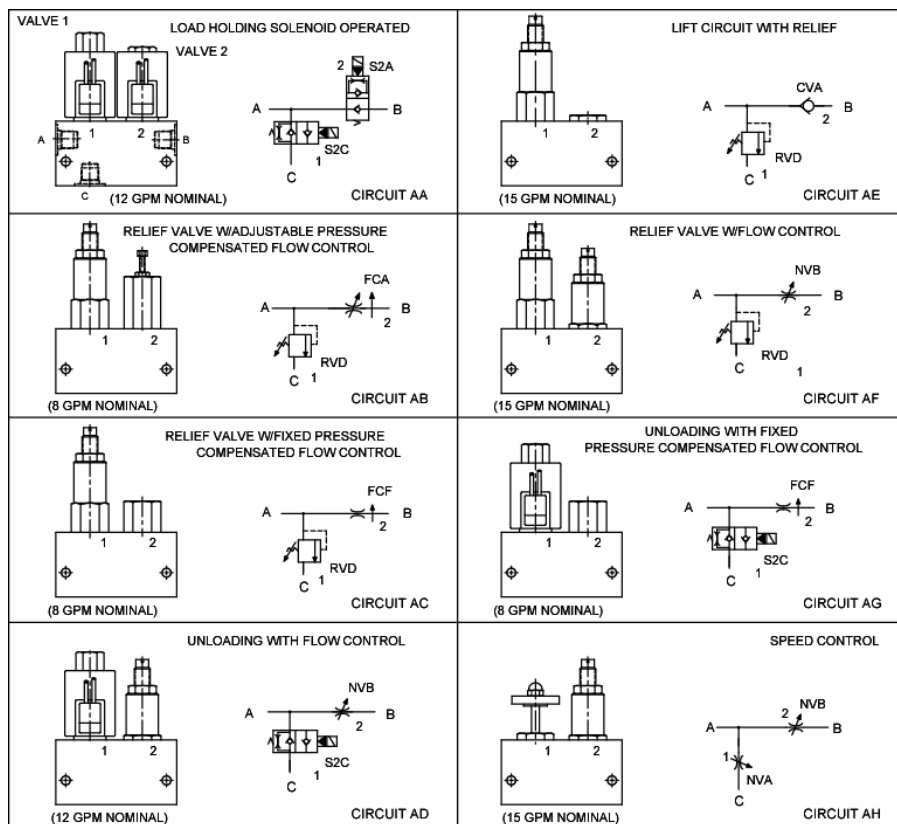
VALVE SPECIFICATIONS

Nominal Flow	See Options Chart for Flow Range
Rated Operating Pressure	See Options Chart for Pres. Range
Viscosity Range	36 to 3000 SSU (3 to 647 cSt)
Filtration	30 micron nominal
Media Operating Temp. Range	-40° to 250°F (-40° to 120°C)
Operating Fluid Media	General Purpose Hydraulic Fluid
Cartridge Size	Delta Series 7/8-14 Thread
Cartridge Torque Requirements	30 ft-lbs (40.6 Nm)
Coil Torque Nut Requirements	4-6 ft-lbs (5.4-8.1 Nm)

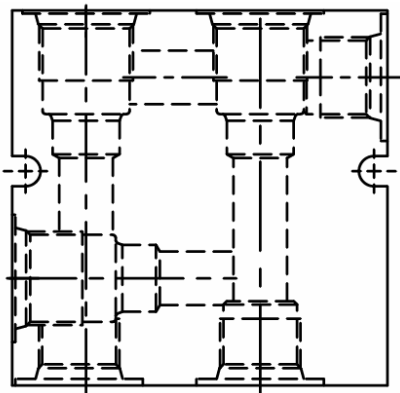
DIMENSIONS



WARNING: the specifications/application data shown in our catalogs and data sheets are intended only as a general guide for the product described (herein). Any specific application should not be undertaken without independent study, evaluation, and testing for suitability.

OPTIONS CHART

ORDERING INFORMATION
Approximate Coil Weight: .74 lbs (.33 kg)

<u>CIRCUITS</u>		<u>OPTIONS</u>		<u>VOLTAGE</u>		<u>VALVE 2</u>		<u>VALVE 1</u>	
AA	Buna Standard	00	06	6 VDC	01	.5-1 GPM	02	20-500 PSI	
AB	Viton Standard	V0	12	12 VDC	02	1-2 GPM	15	200-1500 PSI	
AC	Manual Override	0M	24	24 VDC	04	2-4 GPM	30	1500-3000 PSI	
AD			36	36 VDC	08	4-8 GPM	40	2500-4000 PSI	
AE			48	48 VDC	<u>FLOW CONTROL</u>		<u>RELIEF VALVE</u>		
AF			25	25 VAC					
AG			11	120 VAC					
AH			22	220 VAC					
			44	440 VAC					
<u>OIL TERMINATION</u>									
<i>(Except as Noted)</i>									
		HC	DIN 43650 (Hirschmann) - (AC&DC)						
		CL	Conduit Lead - (AC Only)						
		DI	Deutsch - Integral DT04-2P						
		<u>IMMERSION PROOF "D" TYPE</u>							
		IA	"I" Coil AMP Superseal - Integral						
		ID	"I" Coil Deutsch - Integral DT04-2P						
		IJ	"I" Coil AMP Jr. Timer - Integral						
		IM	"I" Coil Metri-Pack - Integral						

PRE-ENGINEERED CIRCUIT, OPTION MODEL B*
BASE BODY - 20200002 = #8 SAE

BODY WEIGHT: 1.2 lbs (.54 kg)
DESCRIPTION

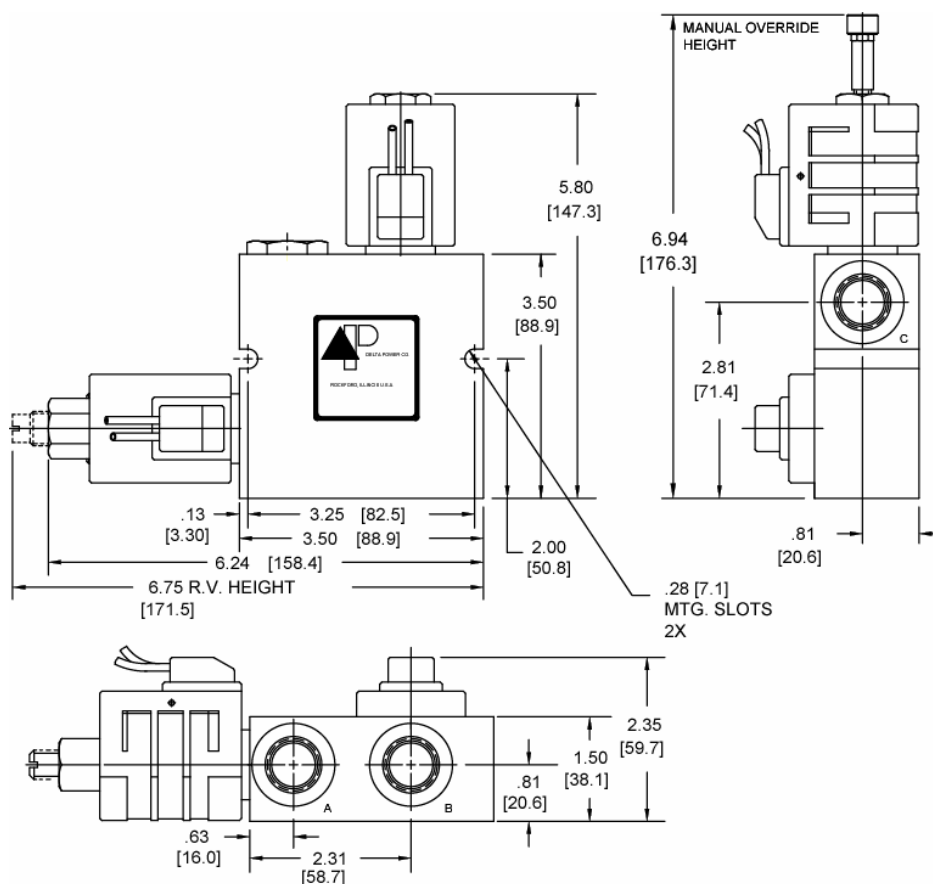
Pre-engineered circuit, option model B*.

OPERATION

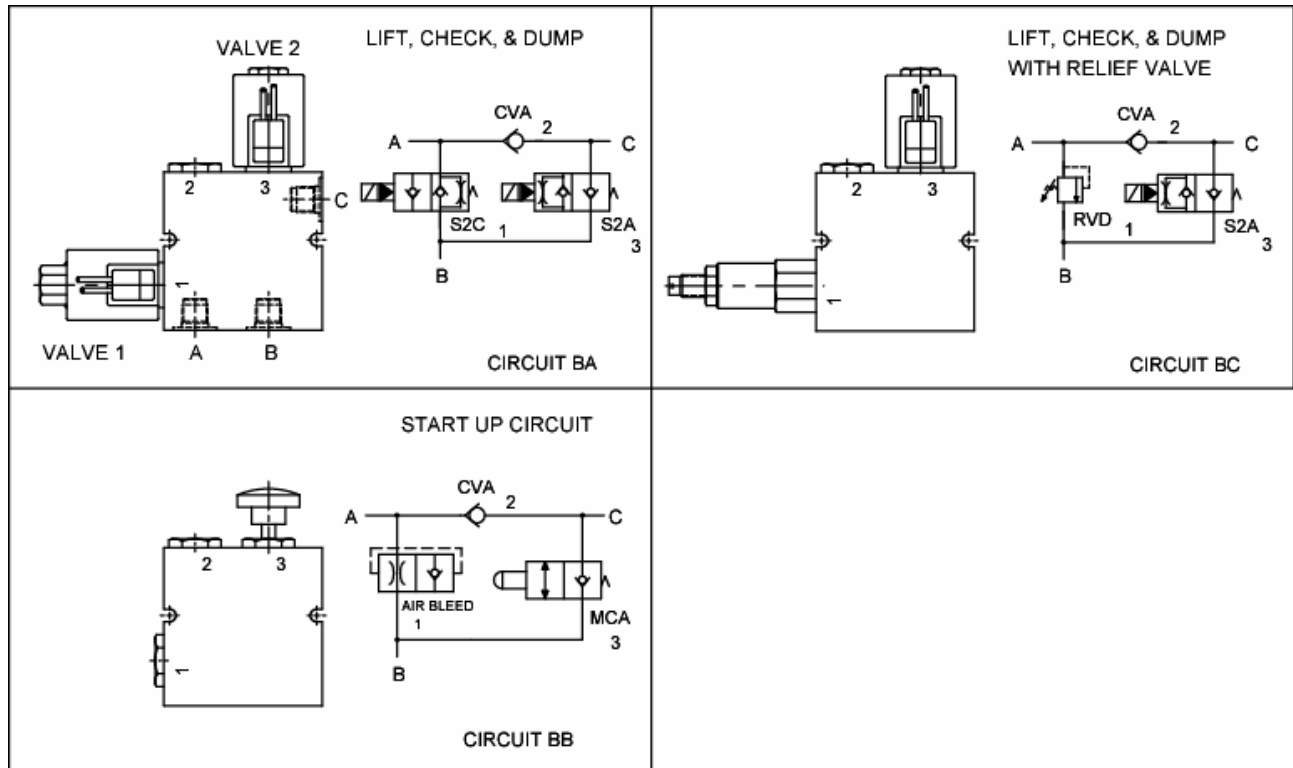
See options chart for specific operation.

VALVE SPECIFICATIONS

Nominal Flow	12 GPM (48 LPM)
Rated Operating Pressure	3500 PSI (241 bar)
Viscosity Range	36 to 3000 SSU (3 to 647 cSt)
Filtration	30 micron nominal
Media Operating Temp. Range	-40° to 250°F (-40° to 120°C)
Operating Fluid Media	General Purpose Hydraulic Fluid
Cartridge Size	Delta Series 7/8-14 Thread
Cartridge Torque Requirements	30 ft-lbs (40.6 Nm)
Coil Torque Nut Requirements	4-6 ft-lbs (5.4-8.1 Nm)

DIMENSIONS


WARNING: the specifications/application data shown in our catalogs and data sheets are intended only as a general guide for the product described (herein). Any specific application should not be undertaken without independent study, evaluation, and testing for suitability.

OPTIONS CHART

ORDERING INFORMATION

Approximate Coil Weight: .74 lbs (.33 kg)

<u>CIRCUITS</u>		<u>OPTIONS</u>		<u>VOLTAGE</u>		<u>VALVE 2</u>		
BA	Buna Standard	00	06	6 VDC	01	.5-1 GPM	02	20-500 PSI
BB	Viton Standard	V0	12	12 VDC	02	1-2 GPM	15	200-1500 PSI
BC	Manual Override	0M	24	24 VDC	04	2-4 GPM	30	1500-3000 PSI
			36	36 VDC	08	4-8 GPM	40	2500-4000 PSI
			48	48 VDC	<u>FLOW CONTROL</u>		<u>RELIEF VALVE</u>	
			25	25 VAC				
			11	120 VAC	<u>VALVE 1</u>			
			22	220 VAC	<u>FLOW</u>		<u>PRESSURE</u>	
			44	440 VAC	01	.5-1 GPM	02	20-500 PSI
					02	1-2 GPM	15	200-1500 PSI
					04	2-4 GPM	30	1500-3000 PSI
					08	4-8 GPM	40	2500-4000 PSI
					<u>FLOW CONTROL</u>		<u>RELIEF VALVE</u>	

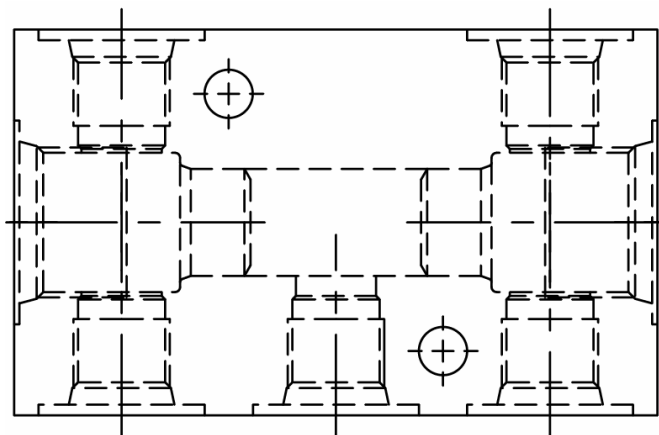
<u>OIL TERMINATION</u> (Except as Noted)		<u>IMMERSION PROOF "D" TYPE</u>	
DL	Double Lead	IA	"I" Coil AMP Superseal - Integral
DT	Deutsch on Leads DT04-2P	ID	"I" Coil Deutsch - Integral DT04-2P
ML	Metri-Pack on Leads	IJ	"I" Coil AMP Jr. Timer - Integral
PL	Packard on Leads	IM	"I" Coil Metri-Pack - Integral
WL	Weatherpack on Leads		
SS	Single Spade		
DS	Double Spade		

<u>VALVE 2</u>		<u>VALVE 1</u>	
01	.5-1 GPM	01	.5-1 GPM
02	1-2 GPM	02	1-2 GPM
04	2-4 GPM	04	2-4 GPM
08	4-8 GPM	08	4-8 GPM
<u>FLOW CONTROL</u>		<u>FLOW CONTROL</u>	
02	20-500 PSI	02	20-500 PSI
15	200-1500 PSI	15	200-1500 PSI
30	1500-3000 PSI	30	1500-3000 PSI
40	2500-4000 PSI	40	2500-4000 PSI
<u>RELIEF VALVE</u>		<u>RELIEF VALVE</u>	

FOR SPECIAL PRESET VALUES ON VALVES, CONSULT FACTORY

FOR SPECIAL PRESET VALUES ON VALVES, CONSULT FACTORY

WARNING: the specifications/application data shown in our catalogs and data sheets are intended only as a general guide for the product described (herein). Any specific application should not be undertaken without independent study, evaluation, and testing for suitability.

PRE-ENGINEERED CIRCUIT, OPTION MODEL C*
BASE BODY - 20200003 = #6 SAE

BODY WEIGHT: .83 lbs (.37 kg)
DESCRIPTION

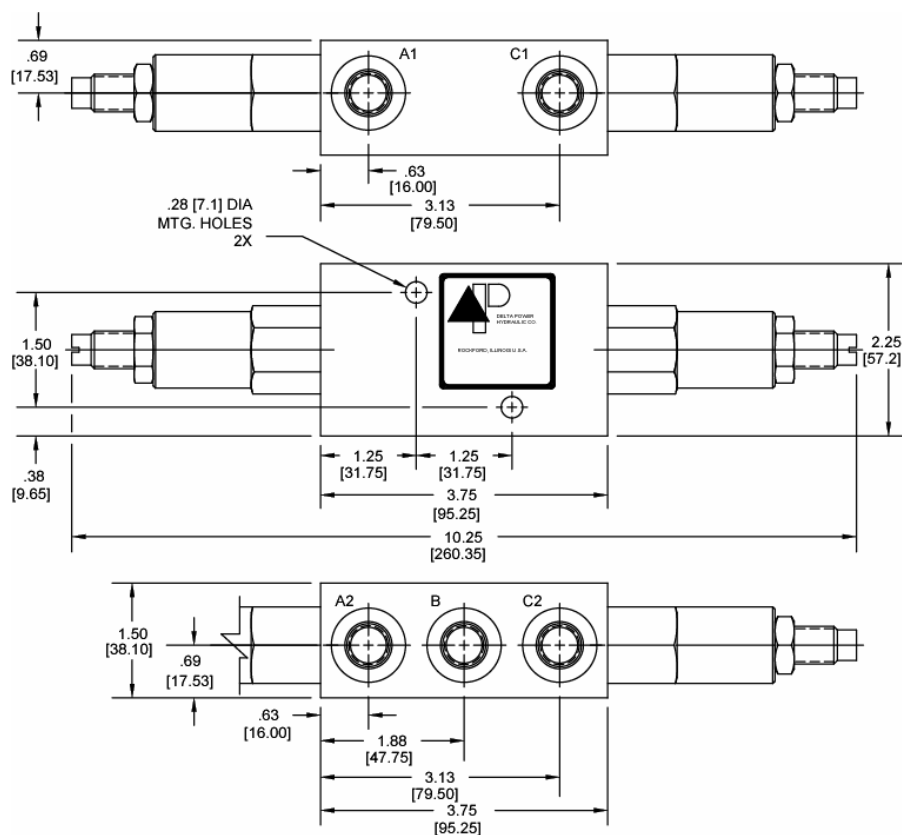
Pre-engineered circuit, option model C*.

OPERATION

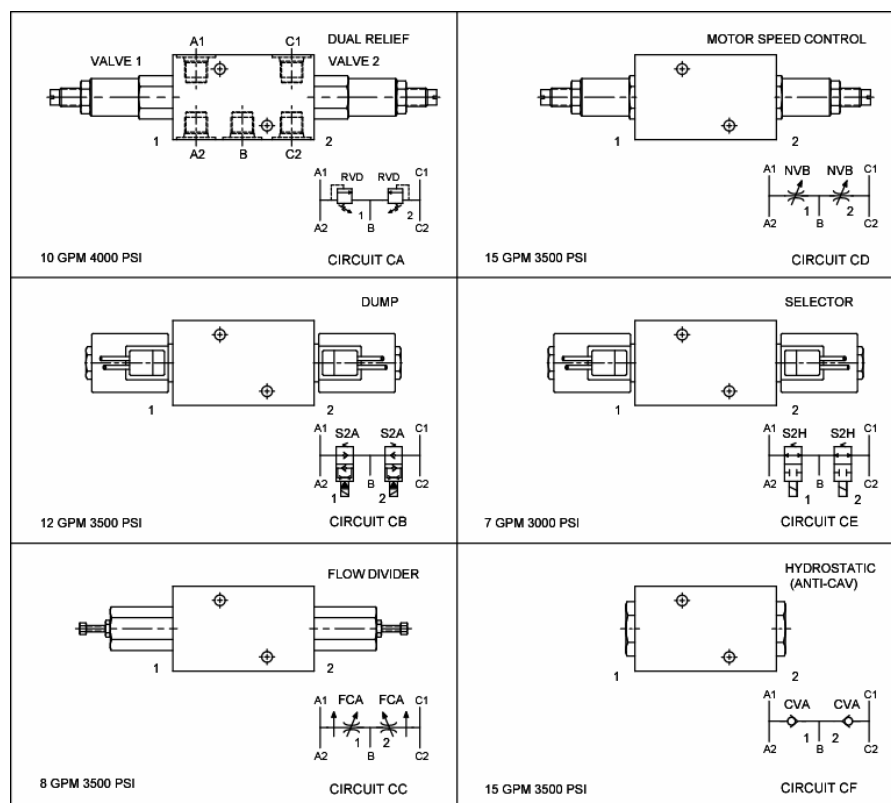
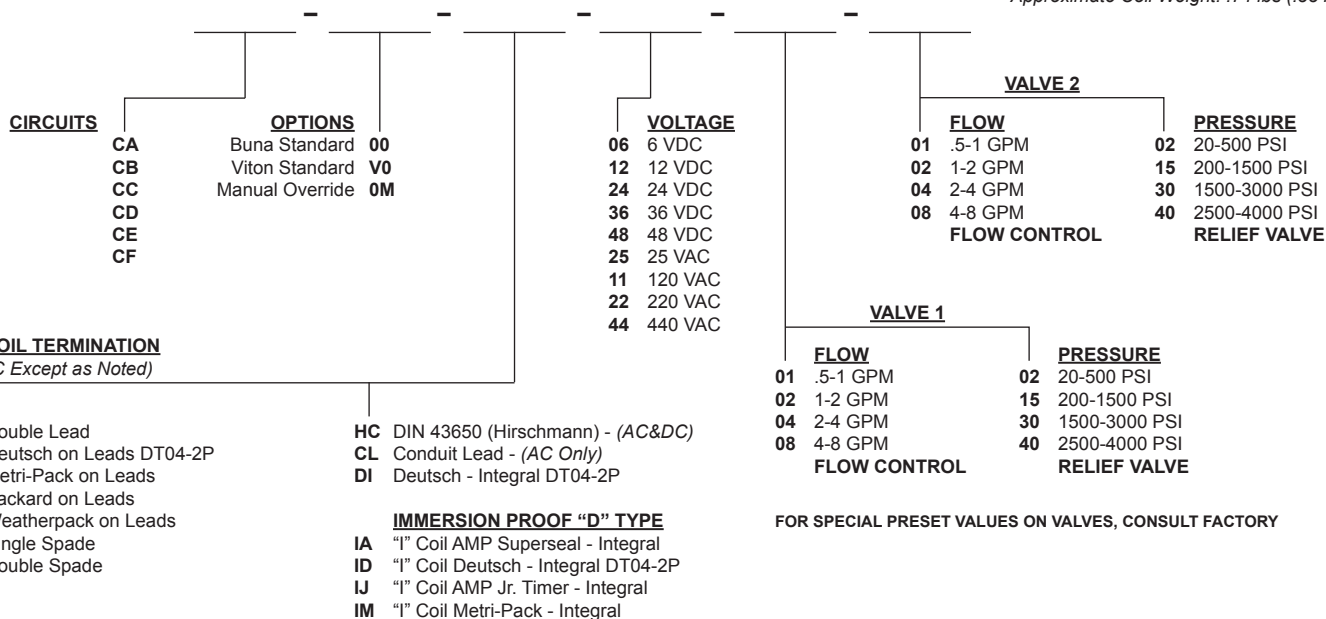
See options chart for specific operation.

VALVE SPECIFICATIONS

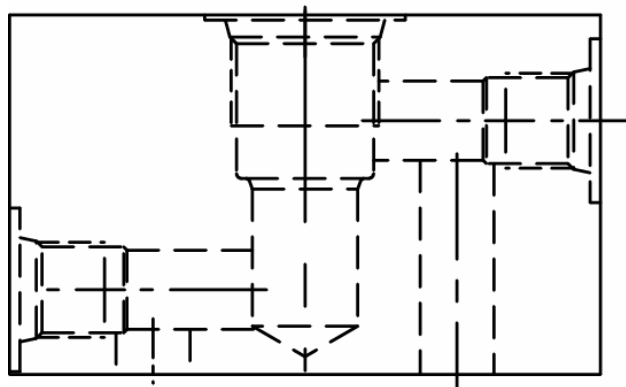
Nominal Flow	See Options Chart for Flow Range
Rated Operating Pressure	See Options Chart for Pres. Range
Viscosity Range	36 to 3000 SSU (3 to 647 cSt)
Filtration	30 micron nominal
Media Operating Temp. Range	-40° to 250°F (-40° to 120°C)
Operating Fluid Media	General Purpose Hydraulic Fluid
Cartridge Size	Delta Series 7/8-14 Thread
Cartridge Torque Requirements	30 ft-lbs (40.6 Nm)
Coil Torque Nut Requirements	4-6 ft-lbs (5.4-8.1 Nm)

DIMENSIONS


WARNING: the specifications/application data shown in our catalogs and data sheets are intended only as a general guide for the product described (herein). Any specific application should not be undertaken without independent study, evaluation, and testing for suitability.

OPTIONS CHART

ORDERING INFORMATION
Approximate Coil Weight: .74 lbs (.33 kg)


WARNING: the specifications/application data shown in our catalogs and data sheets are intended only as a general guide for the product described (herein). Any specific application should not be undertaken without independent study, evaluation, and testing for suitability.

PRE-ENGINEERED CIRCUIT, OPTION MODEL D*
BASE BODY - 20200004 = #6 SAE


BODY WEIGHT: .83 lbs (.37 kg)

DESCRIPTION

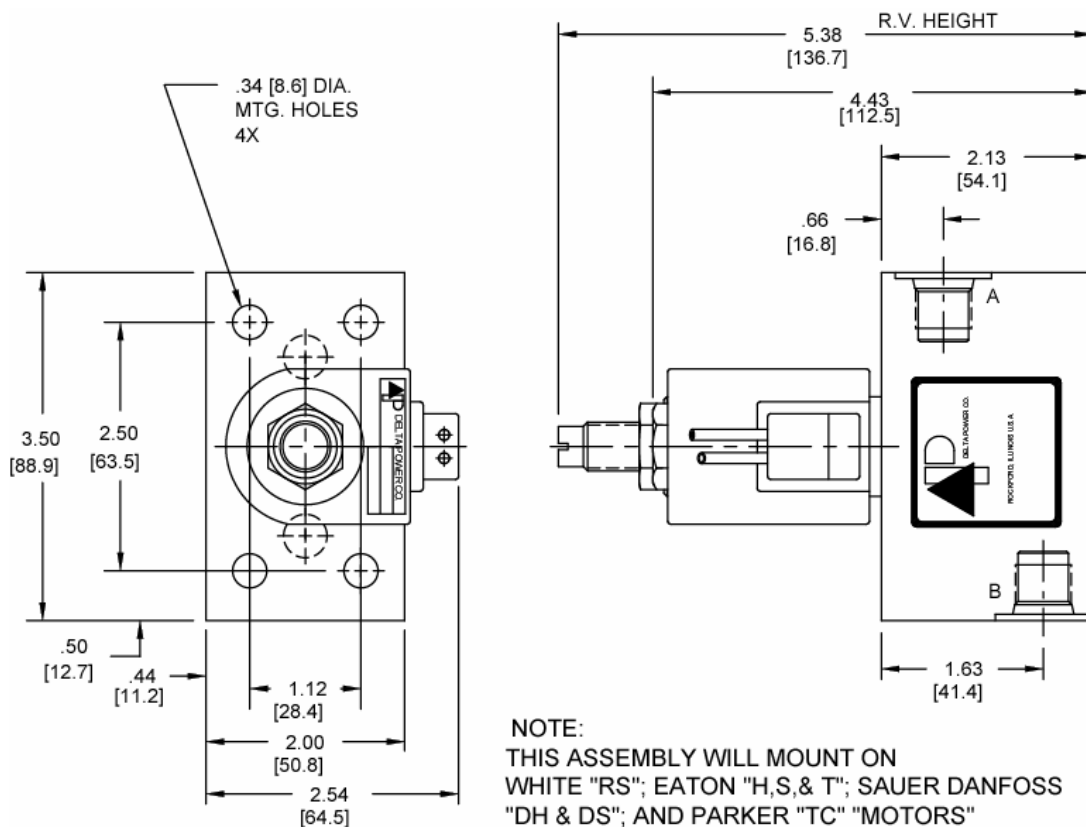
Pre-engineered circuit, option model D*.

OPERATION

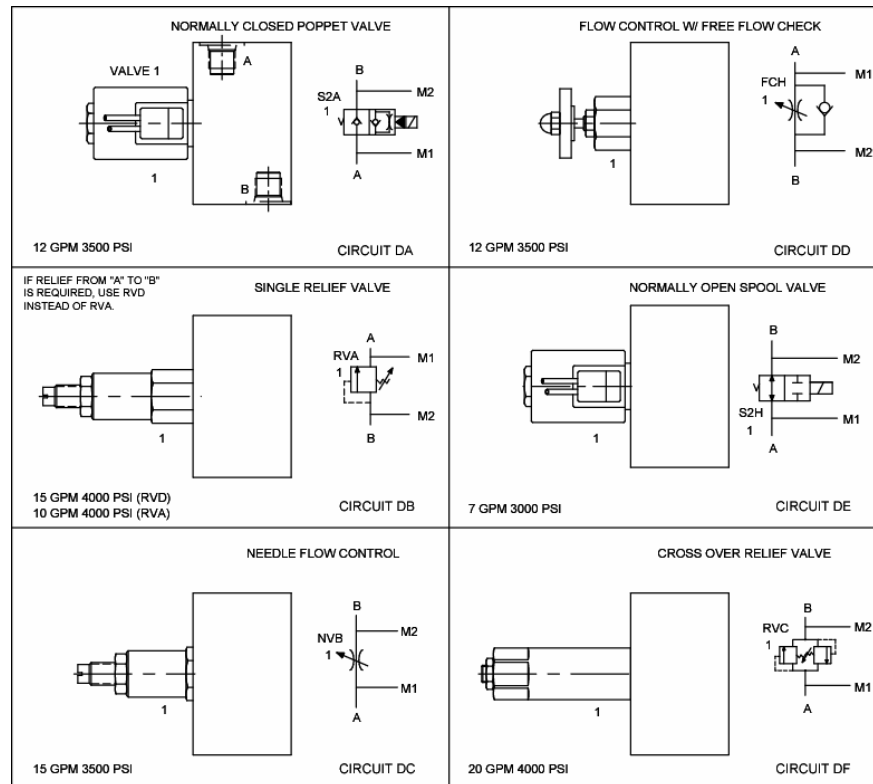
See options chart for specific operation.

VALVE SPECIFICATIONS

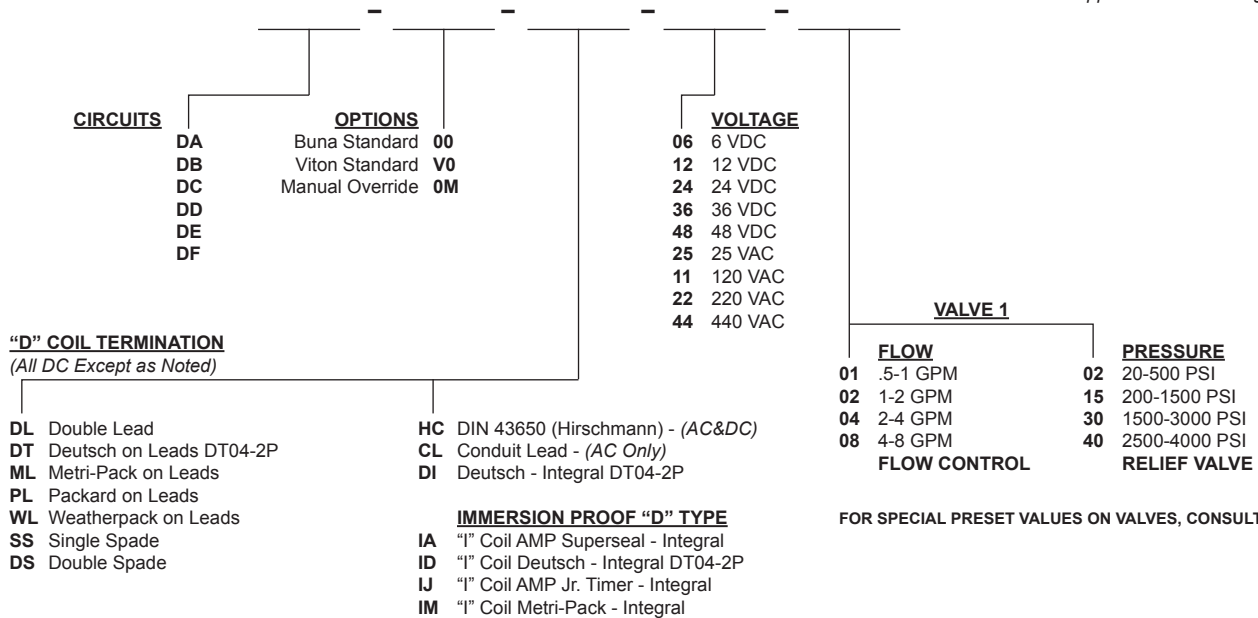
Nominal Flow	See Options Chart for Flow Range
Rated Operating Pressure	See Options Chart for Pres. Range
Viscosity Range	36 to 3000 SSU (3 to 647 cSt)
Filtration	30 micron nominal
Media Operating Temp. Range	-40° to 250°F (-40° to 120°C)
Operating Fluid Media	General Purpose Hydraulic Fluid
Cartridge Size	Delta Series 7/8-14 Thread
Cartridge Torque Requirements	30 ft-lbs (40.6 Nm)
Coil Torque Nut Requirements	4-6 ft-lbs (5.4-8.1 Nm)

DIMENSIONS


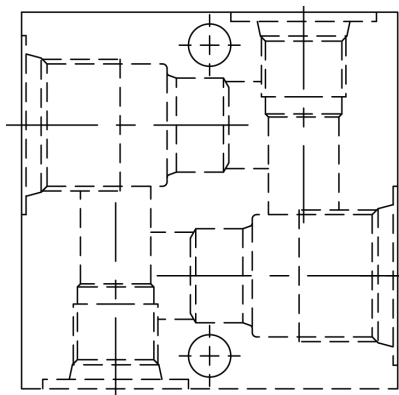
WARNING: the specifications/application data shown in our catalogs and data sheets are intended only as a general guide for the product described (herein). Any specific application should not be undertaken without independent study, evaluation, and testing for suitability.

OPTIONS CHART

ORDERING INFORMATION

Approximate Coil Weight: .74 lbs (.33 kg)



WARNING: the specifications/application data shown in our catalogs and data sheets are intended only as a general guide for the product described (herein). Any specific application should not be undertaken without independent study, evaluation, and testing for suitability.

PRE-ENGINEERED CIRCUIT, OPTION MODEL E*
BASE BODY - 20200005 = #6 SAE

BODY WEIGHT: .75 lbs (.34 kg)
DESCRIPTION

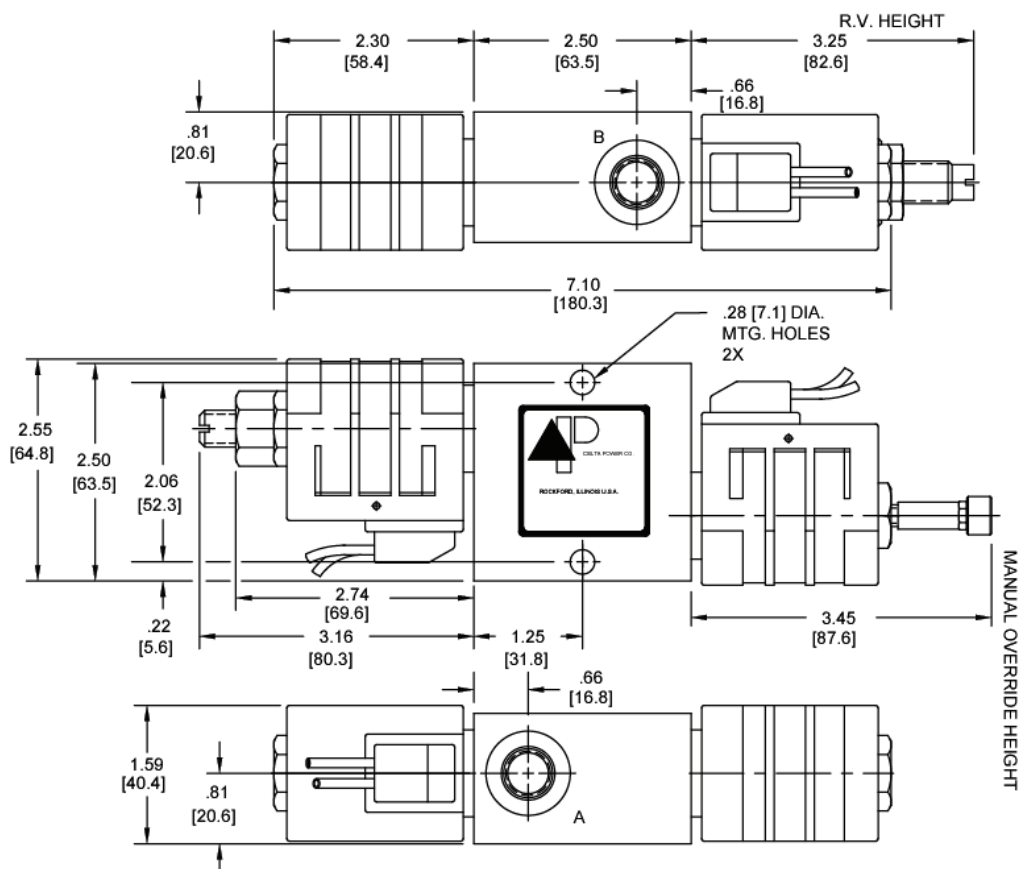
Pre-engineered circuit, option model E*.

OPERATION

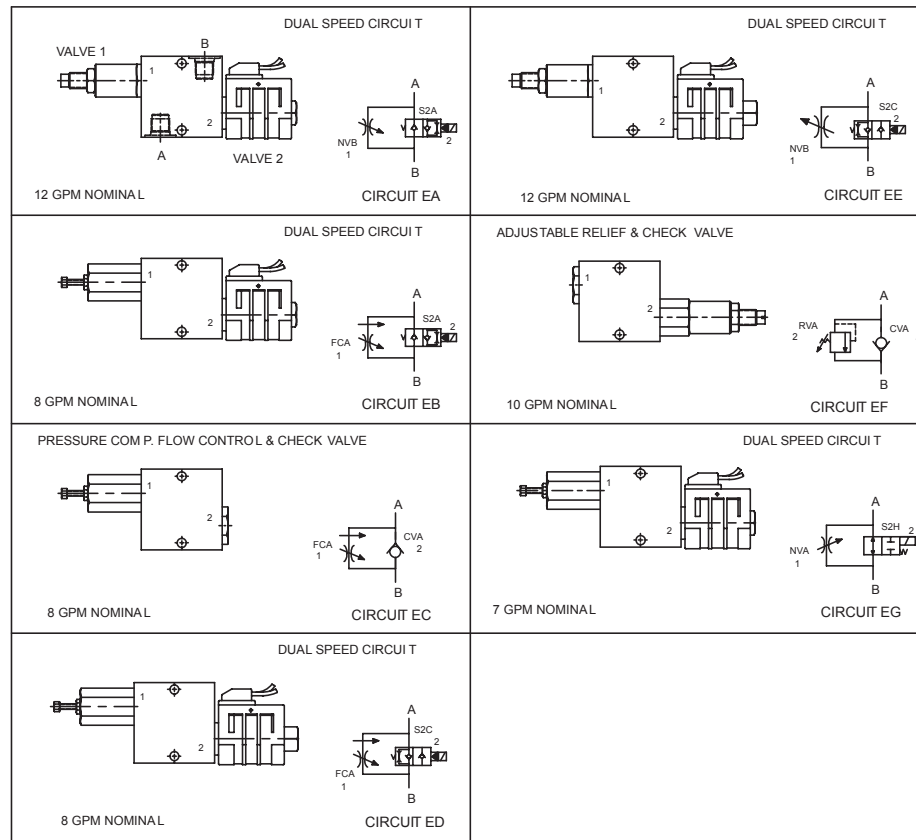
See options chart for specific operation.

VALVE SPECIFICATIONS

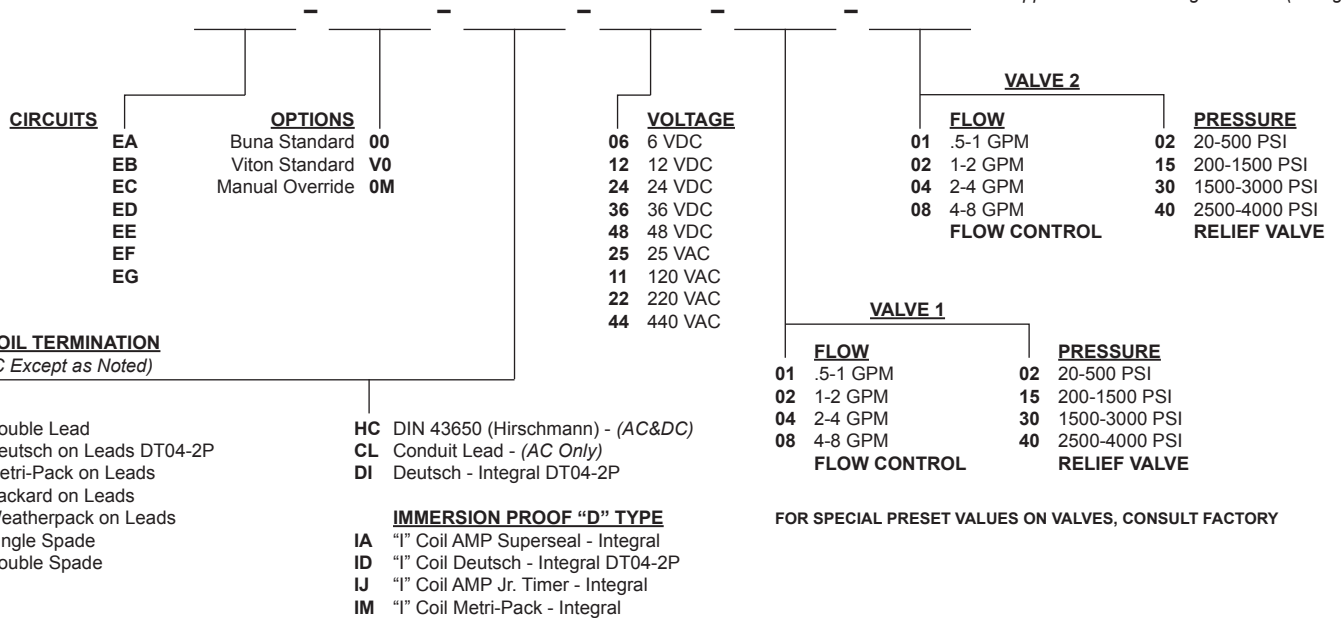
Nominal Flow	See Options Chart for Flow Range
Rated Operating Pressure	3500 PSI (241 bar)
Viscosity Range	36 to 3000 SSU (3 to 647 cSt)
Filtration	30 micron nominal
Media Operating Temp. Range	-40° to 250°F (-40° to 120°C)
Operating Fluid Media	General Purpose Hydraulic Fluid
Cartridge Size	Delta Series 7/8-14 Thread
Cartridge Torque Requirements	30 ft-lbs (40.6 Nm)
Coil Torque Nut Requirements	4-6 ft-lbs (5.4-8.1 Nm)

DIMENSIONS


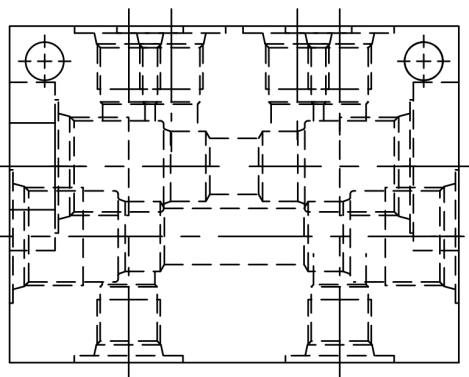
WARNING: the specifications/application data shown in our catalogs and data sheets are intended only as a general guide for the product described (herein). Any specific application should not be undertaken without independent study, evaluation, and testing for suitability.

OPTIONS CHART

ORDERING INFORMATION

Approximate Coil Weight: .74 lbs (.33 kg)



WARNING: the specifications/application data shown in our catalogs and data sheets are intended only as a general guide for the product described (herein). Any specific application should not be undertaken without independent study, evaluation, and testing for suitability.

PRE-ENGINEERED CIRCUIT, OPTION MODEL F*
BASE BODY - 20200006 = #6 SAE

BODY WEIGHT: 1.5 lbs (.68 kg)
DESCRIPTION

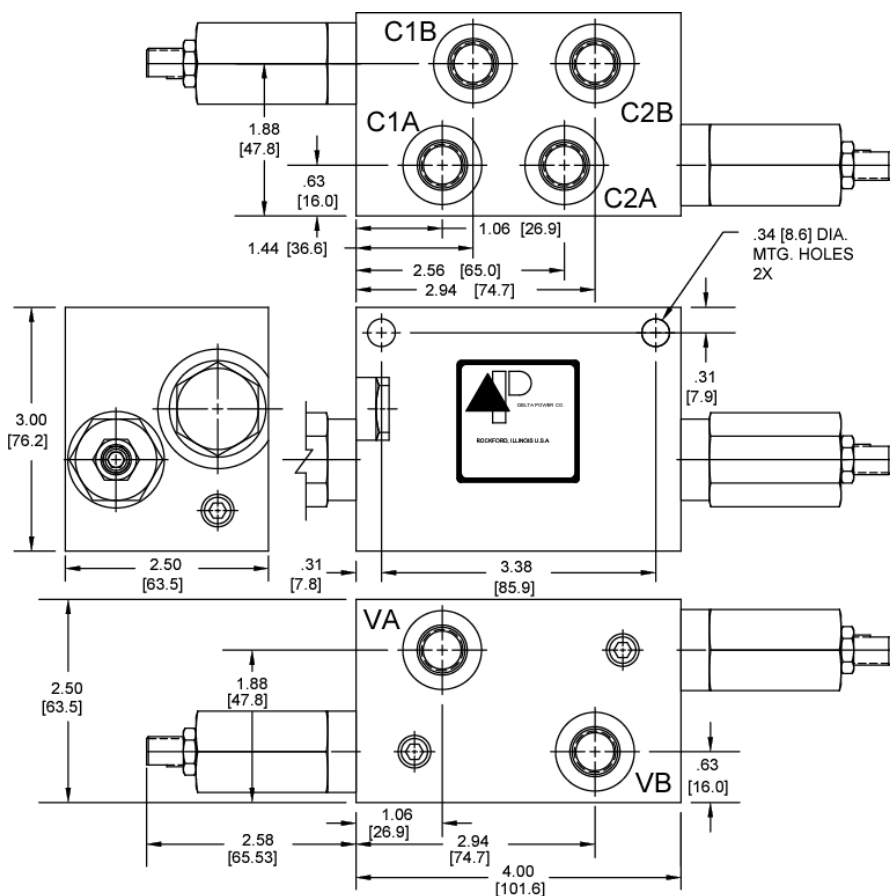
Pre-engineered circuit, option model F*.

OPERATION

See options chart for specific operation.

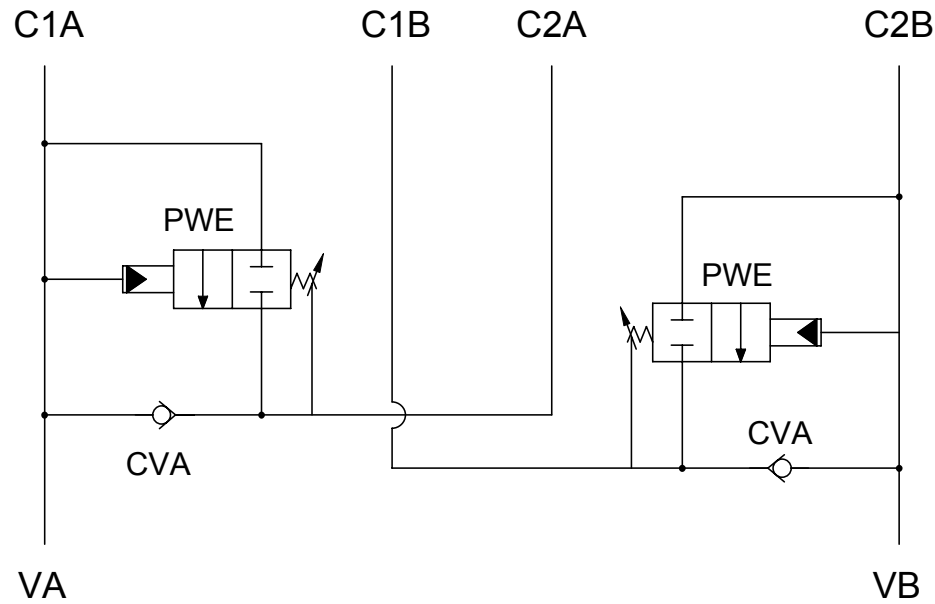
VALVE SPECIFICATIONS

Nominal Flow	9 GPM (34 LPM)
Rated Operating Pressure	50-1500 PSI (4-103 bar)
Viscosity Range	36 to 3000 SSU (3 to 647 cSt)
Filtration	30 micron nominal
Media Operating Temp. Range	-40° to 250°F (-40° to 120°C)
Operating Fluid Media	General Purpose Hydraulic Fluid
Cartridge Size	Delta Series 7/8-14 Thread
Cartridge Torque Requirements	30 ft-lbs (40.6 Nm)

DIMENSIONS


WARNING: the specifications/application data shown in our catalogs and data sheets are intended only as a general guide for the product described (herein). Any specific application should not be undertaken without independent study, evaluation, and testing for suitability.

TYPICAL SCHEMATIC



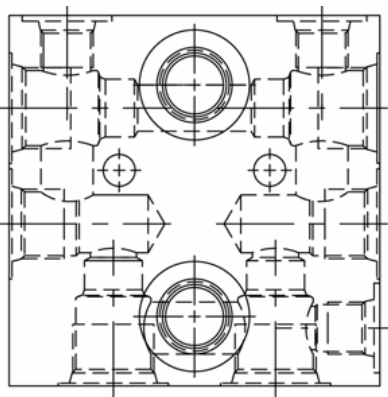
DUAL SEQUENCE VALVE MANIFOLD
AUTOMATICALLY CONTROLS THE
SEQUENCING OF TWO CYLINDERS.

CIRCUIT FA

ORDERING INFORMATION

CIRCUITS	OPTIONS	VALVE 1 PRESSURE	VALVE 2 PRESSURE
FA	Buna Standard 00 Viton Standard V0	04 50-425 PSI 15 400-1500 PSI	04 50-425 PSI 15 400-1500 PSI

FOR SPECIAL PRESET VALUES ON VALVES, CONSULT FACTORY

PRE-ENGINEERED CIRCUIT, OPTION MODEL G*
BASE BODY - 20200007 = #8 SAE

BODY WEIGHT: 1.36 lbs (.62 kg)
DESCRIPTION

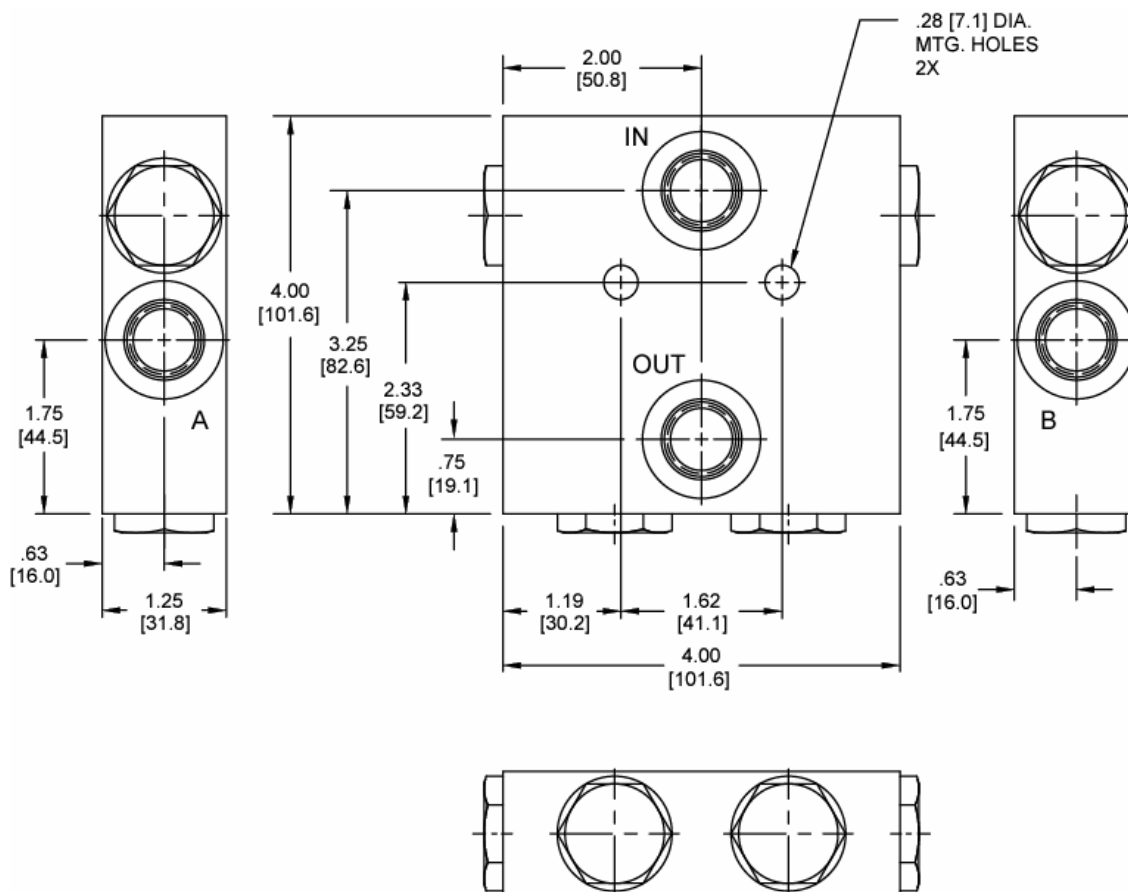
Pre-engineered circuit, option model G*.

OPERATION

See options chart for specific operation.

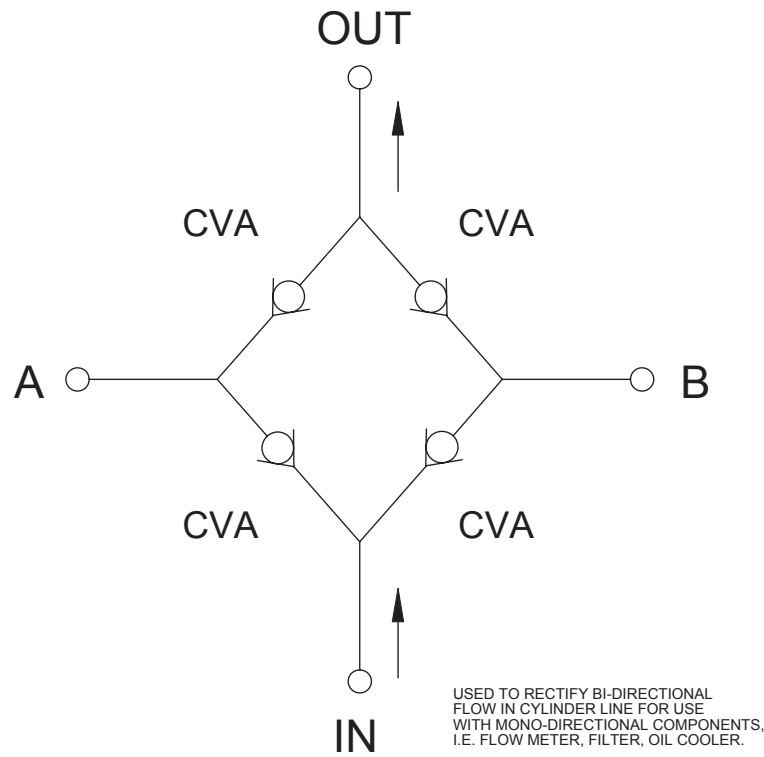
VALVE SPECIFICATIONS

Nominal Flow	15 GPM (57 LPM)
Rated Operating Pressure	3500 PSI (241 bar)
Viscosity Range	36 to 3000 SSU (3 to 647 cSt)
Filtration	30 micron nominal
Media Operating Temp. Range	-40° to 250°F (-40° to 120°C)
Operating Fluid Media	General Purpose Hydraulic Fluid
Cartridge Size	Delta Series 7/8-14 Thread
Cartridge Torque Requirements	30 ft-lbs (40.6 Nm)

DIMENSIONS


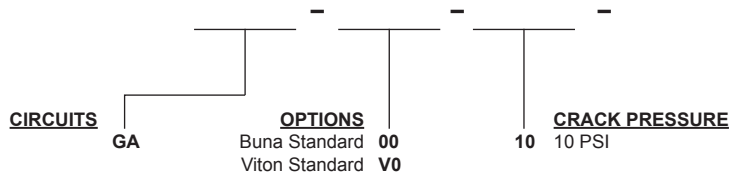
WARNING: the specifications/application data shown in our catalogs and data sheets are intended only as a general guide for the product described (herein). Any specific application should not be undertaken without independent study, evaluation, and testing for suitability.

TYPICAL SCHEMATIC



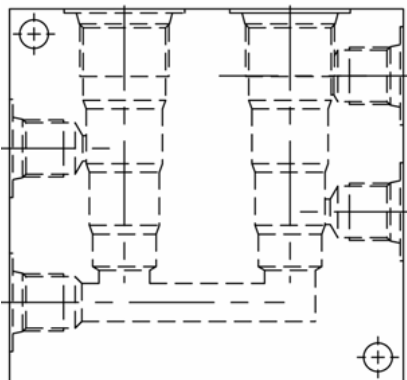
CIRCUIT GA RECTIFIER CIRCUIT

ORDERING INFORMATION



W7 / 12-2022

WARNING: the specifications/application data shown in our catalogs and data sheets are intended only as a general guide for the product described (herein). Any specific application should not be undertaken without independent study, evaluation, and testing for suitability.

PRE-ENGINEERED CIRCUIT, OPTION MODEL H*
BASE BODY - 20200008 = #6 SAE

BODY WEIGHT: 1.50 lbs (.68 kg)
DESCRIPTION

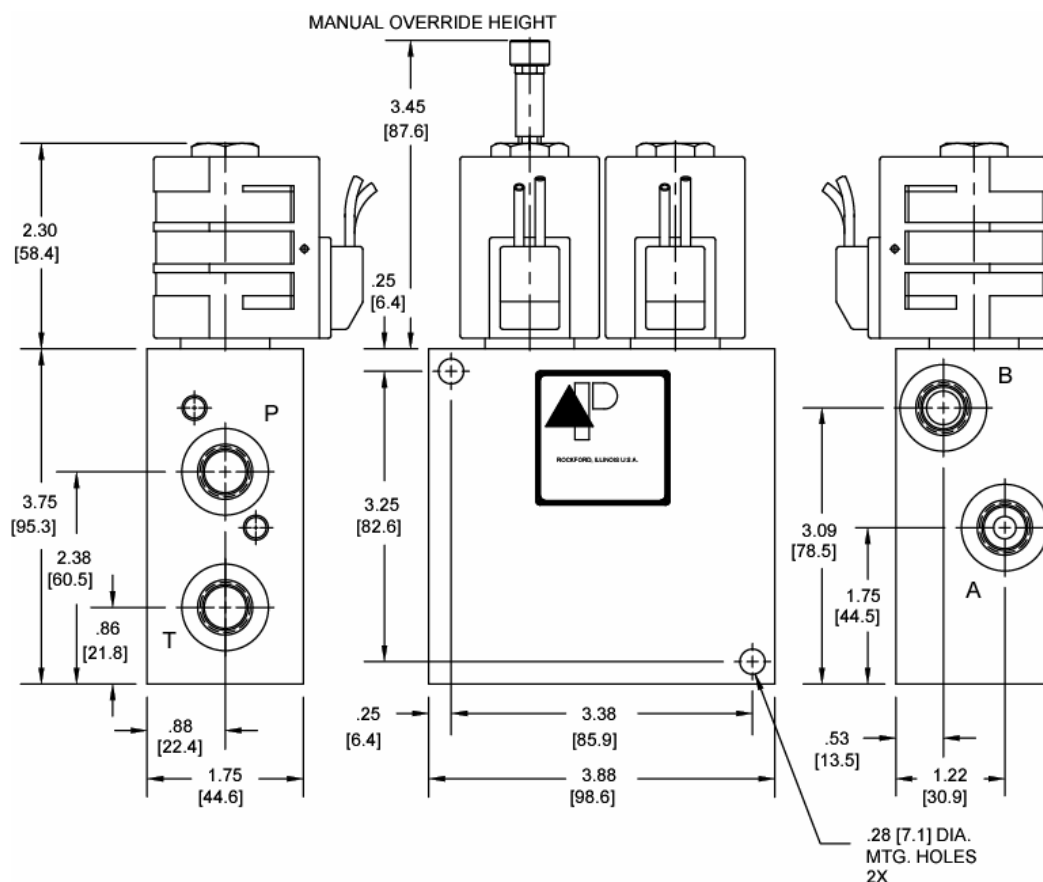
Pre-engineered circuit, option model H*.

OPERATION

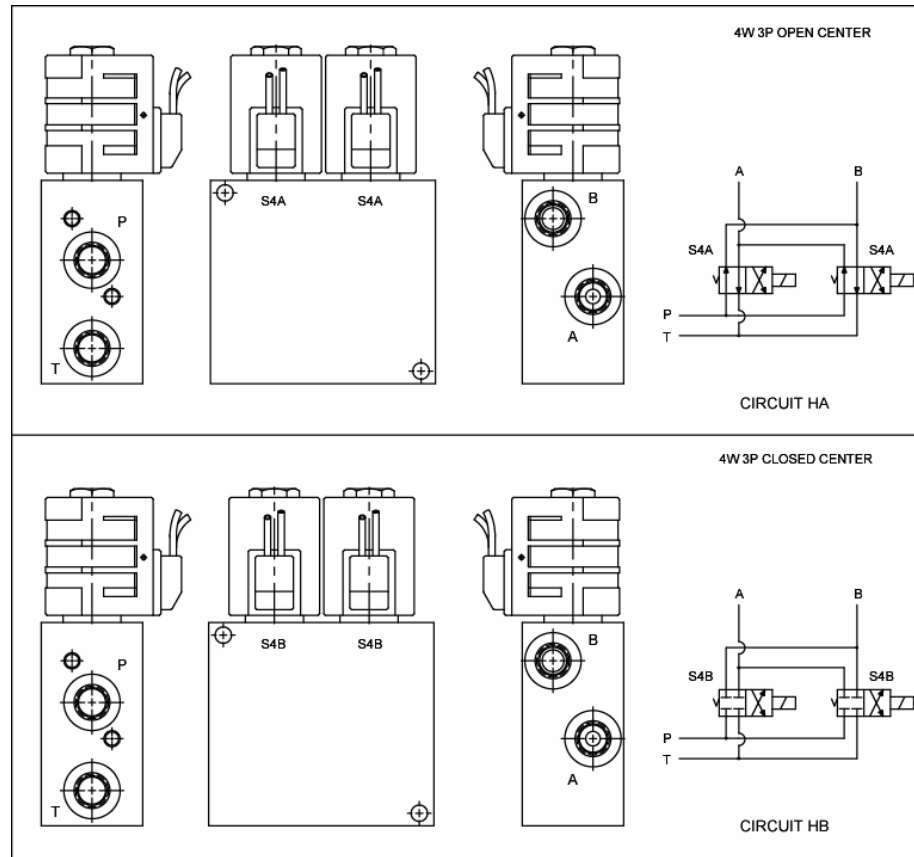
See options chart for specific operation.

VALVE SPECIFICATIONS

Nominal Flow	8 GPM (30 LPM)
Rated Operating Pressure	3000 PSI (207 bar)
Viscosity Range	36 to 3000 SSU (3 to 647 cSt)
Filtration	30 micron nominal
Media Operating Temp. Range	-40° to 250°F (-40° to 120°C)
Operating Fluid Media	General Purpose Hydraulic Fluid
Cartridge Size	Delta Series 7/8-14 Thread
Cartridge Torque Requirements	30 ft-lbs (40.6 Nm)
Coil Torque Nut Requirements	4-6 ft-lbs (5.4-8.1 Nm)

DIMENSIONS


WARNING: the specifications/application data shown in our catalogs and data sheets are intended only as a general guide for the product described (herein). Any specific application should not be undertaken without independent study, evaluation, and testing for suitability.

OPTIONS CHART

ORDERING INFORMATION

Approximate Coil Weight: .74 lbs (.33 kg)

<u>CIRCUITS</u>	<u>OPTIONS</u>	<u>VOLTAGE</u>
HA	Buna Standard 00	06 6 VDC
HB	Viton Standard V0	12 12 VDC
	Manual Override 0M	24 24 VDC
		36 36 VDC
		48 48 VDC
		25 25 VAC
		11 120 VAC
		22 220 VAC
		44 440 VAC

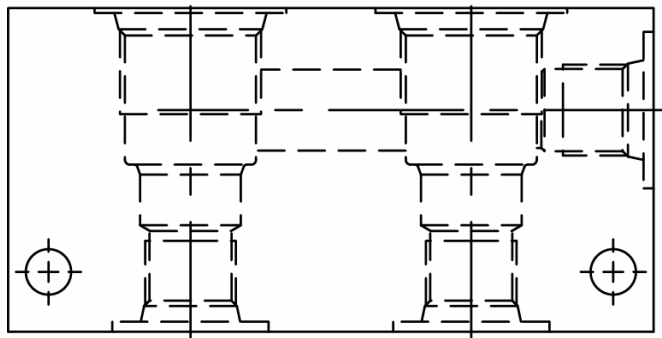
"D" COIL TERMINATION
(All DC Except as Noted)

DL Double Lead
DT Deutsch on Leads DT04-2P
ML Metri-Pack on Leads
PL Packard on Leads
WL Weatherpack on Leads

SS Single Spade
DS Double Spade
HC DIN 43650 (Hirschmann) - (AC&DC)
CL Conduit Lead - (AC Only)
DI Deutsch - Integral DT04-2P

IMMERSION PROOF "D" TYPE

IA "I" Coil AMP Superseal - Integral
ID "I" Coil Deutsch - Integral DT04-2P
IJ "I" Coil AMP Jr. Timer - Integral
IM "I" Coil Metri-Pack - Integral

PRE-ENGINEERED CIRCUIT, OPTION MODEL I*
BASE BODY - 20200009 = #6 SAE

BODY WEIGHT: .83 lbs (.37 kg)
DESCRIPTION

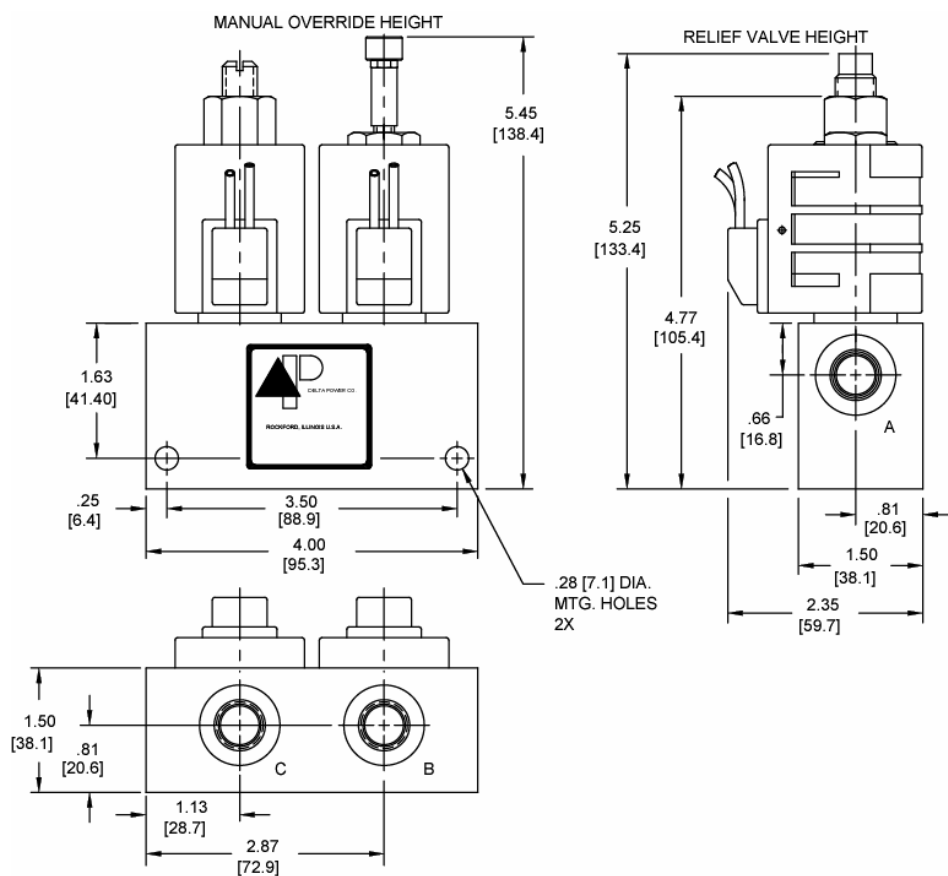
Pre-engineered circuit, option model I*.

OPERATION

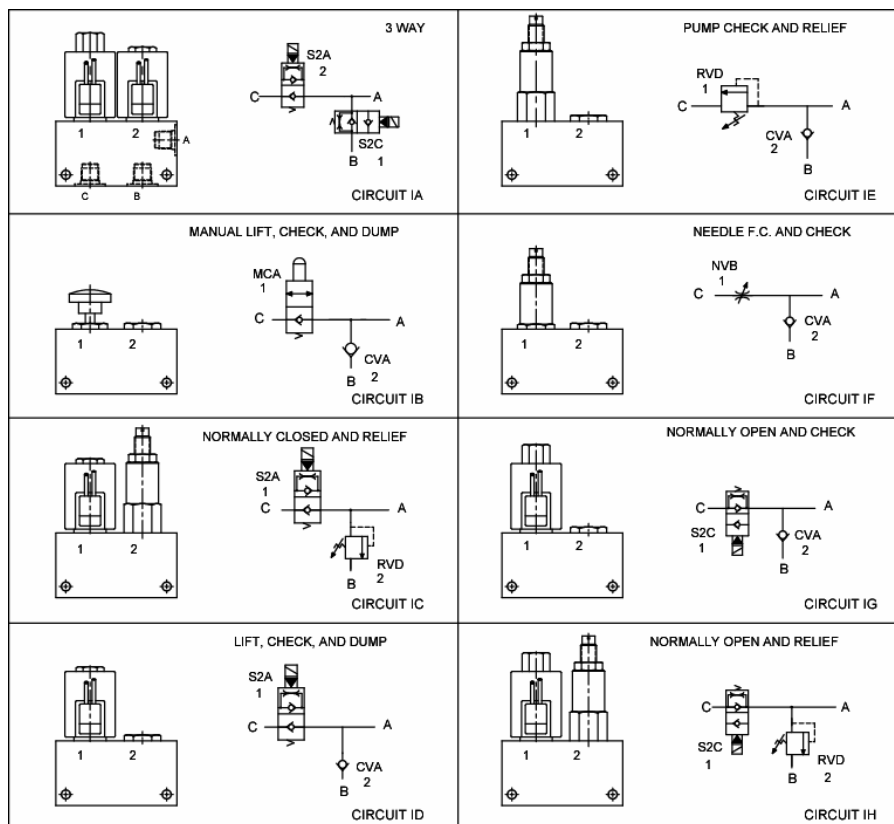
See model options for specific operation (back).

VALVE SPECIFICATIONS

Nominal Flow	12 GPM (45 LPM)
Rated Operating Pressure	3500 PSI (241 bar)
Viscosity Range	36 to 3000 SSU (3 to 647 cSt)
Filtration	30 micron nominal
Media Operating Temp. Range	-40° to 250°F (-40° to 120°C)
Operating Fluid Media	General Purpose Hydraulic Fluid
Cartridge Size	Delta Series 7/8-14 Thread
Cartridge Torque Requirements	30 ft-lbs (40.6 Nm)
Coil Torque Nut Requirements	4-6 ft-lbs (5.4-8.1 Nm)

DIMENSIONS


WARNING: the specifications/application data shown in our catalogs and data sheets are intended only as a general guide for the product described (herein). Any specific application should not be undertaken without independent study, evaluation, and testing for suitability.

OPTIONS CHART

ORDERING INFORMATION

Approximate Coil Weight: .74 lbs (.33 kg)

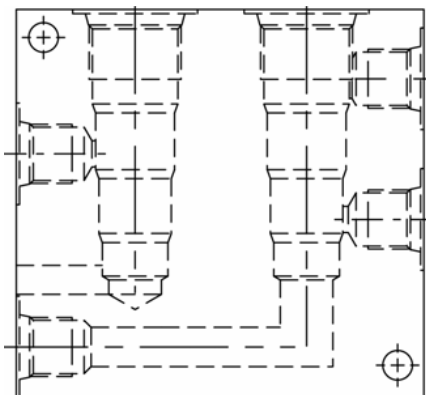
CIRCUITS	OPTIONS	VOLTAGE	VALVE 2
IA	Buna Standard 00	06 6 VDC	01 .5-1 GPM
IB	Viton Standard V0	12 12 VDC	02 1-2 GPM
IC	Manual Override 0M	24 24 VDC	04 2-4 GPM
ID		36 36 VDC	08 4-8 GPM
IE		48 48 VDC	FLOW CONTROL
IF		25 25 VAC	
IG		11 120 VAC	VALVE 1
IH		22 220 VAC	01 .5-1 GPM
		44 440 VAC	02 1-2 GPM
			04 2-4 GPM
			08 4-8 GPM
			FLOW CONTROL
			02 20-500 PSI
			15 200-1500 PSI
			30 1500-3000 PSI
			40 2500-4000 PSI
			RELIEF VALVE

"D" COIL TERMINATION (All DC Except as Noted)	IMMERSION PROOF "D" TYPE
DL Double Lead	IA "I" Coil AMP Superseal - Integral
DT Deutsch on Leads DT04-2P	ID "I" Coil Deutsch - Integral DT04-2P
ML Metri-Pack on Leads	IJ "I" Coil AMP Jr. Timer - Integral
PL Packard on Leads	IM "I" Coil Metri-Pack - Integral
WL Weatherpack on Leads	
SS Single Spade	
DS Double Spade	

VALVE 1	VALVE 2
01 .5-1 GPM	01 .5-1 GPM
02 1-2 GPM	02 1-2 GPM
04 2-4 GPM	04 2-4 GPM
08 4-8 GPM	08 4-8 GPM
FLOW CONTROL	FLOW CONTROL
02 20-500 PSI	02 20-500 PSI
15 200-1500 PSI	15 200-1500 PSI
30 1500-3000 PSI	30 1500-3000 PSI
40 2500-4000 PSI	40 2500-4000 PSI
RELIEF VALVE	RELIEF VALVE

FOR SPECIAL PRESET VALUES ON VALVES, CONSULT FACTORY

WARNING: the specifications/application data shown in our catalogs and data sheets are intended only as a general guide for the product described (herein). Any specific application should not be undertaken without independent study, evaluation, and testing for suitability.

PRE-ENGINEERED CIRCUIT, OPTION MODEL J*
BASE BODY - 20200010 = #6 SAE

BODY WEIGHT: 1.50 lbs (.68 kg)
DESCRIPTION

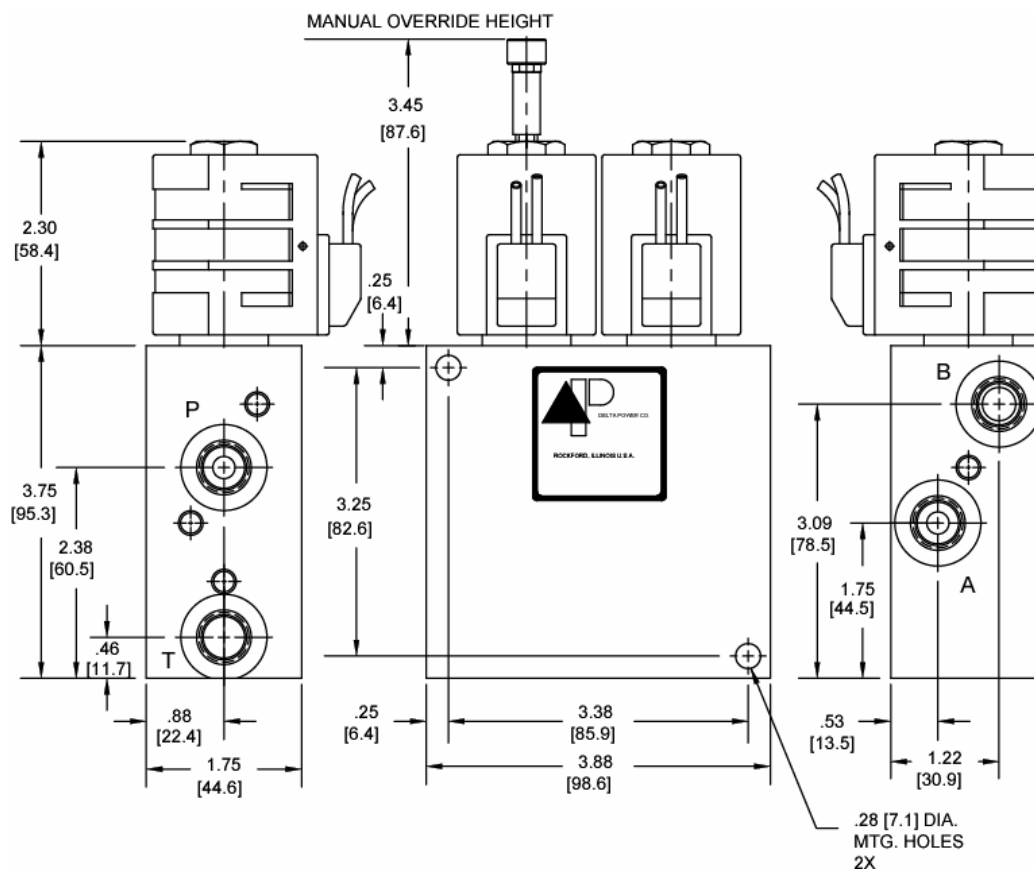
Pre-engineered circuit, option model J*.

OPERATION

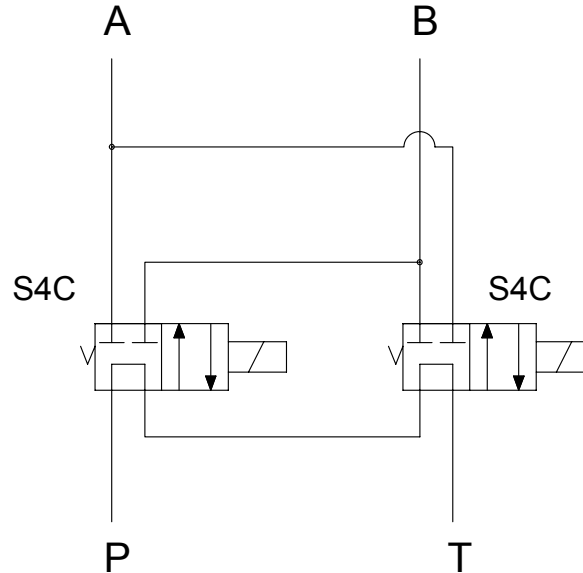
See typical schematic for specific operation.

VALVE SPECIFICATIONS

Nominal Flow	8 GPM (30 LPM)
Rated Operating Pressure	3000 PSI (207 bar)
Viscosity Range	36 to 3000 SSU (3 to 647 cSt)
Filtration	30 micron nominal
Media Operating Temp. Range	-40° to 250°F (-40° to 120°C)
Operating Fluid Media	General Purpose Hydraulic Fluid
Cartridge Size	Delta Series 7/8-14 Thread
Cartridge Torque Requirements	30 ft-lbs (40.6 Nm)
Coil Torque Nut Requirements	4-6 ft-lbs (5.4-8.1 Nm)

DIMENSIONS


WARNING: the specifications/application data shown in our catalogs and data sheets are intended only as a general guide for the product described (herein). Any specific application should not be undertaken without independent study, evaluation, and testing for suitability.

TYPICAL SCHEMATIC
4W 3P TANDEM CENTER

CIRCUIT JA
ORDERING INFORMATION

Approximate Coil Weight: .74 lbs (.33 kg)

<u>CIRCUITS</u>	<u>OPTIONS</u>	<u>VOLTAGE</u>
JA	Buna Standard 00 Viton Standard V0 Manual Override 0M	06 6 VDC 12 12 VDC 24 24 VDC 36 36 VDC 48 48 VDC 25 25 VAC 11 120 VAC 22 220 VAC 44 440 VAC

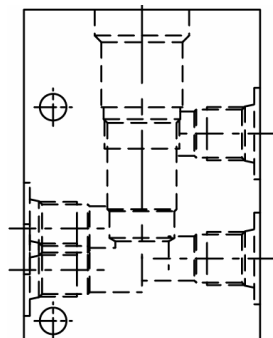
"D" COIL TERMINATION
(All DC Except as Noted)

DL Double Lead
DT Deutsch on Leads DT04-2P
ML Metri-Pack on Leads
PL Packard on Leads
WL Weatherpack on Leads

SS Single Spade
DS Double Spade
HC DIN 43650 (Hirschmann) - (AC&DC)
CL Conduit Lead - (AC Only)
DI Deutsch - Integral DT04-2P

IMMERSION PROOF "D" TYPE

IA "I" Coil AMP Superseal - Integral
ID "I" Coil Deutsch - Integral DT04-2P
IJ "I" Coil AMP Jr. Timer - Integral
IM "I" Coil Metri-Pack - Integral

PRE-ENGINEERED CIRCUIT, OPTION MODEL L*
BASE BODY - 20200012 = #6 SAE

BODY WEIGHT: 1.80 lbs (.82 kg)
DESCRIPTION

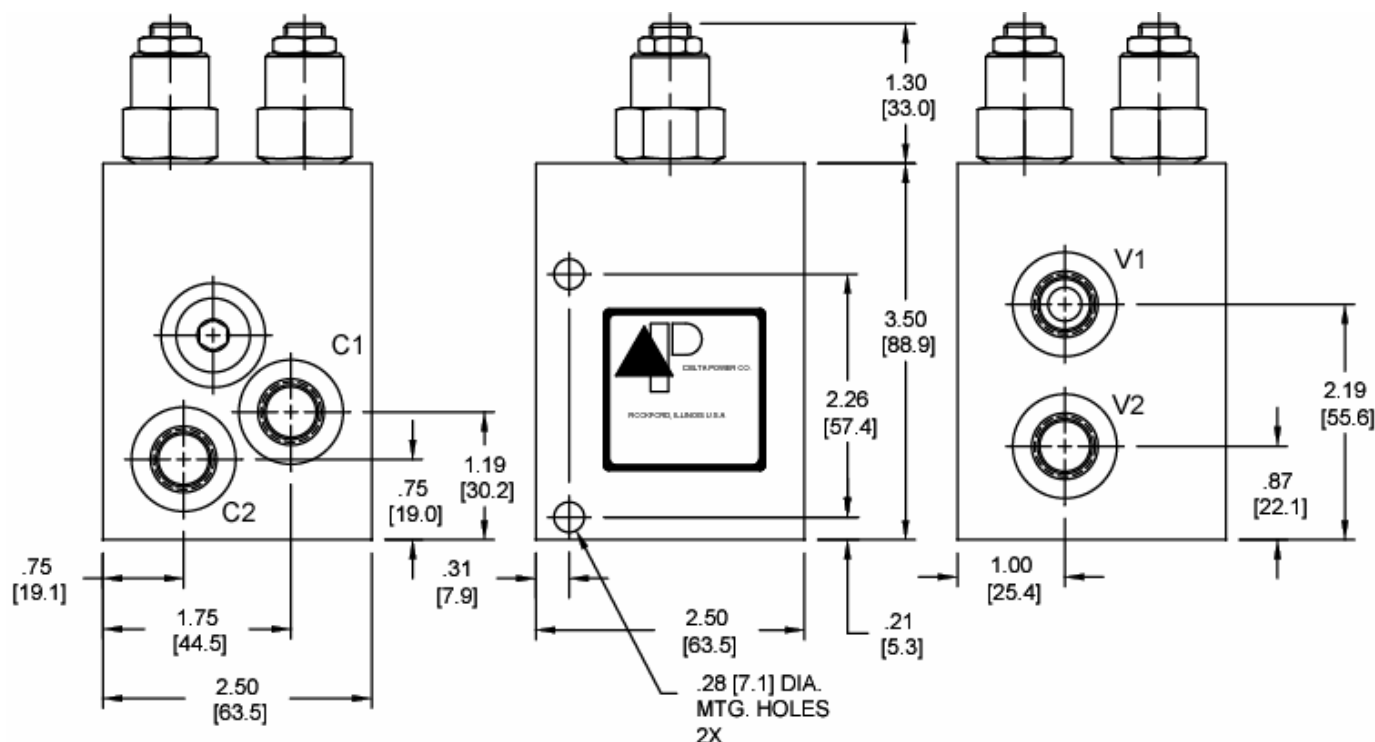
Pre-engineered circuit, option model L*.

OPERATION

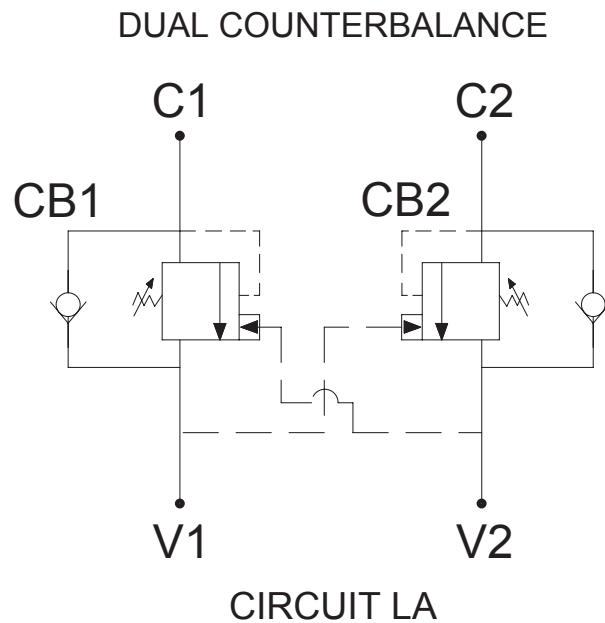
See typical schematic for specific operation.

VALVE SPECIFICATIONS

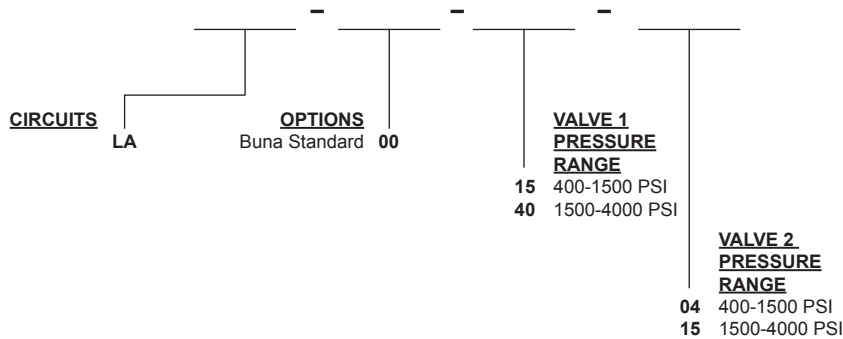
Nominal Flow	15 GPM (60 LPM)
Rated Operating Pressure	See Options Chart for Pres. Range
Viscosity Range	36 to 3000 SSU (3 to 647 cSt)
Filtration	30 micron nominal
Media Operating Temp. Range	-40° to 250°F (-40° to 120°C)
Operating Fluid Media	General Purpose Hydraulic Fluid
Cartridge Size	Special Series M20X1.5-H6
	Thread
Cartridge Torque Requirements	30 ft-lbs (40.6 Nm)

DIMENSIONS


WARNING: the specifications/application data shown in our catalogs and data sheets are intended only as a general guide for the product described (herein). Any specific application should not be undertaken without independent study, evaluation, and testing for suitability.

TYPICAL SCHEMATIC

ORDERING INFORMATION

Approximate Coil Weight: .74 lbs (.33 kg)

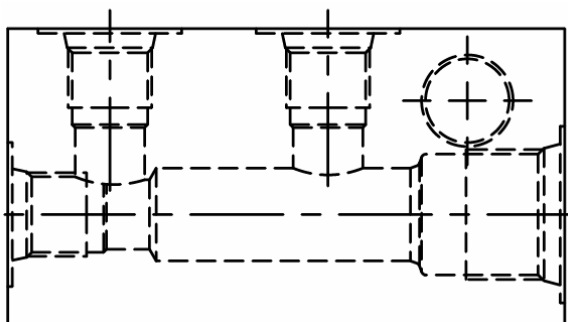


Note: Aluminum Bodies are NOT durability rated for 4000 PSI (276 bar). Consult factory for body options.

FOR SPECIAL PRESET VALUES ON VALVES, CONSULT FACTORY

W7 / 12-2022

WARNING: the specifications/application data shown in our catalogs and data sheets are intended only as a general guide for the product described (herein). Any specific application should not be undertaken without independent study, evaluation, and testing for suitability.

PRE-ENGINEERED CIRCUIT, OPTION MODEL M*
BASE BODY - 20200013 = #6 SAE

BODY WEIGHT: 1.09 lbs (.49 kg)
DESCRIPTION

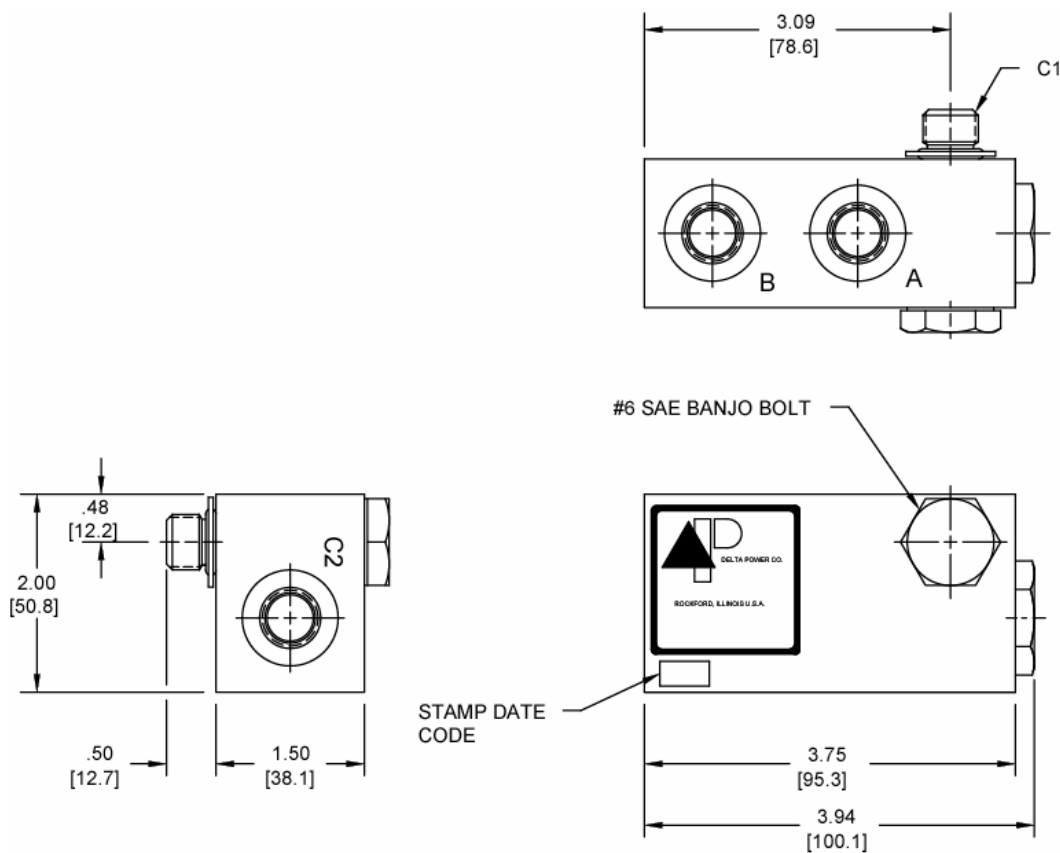
Pre-engineered circuit, option model M*.

OPERATION

See typical schematic for specific operation.

VALVE SPECIFICATIONS

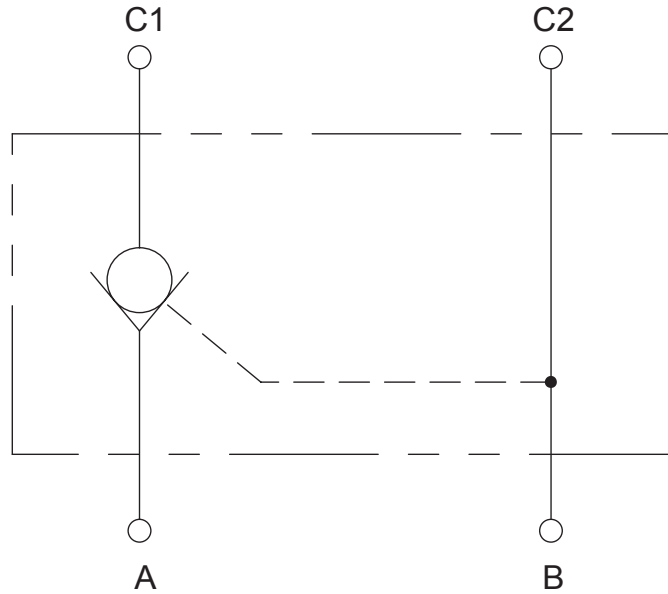
Nominal Flow	12 GPM (45 LPM)
Rated Operating Pressure	3500 PSI (241 bar)
Viscosity Range	36 to 3000 SSU (3 to 647 cSt)
Filtration	30 micron nominal
Media Operating Temp. Range	-40° to 250°F (-40° to 120°C)
Operating Fluid Media	General Purpose Hydraulic Fluid
Ratio	4:1
Cartridge Size	M20 X 1.5
Cartridge Torque Requirements	30 ft-lbs (40.6 Nm)

DIMENSIONS


WARNING: the specifications/application data shown in our catalogs and data sheets are intended only as a general guide for the product described (herein). Any specific application should not be undertaken without independent study, evaluation, and testing for suitability.

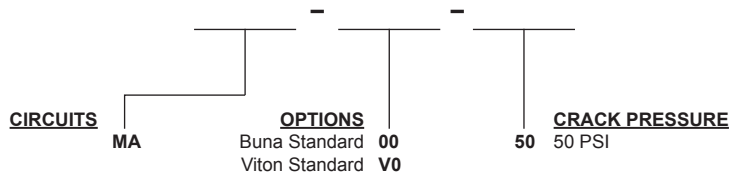
TYPICAL SCHEMATIC

P.O. CHECK CIRCUIT
4:1 RATIO



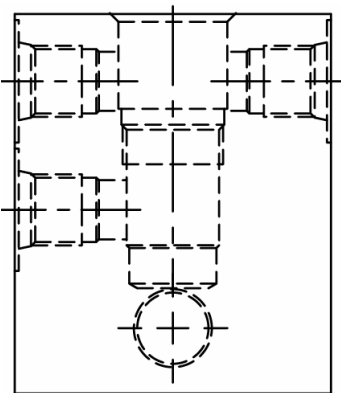
CIRCUIT MA

ORDERING INFORMATION



W7 / 12-2022

WARNING: the specifications/application data shown in our catalogs and data sheets are intended only as a general guide for the product described (herein). Any specific application should not be undertaken without independent study, evaluation, and testing for suitability.

PRE-ENGINEERED CIRCUIT, OPTION MODEL O*
BASE BODY - 20200015 = #6 SAE

BODY WEIGHT: 1.09 lbs (.49 kg)
DESCRIPTION

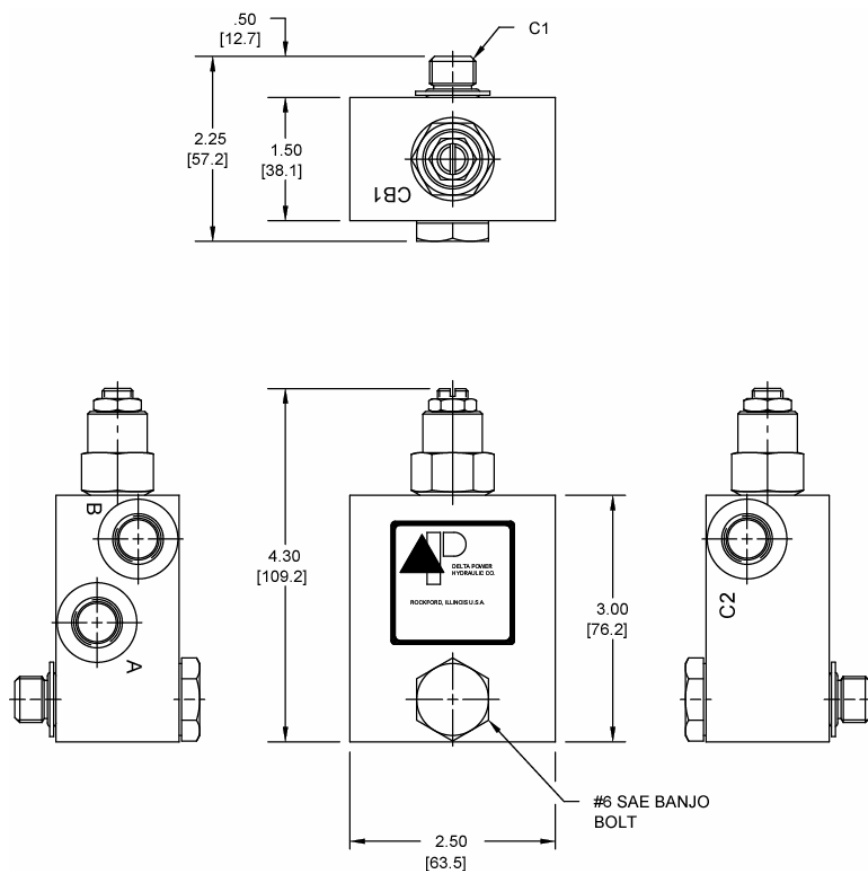
Pre-engineered circuit, option model O*.

OPERATION

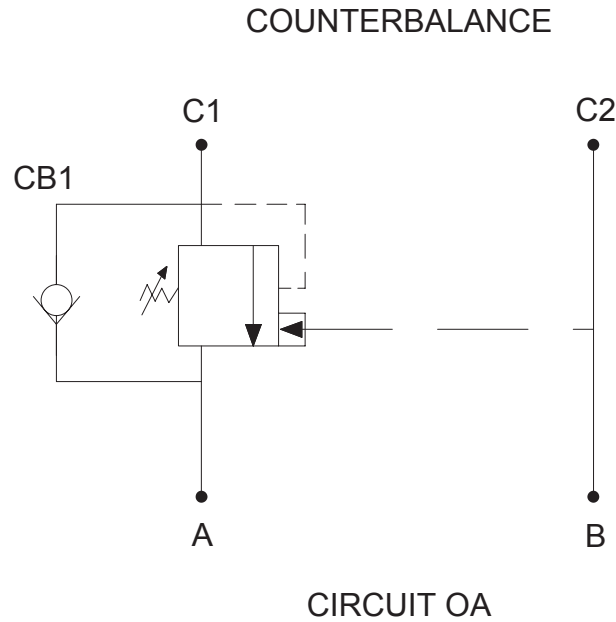
See options chart for specific operation.

VALVE SPECIFICATIONS

Nominal Flow	15 GPM (57 LPM)
Rated Operating Pressure	3500 PSI (241 bar)
Viscosity Range	36 to 3000 SSU (3 to 647 cSt)
Filtration	30 micron nominal
Media Operating Temp. Range	-40° to 250°F (-40° to 120°C)
Operating Fluid Media	General Purpose Hydraulic Fluid
Cartridge Size	M20 X 1.5
Cartridge Torque Requirements	30 ft-lbs (40.6 Nm)

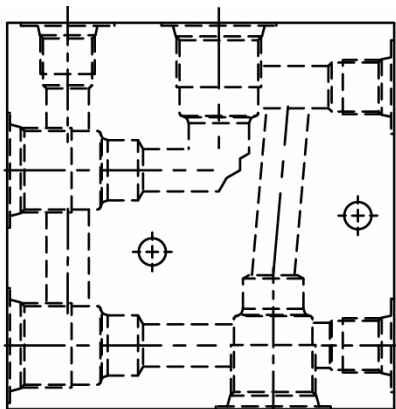
DIMENSIONS


WARNING: the specifications/application data shown in our catalogs and data sheets are intended only as a general guide for the product described (herein). Any specific application should not be undertaken without independent study, evaluation, and testing for suitability.

TYPICAL SCHEMATIC

ORDERING INFORMATION

<u>CIRCUITS</u>	<u>OPTIONS</u>	<u>PRESSURE RANGE</u>
OA	Buna Standard 00	15 400-1500 PSI
	Viton Standard V0	40 1500-4000 PSI

FOR SPECIAL PRESET VALUES ON VALVES, CONSULT FACTORY

PRE-ENGINEERED CIRCUIT, OPTION MODEL P*
BASE BODY - 20200017 = #6 SAE

BODY WEIGHT: 1.5 lbs (.68 kg)
DESCRIPTION

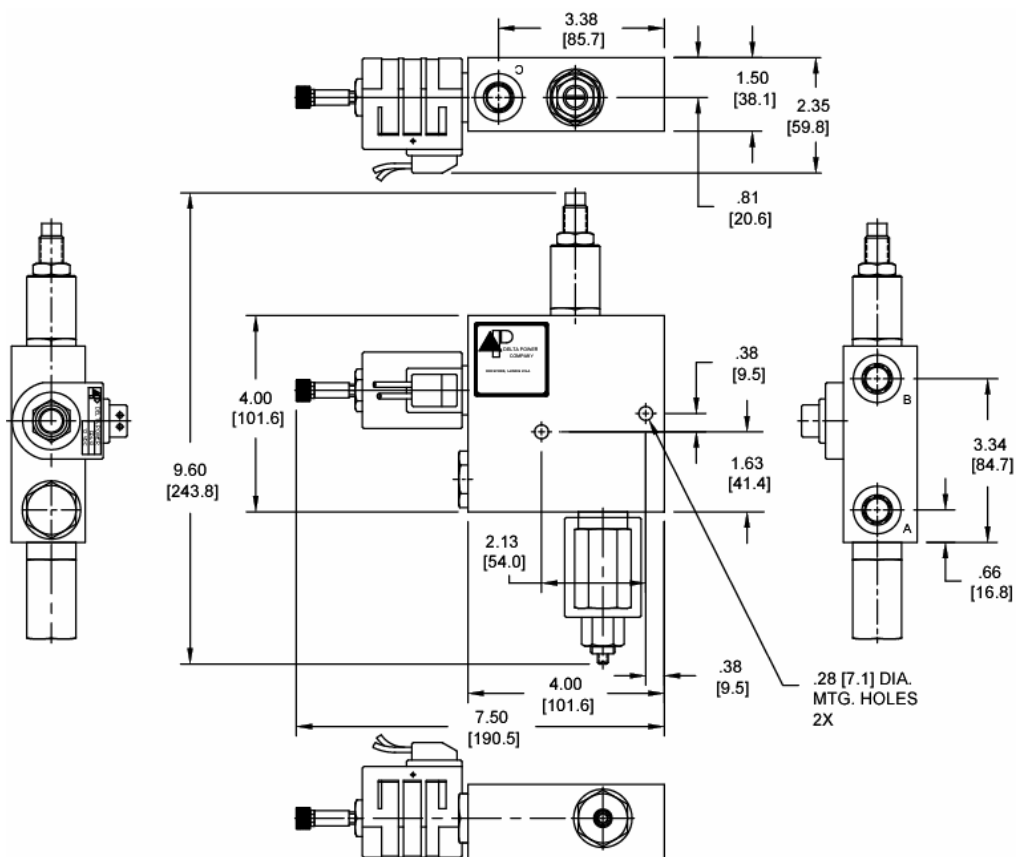
Pre-engineered circuit, option model P*.

OPERATION

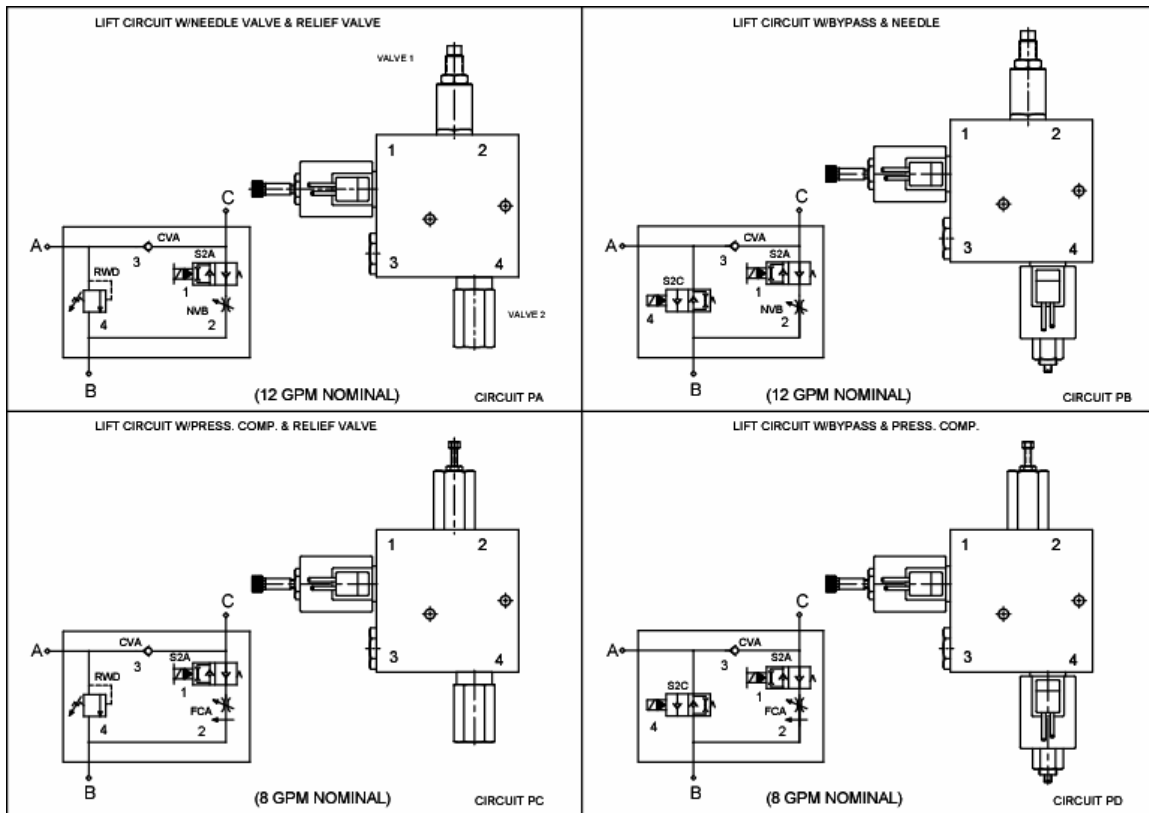
See options chart for specific operation (back).

VALVE SPECIFICATIONS

Nominal Flow	See Options Chart for Flow Range
Rated Operating Pressure	See Options Chart for Pres. Range
Viscosity Range	36 to 3000 SSU (3 to 647 cSt)
Filtration	30 micron nominal
Media Operating Temp. Range	-40° to 250°F (-40° to 120°C)
Operating Fluid Media	General Purpose Hydraulic Fluid
Cartridge Size	Delta Series 7/8-14 Thread
Cartridge Torque Requirements	30 ft-lbs (40.6 Nm)
Coil Torque Nut Requirements	4-6 ft-lbs (5.4-8.1 Nm)

DIMENSIONS


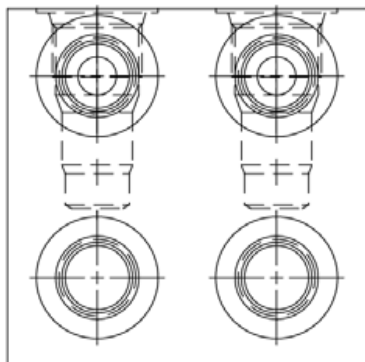
WARNING: the specifications/application data shown in our catalogs and data sheets are intended only as a general guide for the product described (herein). Any specific application should not be undertaken without independent study, evaluation, and testing for suitability.

OPTIONS CHART

ORDERING INFORMATION

Approximate Coil Weight: .74 lbs (.33 kg)

<u>CIRCUITS</u>		<u>OPTIONS</u>		<u>VOLTAGE</u>		<u>VALVE 2</u>		<u>VALVE 1</u>	
PA		Buna Standard	00	06	6 VDC	01	.5-1 GPM	01	.5-1 GPM
PB		Viton Standard	V0	12	12 VDC	02	1-2 GPM	02	1-2 GPM
PC		Manual Override	0M	24	24 VDC	04	2-4 GPM	04	2-4 GPM
PD				36	36 VDC	08	4-8 GPM	08	4-8 GPM
				48	48 VDC	FLOW CONTROL		FLOW CONTROL	
				25	25 VAC				
				11	120 VAC				
				22	220 VAC				
				44	440 VAC				
"D" COIL TERMINATION (All DC Except as Noted)				IMMERSION PROOF "D" TYPE		RELIEF VALVE		RELIEF VALVE	
DL	Double Lead	HC	DIN 43650 (Hirschmann) - (AC&DC)	IA		07	100-700 PSI	07	
DT	Deutsch on Leads DT04-2P	CL	Conduit Lead - (AC Only)	ID		30	100-3000 PSI	30	
ML	Metri-Pack on Leads	DI	Deutsch - Integral DT04-2P	IJ		40	3000-4000 PSI	40	
PL	Packard on Leads			IM					
WL	Weatherpack on Leads								
SS	Single Spade								
DS	Double Spade								

FOR SPECIAL PRESET VALUES ON VALVES, CONSULT FACTORY

PRE-ENGINEERED CIRCUIT, OPTION MODEL Q*
BASE BODY - 20200018 = #8 SAE

BODY WEIGHT: 1.50 lbs (.68 kg)
DESCRIPTION

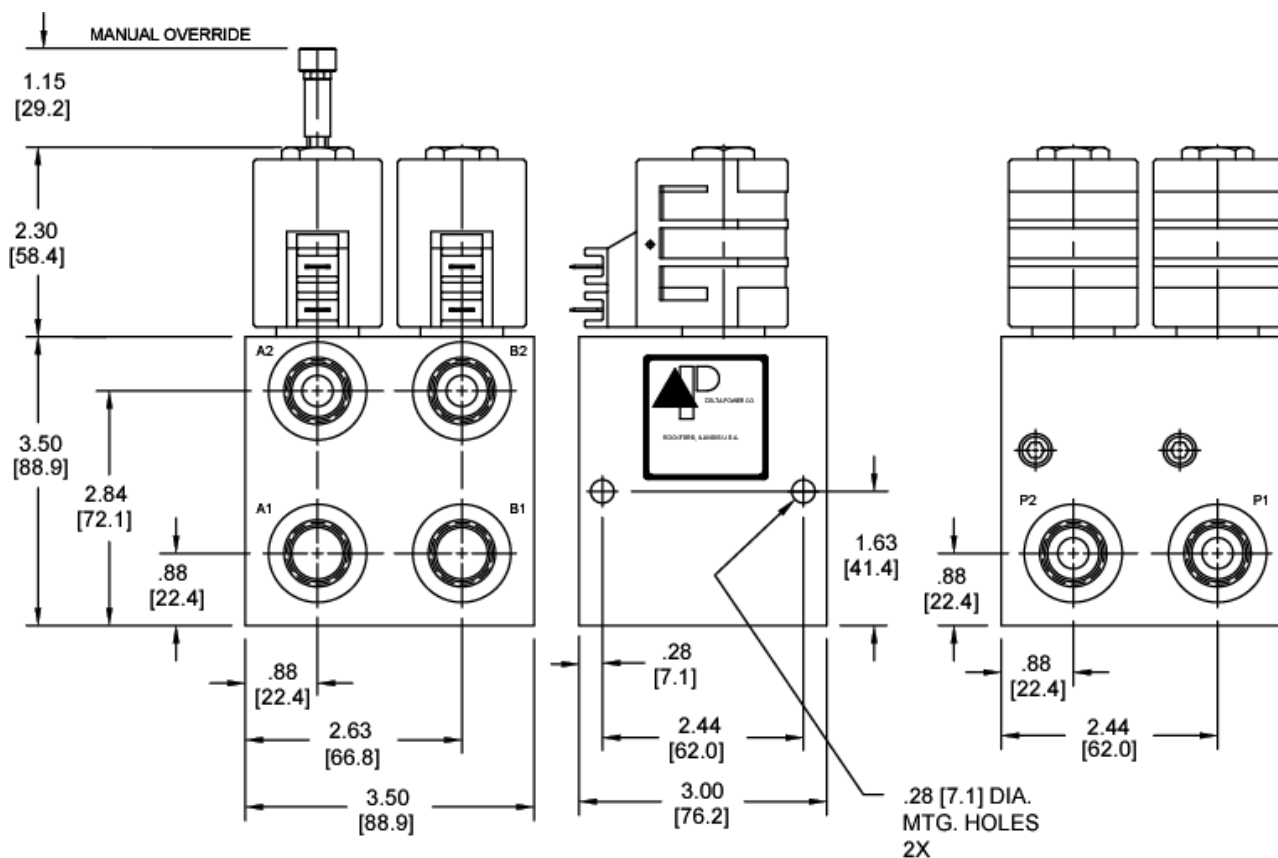
Pre-engineered circuit, option model Q*.

OPERATION

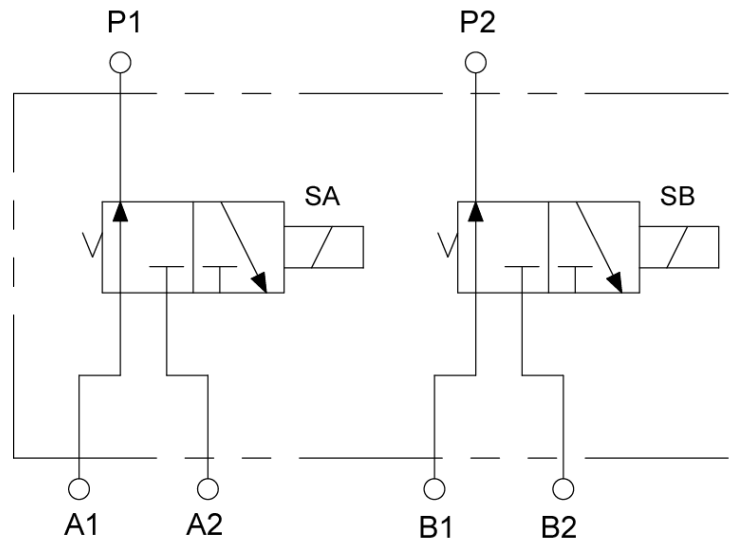
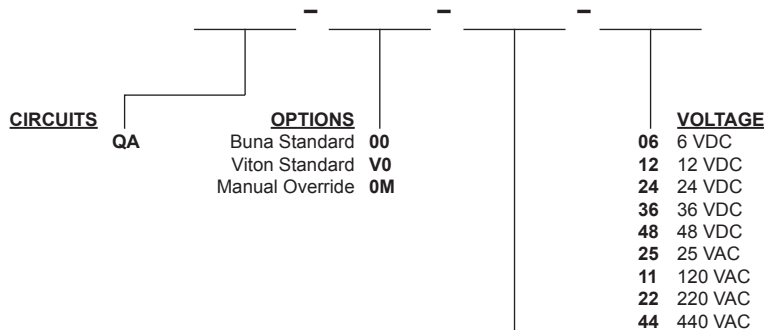
See options chart for specific operation.

VALVE SPECIFICATIONS

Nominal Flow	8 GPM (30 LPM)
Rated Operating Pressure	400-3500 PSI (28-241 bar)
Viscosity Range	36 to 3000 SSU (3 to 647 cSt)
Filtration	30 micron nominal
Media Operating Temp. Range	-40° to 250°F (-40° to 120°C)
Operating Fluid Media	General Purpose Hydraulic Fluid
Cartridge Size	Delta Series 7/8-14 Thread
Cartridge Torque Requirements	30 ft-lbs (40.6 Nm)
Coil Torque Nut Requirements	4-6 ft-lbs (5.4-8.1 Nm)

DIMENSIONS


WARNING: the specifications/application data shown in our catalogs and data sheets are intended only as a general guide for the product described (herein). Any specific application should not be undertaken without independent study, evaluation, and testing for suitability.

TYPICAL SCHEMATIC

CIRCUIT QA
ORDERING INFORMATION
Approximate Coil Weight: .74 lbs (.33 kg)

"D" COIL TERMINATION
(All DC Except as Noted)

DL Double Lead
DT Deutsch on Leads DT04-2P
ML Metri-Pack on Leads
PL Packard on Leads
WL Weatherpack on Leads

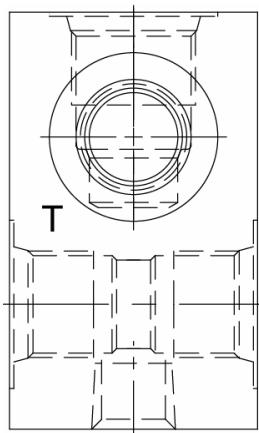
SS Single Spade
DS Double Spade
HC DIN 43650 (Hirschmann) - (AC&DC)
CL Conduit Lead - (AC Only)
DI Deutsch - Integral DT04-2P

IMMERSION PROOF "D" TYPE

IA "I" Coil AMP Superseal - Integral
ID "I" Coil Deutsch - Integral DT04-2P
IJ "I" Coil AMP Jr. Timer - Integral
IM "I" Coil Metri-Pack - Integral

W7 / 12-2022

WARNING: the specifications/application data shown in our catalogs and data sheets are intended only as a general guide for the product described (herein). Any specific application should not be undertaken without independent study, evaluation, and testing for suitability.

PRE-ENGINEERED CIRCUIT, OPTION MODEL R*
BASE BODY - 20200019 = #8 SAE

BODY WEIGHT: .66 lbs (.30 kg)
DESCRIPTION

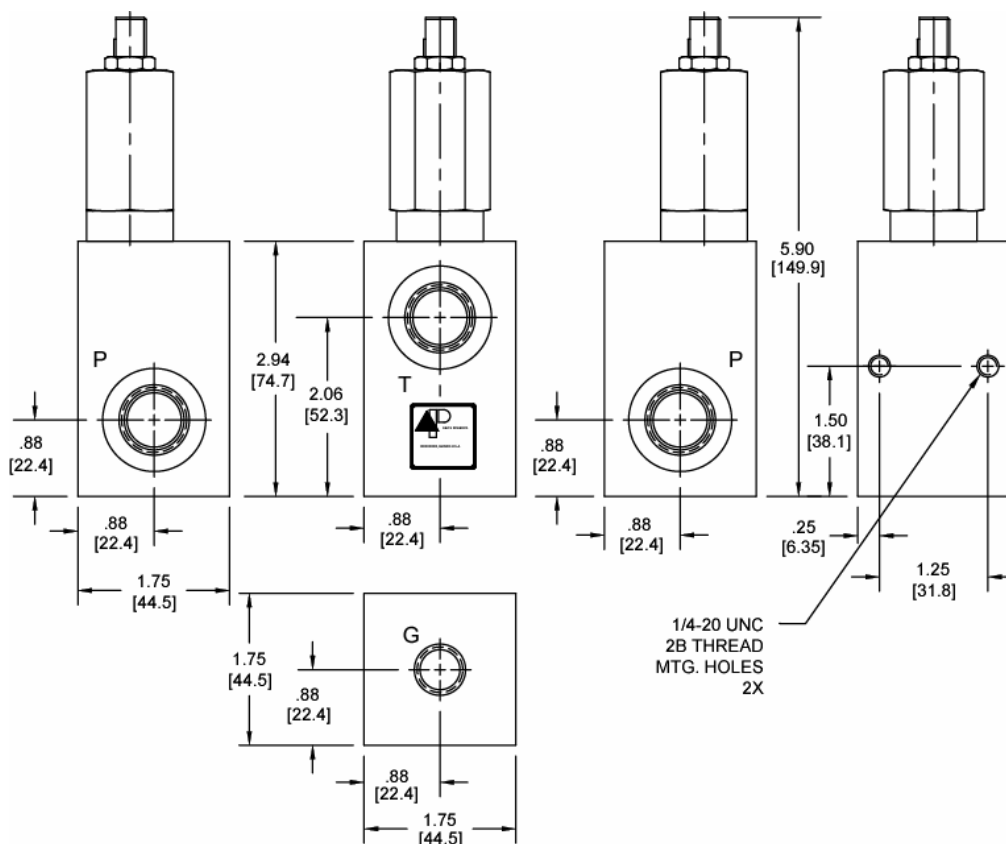
Pre-engineered circuit, option model R*.

OPERATION

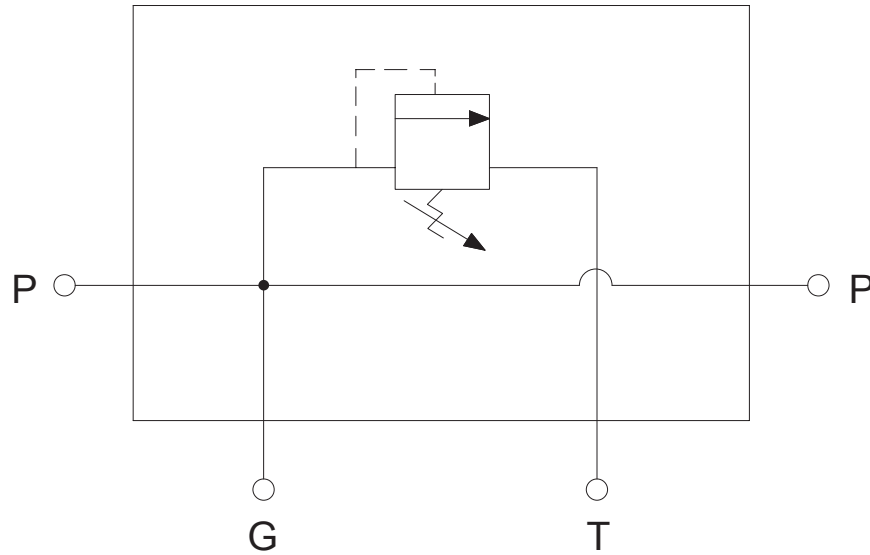
See typical schematic for specific operation.

VALVE SPECIFICATIONS

Nominal Flow	15 GPM (57 LPM)
Rated Operating Pressure	4000 PSI (276 bar)
Viscosity Range	36 to 3000 SSU (3 to 647 cSt)
Filtration	30 micron nominal
Media Operating Temp. Range	-40° to 250°F (-40° to 120°C)
Operating Fluid Media	General Purpose Hydraulic Fluid
Cartridge Size	Delta Series 7/8-14 Thread
Cartridge Torque Requirements	30 ft-lbs (40.6 Nm)

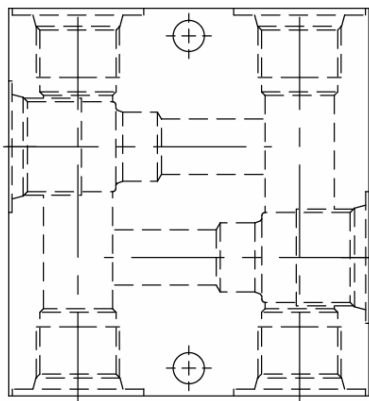
DIMENSIONS


WARNING: the specifications/application data shown in our catalogs and data sheets are intended only as a general guide for the product described (herein). Any specific application should not be undertaken without independent study, evaluation, and testing for suitability.

TYPICAL SCHEMATIC

CIRCUIT RA
ORDERING INFORMATION

CIRCUITS	OPTIONS	PRESSURE RANGE
RA	Buna Standard 00 Viton Standard V0	40 100-4000 PSI

FOR SPECIAL PRESET VALUES ON VALVES, CONSULT FACTORY

PRE-ENGINEERED CIRCUIT, OPTION MODEL S*
BASE BODY - 20200020 = #8 SAE

BODY WEIGHT: 1.2 lbs (.54 kg)
DESCRIPTION

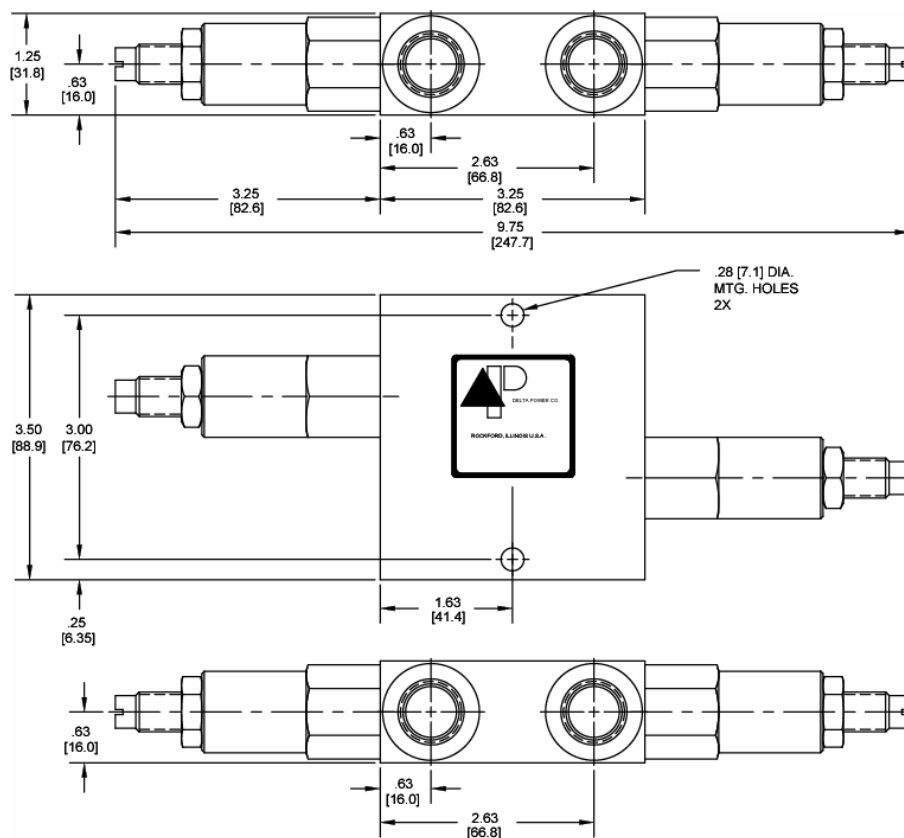
Pre-engineered circuit, option model S*.

OPERATION

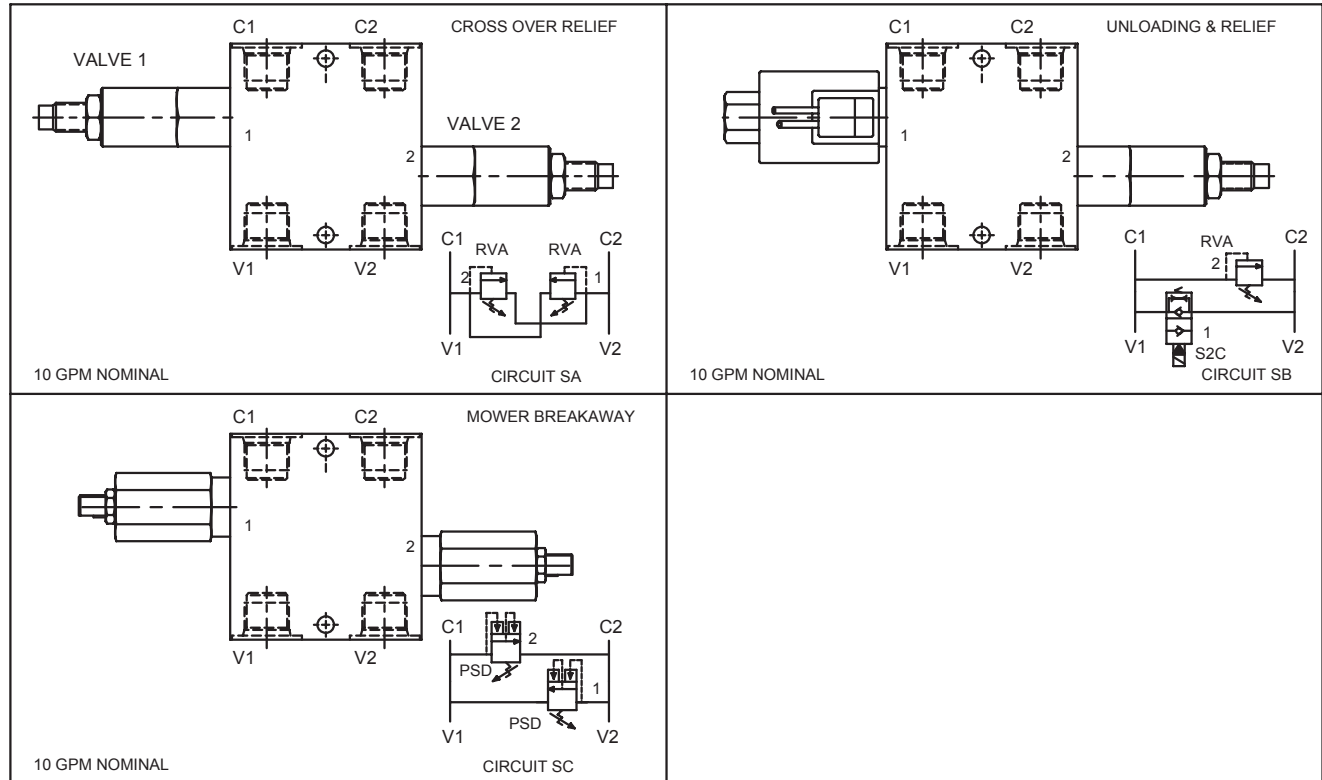
See options chart for specific operation.

VALVE SPECIFICATIONS

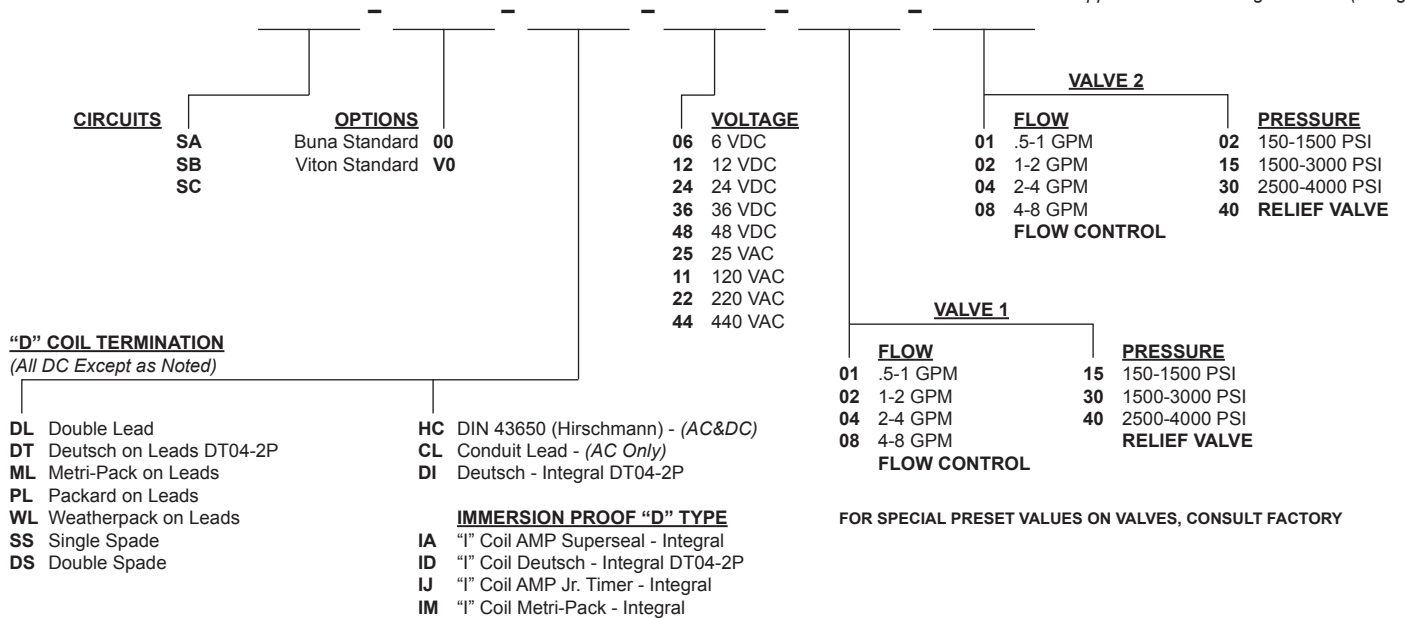
Nominal Flow	See Options Chart for Flow Range
Rated Operating Pressure	See Options Chart for Pres. Range
Viscosity Range	36 to 3000 SSU (3 to 647 cSt)
Filtration	30 micron nominal
Media Operating Temp. Range	-40° to 250°F (-40° to 120°C)
Operating Fluid Media	General Purpose Hydraulic Fluid
Cartridge Size	Delta Series 7/8-14 Thread
Cartridge Torque Requirements	30 ft-lbs (40.6 Nm)
Coil Torque Nut Requirements	6 ft-lbs (8.1 Nm)

DIMENSIONS


WARNING: the specifications/application data shown in our catalogs and data sheets are intended only as a general guide for the product described (herein). Any specific application should not be undertaken without independent study, evaluation, and testing for suitability.

OPTIONS CHART

ORDERING INFORMATION

Approximate Coil Weight: .74 lbs (.33 kg)



WARNING: the specifications/application data shown in our catalogs and data sheets are intended only as a general guide for the product described (herein). Any specific application should not be undertaken without independent study, evaluation, and testing for suitability.