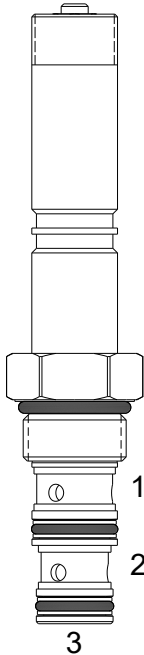


EPP-PDP 3 WAY 2 POSITION, PILOT OPERATED, PRESSURE REDUCING, RELIEVING VALVE

DESCRIPTION

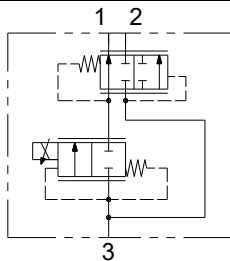
8 size, 3/4-16 thread, "Power" series, solenoid operated, normally closed, spool style, 3-way priority type pressure compensated proportional flow regulator. It can also be used as a restrictive-type 2-way, pressure compensated flow regulator when the bypass line (Port 2) is blocked.

OPERATION

EPP-FAP maintains a constant flow rate out of (1) regardless of load pressure variations in the circuit upstream of (3) and regardless of bypass pressure variations in the circuit downstream of (2). Excess flow bypasses out of (2). When coil is not energized, there is no regulated flow out of (1).

FEATURES

- Hardened parts for long life.
- Industry common cavity.
- Excellent linearity and low hysteresis characteristics.
- Cartridges are voltage interchangeable.
- Optional coil voltages and terminations available.
- Unitized, molded coil design.
- Continuous duty rated solenoid.

HYDRAULIC SYMBOL


It can be used as a restrictive 2-way pressure-compensated flow control valve, blocking bypass line port (2). See Regulated Flow vs Pressure (2 Way) below.

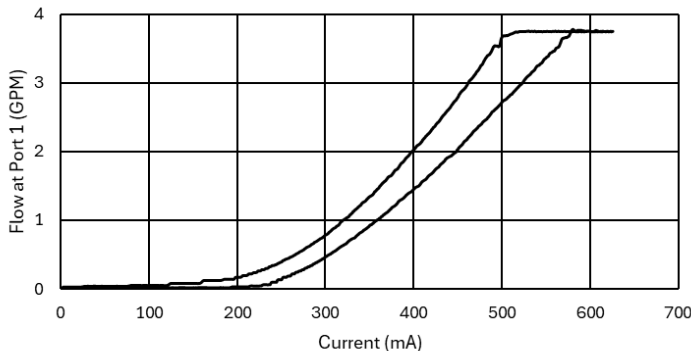


100-150 Hz PWM or 100-200 Hz Dither Frequency Recommended.

Consult Factory for other coil options (Note: "I" coil alters valve performance).

PERFORMANCE

Flow vs. Current


VALVE SPECIFICATIONS

Flow Range	3 GPM Maximum [11 LPM]
Max System Pressure	3500 PSI (241 bar)
Leakage	10 cu-in./min. @ 3000 PSI 160 cc/min. @ 207 bar
Hysteresis	±5%
Viscosity Range	36 to 3000 SSU (3 to 647 cSt)
Filtration	ISO 18/16/13
Media Operating Temperature Range	-22° to 212° F (-30° to 100° C)
Weight	0.39 lbs. (0.18 kg)
Operating Fluid Media	General Purpose Hydraulic Fluid
Cartridge Torque Requirements	25 ft-lbs (34 Nm)
Coil Nut Torque Requirements	4-6 ft-lbs (5.4-8.1 Nm)
Cavity	POWER 3W
Cavity Form Tool (Finishing)	40500024
Seal Kit	21191104

