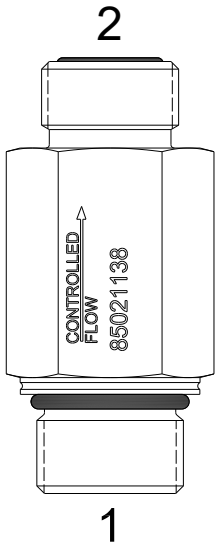


IM-CVF-1138 INLINE VELOCITY FUSE



DESCRIPTION

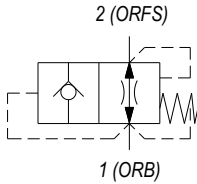
M22 ORB (1) and #8 ORFS (2) thread, inline velocity fuse.

OPERATION

The IM-CVF-1138 allows flow to pass between (1) and (2). When oil velocity from (1) to (2) exceeds the flow setting, the valve shifts and blocks flow from (1) to (2).

FEATURES

HYDRAULIC SYMBOL



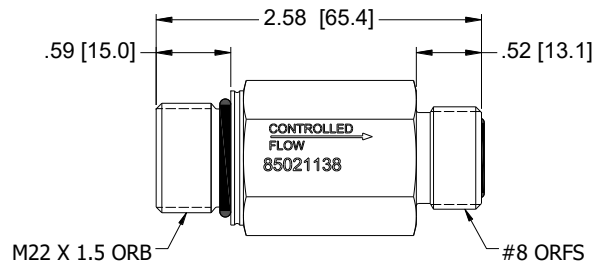
Improved accuracy over large temperature range. Other Flow values available if volumes justify.

PERFORMANCE

Consult factory for performance details.

VALVE SPECIFICATIONS

Fuse setting	30 LPM (7.9 GPM)
Rated Operating Pressure	207 BAR (3000 PSI)
Typical Internal Leakage (150 SSU)	0 to 5 drops/min.
Viscosity Range	36 to 3000 SSU (3 to 647 cSt)
Filtration	ISO 18/16/13
Media Operating Temperature Range	-40° to 250° F (-40° to 120° C)
Weight	0.18 lbs. (0.08 kg)
Operating Fluid Media	General Purpose Hydraulic Fluid



11/2025

WARNING: the specifications/application data shown in our catalogs and data sheets are intended only as a general guide for the product described (herein). Any specific application should not be undertaken without independent study, evaluation, and testing for suitability.