

SN-FMA Flow Mirror Amplifier

Overview

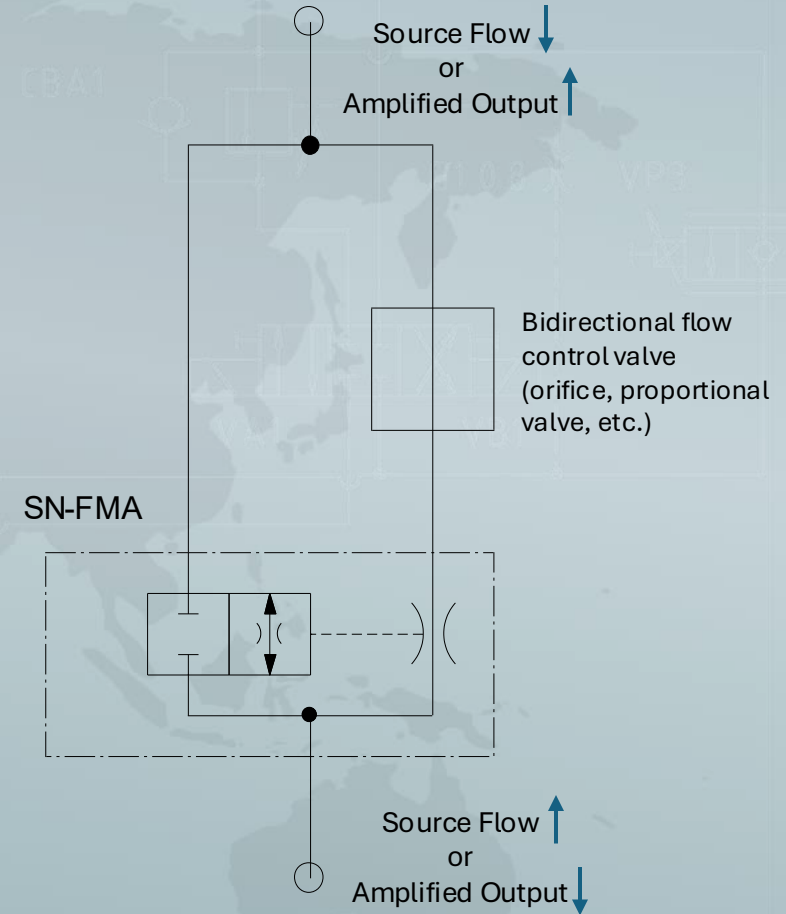
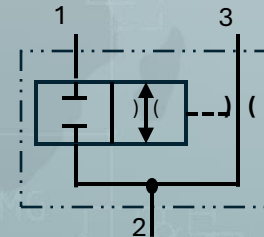
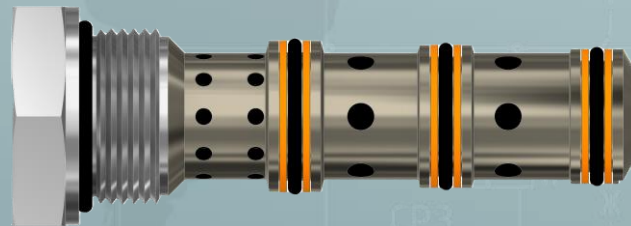
The Flow Mirror Amplifier (SN-FMA) is a hydraulic valve that functions as a **bidirectional** flow amplifier producing amplified flow proportional to sensed flow.

Features:

- Reduce circuit complexity by removing various control elements
- Flow amplification up to 6:1 ratio
- Configurable to adjust ratio or disable flow amplification in desired direction
- Bidirectional flow capability with pre and post compensation
- Amplified output flow up to 50 GPM

Potential uses:

- Proportional or synchronized actuation of multiple functions.
- Flow scaling for secondary circuits derived from a single priority control.
- Load-sharing or mirrored flow distribution in **bidirectional** circuits.



Contact Your Delta Power Specialist



David Yale

Sales Engineer – Delta Power

“Let’s discuss how the SN-FMA valve can optimize your system. Contact me to get started on a technical consultation.”

 dyale@delta-power.com

 +1 (919) -665-9921