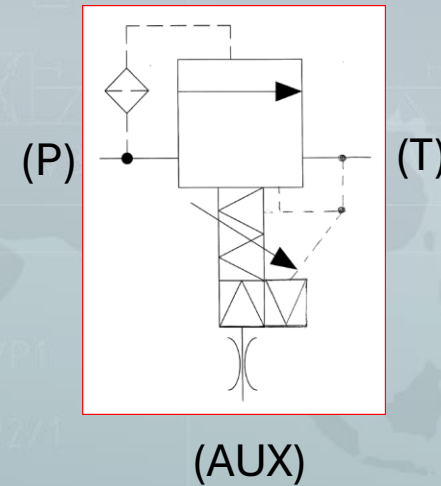


# SN026-RV Dual Pressure Relief Valve with External Pilot

- Functions as pilot-operated relief valve with the External (AUX) pilot port in the vented condition.
- The External (AUX) pilot port allows the pressure setting to be increased by 1000 psi by applying a remote pressure signal.
  - External (AUX) Pilot port vented = mechanical spring setting condition.
  - External (AUX) Pilot port pressurized = Increased high-pressure condition

## Typical Applications:

- Hydraulic power units
- Systems requiring dual-levels of a Relief Valve Setting



## SN026-RV Key Characteristics:

Dual Pressure relief valve provides two levels of precise pressure control and high flow capacity.

Stable operation across a wide flow range due to two-stage design.

High flow capacity with low pressure rise.

- External pilot enables a secondary control pressure without the need for a mechanical adjustment.
- Typical ports:
  - Port 1 (P): Inlet/pressure line
  - Port 2 (T): Tank/drain
  - Port 3 (AUX): External pilot port

Relief Valve Pressure setting Relationship and Return Line Influence

- Return line (tank) pressure directly effects the valve setting and the Pilot Pressure necessary to shift to second setting.
- Pilot Pressure required to increase pressure setting needs to be more than spring setting

# Contact Your Delta Power Specialist




David Yale

Sales Engineer – Delta Power

“Let’s discuss how this RV can optimize your system. Contact me to get started on a technical consultation.”

 [dyale@delta-power.com](mailto:dyale@delta-power.com)

 +1 (919) -665-9921