

EDG-PRZ 3 WAY, PROPORTIONAL PRESSURE REDUCING CONTROL VALVE
DESCRIPTION

10 size, 7/8-14 thread, "Delta" series, solenoid operated, proportional pressure reducing control valve

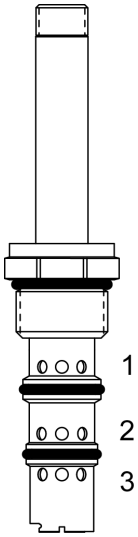
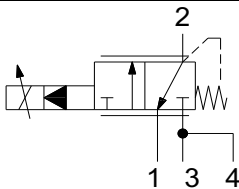
OPERATION

When de-energized the EDG-PRZ allows flow from (2) to (1) and blocks flow at (3).

When energized, the cartridge's spool lifts to open (3) to (2) and blocks flow at (1). Outlet pressure is proportional to current applied to the coil.

FEATURES

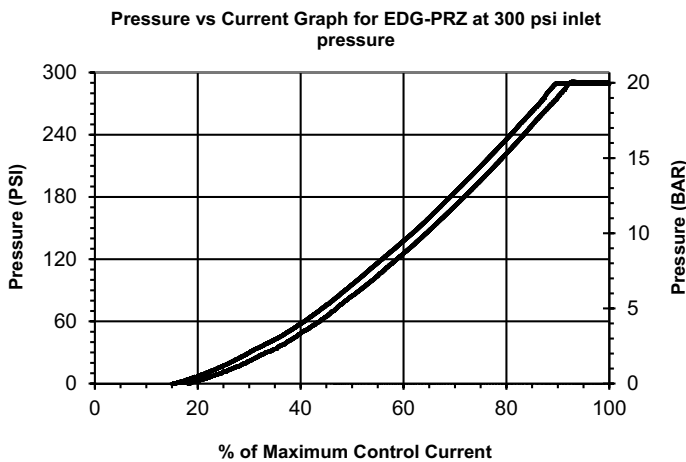
- Efficient wet-armature construction.
- Cartridges are voltage interchangeable.
- Industry common cavity.
- Unitized, molded coil design.
- Continuous duty rated solenoid.
- Optional coil voltages and terminations.


HYDRAULIC SYMBOL


Note: Low Wattage coils are available. Consult Factory

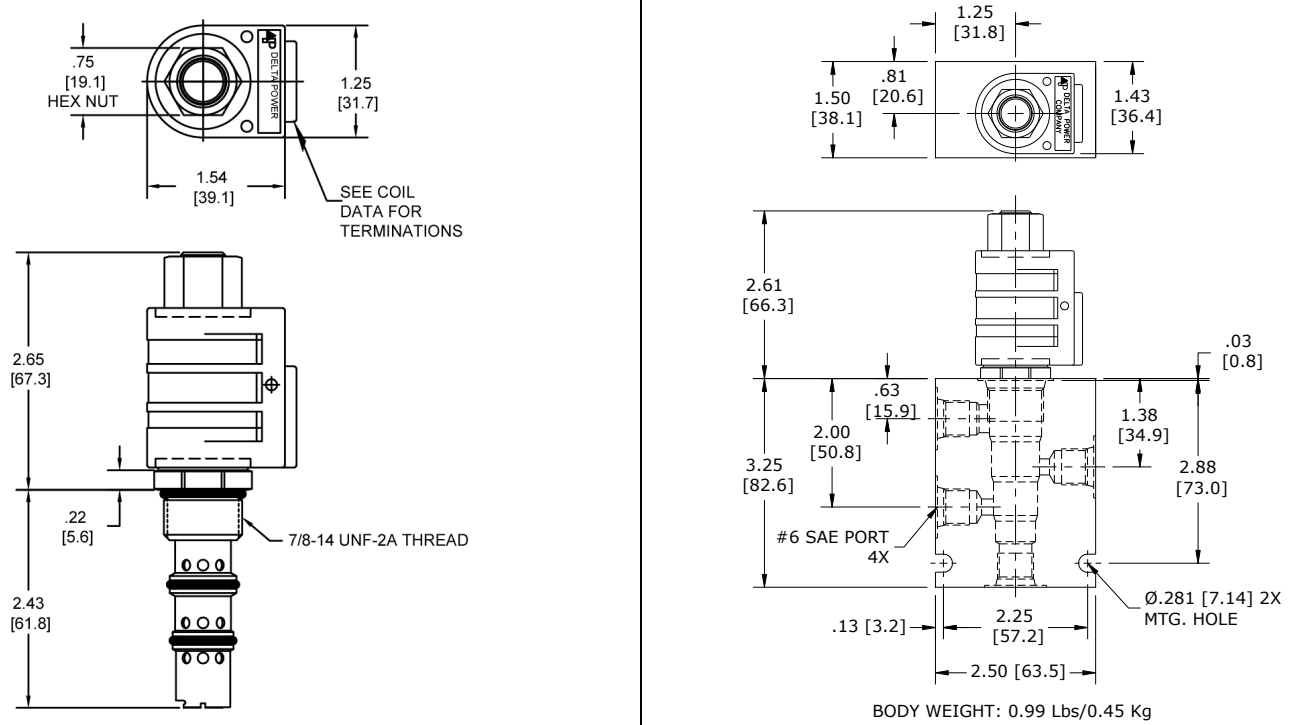
PERFORMANCE

Actual Test Data (Cartridge Only)

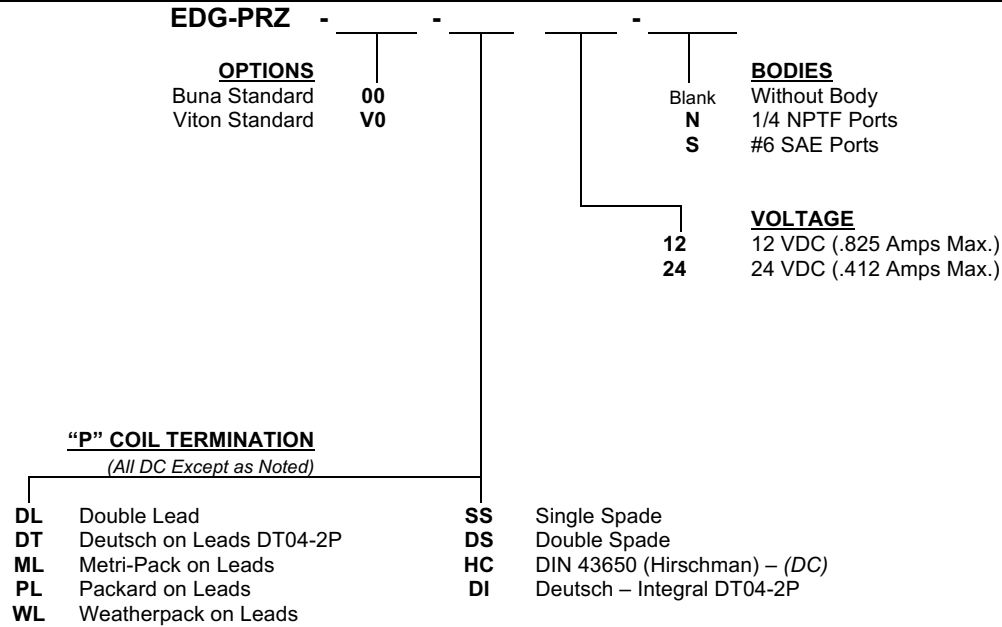

VALVE SPECIFICATIONS

Nominal Flow	8 GPM (30 LPM)
Max System Pressure	450 PSI (31 bar)
Viscosity Range	36 to 3000 SSU (3 to 647 cSt)
Filtration	ISO 18/16/13
Media Operating Temperature Range	-40° to 250° F (-40° to 120° C)
Weight	0.38 lbs. (0.17 kg)
Operating Fluid Media	General Purpose Hydraulic Fluid
Cartridge Torque Requirements	12 ft-lbs (16.3 Nm)
Coil Nut Torque Requirements	4 - 6 ft-lbs (5.4 - 8.1 Nm)
Cavity	DELTA 4W
Cavity Form Tool (Finishing)	40500002
Seal Kit	21191204

DIMENSIONS



ORDERING INFORMATION



Approximate Coil Weight: .42 lbs. (.19 kg.)

WARNING: the specifications/application data shown in our catalogs and data sheets are intended only as a general guide for the product described (herein). Any specific application should not be undertaken without independent study, evaluation, and testing for suitability.