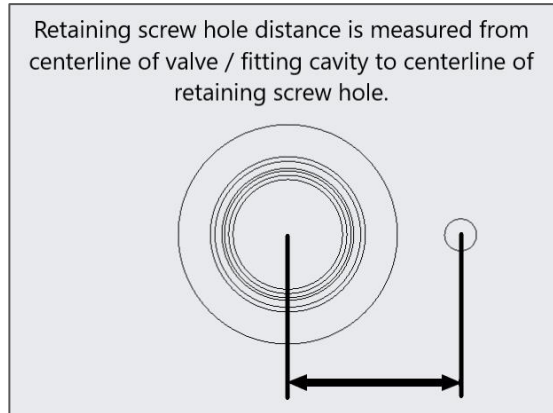
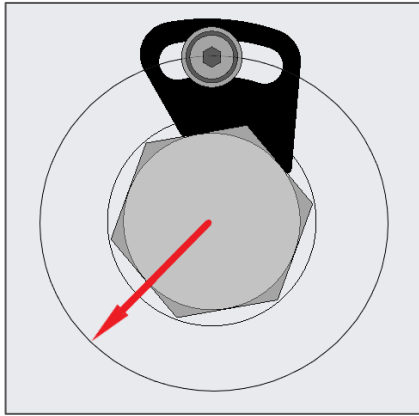


## Delta Loc® – Retaining Screw “Hole Location” Chart

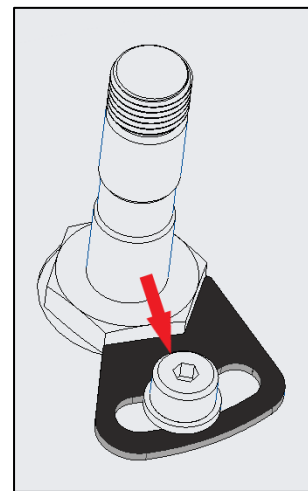
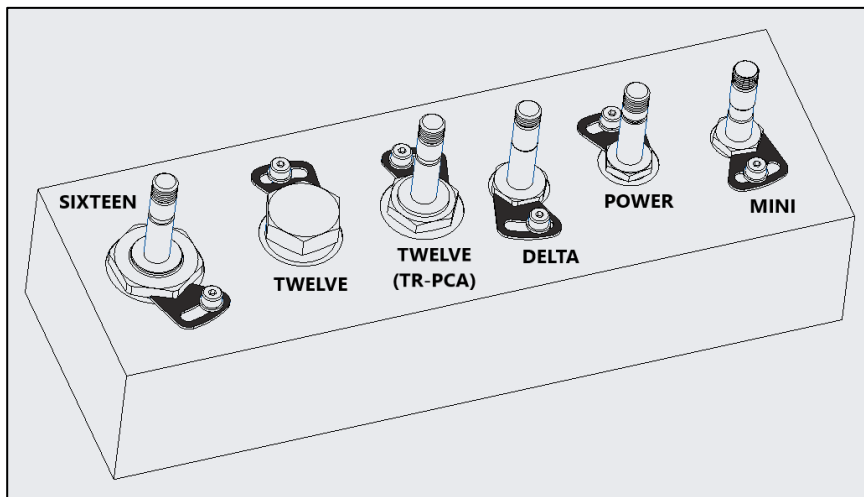
- The Delta Power Delta Loc® is designed and sized to provide retention (if needed) for all size valves & fittings.  
Delta Loc® & plate dimensions shown assume M6 x 1 fastener.
- The Delta Loc® can be used with standard and non-standard manifolds.
- A tapped hole at a specified distance can be placed in any position 360 degrees around a valve or fitting as illustrated in left image below. The Delta Loc® is retained with a single screw along with a couple lock washers.



- The charts below provide the hole distance required to retain the Delta Loc® on valves & fittings of various sizes & styles.

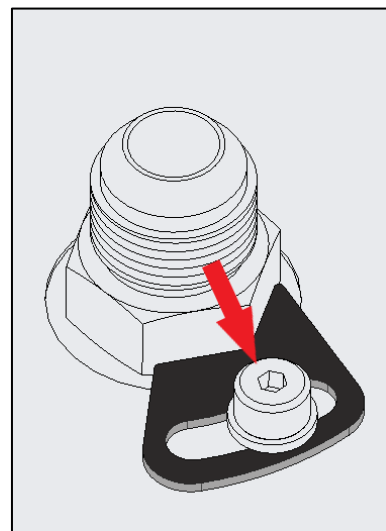
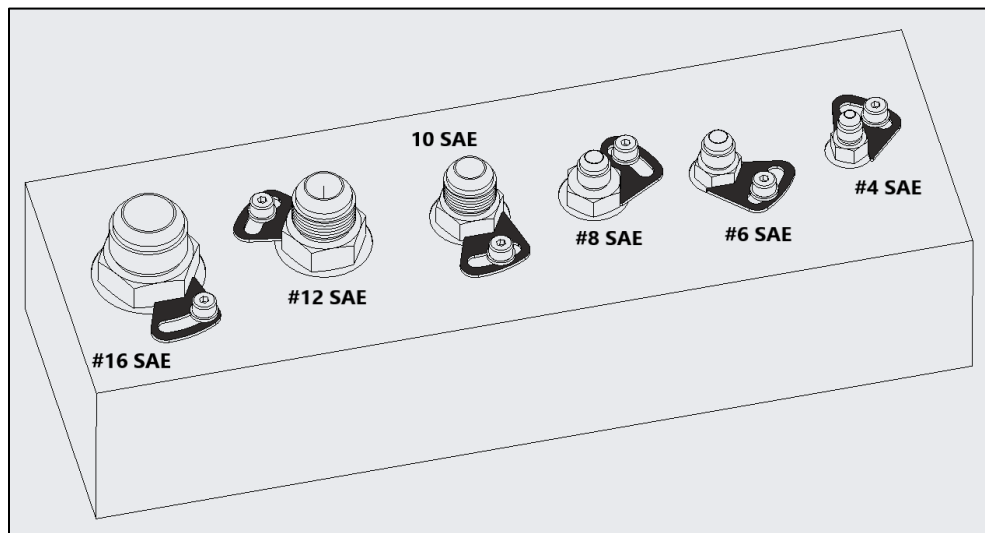
---

### Delta Loc® hole locations when used with “standard” Delta Power Valves



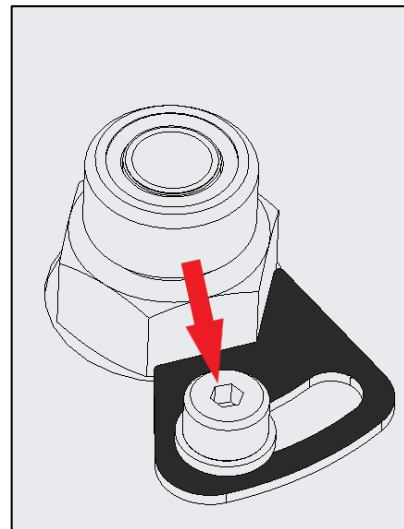
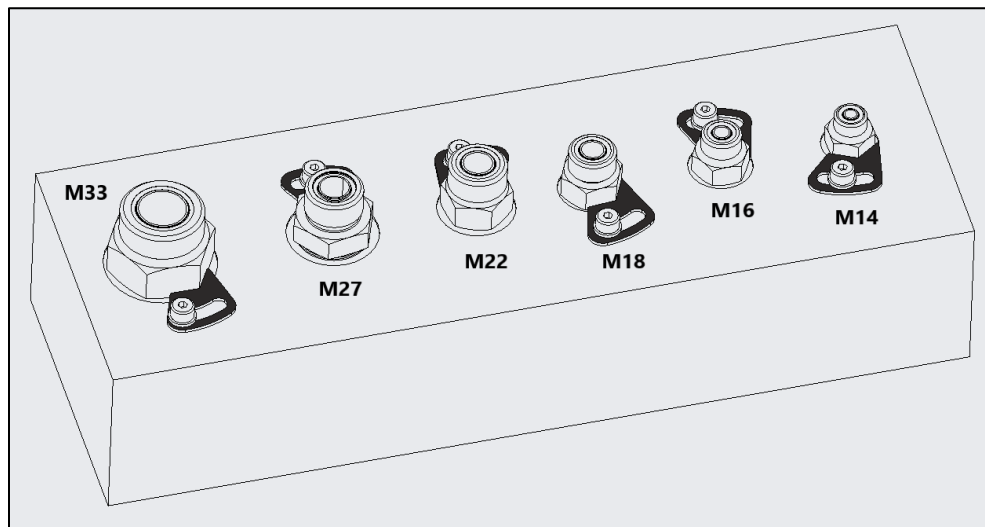
Delta Valve Size	Hex size	Hole distance from centerline of valve cavity
Mini	7/8" Hex	1.010" (25.6mm)
Power	7/8" Hex	1.010" (25.6mm)
Delta	1" Hex	1.080" (27.4mm)
Twelve	1¼" Hex	1.210" (30.7mm)
Twelve (TR-PCA)	1⅜" Hex	1.280" (32.5mm)
Sixteen	1⅝" Hex	1.410" (35.8mm)

## Delta Loc® hole locations when used with SAE-ORB 37 deg flare fittings



SAE port Size	Hex size	Hole distance from centerline of fitting cavity
#4 SAE	9/16" Hex	0.830" (20.7mm)
#6 SAE	11/16" Hex	0.895" (22.7mm)
#8 SAE	7/8" Hex	1.010" (25.6mm)
#10 SAE	1" Hex	1.080" (27.4mm)
#12 SAE	1 ¼" Hex	1.210" (30.7mm)
#16 SAE	1 ½" Hex	1.340" (34.0mm)

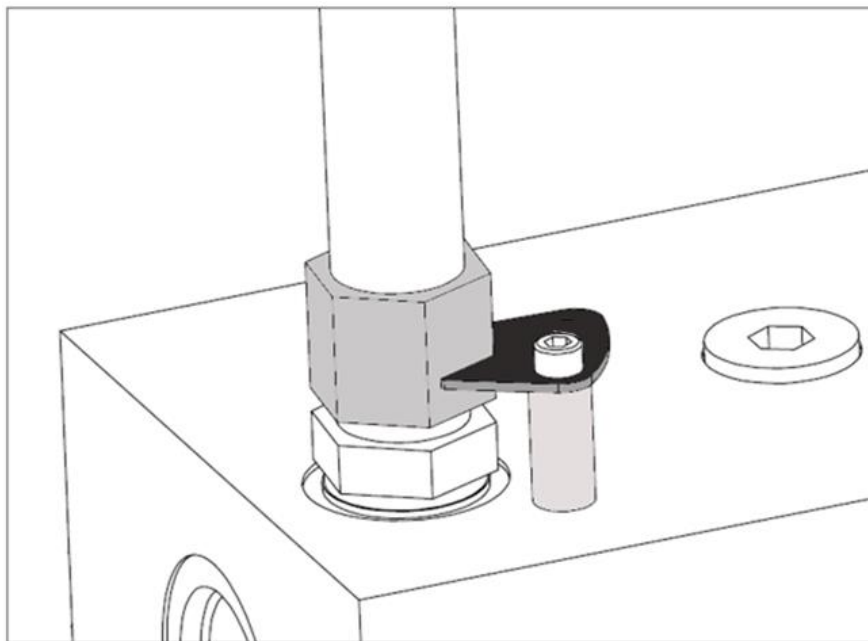
## Delta Loc® hole locations when used with ISO 6149 Metric ORFS fittings



Metric port Size	Hex size	Hole distance from centerline of fitting cavity
M14	19mm Hex	0.935" (23.7mm)
M16	22mm Hex	1.000" (25.4mm)
M18	24mm Hex	1.040" (26.4mm)
M22	27mm Hex	1.095" (27.8mm)
M27	32mm Hex	1.210" (30.7mm)
M33	41mm Hex	1.400" (35.6mm)

**UNIVERSAL HEXLOCK**

**A lifter inserted beneath a Delta Loc® (as shown below)  
allows it to engage the hexagon of a tube end or hose end fitting.**



- The Delta Loc® is designed and sized to provide retention (if needed) for all size valves & fittings.
- A tapped hole in the manifold allows the Hexlock to be retained in position with a single screw.
- The Delta Loc® is designed for use with standard and non-standard manifolds.
- For some inline manifolds, the Delta Loc® may extend beyond the surface of the block.