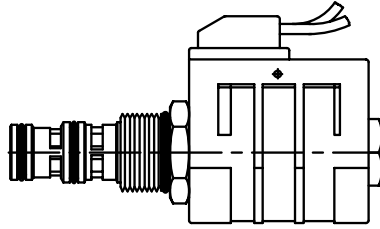


**GENERAL CARTRIDGE VALVE INSTALLATION NOTES**

**CARTRIDGES**

Inspect the cartridge to assure there is no external contaminant present.

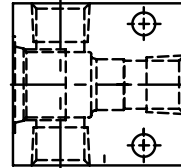
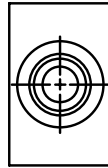
Check O-rings and back-up rings to assure they are intact and in the correct position. The O-rings should always be toward the high pressure port or between doubled back-up rings on bi-directional applications.

**COILS**

It is sometimes easier to remove the coil from the cartridge valve to install terminations or make connections with conduit, etc. If this is the case, reinstall the coil by tightening the coil nut to 4-6 ft lbs per spec sheet.

**CAUTION: DO NOT OVER TORQUE**

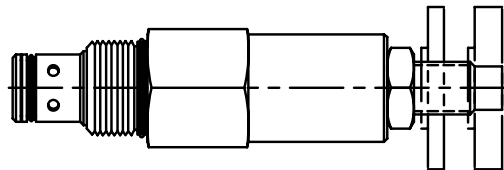
Tube will be stretched and damaged, causing valve to fail.


**VALVE BODIES**

Check the cartridge brochure to assure correct plumbing. Inspect the cavity for burrs and any irregular machining which would damage O-rings at assembly. Shims may be required behind the block for panel mounting.

**ASSEMBLY**

Dip the cartridge in clean oil before installing. Screw the cartridge in by hand until the top O-ring is touching the manifold, then wrench tighten to the proper torque specification given below.


**TORQUE SPECIFICATIONS**

Final Cartridge Tightening:

Series	Torque
5/8 MINI	10-15 ft-lbs
3/4 POWER	20-25 ft-lbs
7/8 DELTA	25-30 ft-lbs
1 1/16 TWELVE	60-70 ft-lbs
1 5/16 SIXTEEN	80-90 ft-lbs

Adjusting Holding Parts:

Part	Torque
Nut	3-5 ft-lbs
Knob	3-5 ft-lbs
Cap	2-3 ft-lbs