

**STANDARD "T" TYPE COILS**
**DESCRIPTION**

Standard coil data T-Type 3/4-inch (19.2mm) I.D.

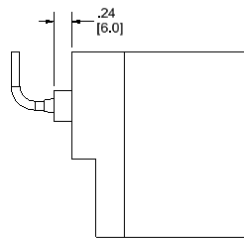
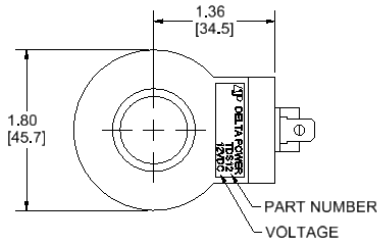
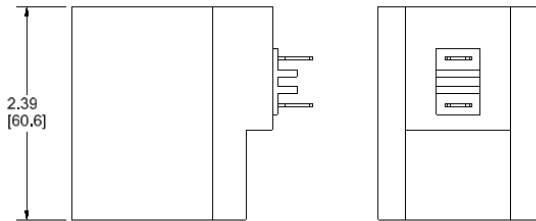
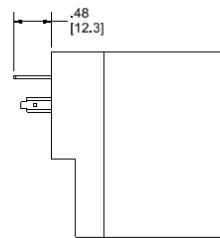
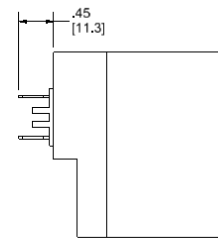
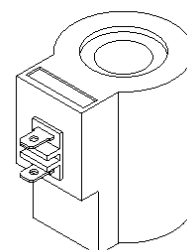
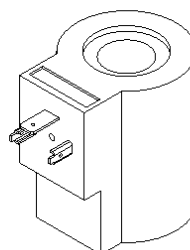
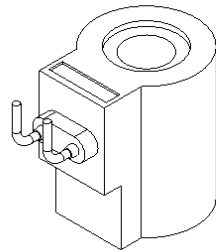
**FEATURES**

- One-piece water resistant encapsulated design.
- Numerous terminals and voltages.
- Heavy gauge color-coded lead wires (see chart on sheet 2).
- Lead wires: 18 gauge, 24" long, 125°C, 600V rating w/strain relief.

Note: For coil selection in extreme conditions, please look at our "I" coil line of environmental coils.

**COIL SPECIFICATIONS**

Wattage	28 Watts Nominal
Duty Rating	Continuous Duty $\pm 10\%$ rated voltage at 120° F (49° C) ambient
Min. Current for Actuation	80% of rated current at room temp.
Magnet Wire Class	H or Better for all voltages
Temperature Range	-40° to 392° F (-40° to 200° C)
Encapsulation Material	Glass filled polyester, resistant to moisture, caustic solutions, fungus, and vibrations


**TDL**

**THC**

**TDS**

**ORDERING INFORMATION**

T - - -

Approximate Coil Weight: 0.90 Lbs. (0.41 kg)

**TERMINATIONS**

Dual Lead  
 Dual Spade  
 DIN 43650 (Hirschmann) – (AC/DC)  
 Deutsch on Leads DT04-2P  
 Metri-Pack on Leads (12162000)  
 Packard on Leads (150 Series)  
 Weatherpack on Leads (12010972)

**DL** 06 – 6VDC  
**DS** 12 – 12VDC  
**HC** 24 – 24VDC  
**DT** 36 – 36VDC  
**ML** 48 – 48VDC  
**PL** 25 – 24VAC  
**WL** 11 – 115VAC  
**22** – 220VAC

**NOTE:** Delta Power AC Coils incorporate integrally molded full wave rectifiers which are rated for reverse voltage peaks of 1000 volts maximum.  
 AC Coils are rated 50/60 Hz.

**STANDARD "T" TYPE COILS**
**COIL MODEL NUMBERS:**

Termination	LDL	LDS	LHC		
Description	Double Lead	Double Spade	Hirschmann Connector	Lead Wire Color	AC Voltage Range
Voltage	12VDC	12VDC	12VDC	BLACK	
Amps	2.33 Amps	2.33 Amps	2.33 Amps		
Voltage	24VDC	24VDC	24VDC	RED	
Amps	1.17 Amps	1.17 Amps	1.17 Amps		
Voltage	36VDC	36VDC	36VDC	BLUE	
Amps	.78 Amps	.78 Amps	.78 Amps		
Voltage	48VDC	48VDC	48VDC	GREEN	
Amps	.58 Amps	.58 Amps	.58 Amps		
Voltage			25VAC	RED/ BLUE	25VAC
Amps			1.75 Amps		
Voltage					
Amps					
Voltage			120VAC	RED/ BLUE	115VAC 130VAC
Amps			.31 Amps		
Voltage					
Amps					
Voltage			240VAC	RED/ BLUE	225VAC 260VAC
Amps			.15 Amps		
Voltage					
Amps					

*Data in this chart reflects current usage. Additional terminations, connections and suppression devices are available. Consult the factory for Special Applications*

**WARNING:** the specifications/application data shown in our catalogs and data sheets are intended only as a general guide for the product described (herein). Any specific application should not be undertaken without independent study, evaluation, and testing for suitability.