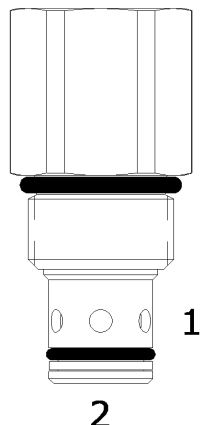


DE-CVT DIRECT ACTING CHECK VALVE THERMAL RELIEF, POPPET

DESCRIPTION

10 size, 7/8-14 thread, "Delta" series, direct acting check valve with thermal relief.

OPERATION

The DE-CVT allows free flow passage from (2) to (1), and blocks flow from (1) to (2). If the pressure at (1) exceeds the thermal relief valve setting, a small amount of oil will be allowed to pass from (1) to (2), preventing cylinder damage from excessive pressure. The cartridge has a fully guided poppet, which is spring biased closed until sufficient pressure is applied at (2) to open to (1).

Note: the relief valve feature is not intended for use in dynamic pressure limiting applications. Consult factory.

FEATURES

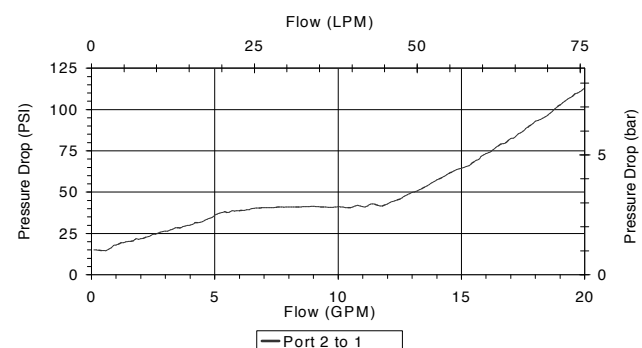
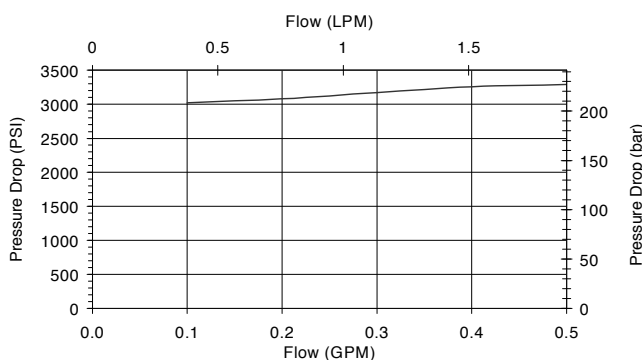
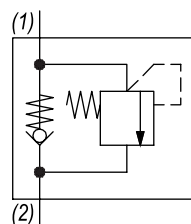
- Hardened parts for long life.
- Optional bias springs for backpressure application flexibility.
- Fully guided poppet assembly.
- Industry common cavity.



Nominal flow rating is 15 GPM for free flow port (2) to (1). Consult chart for free flow differential pressure. Thermal relief is cyclic rated to 0.1 GPM. Port (1) to (2) chart demonstrates override characteristics for a typical thermal relief application.

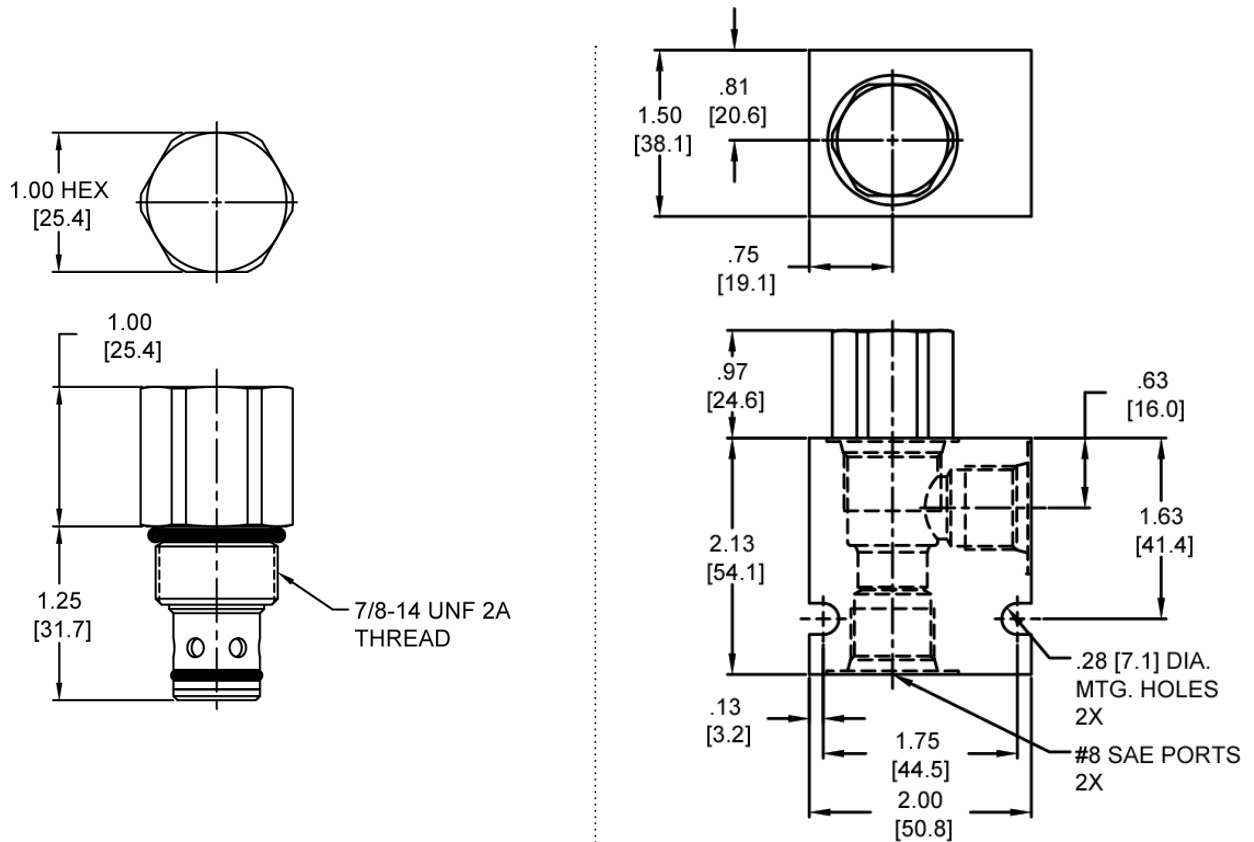
PERFORMANCE

Actual Test Data (Cartridge Only)


HYDRAULIC SYMBOL

VALVE SPECIFICATIONS

Nominal Flow	15 GPM (57 LPM)
Rated Operating Pressure	4000 PSI (276 bar)
Typical Internal Leakage (150 SSU)	0-10 drops/min
Viscosity Range	36 to 3000 SSU (3 to 647 cSt)
Filtration	ISO 18/16/13
Media Operating Temp. Range	-40° to 250°F (-40° to 120°C)
Weight	.31 lbs (.14 kg)
Operating Fluid Media	General Purpose Hydraulic Fluid
Cartridge Torque Requirements	30 ft-lbs (40.6 Nm)
Cavity	DELTA 2W
Cavity Form Tool (Finishing)	40500000
Seal Kit	21191200

WARNING: the specifications/application data shown in our catalogs and data sheets are intended only as a general guide for the product described (herein). Any specific application should not be undertaken without independent study, evaluation, and testing for suitability.

DIMENSIONS


Body Weight: .47 lbs (.21 kg)

ORDERING INFORMATION

DE-CVT - - - -			
OPTIONS		BODIES	
Buna Standard	00	Blank	Without Body
Viton Standard	V0	N	3/8" NPTF Ports
		S	#8 SAE Ports
PRESSURE SETTING		CRACK PRESSURE	
	1000 PSI 1	0020	20 PSI
	2000 PSI 2	0100	100 PSI
	3000 PSI 3		± 10%
	4000 PSI 4		

WARNING
DO NOT USE ALUMINUM BODY
HIGH PRESSURE (4000 PSI) PRODUCT

WARNING: the specifications/application data shown in our catalogs and data sheets are intended only as a general guide for the product described (herein). Any specific application should not be undertaken without independent study, evaluation, and testing for suitability.