

DE-M2G MANUAL ROTARY SPOOL VALVE, 2 WAY NORMALLY CLOSED
DESCRIPTION

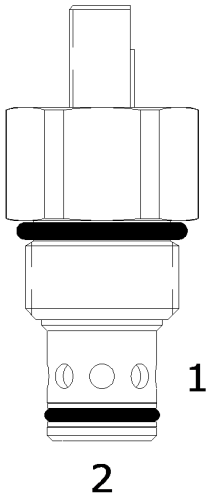
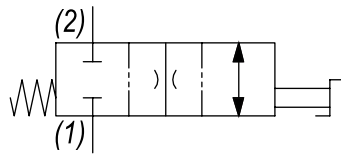
10 size, 7/8-14 thread, "Delta" series, manual rotary spool valve, 2 way normally closed.

OPERATION

The DE-M2G when rotated clockwise (fully closed position) blocks flow from (1) to (2) and (2) to (1). When rotated counterclockwise (fully open position), the cartridge allows flow from (1) to (2) and (2) to (1).

FEATURES

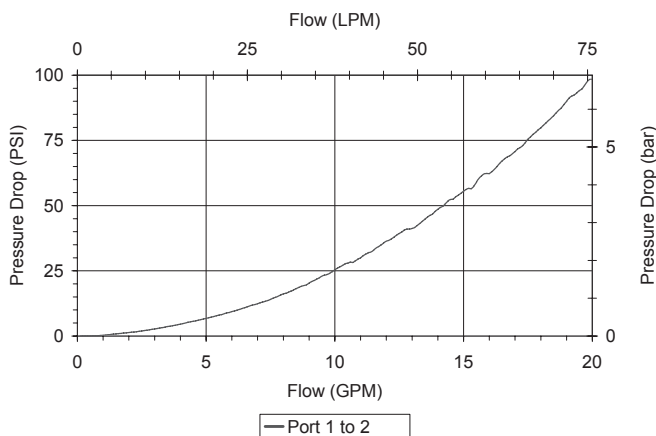
- Hardened parts for long life.
- Industry common cavity.


HYDRAULIC SYMBOL


May be used as a metering product. Valve has approximately 3.5 turns of adjustment from fully open to fully closed. See Chart for fully open pressure drop.

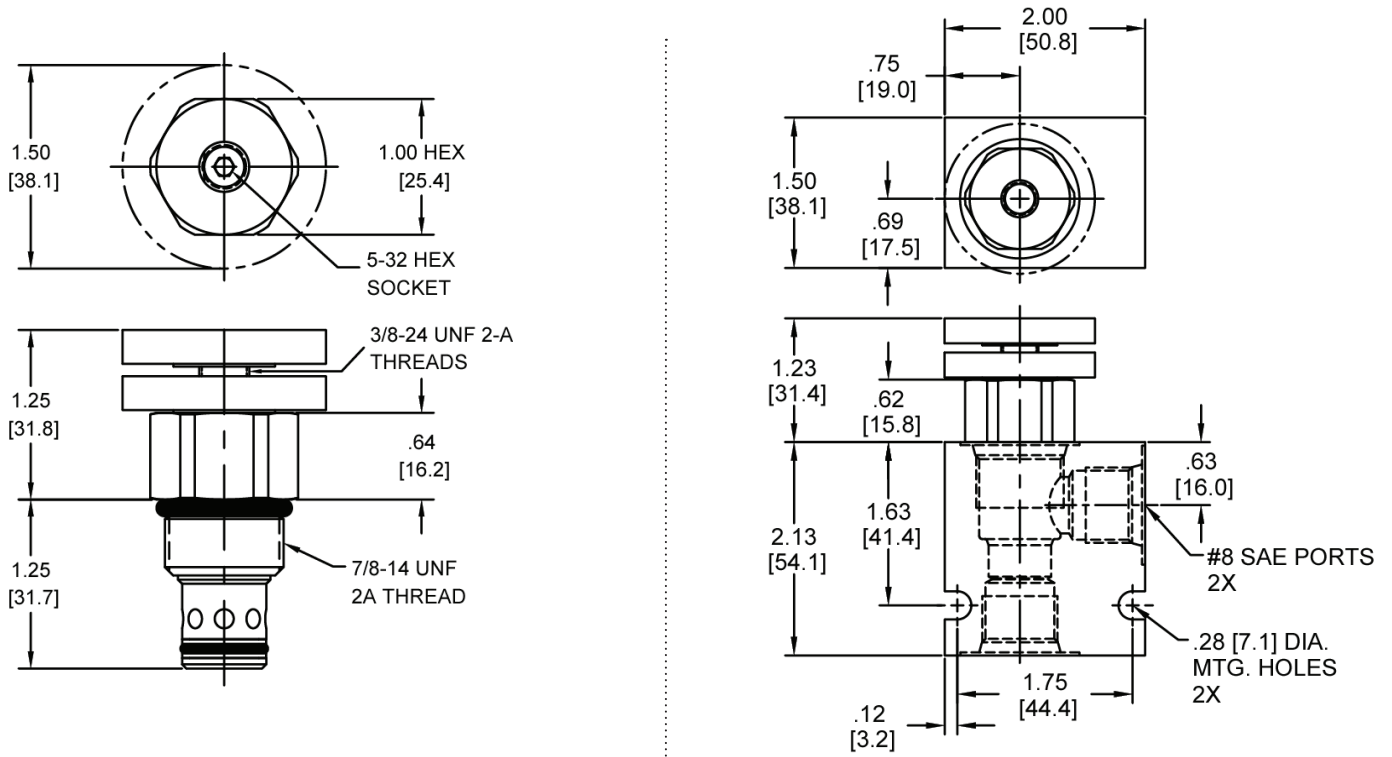
PERFORMANCE

Actual Test Data (Cartridge Only)


VALVE SPECIFICATIONS

Nominal Flow	20 GPM (76 LPM)
Rated Operating Pressure	3000 PSI (207 bar)
Typical Internal Leakage (150 SSU)	5 cu/in per min (82 ml/min)
Viscosity Range	36 to 3000 SSU (3 to 647 cSt)
Filtration	ISO 18/16/13
Media Operating Temp. Range	-40° to 250°F (-40° to 120°C)
Weight	.27 lbs (.12 kg)
Operating Fluid Media	General Purpose Hydraulic Fluid
Cartridge Torque Requirements	30 ft-lbs (40.6 Nm)
Cavity	DELTA 2W
Cavity Form Tool (Finishing)	40500000
Seal Kit	21191202

DIMENSIONS



Body Weight: .47 lbs (.21 kg)

ORDERING INFORMATION

DE-M2G		-	-
	OPTIONS		BODIES
Buna Standard	00		Blank Without Body
Viton Standard	V0		N 3/8" NPTF Ports
Buna, Screen	A0		S #8 SAE Ports
Viton, Screen	W0		
Buna, Knob	0K		
Viton, Knob	VK		
Buna, Knob, Screen	AK		
Viton, Knob, Screen	WK		

Note: use screen only if flow direction is from (1) to (2).

WARNING: the specifications/application data shown in our catalogs and data sheets are intended only as a general guide for the product described (herein). Any specific application should not be undertaken without independent study, evaluation, and testing for suitability.