

DE-MCS MANUAL POPPET VALVE, 2 WAY NORMALLY CLOSED, PULL TYPE, CORROSION RESISTANT
DESCRIPTION

10 size, 7/8-14 thread, "Delta" series, manual poppet valve, 2 way normally closed, pull type, corrosion resistant.

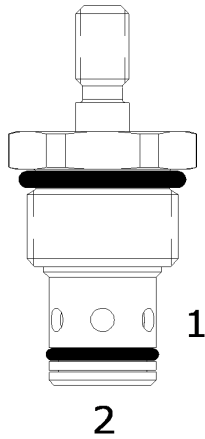
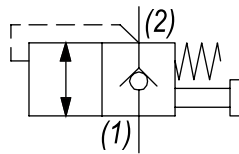
OPERATION

The DE-MCS blocks flow from (1) to (2) until an operator pulls the shaft outward. The bias spring allows for backpressure at (2) before the valve will open (see option page for pressure).

Note: pressure at port (2) will directly act on the spool and spring. Port (2) is intended to be a tank port only.

FEATURES

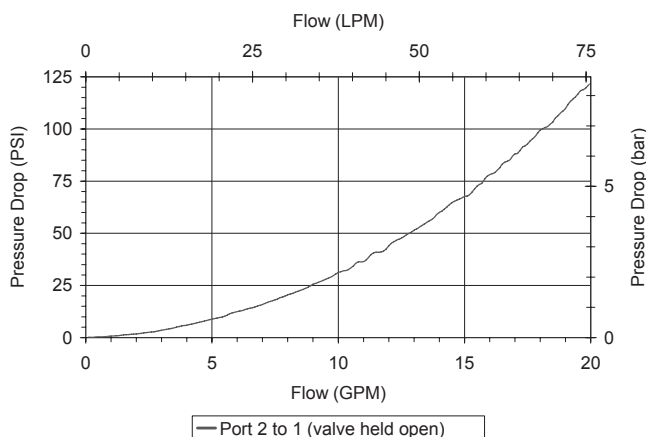
- Hardened parts for long life.
- Industry common cavity.
- Corrosion resistant.
- Optional bias springs for backpressure application flexibility.


HYDRAULIC SYMBOL


65 PSI bias provides comfortable effort where return line is near zero. 160 PSI option may be difficult to pull, if tank pressure is near zero. Stainless Steel Shaft. Pressure above SPRING BIAS PRESSURE at port (2) may cause valve to self open.

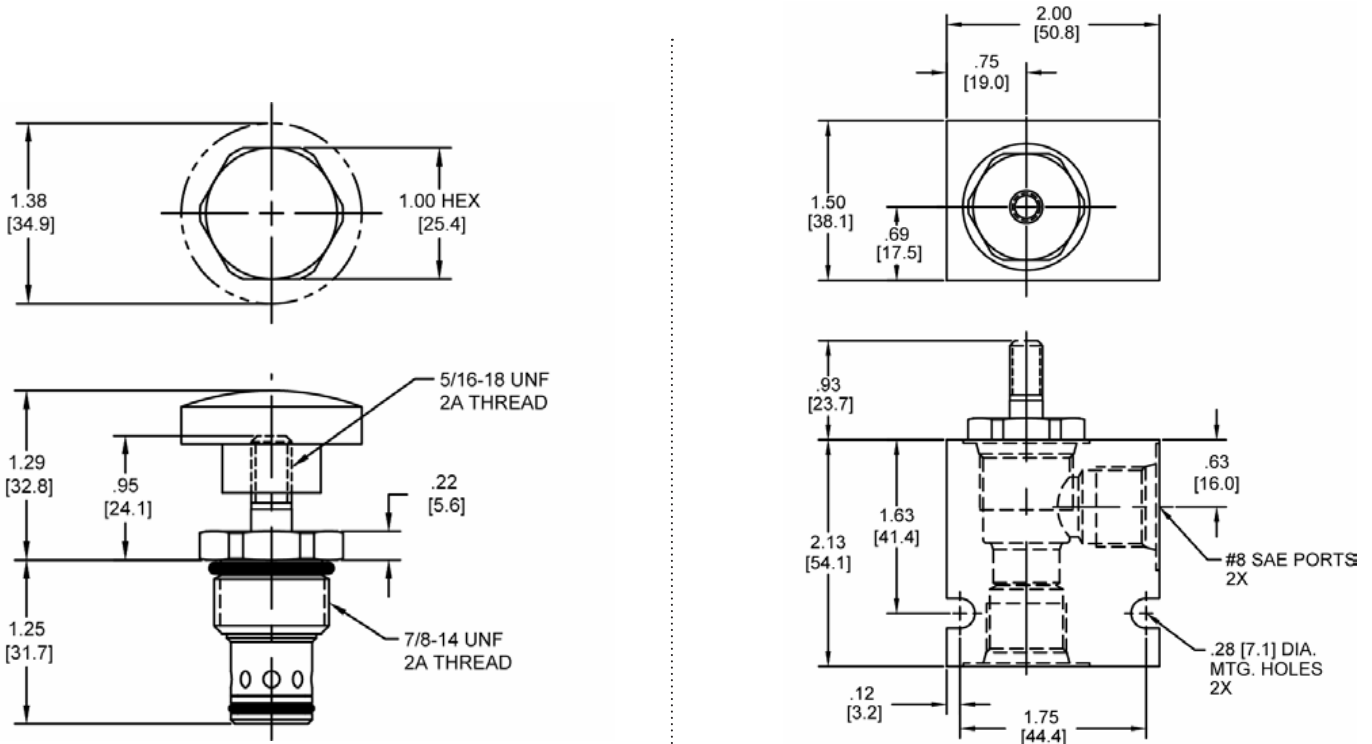
PERFORMANCE

Actual Test Data (Cartridge Only)


VALVE SPECIFICATIONS

| | |
|------------------------------------|---------------------------------|
| Nominal Flow | 20 GPM (76 LPM) |
| Rated Operating Pressure | 3500 PSI (241 bar) |
| Typical Internal Leakage (150 SSU) | 0-5 drops/min |
| Viscosity Range | 36 to 3000 SSU (3 to 647 cSt) |
| Filtration | ISO 18/16/13 |
| Media Operating Temp. Range | -40° to 250°F (-40° to 120°C) |
| Weight | .75 lbs (.34 kg) |
| Operating Fluid Media | General Purpose Hydraulic Fluid |
| Cartridge Torque Requirements | 30 ft-lbs (40.6 Nm) |
| Cavity | DELTA 2W |
| Cavity Form Tool (Finishing) | 40500000 |
| Seal Kit | 21191200 |

DIMENSIONS



Body Weight: .47 lbs (.21 kg)

ORDERING INFORMATION

| | |
|------------------------------------------------------------------------------------------------------------------------------------------------------------------------------------------------------------------------------------------------------------------------------------------------------------------|-------------------------------------------------------------------------------------------------------------|
| <p>DE-MCS - - - -</p> <p>OPTIONS</p> <p>Buna Standard 00</p> <p>Viton Standard V0</p> <p>Buna, Screen A0</p> <p>Viton, Screen W0</p> <p>Buna, Knob 0K</p> <p>Viton, Knob VK</p> <p>Buna, Knob, Screen AK</p> <p>Viton, Knob, Screen WK</p> | <p>BODIES</p> <p>Blank Without Body</p> <p>N 3/8" NPTF Ports</p> <p>S #8 SAE Ports</p> |
| | <p>SPRING BIAS PRESSURE</p> <p>0065 65 PSI</p> <p>0160 160 PSI</p> |

Note: use screen only if flow direction is from (1) to (2).

Note: pressure above SPRING BIAS PRESSURE at port (2) may cause valve to self open.

WARNING: the specifications/application data shown in our catalogs and data sheets are intended only as a general guide for the product described (herein). Any specific application should not be undertaken without independent study, evaluation, and testing for suitability.