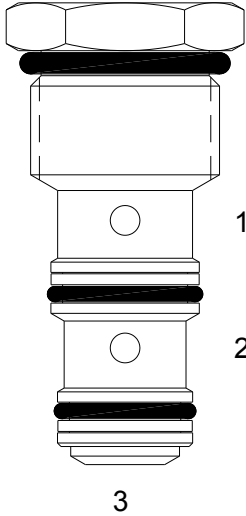


DF-CSB SHUTTLE VALVE

DESCRIPTION

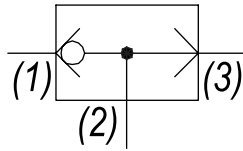
10 size, 7/8-14 thread, "Delta" series, shuttle valve.

OPERATION

The DF-CSB allows flow from the higher pressure of (1) or (3) to (2). The valve is commonly used as a load sense to direct oil from the pressure side of a bidirectional hydraulic motor to a pressure-released hydraulic brake.

FEATURES

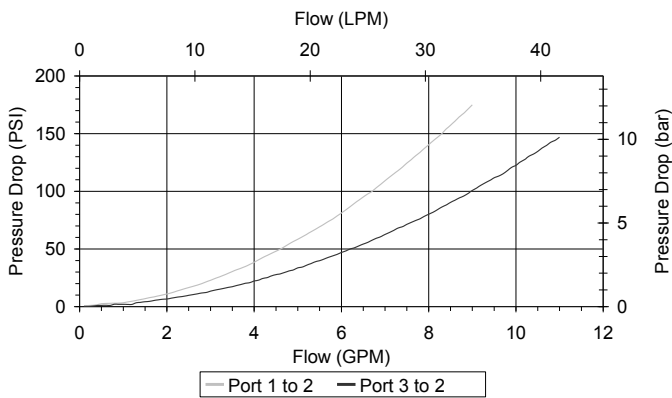
- Hardened parts for long life.
- Industry common cavity.

HYDRAULIC SYMBOL


*Tangency connections to cavity are not recommended.
Inlet to port (2) is not recommended.
Do not use orifice disk under cartridge valve.*

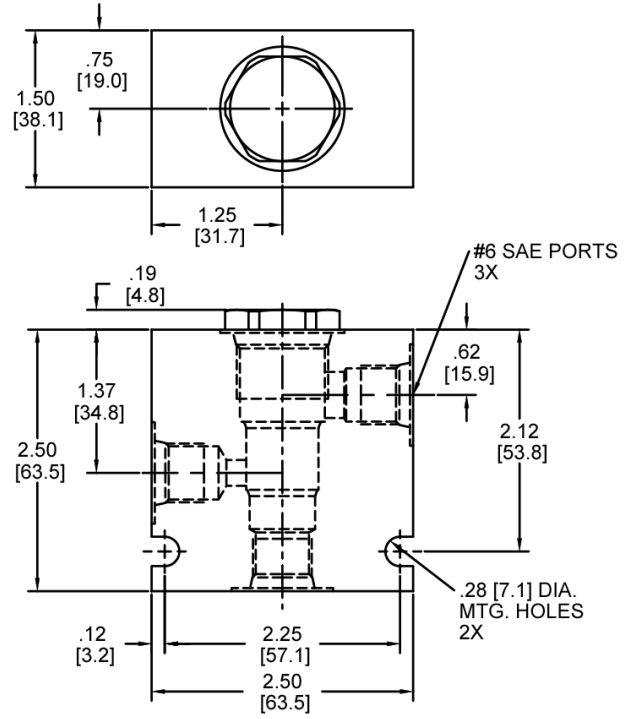
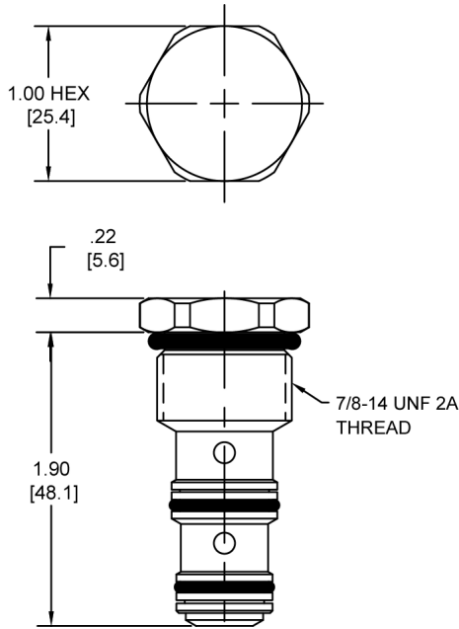
PERFORMANCE

Actual Test Data (Cartridge Only)


VALVE SPECIFICATIONS

Nominal Flow	8 GPM (30 LPM)
Rated Operating Pressure	3500 PSI (241 bar)
Typical Internal Leakage (150 SSU)	1 cu in/min (16 ml/min)
Viscosity Range	36 to 3000 SSU (3 to 647 cSt)
Filtration	ISO 18/16/13
Media Operating Temp. Range	-40° to 250°F (-40° to 120°C)
Weight	.22 lbs (.10 kg)
Operating Fluid Media	General Purpose Hydraulic Fluid
Cartridge Torque Requirements	30 ft-lbs (40.6 Nm)
Cavity	DELTA 3W
Cavity Form Tool (Finishing)	40500001
Seal Kit	21191206

DIMENSIONS



Body Weight: .56 lbs (.25 kg)

ORDERING INFORMATION

DF-CSB -		-	-
OPTIONS			BODIES
Buna Standard	00	Blank	Without Body
Viton Standard	V0	N	1/4" NPTF Ports
		S	#6 SAE Ports

WARNING: the specifications/application data shown in our catalogs and data sheets are intended only as a general guide for the product described (herein). Any specific application should not be undertaken without independent study, evaluation, and testing for suitability.