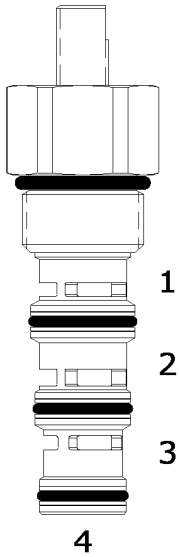


DG-M4B MANUAL ROTARY SPOOL VALVE, 4 WAY 2 POSITION, CLOSED CENTER

DESCRIPTION

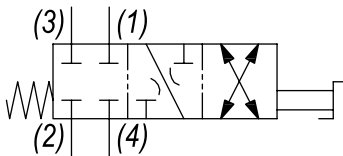
10 size, 7/8-14 thread, "Delta" series, 4 way 2 position, manual rotary spool valve, closed center.

OPERATION

The DG-M4B when rotated fully to clockwise position, this valve blocks flow at all ports. When rotated fully to counterclockwise position, the cartridge directs flow between (2) and (1), as well as (3) and (4).

FEATURES

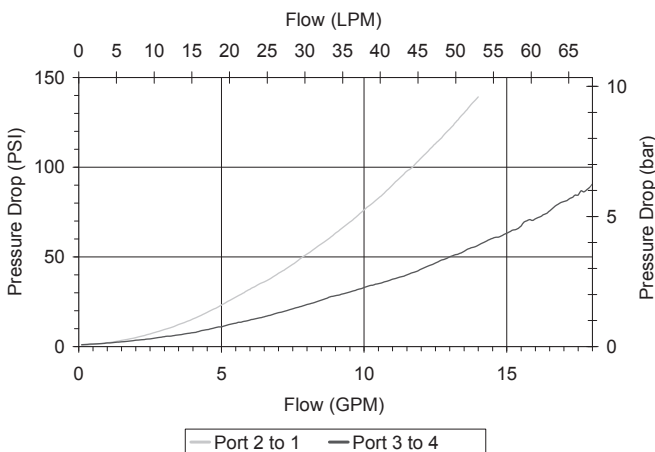
- Hardened parts for long life.
- Industry common cavity.

HYDRAULIC SYMBOL


May be used as metering product. Valve has approximately 3.5 turns adjustment from extreme clockwise fully to counterclockwise positions. See chart for pressure drop.

PERFORMANCE

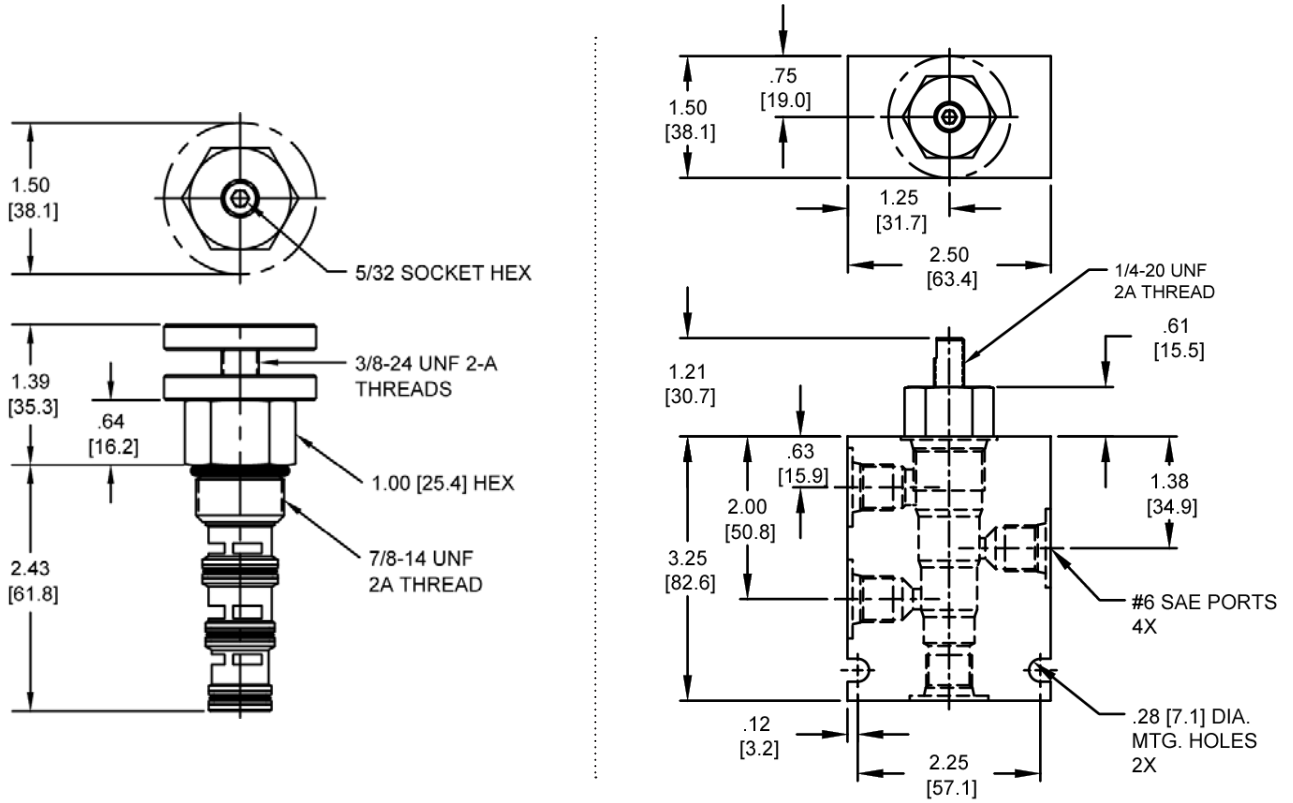
Actual Test Data (Cartridge Only)


VALVE SPECIFICATIONS

Nominal Flow	15 GPM (57 LPM)
Rated Operating Pressure	3000 PSI (207 bar)
Typical Internal Leakage (150 SSU)	5 cu in/min (82 ml/min) per path
Viscosity Range	36 to 3000 SSU (3 to 647 cSt)
Filtration	ISO 18/16/13
Media Operating Temp. Range	-40° to 250°F (-40° to 120°C)
Weight	.33 lbs (.15 kg)
Operating Fluid Media	General Purpose Hydraulic Fluid
Cartridge Torque Requirements	30 ft-lbs (40.6 Nm)
Cavity	DELTA 4W
Cavity Form Tool (Finishing)	40500002
Seal Kit	21191214

WARNING: the specifications/application data shown in our catalogs and data sheets are intended only as a general guide for the product described (herein). Any specific application should not be undertaken without independent study, evaluation, and testing for suitability.

DIMENSIONS



Body Weight: .99 lbs (.45 kg)

ORDERING INFORMATION

DG-M4B - - -	
OPTIONS	BODIES
Buna, Standard 00	Blank Without Body
Viton, Standard V0	N 1/4" NPTF Ports
Buna, Knob 0K	S #6 SAE Ports
Viton, Knob VK	

W/51 / 12-2022

WARNING: the specifications/application data shown in our catalogs and data sheets are intended only as a general guide for the product described (herein). Any specific application should not be undertaken without independent study, evaluation, and testing for suitability.