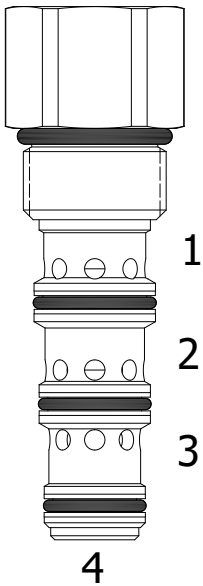


HDG-PDO PILOTED DIRECTIONAL VALVE, 2 WAY, NORMALLY OPEN

DESCRIPTION

"High Pressure" 10 size, 7/8-14 thread, "Delta" series, 2 way normally open piloted directional valve.

OPERATION

The HDG-PDO in neutral (un-piloted), allows flow between (2) and (3) bi-directionally.

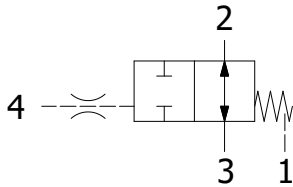
The spring chamber is constantly vented at (1).

On attainment of a predetermined pressure at (4), the cartridge blocks flow from (2) to (3).

Note that the backpressure value at (1) must be added to the selected pressure setting to determine pilot pressure necessary to move valve to second position.

FEATURES

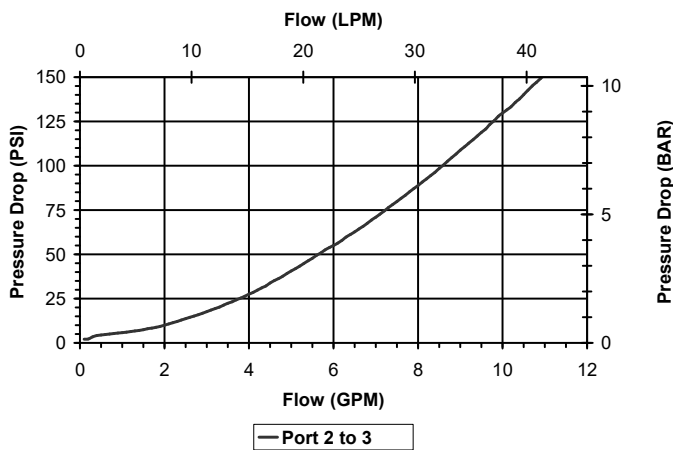
- Hardened parts for long life.
- Industry common cavity.

HYDRAULIC SYMBOL


Installation of this valve does not allow for the use of orifice disks beneath the valve in a standard cavity.

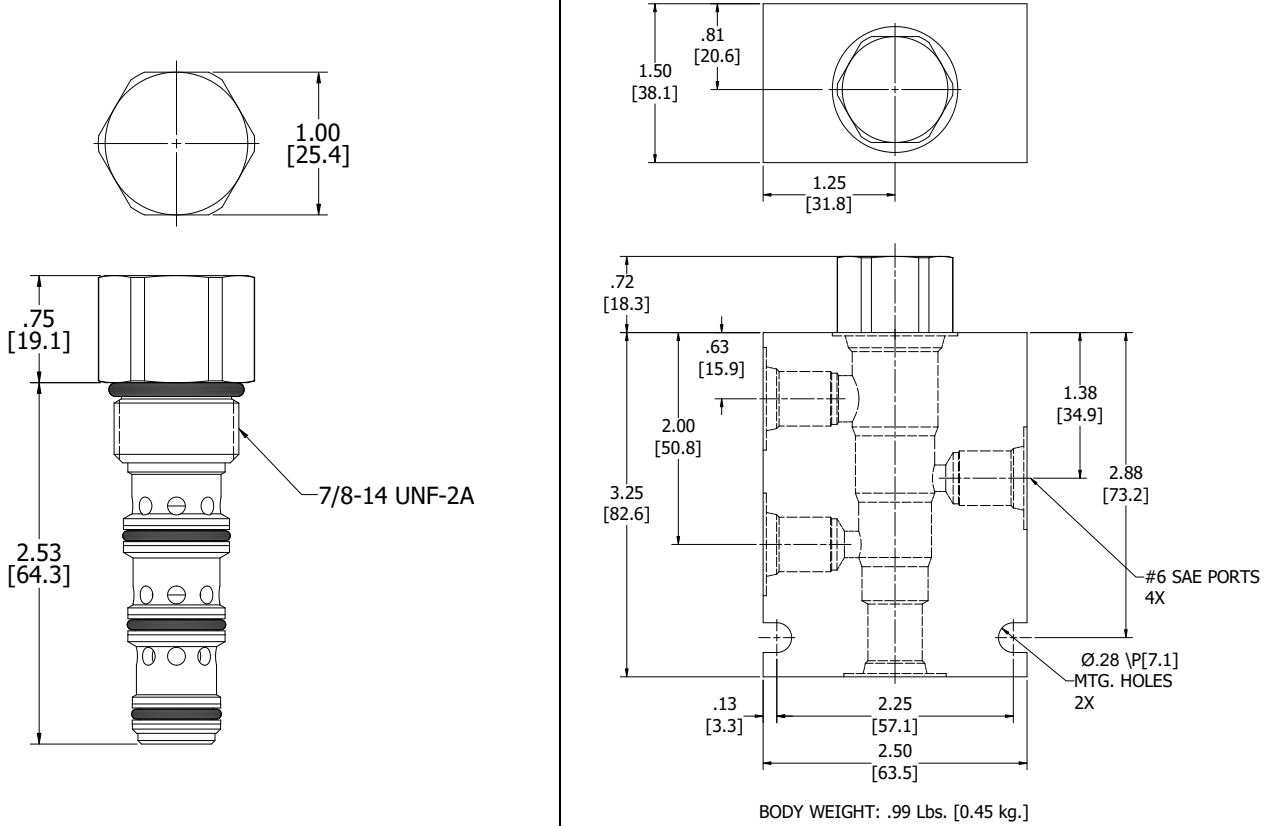
PERFORMANCE

Actual Test Data (Cartridge Only)


VALVE SPECIFICATIONS

Nominal Flow	10 GPM (38 LTR/M)
Rated Operating Pressure	4200 PSI (290 bar)
Typical Internal Leakage (150 SSU)	8 cu in/min (82 ml/min)
Viscosity Range	36 to 3000 SSU (3 to 647 cSt)
Filtration	ISO 18/16/13
Media Operating Temperature Range	-40° to 250° F (-40° to 120° C)
Weight	0.62 lbs. (0.28 kg)
Operating Fluid Media	General Purpose Hydraulic Fluid
Cartridge Torque Requirements	40 ft-lbs (54 Nm)
Cavity	DELTA 4W
Cavity Form Tool (Finishing)	40500002
Seal Kit	21191214

DIMENSIONS



ORDERING INFORMATION

HDG-PDO		-	-	-	-
OPTIONS					BODIES
Buna Standard	00			Blank	Without Body
Viton Standard	V0			N	1/4 NPTF Ports
				S	#6 SAE Ports
					PRESSURE SETTING
			0040	40 PSI	
			0080	80 PSI	
			0160	160 PSI	

WARNING: the specifications/application data shown in our catalogs and data sheets are intended only as a general guide for the product described (herein). Any specific application should not be undertaken without independent study, evaluation, and testing for suitability.