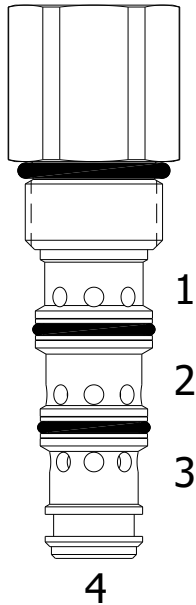


**HDG-PSS HOT OIL SHUTTLE VALVE**

**DESCRIPTION**

"High Pressure" 10 size, 7/8-14 thread, "Delta" series, hot oil shuttle valve

**OPERATION**

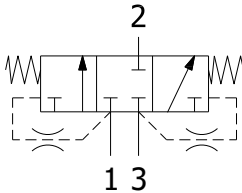
The HDG-PSS, with internal piloting at port (1) or (3), oil will flow from the port opposite of the port piloted to port (2), thus removing oil from the low-pressure side for cooling or filtration purposes.

The Valve is spring bias neutral, relying solely on the internal pilot pressure signal to shift to either side.

The HDG-PSS is closed in transition.

**FEATURES**

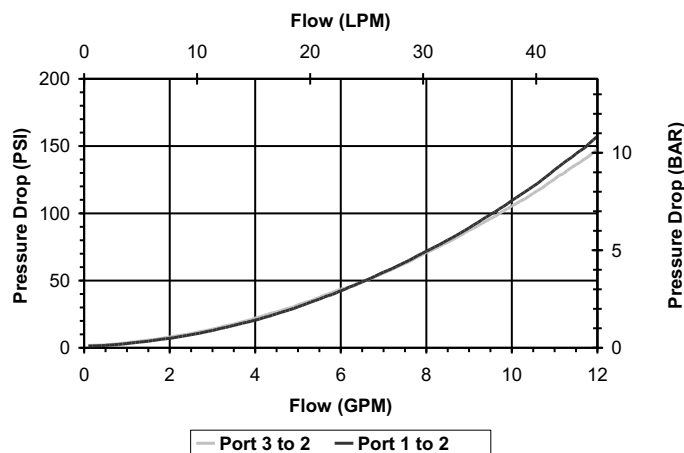
- Hardened parts for long life.
- Industry common cavity.

**HYDRAULIC SYMBOL**


Do not use orifice disk under cartridge valve.

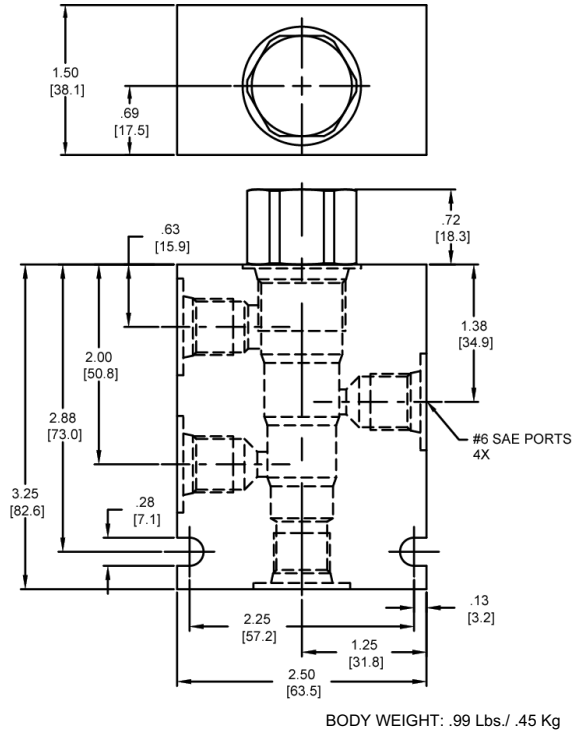
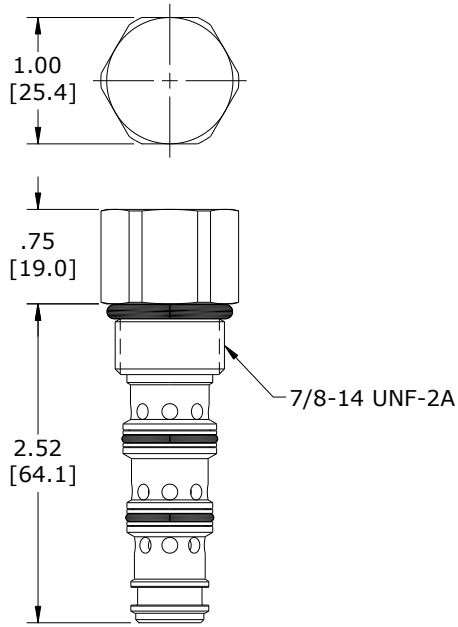
**PERFORMANCE**

Actual Test Data (Cartridge Only)


**VALVE SPECIFICATIONS**

Nominal Flow	10 GPM (38 LPM)
Rated Operating Pressure	4200 PSI (290 BAR)
Typical Internal Leakage (150 SSU)	8 cu/in per/min (131 ml/min)
Viscosity Range	36 to 3000 SSU (3 to 647 cSt)
Filtration	ISO 18/16/13
Media Operating Temperature Range	-40° to 250° F (-40° to 120° C)
Weight	.034 lbs. (0.15 kg)
Operating Fluid Media	General Purpose Hydraulic Fluid
Cartridge Torque Requirements	40 ft-lbs (54 Nm)
Cavity	<a href="#">DELTA 4W</a>
Cavity Form Tool (Finishing)	40500002
Seal Kit	21191212

**DIMENSIONS**



**ORDERING INFORMATION**

<b>HDG-PSS</b>		-	-	-	-
<b>OPTIONS</b>					
Buna Standard	<b>00</b>				
Viton Standard	<b>V0</b>				
				<b>BODIES</b>	
				Blank	Without Body
				<b>N</b>	1/4 NPTF Ports
				<b>S</b>	#6 SAE Ports
					<b>CRACK PRESSURE</b>
			<b>0080</b>		80 PSI
			<b>0120</b>		120 PSI
			<b>0160</b>		160 PSI

**WARNING:** the specifications/application data shown in our catalogs and data sheets are intended only as a general guide for the product described (herein). Any specific application should not be undertaken without independent study, evaluation, and testing for suitability.