

**HTT-CVA DIRECT ACTING CHECK VALVE, POPPET**
**DESCRIPTION**

"High Pressure" 12 size, 1 1/16-12 thread, "Twelve" series, direct acting check valve.

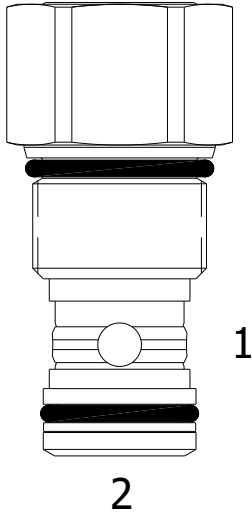
**OPERATION**

The HTT-CVA allows flow passage from (2) to (1), while normally blocking oil flow from (1) to (2).

The cartridge has a fully guided poppet, which is spring biased closed, until sufficient pressure is applied at (2) to open to (1).

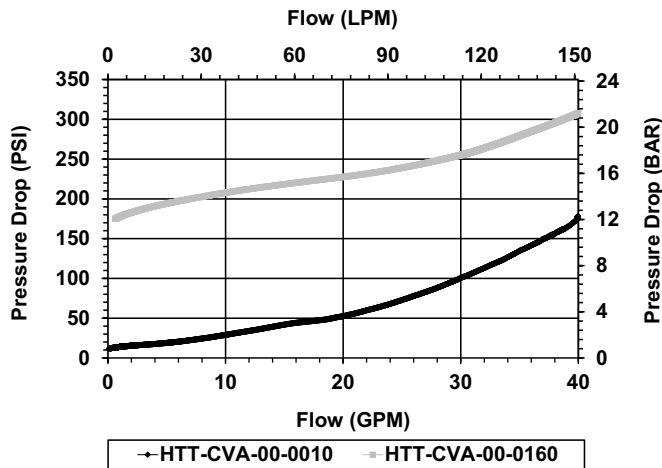
**FEATURES**

- Hardened parts for long life and low leakage.
- Industry common cavity.
- Optional bias springs for backpressure application flexibility.


**HYDRAULIC SYMBOL**

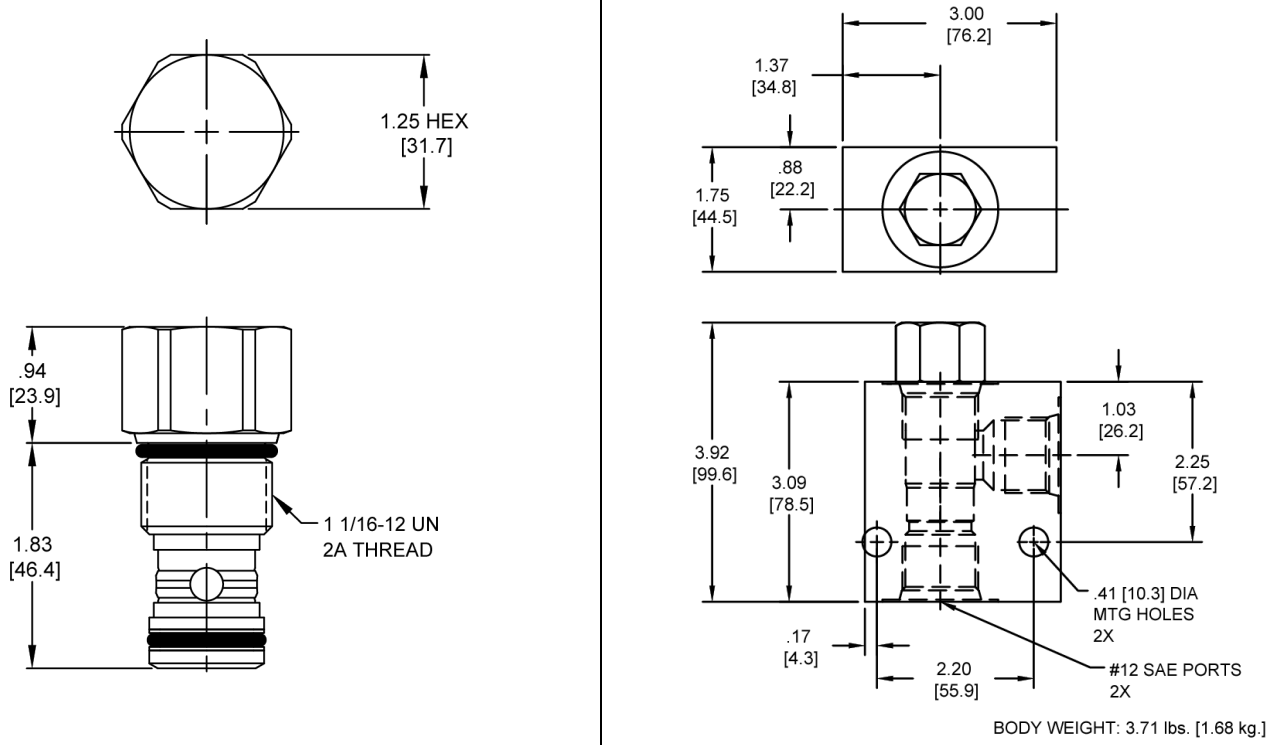
**PERFORMANCE**

Actual Test Data (Cartridge Only)


**VALVE SPECIFICATIONS**

Nominal Flow	35 GPM (132 LTR/M)
Rated Operating Pressure	5000 PSI (345 bar)
Typical Internal Leakage (150 SSU)	0-5 drops/min
Viscosity Range	36 to 3000 SSU (3 to 647 cSt)
Filtration	ISO 18/16/13
Media Operating Temperature Range	-40° to 250° F (-40° to 120° C)
Weight	0.55 lbs. (0.25 kg)
Operating Fluid Media	General Purpose Hydraulic Fluid
Cartridge Torque Requirements	90 ft-lbs (122 Nm)
Cavity	<b>TWELVE 2W</b>
Cavity Form Tool (Finishing)	40500032
Seal Kit	21191300

**DIMENSIONS**



**ORDERING INFORMATION**

<b>HTT-CVA</b> - - - -			
<b>OPTIONS</b>			<b>BODIES</b>
Buna Standard	<b>00</b>		Blank
Viton Standard	<b>V0</b>		<b>S</b> Without Body
			<b>#12 SAE Ports</b>
		<b>CRACK PRESSURE</b>	
		<b>0010</b>	10 PSI
		<b>0030</b>	30 PSI
		<b>0050</b>	50 PSI
		<b>0160</b>	160 PSI

**WARNING:** the specifications/application data shown in our catalogs and data sheets are intended only as a general guide for the product described (herein). Any specific application should not be undertaken without independent study, evaluation, and testing for suitability.