

HTT CVR REVERSE FLOW CHECK VALVE, POPPET
DESCRIPTION

"High Pressure" 12 size, 1 1/16-12 thread, "Twelve" series, reverse flow check valve.

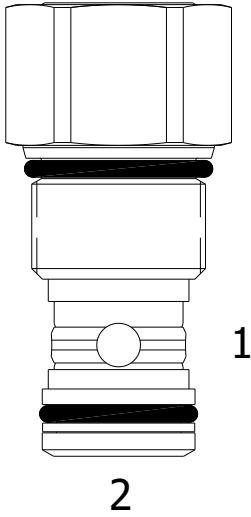
OPERATION

The HTT-CVR allows free flow from (1) to (2) and blocks flow from (2) to (1).

The cartridge has a fully guided poppet, which is spring biased closed, until sufficient pressure is applied at (1) to open to (2).

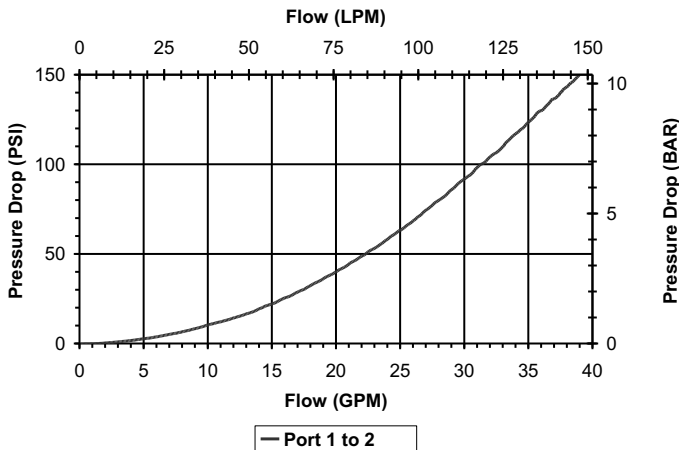
FEATURES

- Hardened parts for long life and low leakage.
- Industry common cavity.
- Optional bias springs for backpressure application flexibility.


HYDRAULIC SYMBOL

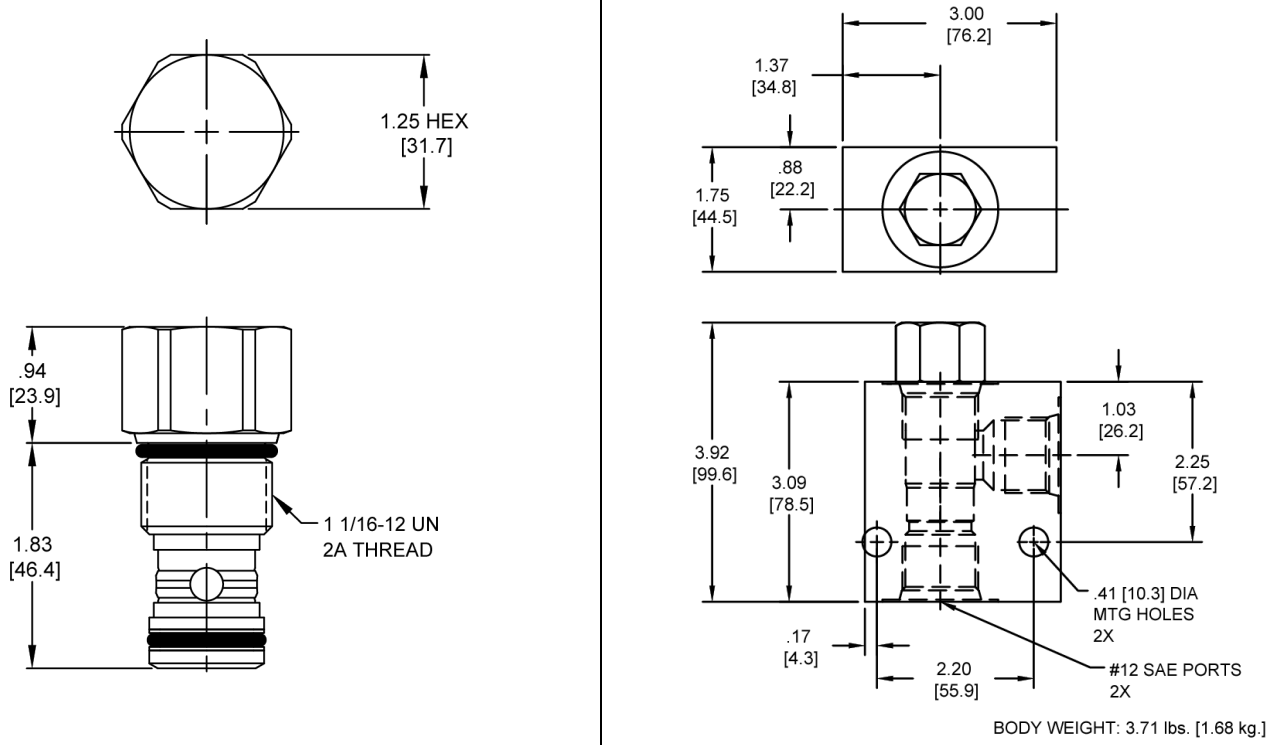
PERFORMANCE

Actual Test Data (Cartridge Only)


VALVE SPECIFICATIONS

Nominal Flow	35 GPM (132 LPM)
Rated Operating Pressure	5000 PSI (345 bar)
Typical Internal Leakage (150 SSU)	0-8 drops/min
Viscosity Range	36 to 3000 SSU (3 to 647 cSt)
Filtration	ISO 18/16/13
Media Operating Temperature Range	-40° to 250° F (-40° to 120° C)
Weight	0.55 lbs. (0.25 kg)
Operating Fluid Media	General Purpose Hydraulic Fluid
Cartridge Torque Requirements	90 ft-lbs (122 Nm)
Cavity	TWELVE 2W
Cavity Form Tool (Finishing)	40500032
Seal Kit	21191300

DIMENSIONS



ORDERING INFORMATION

HTT-CVR -		-	-	-
OPTIONS				BODIES
Buna Standard	00			Without Body
Viton Standard	V0			#12 SAE Ports
				S
				Blank
				CRACK PRESSURE
		0010	10 PSI	
		0030	30 PSI	
		0050	50 PSI	

WARNING: the specifications/application data shown in our catalogs and data sheets are intended only as a general guide for the product described (herein). Any specific application should not be undertaken without independent study, evaluation, and testing for suitability.