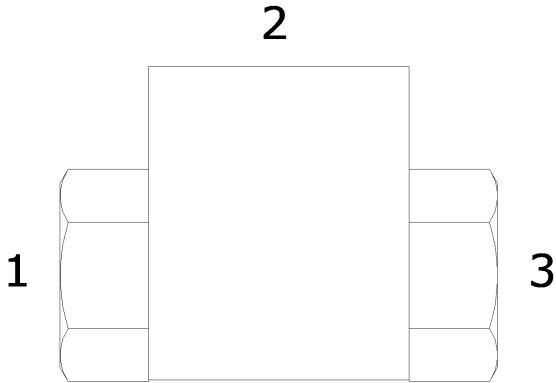


**IM-CSB INLINE SHUTTLE VALVE**



**DESCRIPTION**

#6 SAE, inline shuttle valve.

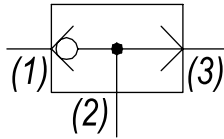
**OPERATION**

The IM-CSB allows flow from the higher pressure of (1) or (3) to (2). The valve is commonly used as a load sense to direct oil from the pressure side of a bidirectional hydraulic motor to a pressure released hydraulic brake.

**FEATURES**

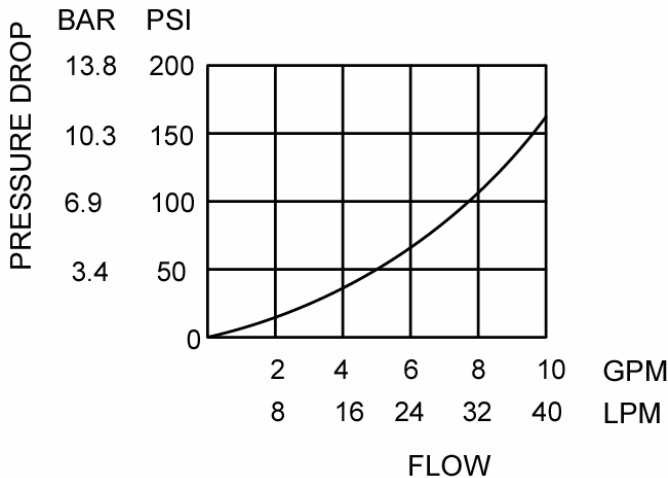
- Hardened parts for long life.

**HYDRAULIC SYMBOL**



**PERFORMANCE**

Actual Test Data (Cartridge Only)

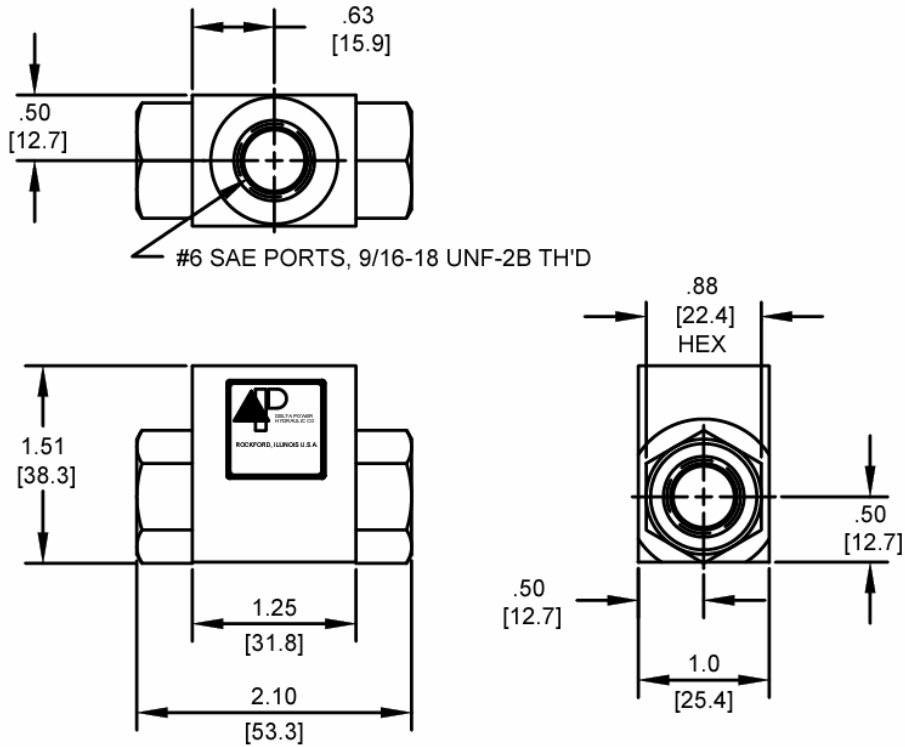


ABOVE CURVE IS WITH HYDRAULIC OIL 150 SSU AT 100°F.

**VALVE SPECIFICATIONS**

Nominal Flow Max	10 GPM (38 LPM)
Rated Operating Pressure	3500 PSI (241 bar)
Typical Internal Leakage (150 SSU)	1 cu in/min (16 ml/min)
Viscosity Range	36 to 3000 SSU (3 to 647 cSt)
Filtration	ISO 18/16/13
Media Operating Temp. Range	-40° to 250°F (-40° to 120°C)
Weight	.28 lbs (.13 kg)
Operating Fluid Media	General Purpose Hydraulic Fluid

**DIMENSIONS**



**ORDERING INFORMATION**

**IM-CSB -**

**OPTIONS**

Buna Standard **00**

Viton Standard **V0**

**WARNING:** the specifications/application data shown in our catalogs and data sheets are intended only as a general guide for the product described (herein). Any specific application should not be undertaken without independent study, evaluation, and testing for suitability.