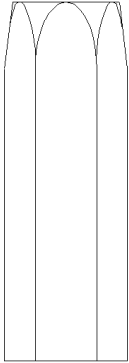


IM-CVA INLINE CHECK VALVE

1



2

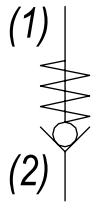
DESCRIPTION

#8 SAE, inline check valve.

OPERATION

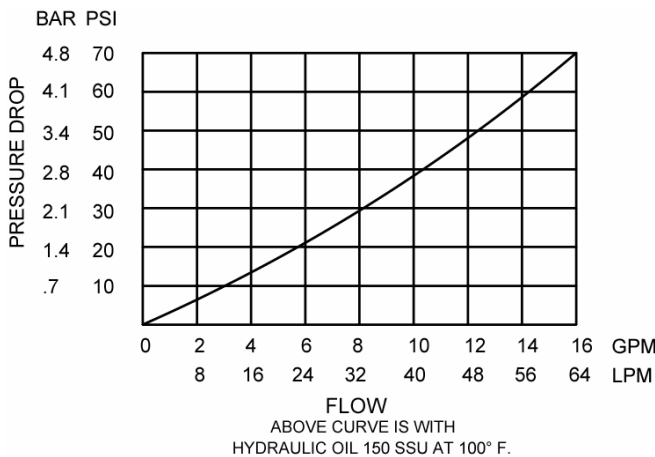
The IM-CVA allows flow from (2) to (1), while normally blocking oil flow from (1) to (2). The valve has a guided check ball, which is spring-biased closed until sufficient pressure is applied at (2) to open to (1).

HYDRAULIC SYMBOL



PERFORMANCE

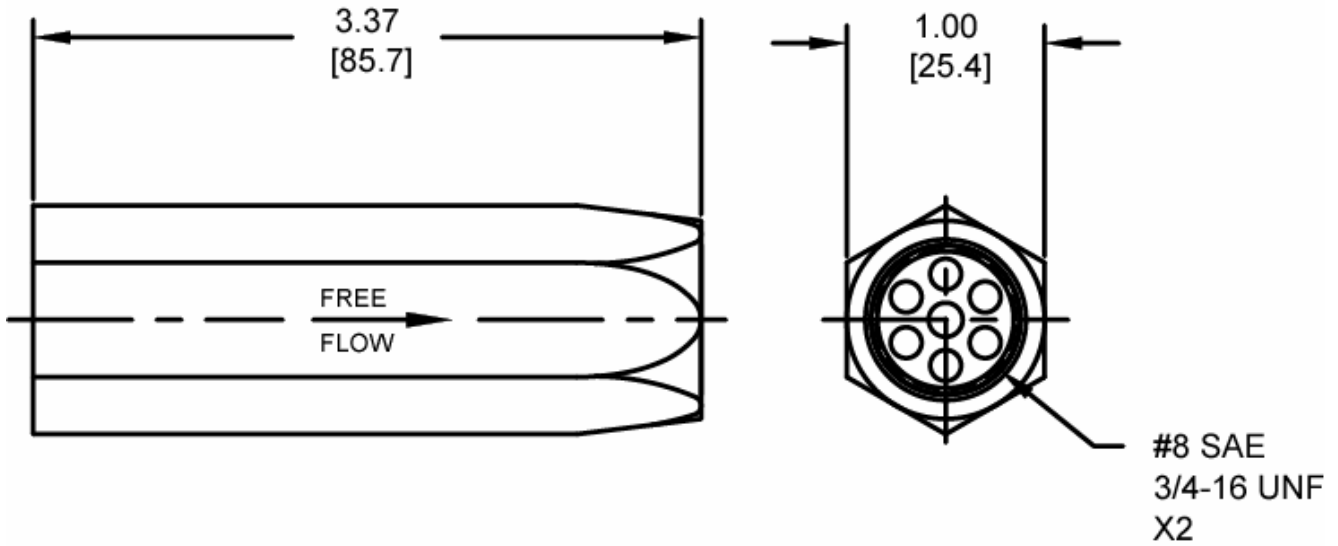
Actual Test Data (Cartridge Only)



VALVE SPECIFICATIONS

Nominal Flow	8 GPM (30 LPM)
Rated Operating Pressure	3000 PSI (207 bar)
Typical Internal Leakage (150 SSU)	0-5 drops/min
Viscosity Range	36 to 3000 SSU (3 to 647 cSt)
Filtration	ISO 18/16/13
Media Operating Temp. Range	-40° to 250°F (-40° to 120°C)
Weight	.53 lbs (.24 kg)
Operating Fluid Media	General Purpose Hydraulic Fluid

DIMENSIONS



ORDERING INFORMATION

IM-CVA		-	-
	<u>OPTIONS</u>		<u>CRACK PRESSURE</u>
	Buna Standard	00	0005 5 PSI
			0025 25 PSI
			0050 50 PSI
			0075 75 PSI

WARNING: the specifications/application data shown in our catalogs and data sheets are intended only as a general guide for the product described (herein). Any specific application should not be undertaken without independent study, evaluation, and testing for suitability.