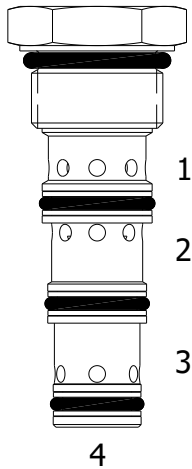


PQ-CDP DOUBLE PILOT OPERATED CHECK VALVE

DESCRIPTION

8 size, 3/4 -16 thread, "Power" series, double pilot operated check valve.

OPERATION

The PQ-CDP allows flow to pass from (3) to (4) and (2) to (1). The valve blocks flow from (4) to (3) and from (1) to (2). Blocked flow is released when pilot pressure is applied to the port opposite of (3) and /or (2) respectively.

The valve has a 3:1 pilot ratio, so at least 1/3 of the load pressure at port (4) or (1) is required at the pilot line ports (ports (4) or (1) respectively) to open the flow passage to allow flow from port (4) or (1) respectively.

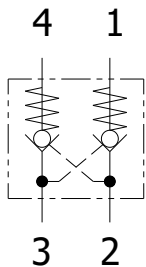
FEATURES

- Hardened parts for long life.
- Industry common cavity.

NOTE: Maximum 0.438 diameter hole allowed beneath cavity

VALVE SPECIFICATIONS

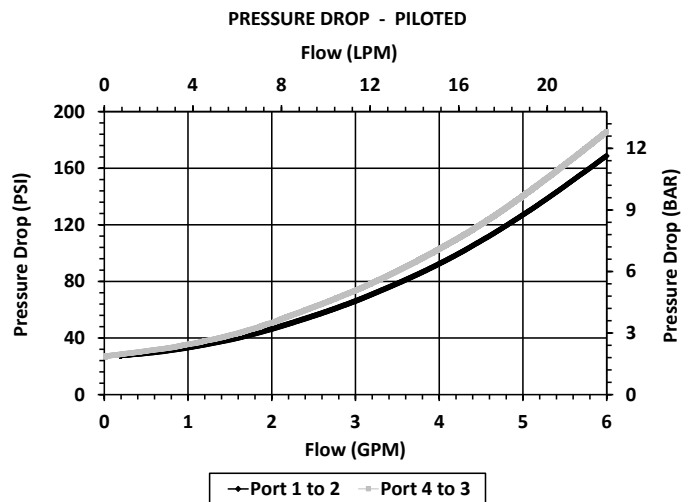
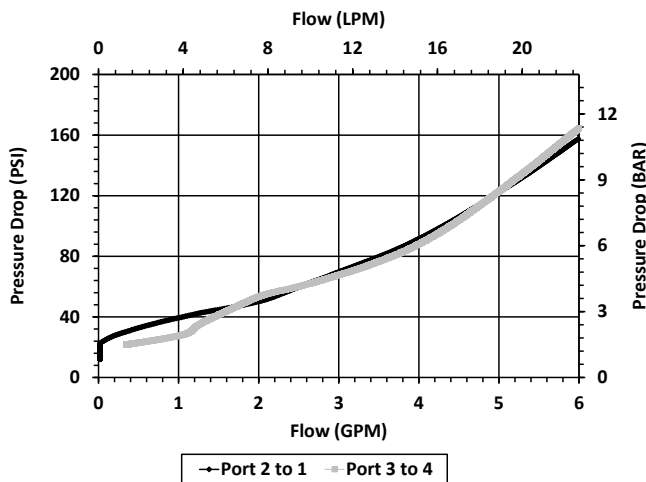
Nominal Flow	5 GPM (19 LPM)
Rated Operating Pressure	3000 PSI (207 bar)
Typical Internal Leakage (150 SSU)	0 - 5 drop / min
Viscosity Range	36 to 3000 SSU (3 to 647 cSt)
Filtration	ISO 18/16/13
Media Operating Temperature Range	-40° to 250° F (-40° to 120° C)
Weight	0.12 lbs. (0.05 kg)
Operating Fluid Media	General Purpose Hydraulic Fluid
Cartridge Torque Requirements	25 ft-lbs (34 Nm)
Cavity	POWER 4W
Cavity Form Tool (Finishing)	40500029
Seal Kit	21191112

HYDRAULIC SYMBOL


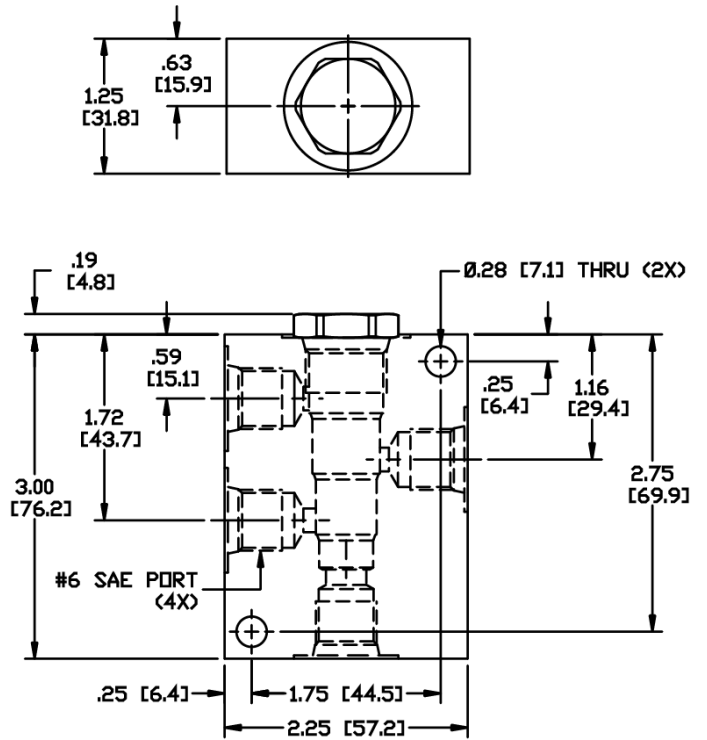
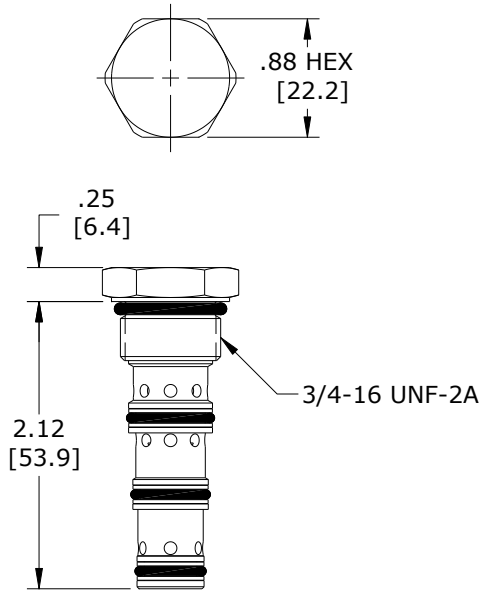
Great for "in cylinder" use applications.

PERFORMANCE

Actual Test Data (Cartridge Only)



DIMENSIONS



ORDERING INFORMATION

PQ-CDP		-	-	-	-
OPTIONS					BODIES
Buna Standard	00				Without Body
Viton Standard	V0				1/4" NPTF PORT
					#6 SAE Ports
					SPRING BIAS
			0020		20 PSI
			0050		50 PSI
			0100		100 PSI

WARNING: the specifications/application data shown in our catalogs and data sheets are intended only as a general guide for the product described (herein). Any specific application should not be undertaken without independent study, evaluation, and testing for suitability.