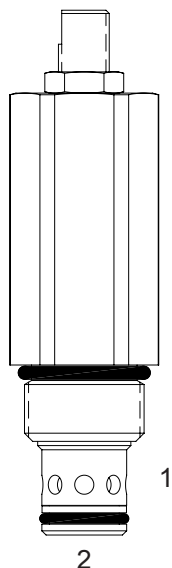


**DE-FCC ADJUSTABLE FLOW CONTROL VALVE, PRESSURE COMPENSATED**

**DESCRIPTION**

10 size, 7/8-14 thread, "Delta" series, pressure compensated, flow control valve.

**OPERATION**

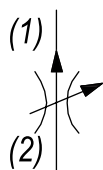
The DE-FCC maintains a constant flow rate out of (1) regardless of load pressure changes in the circuit downstream of (1). The adjustable control orifice can be set to customer flow specification (see options for ranges). The valve begins to respond to load changes when the flow through the valve creates a pressure differential across the control orifice. Consult chart to see regulation at high and low adjustment settings. Reverse flow (1) to (2) returns through the control orifice and is non-compensated. The regulated flow increases from low to high with clockwise rotation of the knob.

**FEATURES**

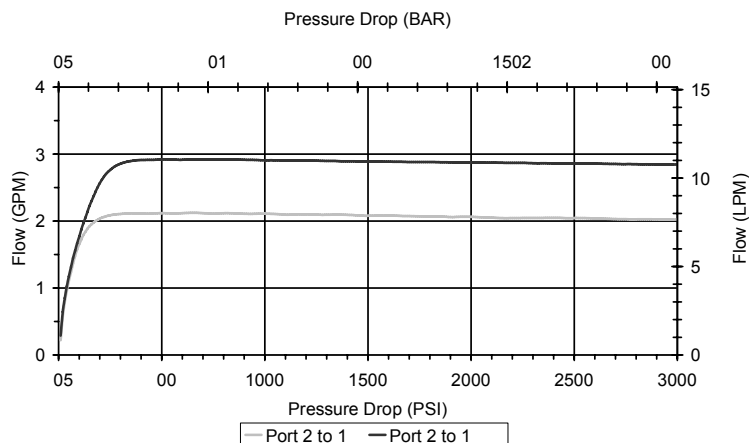
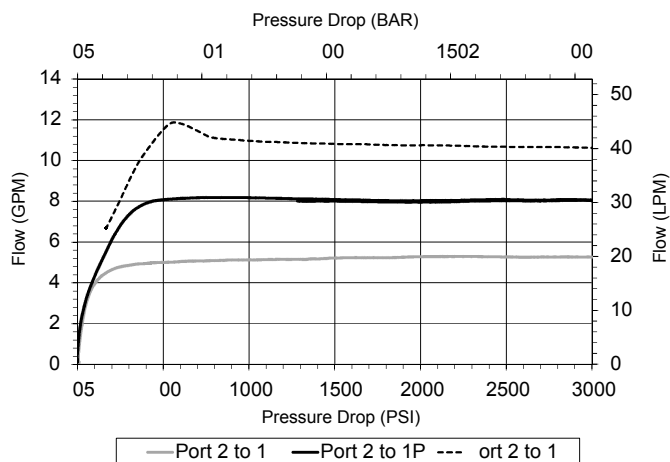
- Hardened parts for long life.
- Industry common cavity.
- Fine low-torque adjustment.



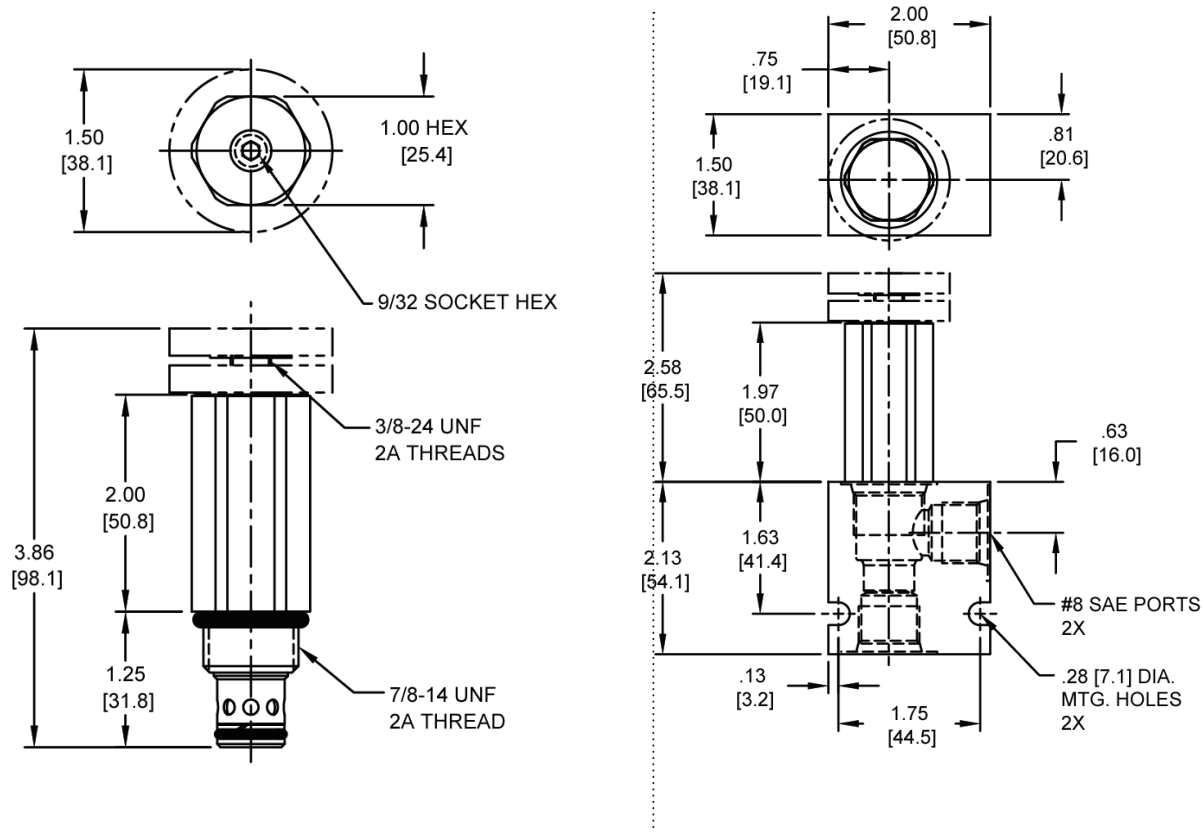
*Lowest pressure drop is obtained with adjustment at lowest setting.*

**HYDRAULIC SYMBOL**

**PERFORMANCE**

Actual Test Data (Cartridge Only)



**WARNING:** the specifications/application data shown in our catalogs and data sheets are intended only as a general guide for the product described (herein). Any specific application should not be undertaken without independent study, evaluation, and testing for suitability.

**DIMENSIONS**


Body Weight: .47 lbs (.21 kg)

**ORDERING INFORMATION**

DE-FCC		-		-		-	
OPTIONS						BODIES	
Buna Standard	00					Blank	Without Body
Viton Standard	V0					N	3/8" NPTF Ports
Buna, Knob	0K					S	#8 SAE Ports
Viton, Knob	VK						
				FLOW			
				1.16	0.80-1.16 GPM		
				1.62	1.16-1.62 GPM		
				2.09	1.62-2.09 GPM		
				2.90	2.09-2.90 GPM		
				3.80	2.90-3.80 GPM		
				5.00	3.80-5.00 GPM		
				8.00	5.00-8.00 GPM		
				11.0	8.00-11.0 GPM		

**FLOW**

Fill In 4 Digit Flow Setting  
Example: 4.00 – 4 GPM

**WARNING:** the specifications/application data shown in our catalogs and data sheets are intended only as a general guide for the product described (herein). Any specific application should not be undertaken without independent study, evaluation, and testing for suitability.