

DF-FAP FULLY ADJUSTABLE PRIORITY FLOW CONTROL VALVE WITH BYPASS

DESCRIPTION

10 size, 7/8-14 thread, "Delta" series, fully adjustable priority flow control valve with bypass

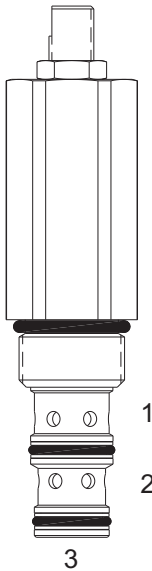
OPERATION

The DF-FAP allows pressure compensated flow from (3) to (1), regulated by the pressure present at (3). Excess flow bypasses out (2). Can be used as a restrictive pressure compensated flow control when the bypass port (2) is blocked.

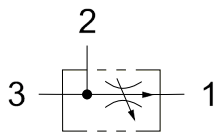
Two flow range valves (see codes below) improve the adjustability and reduce the horsepower losses of the lower flow range model for these lower flows.

FEATURES

- Hardened cage and spool for long life.
- Industry common cavity.



HYDRAULIC SYMBOL



VALVE SPECIFICATIONS

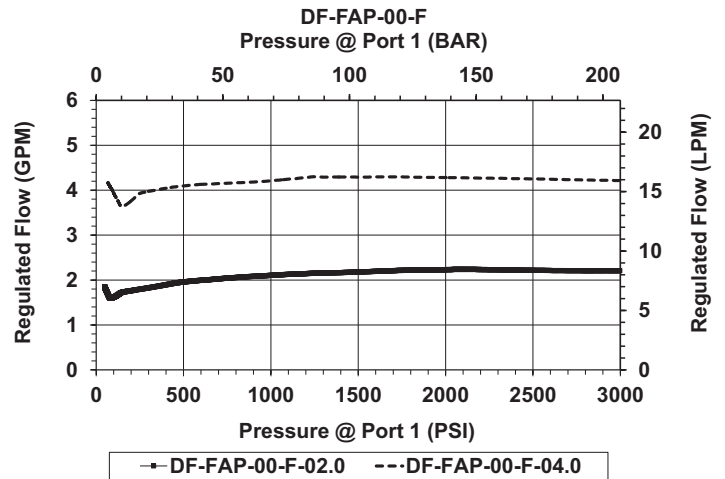
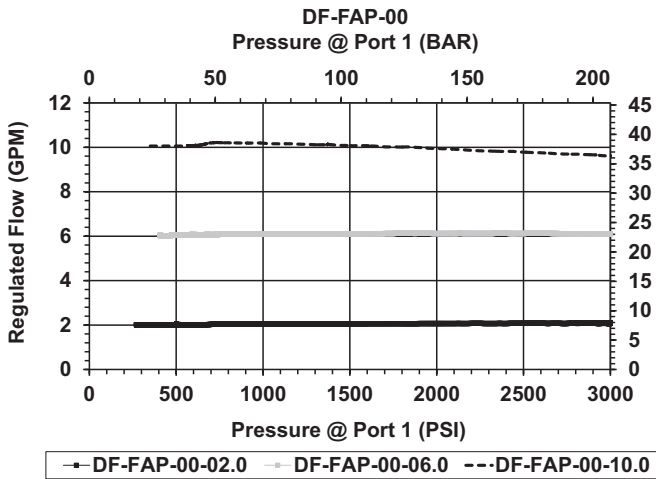
Maximum Regulated Flow	10 GPM (38 LPM)
Rated Operating Pressure	3000 PSI (207bar)
Viscosity Range	36 to 3000 SSU (3 to 647 cSt)
Filtration	ISO 18/16/13
Media Operating Temperature Range	-40° to 250° F (-40° to 120° C)
Weight	0.40 lbs. (0.18 kg)
Operating Fluid Media	General Purpose Hydraulic Fluid
Cartridge Torque Requirements	30 ft-lbs (40.6 Nm)
Cavity	DELTA 3W
Cavity Form Tool (Finishing)	40500001
Seal Kit	21191210

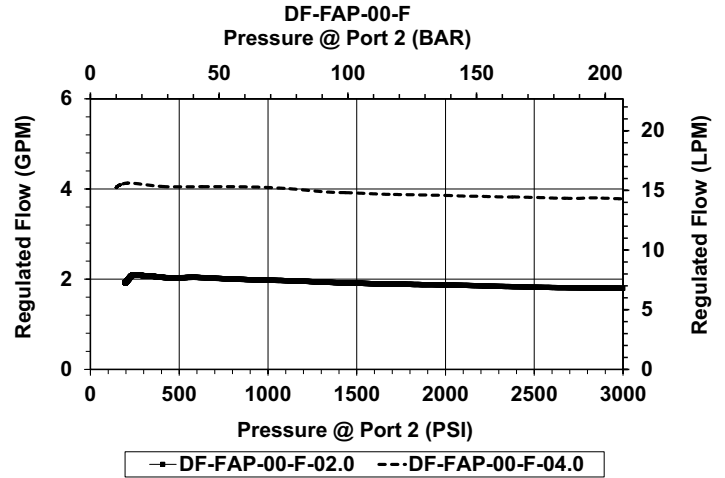
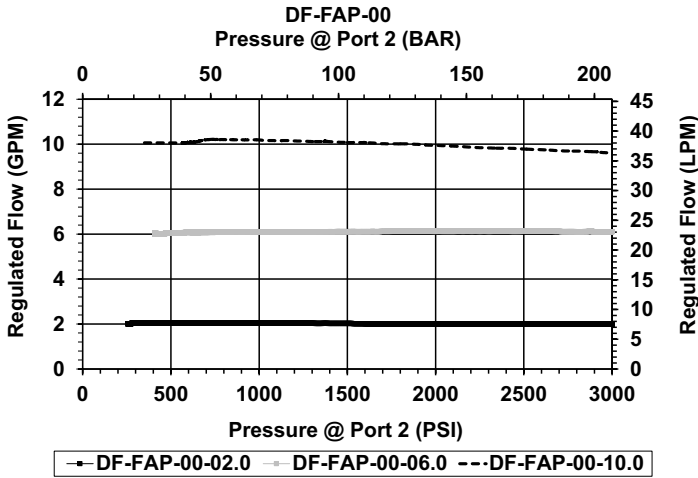


When used as a bypass flow control in applications where the priority flow port will be blocked by external valving, bypass pressure drop will increase unless a small amount of leakage is provided for the priority port. Consult factory.

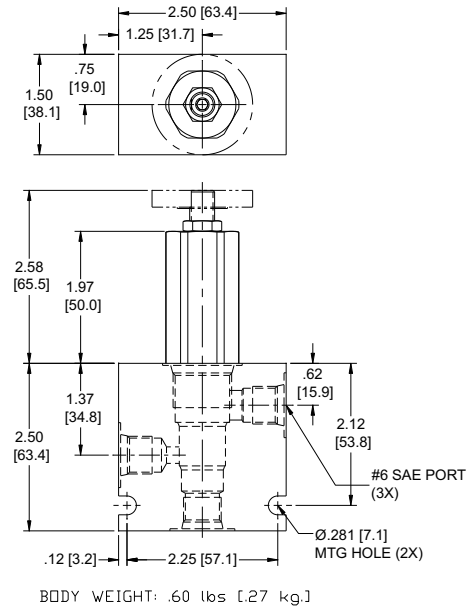
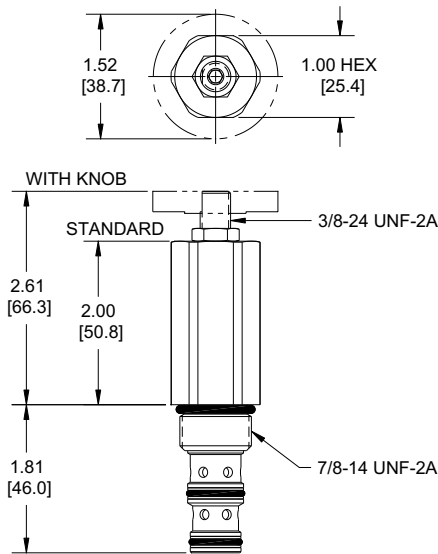
PERFORMANCE

Actual Test Data (Cartridge Only)





DIMENSIONS



ORDERING INFORMATION

DF-FAP

OPTIONS
Buna, Standard
Viton, Standard
Buna, Knob
Viton, Knob

00
V0
0K
VK

BODIES
Blank
N
S

Without Body
3/4 NPTF Ports
#12 SAE Ports

SETTING (IF REQUIRED) 0 to maximum at 0.1 increments are factory available

Blank = NOT FACTORY PRE-SET

Example: 0000 = 0 GPM
04.0 = 4.0 GPM
09.5 = 9.5 GPM

*Settings of 0 to 5.0 GPM will use the 0-5 GPM model
*Settings above 5.0 GPM will use the 0-10 GPM model

STD. FLOW RANGES

Blank 0 - 10 GPM - Full flow range
F 0 - 5 GPM - Fine adjust Low flow range

WARNING: the specifications/application data shown in our catalogs and data sheets are intended only as a general guide for the product described (herein). Any specific application should not be undertaken without independent study, evaluation, and testing for suitability.