

DF-FCP FIXED PRIORITY FLOW CONTROL VALVE
DESCRIPTION

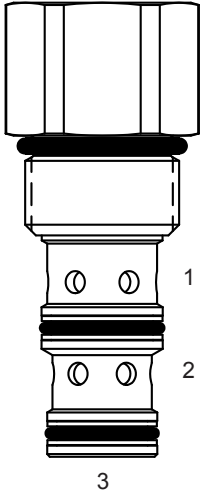
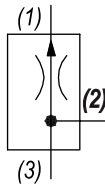
10 size, 7/8-14 thread, "Delta" series, fixed priority flow control valve.

OPERATION

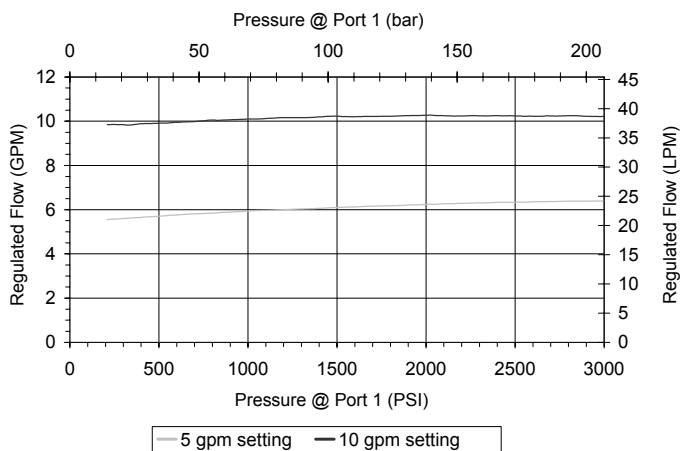
The DF-FCP allows pressure compensated flow from (3) to (1) regulated by the pressure present at (3). Excess flow bypasses out (2). The spring chamber is constantly vented at (1).

FEATURES

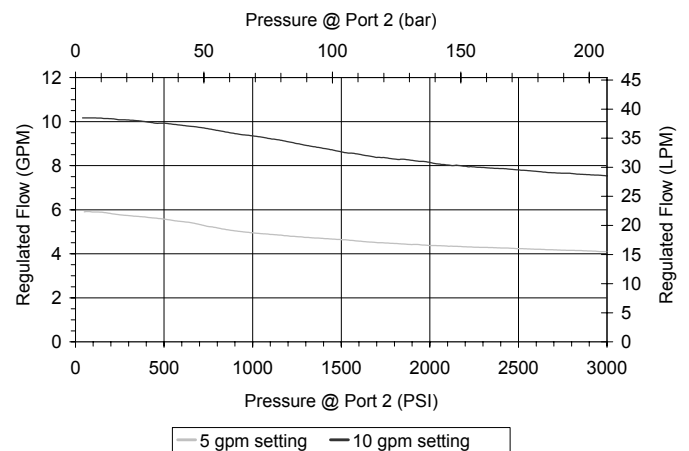
- Hardened parts for long life.
- Industry common cavity.


HYDRAULIC SYMBOL

PERFORMANCE

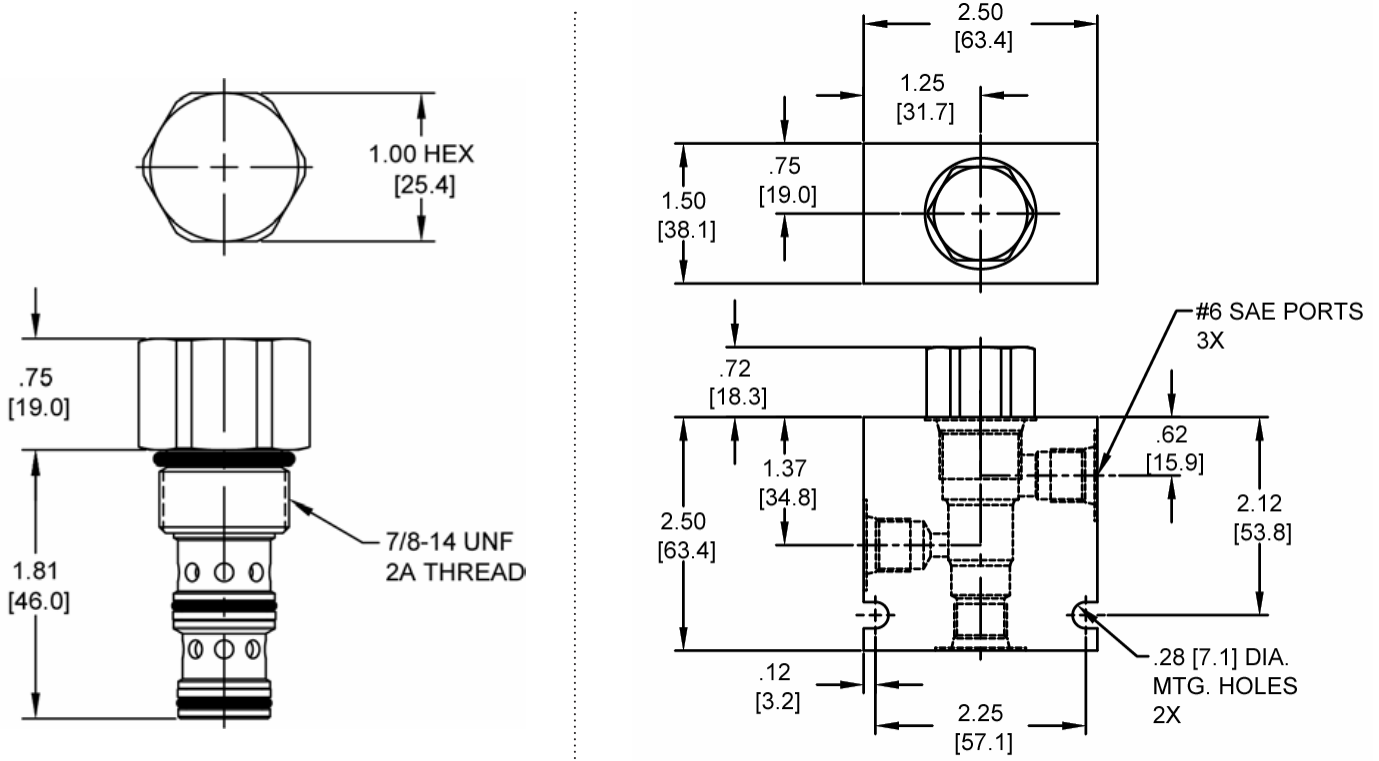
Actual Test Data (Cartridge Only)


VALVE SPECIFICATIONS

Maximum Flow	10 GPM (38 LPM)
Rated Operating Pressure	3000 PSI (207 bar)
Viscosity Range	36 to 3000 SSU (3 to 647 cSt)
Filtration	ISO 18/16/13
Media Operating Temp. Range	-40° to 250°F (-40° to 120°C)
Weight	.26 lbs (.12 kg)
Operating Fluid Media	General Purpose Hydraulic Fluid
Cartridge Torque Requirements	30 ft-lbs (40.6 Nm)
Cavity	DELTA 3W
Cavity Form Tool (Finishing)	40500001
Seal Kit	21191206



DIMENSIONS



Body Weight: .76 lbs (.35 kg)

ORDERING INFORMATION

<p>DF-FCP -</p> <p style="text-align: center;">OPTIONS</p> <p>Buna Standard 00</p> <p>Viton Standard V0</p>	<p style="text-align: center;">BODIES</p> <p>Blank Without Body</p> <p>N 1/4" NPTF Ports</p> <p>S #6 SAE Ports</p>	<p style="text-align: center;">FLOW SETTING</p> <p>01.0 1 GPM</p> <p>02.0 2 GPM</p> <p>03.0 3 GPM</p> <p>04.0 4 GPM</p> <p>05.0 5 GPM</p> <p>06.0 6 GPM</p> <p>07.0 7 GPM</p> <p>08.0 8 GPM</p> <p>09.0 9 GPM</p> <p>10.0 10 GPM</p> <p>± 15%</p>
---	---	--

WARNING: the specifications/application data shown in our catalogs and data sheets are intended only as a general guide for the product described (herein). Any specific application should not be undertaken without independent study, evaluation, and testing for suitability.