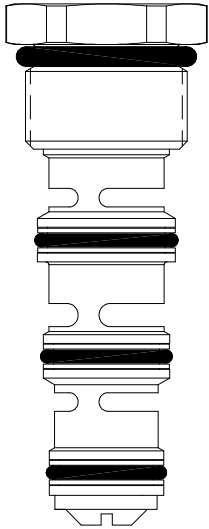


DG-FDA FLOW DIVIDER / COMBINER VALVE, SPOOL TYPE

DESCRIPTION

10 size, 7/8-14 thread "Delta Series", spool type, flow divider/combiner.

OPERATION

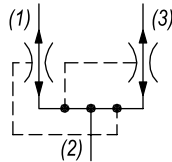
In the dividing mode, the DG-FDA will divert input flow from port (2) to ports (3) and (1), based on the ratio specified, regardless of operating pressure. The DG-FDA will combine input flows from ports (3) and (1), to port (2) by the same ratio. Should circuit operation result in a blockage of either (3) or (1), the opposite port may also close under certain conditions. Should this potential exist, consult the factory.

FEATURES

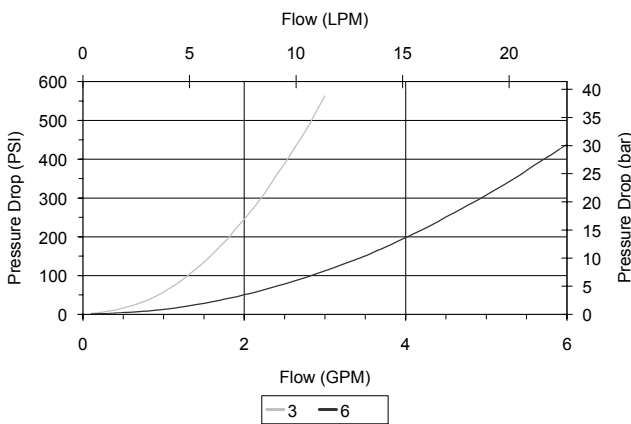
- Hardened parts for long life.
- Industry common cavity.



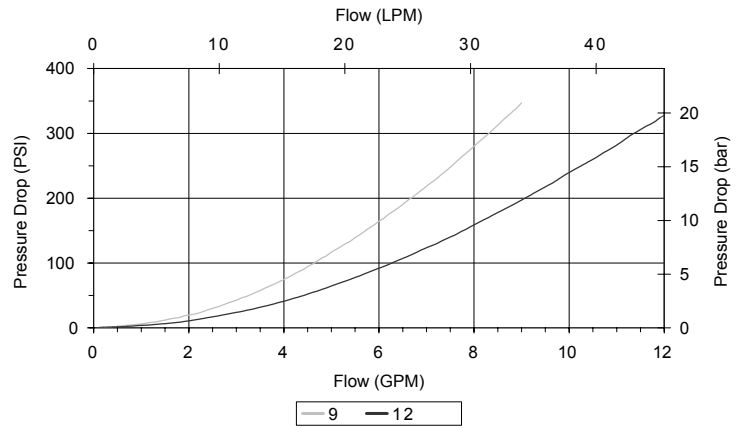
DO NOT EXCEED MAXIMUM FLOW PER MODEL
For higher accuracy flow ratio, use DG-FDH.

HYDRAULIC SYMBOL

PERFORMANCE

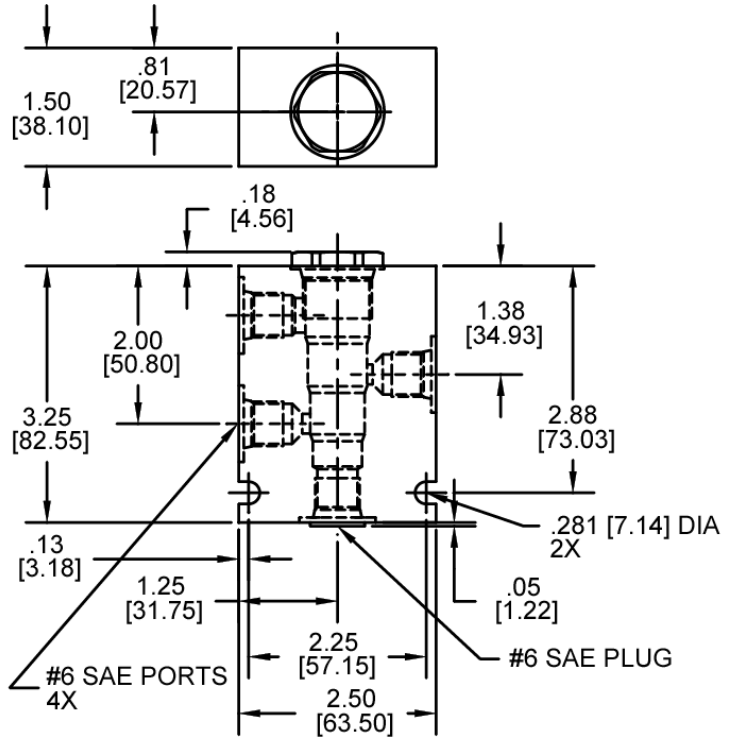
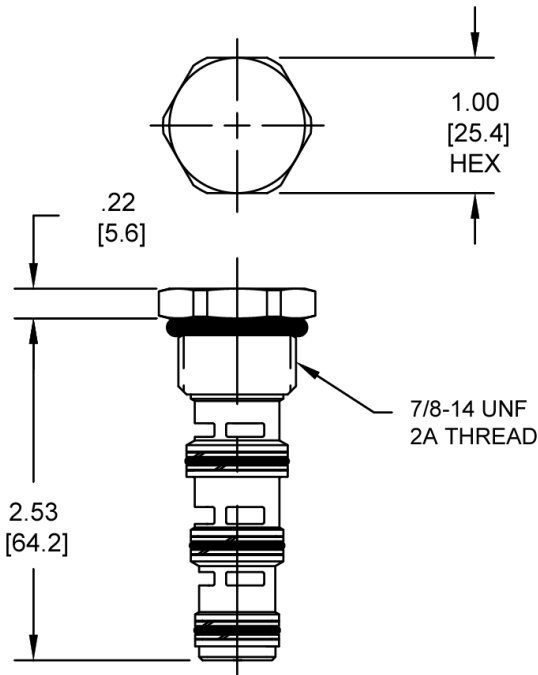
Actual Test Data (Cartridge Only)


VALVE SPECIFICATIONS

Maximum Flow	12 GPM (45 LPM)
Accuracy on Flow Splits	±10% of Max Rated Inlet Flow
Maximum Operating Pressure	3500 PSI (241 bar)
Viscosity Range	36 to 3000 SSU (3 to 647 cSt)
Filtration	ISO 18/16/13
Media Operating Temp. Range	-40° to 250°F (-40° to 120°C)
Weight	.21 lbs (.10 kg)
Operating Fluid Media	General Purpose Hydraulic Fluid
Cartridge Torque Requirements	30 ft-lbs (40.6 Nm)
Cavity	DELTA 4W
Cavity Form Tool (Finishing)	40500002
Seal Kit	21191214



DIMENSIONS



Body Weight: .99 lbs (.45 kg)

ORDERING INFORMATION

DG-FDA - - - - -

<p>OPTIONS</p> <p>Buna Standard 00</p> <p>Viton Standard V0</p>	<p>BODIES</p> <p>Blank Without Body</p> <p>N 1/4 NPT Ports</p> <p>S #6 SAE Ports</p> <p>Note: must use 4-way body</p>
--	--

SPLITS

#1	#3	
14-86		14
20-80		20
28-72		28
30-70		30
36-64		36
40-60		40
50-50		50
60-40		60
64-36		64
70-30		70
72-28		72
80-20		80
86-14		86

INLET FLOW

03	2-3 GPM (50 only)
06	3-6 GPM (50 only)
09	6-9 GPM (50 only)
12	9-12 GPM (50 only)
**	All non 50-50 split valves (see chart below for flow ratings)

Maximum inlet flow for non 50-50 split valves	
Model code	Maximum inlet flow
30-70, 70-30	4.0 GPM
20-80, 80-20	6.0 GPM
14-86, 36-64, 64-36, 86-14	7.0 GPM
28-72, 72-28	9.0 GPM
40-60, 60-40	10.0 GPM

Consult factory for additional splits

WARNING: the specifications/application data shown in our catalogs and data sheets are intended only as a general guide for the product described (herein). Any specific application should not be undertaken without independent study, evaluation, and testing for suitability.