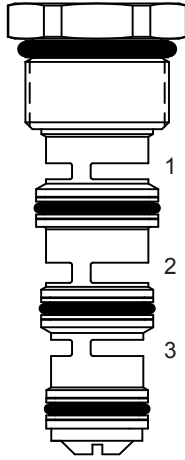


**DG-FDH FLOW DIVIDER / COMBINER VALVE, SPOOL TYPE**

**DESCRIPTION**

“High Accuracy” 10 size, 7/8-14 thread “Delta Series”, spool type, flow divider/combiner.



**OPERATION**

In the dividing mode, the DG-FDH will divert input flow from port (2) to ports (3) and (1), based on the ratio specified with a high degree of accuracy, regardless of operating pressure. The DG-FDH will combine input flows from ports (3) and (1), to port (2) by the same ratio. Should circuit operation result in a blockage of either (3) or (1), the opposite port may also close under certain conditions. Should this potential exist, consult the factory.

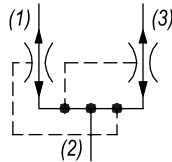
**FEATURES**

- Hardened parts for long life.
- Industry common cavity.



*DO NOT EXCEED MAXIMUM FLOW PER MODEL. The DG-FDH should be considered if the DG-FDA does not provide the required accuracy.*

**HYDRAULIC SYMBOL**

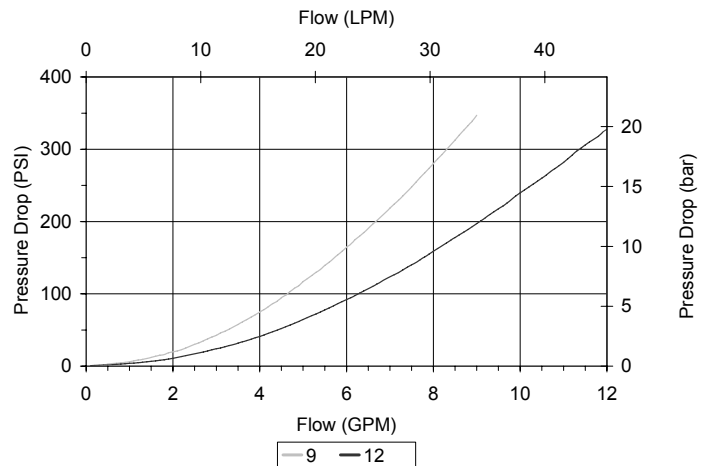
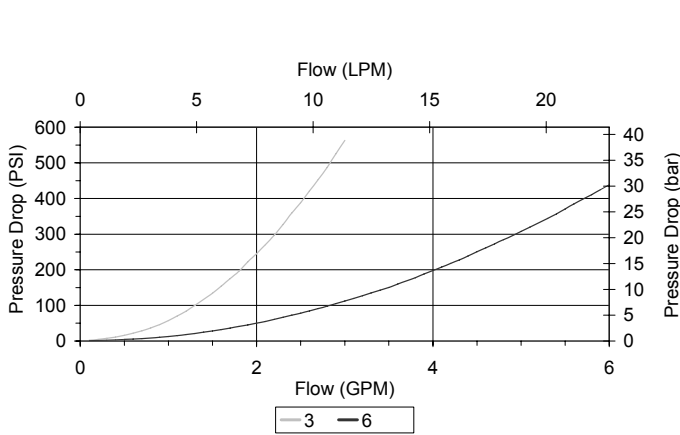


**PERFORMANCE**

Actual Test Data (Cartridge Only)

**VALVE SPECIFICATIONS**

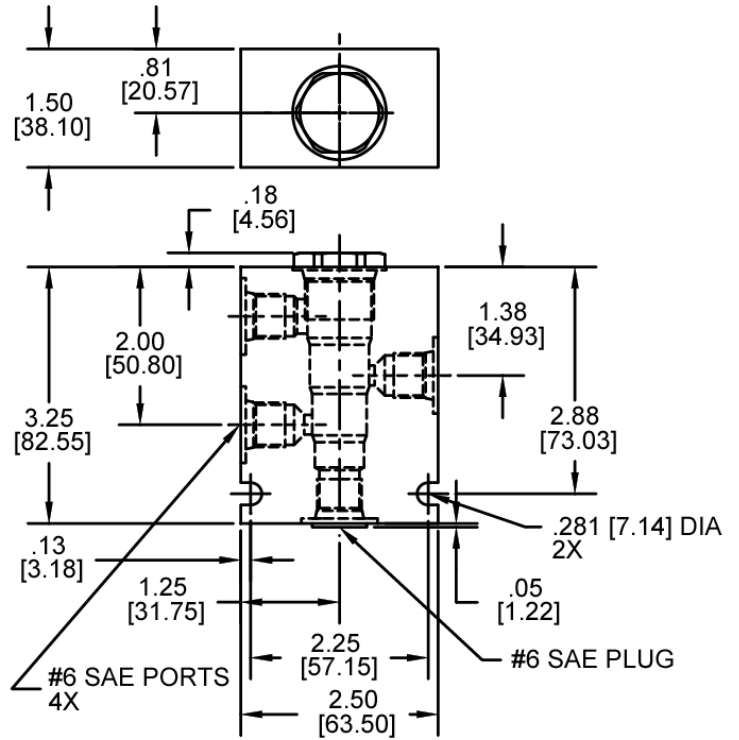
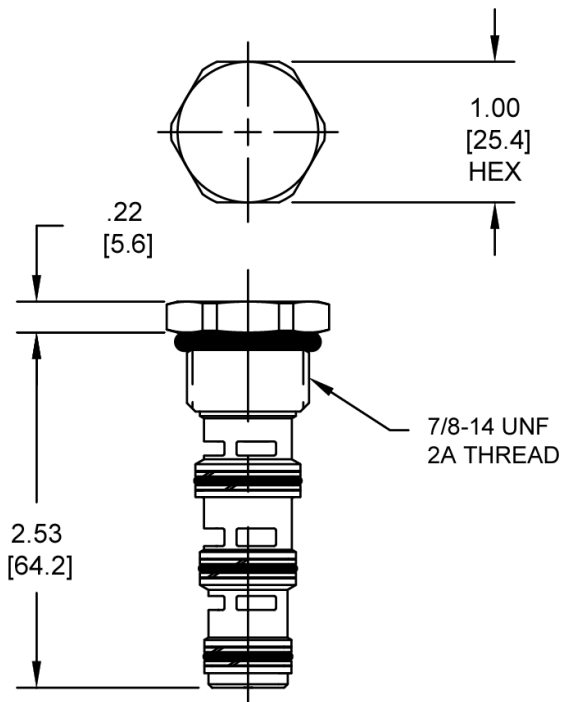
Maximum Flow	12 GPM (45 LPM)
Accuracy on Flow Splits	±4% of Max Rated Inlet Flow
Maximum Operating Pressure	3500 PSI (241 bar)
Viscosity Range	36 to 3000 SSU (3 to 647 cSt)
Filtration	ISO 18/16/13
Media Operating Temp. Range	-40° to 250°F (-40° to 120°C)
Weight	.21 lbs (.10 kg)
Operating Fluid Media	General Purpose Hydraulic Fluid
Cartridge Torque Requirements	30 ft-lbs (40.6 Nm)
Cavity	DELTA 4W
Cavity Form Tool (Finishing)	40500002
Seal Kit	21191214



W.51 / 12-2022

**WARNING:** the specifications/application data shown in our catalogs and data sheets are intended only as a general guide for the product described (herein). Any specific application should not be undertaken without independent study, evaluation, and testing for suitability.

**DIMENSIONS**



Body Weight: .99 lbs (.45 kg)

**ORDERING INFORMATION**

<b>DG-FDH</b> -		-	-	-	-	-
<b>OPTIONS</b>						
Buna Standard	<b>00</b>					
Viton Standard	<b>V0</b>					
<b>SPLITS</b>						
50-50	<b>50</b>					
Consult factory for splits other than 50-50						
<b>INLET FLOW</b>						
	<b>03</b>	2-3 GPM				
	<b>06</b>	3-6 GPM				
	<b>09</b>	6-9 GPM				
	<b>12</b>	9-12 GPM				
<b>BODIES</b>						
Blank		Without Body				
<b>N</b>		1/4" NPT Ports				
<b>S</b>		#6 SAE Ports				
		<b>Note: must use 4-way body</b>				

**WARNING:** the specifications/application data shown in our catalogs and data sheets are intended only as a general guide for the product described (herein). Any specific application should not be undertaken without independent study, evaluation, and testing for suitability.