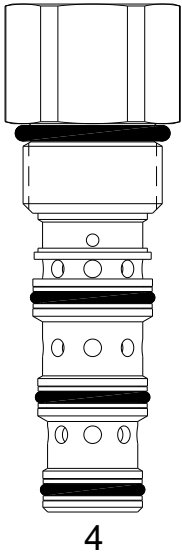


DG-PDS STEERING PRIORITY FLOW CONTROL VALVE WITH STATIC LOAD SENSE

DESCRIPTION

10 size, 7/8-14 thread, "Delta" series, steering priority flow control valve with static load sense.

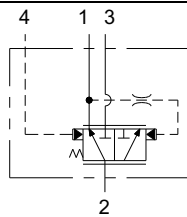
OPERATION

The DG-PDS allows priority flow from (2) to (1) regardless of load pressure at either port (1) or port (3). Excess flow bypasses out (3).

Port (4) is the load sense port.

FEATURES

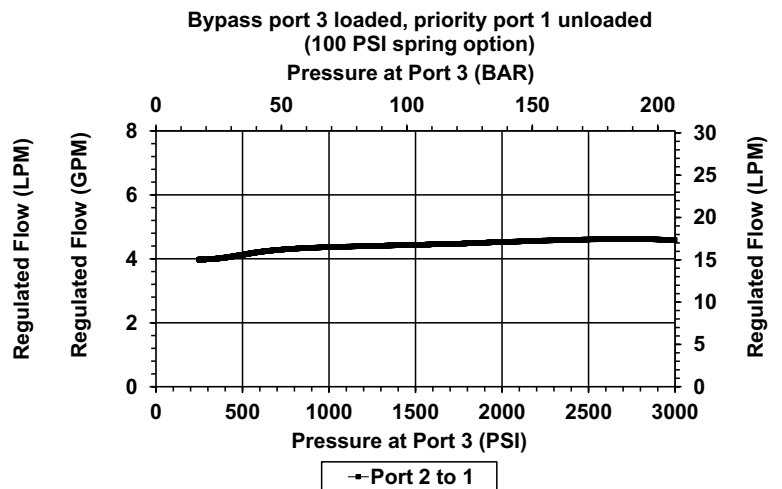
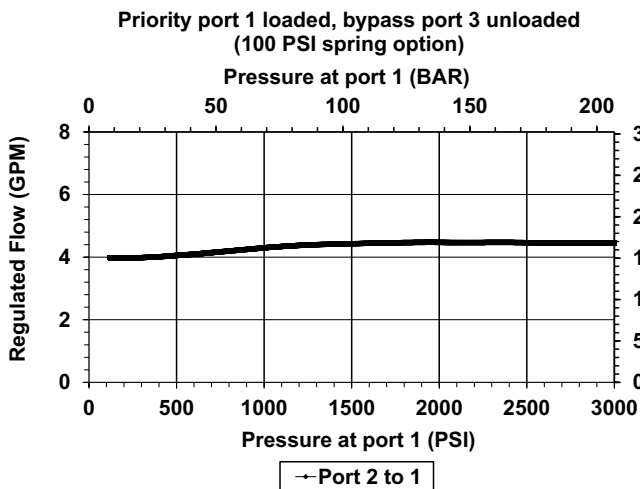
- Hardened cage and spool for long life.
- Industry common cavity.

HYDRAULIC SYMBOL

VALVE SPECIFICATIONS

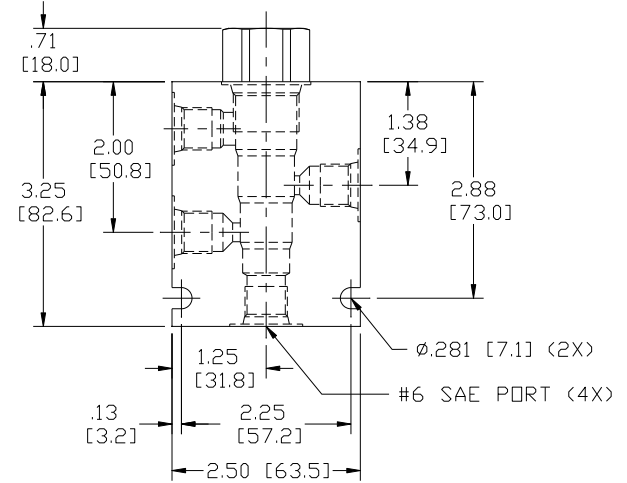
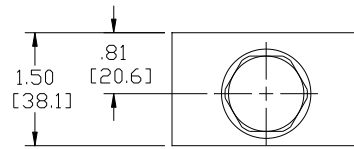
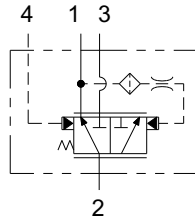
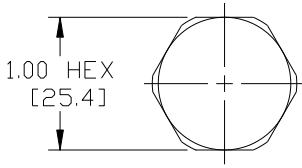
Max Regulated Flow	9 GPM (34 LPM)
Rated Operating Pressure	3000 PSI (207 bar)
Viscosity Range	36 to 3000 SSU (3 to 647 cSt)
Filtration	ISO 18/16/13
Media Operating Temperature Range	-40° to 250° F (-40° to 120° C)
Weight	0.38 lbs. (0.17 kg)
Operating Fluid Media	General Purpose Hydraulic Fluid
Cartridge Torque Requirements	30 ft-lbs (40.6 Nm)
Cavity	DELTA 4W
Cavity Form Tool (Finishing)	40500002
Seal Kit	21191214

PERFORMANCE

Actual Test Data (Cartridge Only)



DIMENSIONS



BODY WEIGHT: .99 lbs [.45 kg]

ORDERING INFORMATION

DG-PDS

OPTIONS					BODIES
Buna Standard	00				Blank
Viton Standard	V0				N 3/4 NPTF Ports
Buna Standard, Screen	A0				S #12 SAE Ports
Viton Standard, Screen	W0				
*Optional screen protects internal pilot orifice(s)					PRESSURE SETTING
			0100		100 PSI
			0150		150 PSI
			0250		250 PSI

WARNING: the specifications/application data shown in our catalogs and data sheets are intended only as a general guide for the product described (herein). Any specific application should not be undertaken without independent study, evaluation, and testing for suitability.