

HDF-FAP FULLY ADJUSTABLE PIRORITY FLOW CONTROL VALVE WITH BYPASS

DESCRIPTION

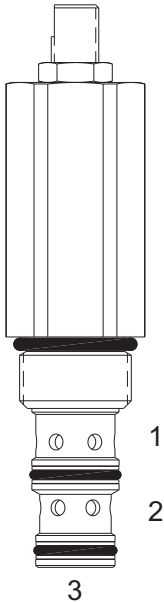
"High pressure" 10 size, 7/8-14 thread, "Delta" series, fully adjustable priority flow control valve with bypass

OPERATION

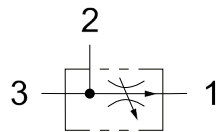
The HDF-FAP allows pressure compensated flow from (3) to (1), regulated by the pressure present at (3). Excess flow bypasses out (2). Can be used as a restrictive pressure compensated flow control when the bypass port (2) is blocked.

FEATURES

- Hardened cage and spool for long life.
- Industry common cavity.



HYDRAULIC SYMBOL



VALVE SPECIFICATIONS

Maximum Regulated Flow	10 GPM (38 LPM)
Rated Operating Pressure	4200 PSI (290 BAR)
Viscosity Range	36 to 3000 SSU (3 to 647 cSt)
Filtration	ISO 18/16/13
Media Operating Temperature Range	-40° to 250° F (-40° to 120° C)
Weight	0.49 lbs. (0.22 kg)
Operating Fluid Media	General Purpose Hydraulic Fluid
Cartridge Torque Requirements	40 ft-lbs (54 Nm)
Cavity	DELTA 3W
Cavity Form Tool (Finishing)	40500001
Seal Kit	21191210

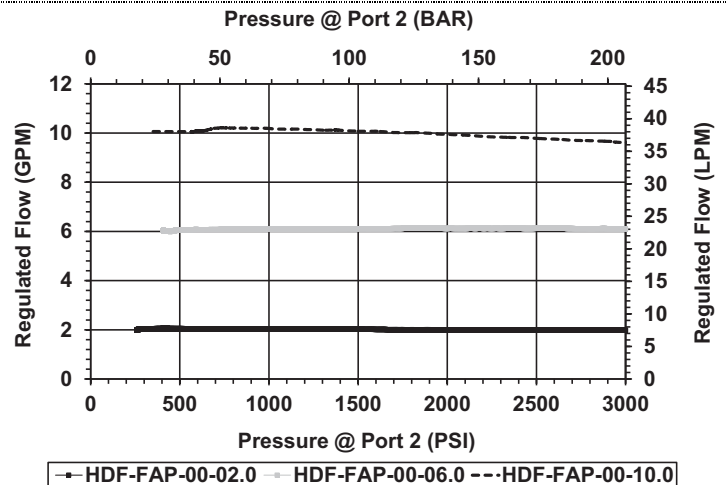
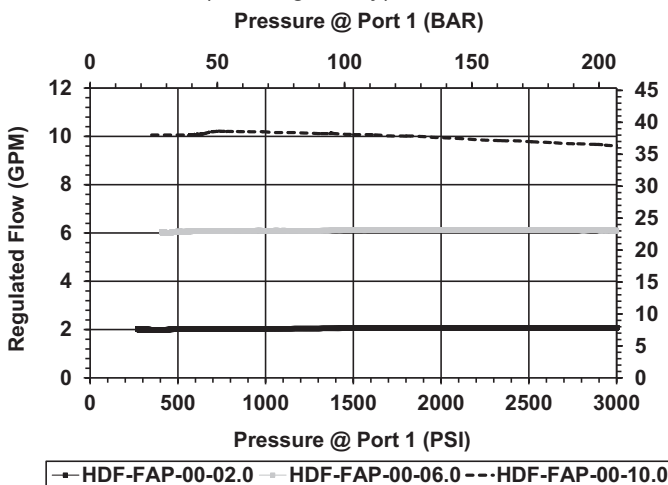


When used as a bypass flow control in applications where the priority flow port will be blocked by external valving, bypass pressure drop will increase unless a small amount of leakage is provided for the priority port. Consult factory.

For lower flows/pressure drop or fine adjustment, see DF-FAP.

PERFORMANCE

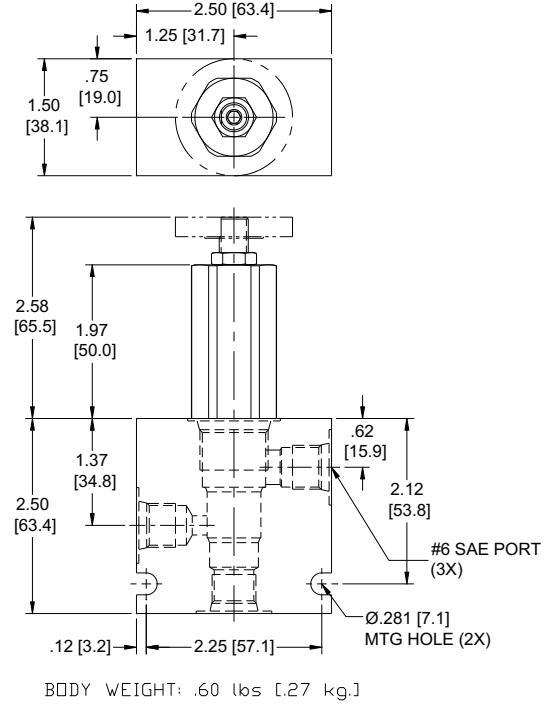
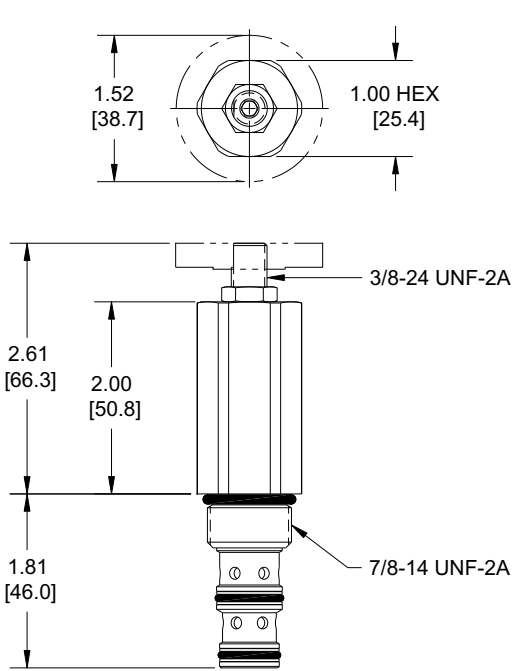
Actual Test Data (Cartridge Only)



W51/2-2023

WARNING: the specifications/application data shown in our catalogs and data sheets are intended only as a general guide for the product described (herein). Any specific application should not be undertaken without independent study, evaluation, and testing for suitability.

DIMENSIONS



ORDERING INFORMATION

HDF-FAP

OPTIONS
 Buna, Standard **00**
 Viton, Standard **V0**
 Buna, Knob **0K**
 Viton, Knob **VK**

BODIES
 Blank Without Body
 N 3/4 NPTF Ports
 S #12 SAE Ports

Note: Aluminum **NOT** durability rated for 4200 PSI. Consult factory for body options.

SETTING (IF REQUIRED) 0 to maximum at 0.1 increments are factory available

Blank = NOT FACTORY PRE-SET

Example: 0000 = 0 GPM
 04.0 = 4.0 GPM
 09.5 = 9.5 GPM

STD. FLOW RANGES

Blank 0 - 10 GPM - Full flow range

WARNING: the specifications/application data shown in our catalogs and data sheets are intended only as a general guide for the product described (herein). Any specific application should not be undertaken without independent study, evaluation, and testing for suitability.