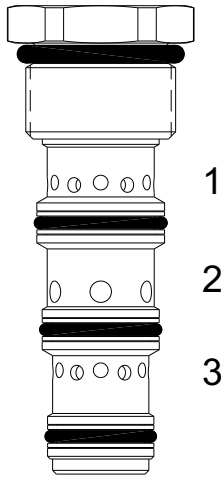


HDG-FDB FLOW DIVIDER VALVE, SPOOL TYPE

DESCRIPTION

"High Pressure" 10 size, high pressure, 7/8-14 thread "Delta Series", spool type, flow divider.

OPERATION

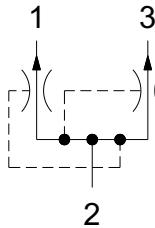
The HDG-FDB will divert input flow from port (2) to ports (3) and (1), based on the ratio specified, regardless of operating pressure.

FEATURES

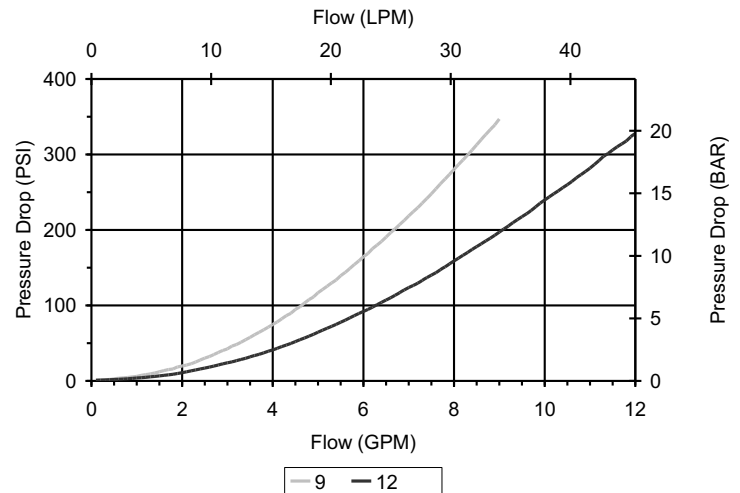
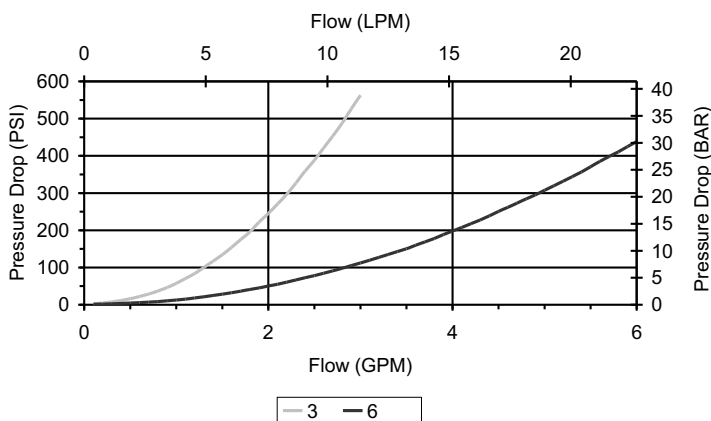
- Hardened parts for long life.
- Industry common cavity.

VALVE SPECIFICATIONS

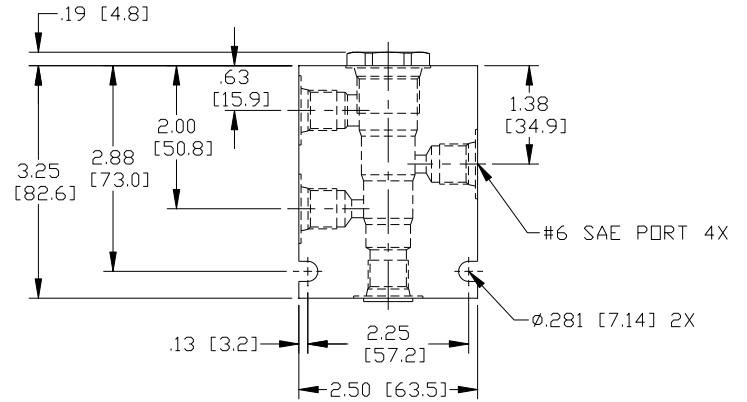
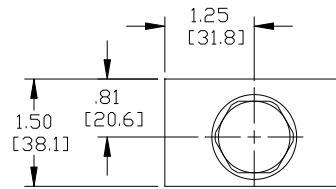
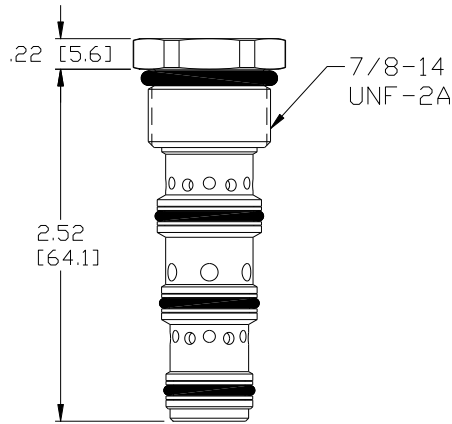
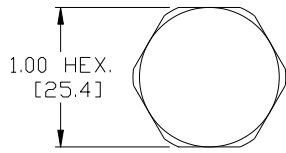
Maximum Flow	12 GPM (45 LPM)
Accuracy on Flow Splits	+/- 10% of Max. Rated Inlet Flow
Maximum Operating Pressure	4200 PSI (290 bar)
Viscosity Range	36 to 3000 SSU (3 to 647 cSt)
Filtration	ISO 18/16/13
Media Operating Temperature Range	-40° to 250° F (-40° to 120° C)
Weight	0.21 lbs. (0.10 kg)
Operating Fluid Media	General Purpose Hydraulic Fluid
Cartridge Torque Requirements	40 ft-lbs (54 Nm)
Cavity	DELTA 4W
Cavity Form Tool (Finishing)	40500002
Seal Kit	21191214

HYDRAULIC SYMBOL

PERFORMANCE

Actual Test Data (Cartridge Only)



DIMENSIONS



BODY WEIGHT: .99 Lbs [0.45 Kg]

ORDERING INFORMATION

HDG-FDB

OPTIONS
 Buna Standard **00**
 Viton Standard **0V**

SPLITS 50 50-50

*Consult factory for Splits
 Other than 50 - 50

BODIES
 Blank
N 1/4 NPT Ports
S #6 SAE Ports

Note: Aluminum **NOT** durability rated for 4200 PSI. Consult factory for body options.
NOTE: Must Use 4-Way Body

INLET FLOW

03 2-3 GPM
06 3-6 GPM
09 6-9 GPM
12 9-12 GPM

WARNING: the specifications/application data shown in our catalogs and data sheets are intended only as a general guide for the product described (herein). Any specific application should not be undertaken without independent study, evaluation, and testing for suitability.