

**HSJ-NVA ADJUSTABLE FLOW CONTROL VALVE, NEEDLE TYPE**
**DESCRIPTION**

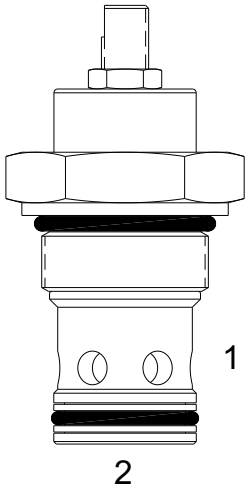
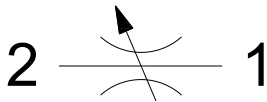
"High Pressure" 16 size, 1 5/16-12 thread, "Sixteen" series, needle flow control valve.

**OPERATION**

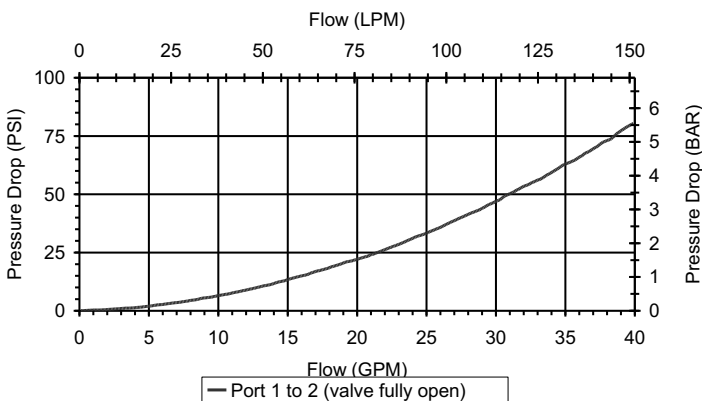
The HSJ-NVA adjusts from fully open to fully closed by turning the adjustment screw clockwise. When adjusted open the valves regulates flow (1) to (2) or (2) to (1). When fully closed the valve blocks flow from (1) to (2) or (2) to (1).

**FEATURES**

- Hardened parts for long life.
- Industry common cavity.

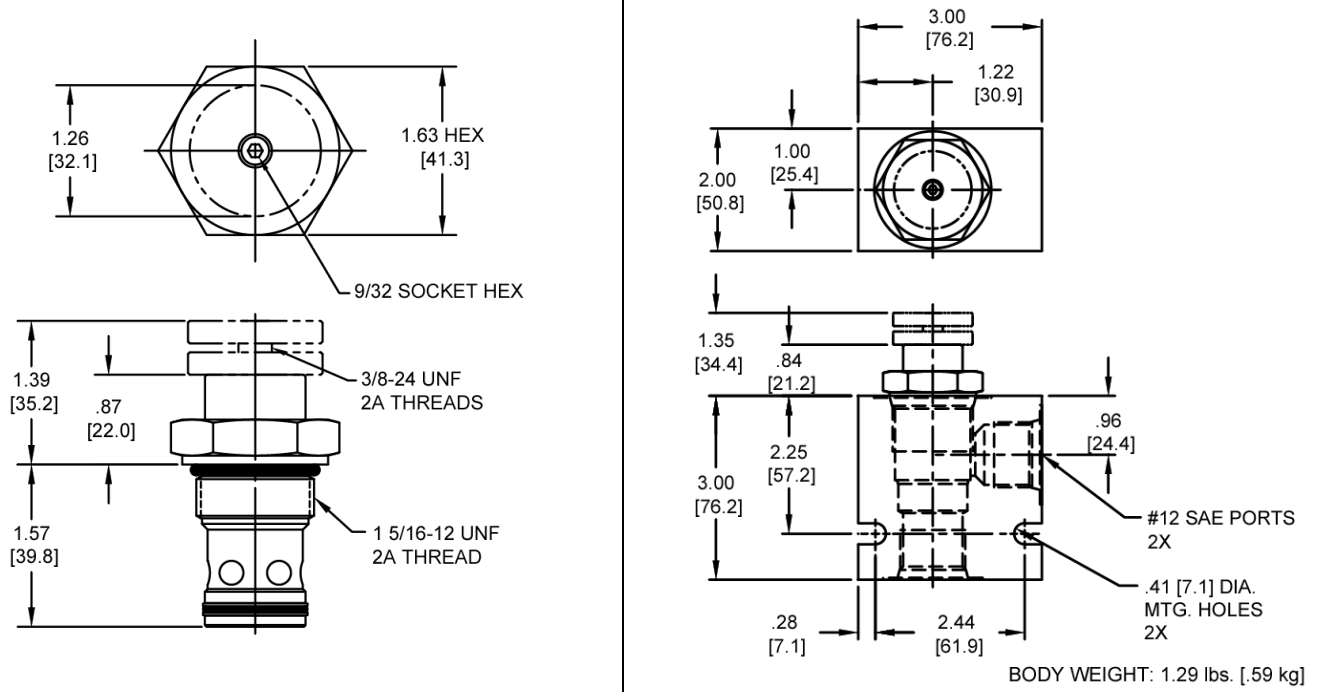

**HYDRAULIC SYMBOL**

**PERFORMANCE**

Actual Test Data (Cartridge Only)


**VALVE SPECIFICATIONS**

Nominal Flow	40 GPM (151 LPM)
Rated Operating Pressure	4200 PSI (290 bar)
Viscosity Range	36 to 3000 SSU (3 to 647 cSt)
Filtration	ISO 18/16/13
Media Operating Temperature Range	-35° to 200° F (-37.2° to 93.3° C)
Weight	0.83 lbs. (0.37 kg)
Operating Fluid Media	General Purpose Hydraulic Fluid
Cartridge Torque Requirements	115 ft-lbs (156 Nm)
Cavity	<a href="#">SIXTEEN 2W</a>
Cavity Form Tool (Finishing)	40500017
Seal Kit	21191402

**DIMENSIONS**



**ORDERING INFORMATION**

<b>HSJ-NVA</b> - - -			
<b>OPTIONS</b>			<b>BODIES</b>
Buna Standard	<b>00</b>	Blank	Without Body
Viton Standard	<b>V0</b>	N	3/4 NPT Ports
Buna, Knob	<b>OK</b>	S	# 12 SAE Ports
Viton, Knob	<b>VK</b>		

**WARNING:** the specifications/application data shown in our catalogs and data sheets are intended only as a general guide for the product described (herein). Any specific application should not be undertaken without independent study, evaluation, and testing for suitability.