

HSL-PLA SIXTEEN SERIES, LOGIC VALVE

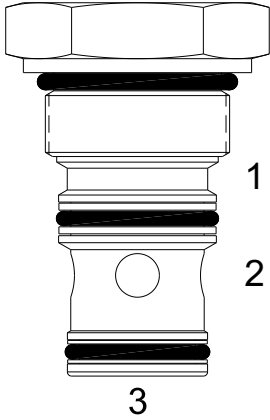
DESCRIPTION

“High Pressure” 16 size, 1 5/16-12 thread, “Sixteen” series, logic valve

OPERATION

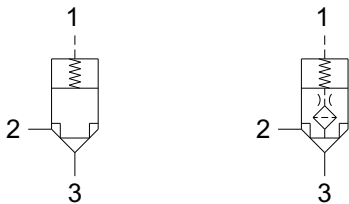
The HSL-PLA can be configured as a piloted or vented directional flow control valve. The pilot-to-close configuration allows flow from port 3 to port 2 or from port 2 to Port 3 until a pilot signal is applied to port 1, at which point the poppet shifts closed and blocks flow. The vent-to-open configuration blocks flow from port 3 to port 2 or Port 2 to Port 3 until port 1 is vented to tank and the pressure drop across the internal orifice exceeds the spring pressure, at which point the valve shifts open and allows flow.

The crack pressure settings equate to pressure level only at Port 3 to allow opening. Added pressure at Port 2 will reduce this setting. (See Seat Ratio). The crack pressure settings with pressure level only at Port 2 will be roughly 5 times the spring option value listed at which point the **poppet** shifts open and allows flow.



HYDRAULIC SYMBOL

PILOT TO CLOSE VENT TO OPEN



FEATURES

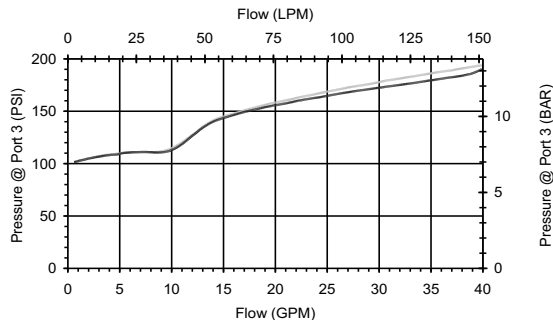
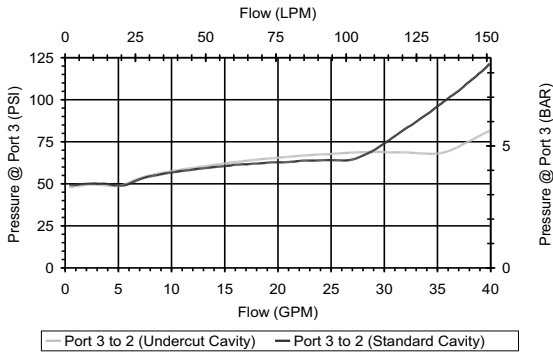
- Hardened parts for long life.
- Industry common cavity.



For bi-directional applications see HSL-CPD.

PERFORMANCE

Actual Test Data (Cartridge Only)

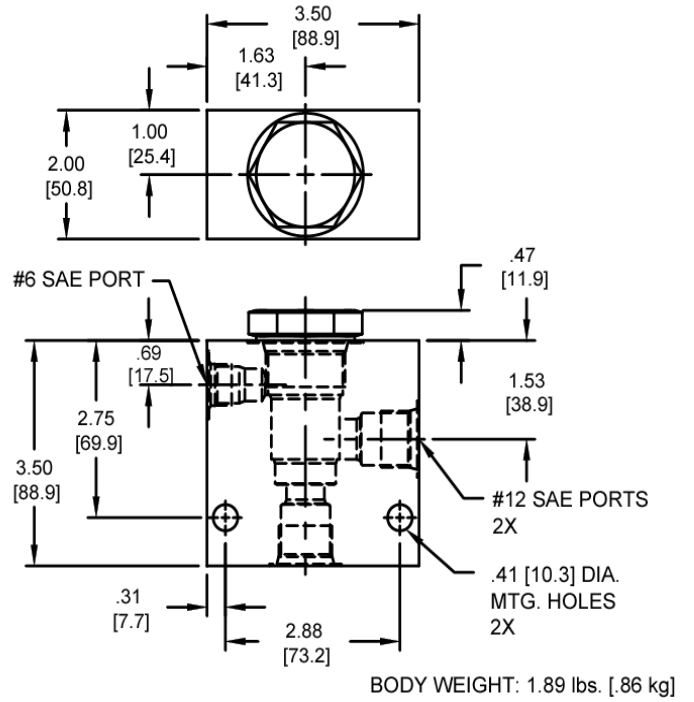
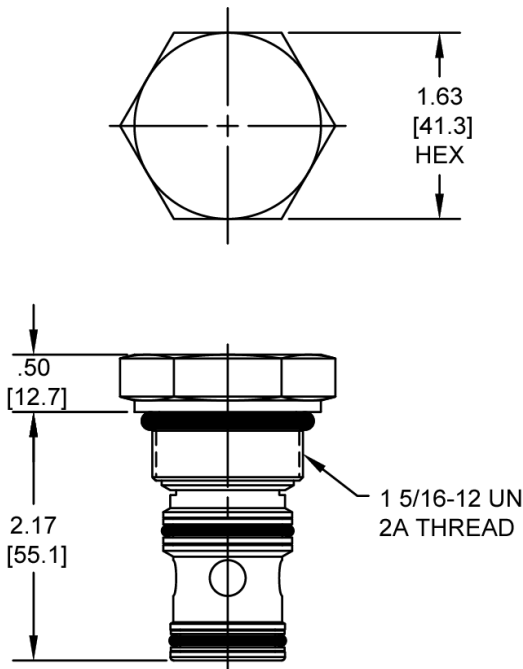


VALVE SPECIFICATIONS

Nominal Flow	40 GPM (151 LPM)
Rated Operating Pressure	4200 PSI (290 bar)
Viscosity Range	36 to 3000 SSU (3 to 647 cSt)
Filtration	ISO 18/16/13
Media Operating Temperature Range	-40° to 250° F (-40° to 120° C)
Weight	0.69 lbs. (0.31 kg)
Operating Fluid Media	General Purpose Hydraulic Fluid
Cartridge Torque Requirements	115 ft-lbs. (156 Nm)
Cavity	SIXTEEN 3WS
Cavity Form Tool (Finishing)	40500021
Seal Kit	21191409
Seat Ratio	Area of the pilot is 1.2 times the area of the seat at Port 3.

WARNING: the specifications/application data shown in our catalogs and data sheets are intended only as a general guide for the product described (herein). Any specific application should not be undertaken without independent study, evaluation, and testing for suitability.

W51 / 2-2023

DIMENSIONS

ORDERING INFORMATION
HSL-PLA

OPTIONS					BODIES
Buna Pilot to Close	0P				Without Body
Buna Vent to Open	0V			Blank	#12 SAE Ports
Viton Pilot to Close	VP			S	
Viton Vent to Open	VV				
Buna Pilot to Close w/seals	0B				
Buna Vent to Open w/seals	0C	0100			PRESSURE SETTING
Viton Pilot to Close w/seals	VB	0150			100 PSI
Viton Vent to Open w/seals	VC				150 PSI

Note: Aluminum **NOT** durability rated for 4200 PSI. Consult factory for body options.

WARNING: the specifications/application data shown in our catalogs and data sheets are intended only as a general guide for the product described (herein). Any specific application should not be undertaken without independent study, evaluation, and testing for suitability.