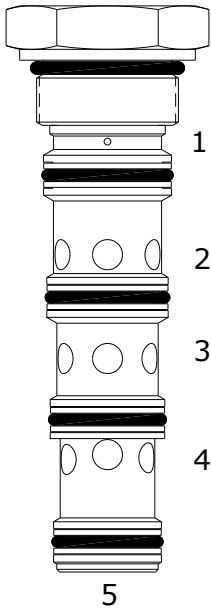


HSO-PDS PRIORITY COMPENSATING VALVE WITH BYPASS (STATIC LOAD SENSE)



“High pressure” 16 size, 1 5/16-12 thread, “Sixteen” series, priority compensating valve with bypass. (static load sense).

OPERATION

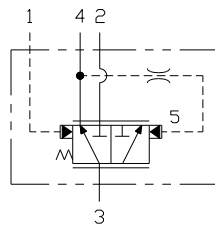
The HSO-PDS allows priority flow from (3) to (4) regardless of load pressure at either port (2) or port (4). Excess flow bypasses out (2) when the orifice it is sensing on priority leg is satisfied.

Port (1) is the load sense port.

FEATURES

- Hardened cage and spool for long life.
- Industry common cavity.

HYDRAULIC SYMBOL



VALVE SPECIFICATIONS

Max Regulated Flow	20 GPM (76 LPM)
Rated Operating Pressure	4200 PSI (290 bar)
Typical Internal Leakage (150 SSU)	30 cu in/min (0.5 LPM)
Viscosity Range	36 to 3000 SSU (3 to 647 cSt)
Filtration	ISO 18/16/13
Media Operating Temperature Range	-40° to 250° F (-40° to 120° C)
Weight	1.05 lbs. (0.48 kg)
Operating Fluid Media	General Purpose Hydraulic Fluid
Cartridge Torque Requirements	90 ft-lbs (122 Nm)
Cavity	SIXTEEN 5W SHORT
Cavity Form Tool (Finishing)	40500020
Seal Kit	21191410

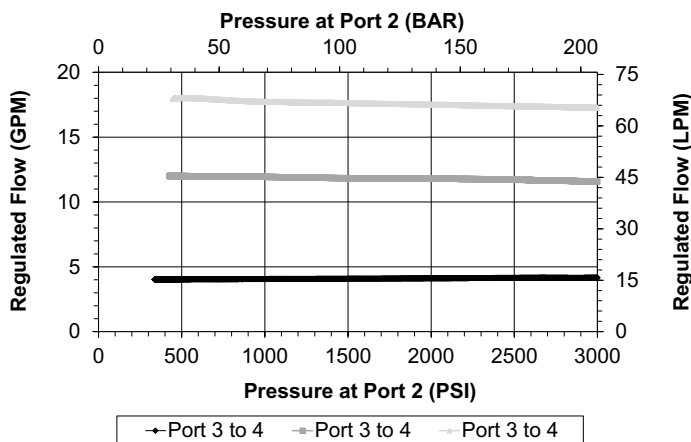


Do not use orifice disk under cartridge valve.

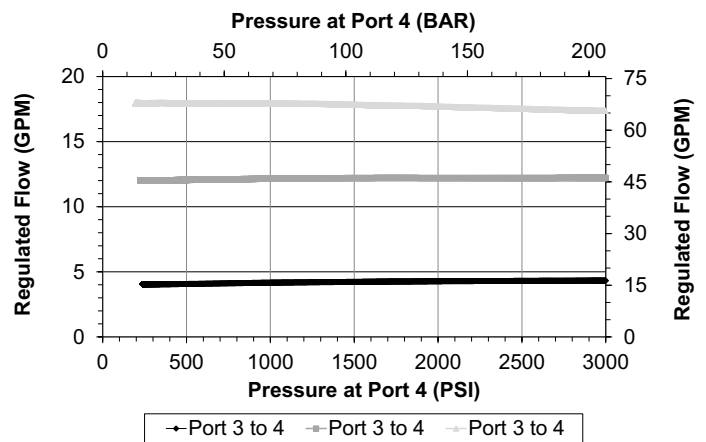
PERFORMANCE

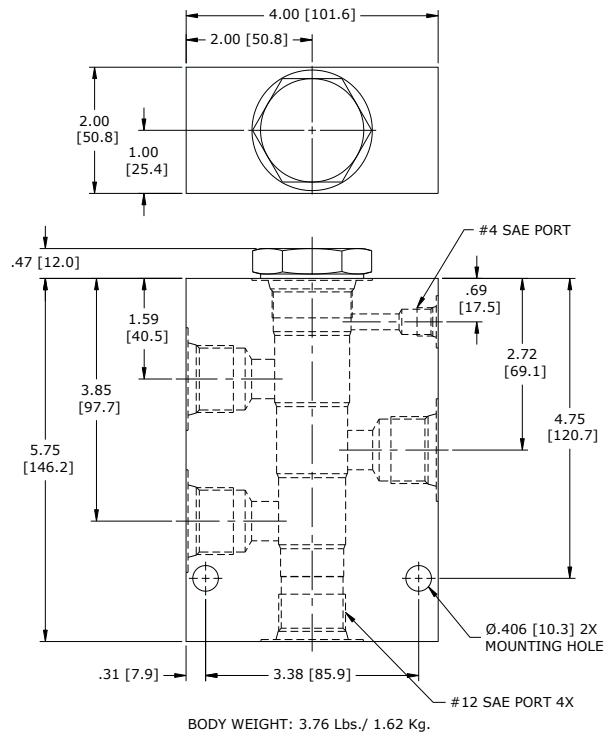
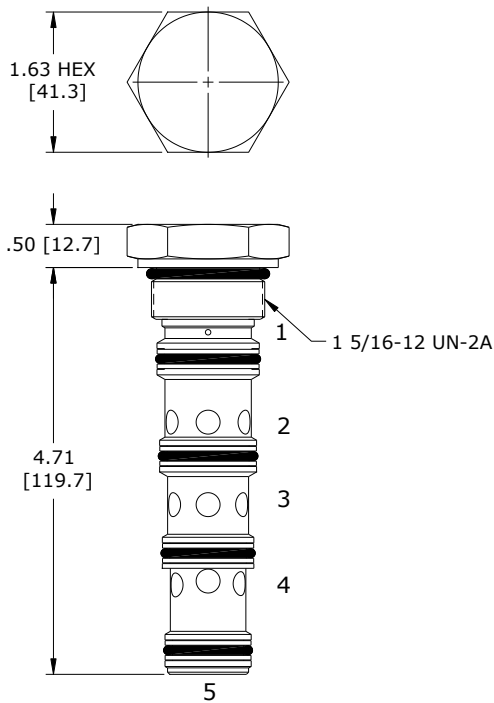
Actual Test Data (Cartridge Only)

Bypass port 2 loaded, priority port 4 unloaded



Priority port 4 loaded, bypass port 2 unloaded



DIMENSIONS

ORDERING INFORMATION

HSO-PDS -		-	-	-
OPTIONS				BODIES
Buna Standard	00			Blank
Viton Standard	V0			N 3/4 NPTF Ports
				S #12 SAE Ports
				PRESSURE SETTING
		0120		120 PSI
		0300		300 PSI

WARNING: the specifications/application data shown in our catalogs and data sheets are intended only as a general guide for the product described (herein). Any specific application should not be undertaken without independent study, evaluation, and testing for suitability.