

SK-FAP ADJUSTABLE PRIORITY FLOW CONTROL VALVE

DESCRIPTION

16 size, 1 5/16-12 thread, "Sixteen" series, fully adjustable priority flow control valve.

OPERATION

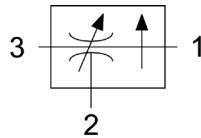
The SK-FAP allows pressure compensated flow from (3) to (1) regulated by the pressure present at (3). Excess flow bypasses out (2).

The spring chamber is constantly vented at (1).

FEATURES

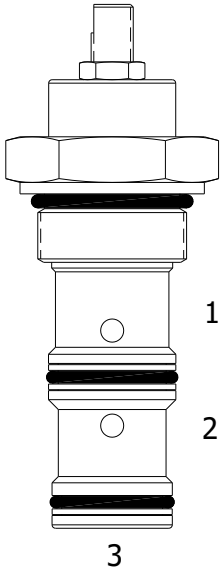
- Hardened cage and spool for long life.
- Industry common cavity.

HYDRAULIC SYMBOL



VALVE SPECIFICATIONS

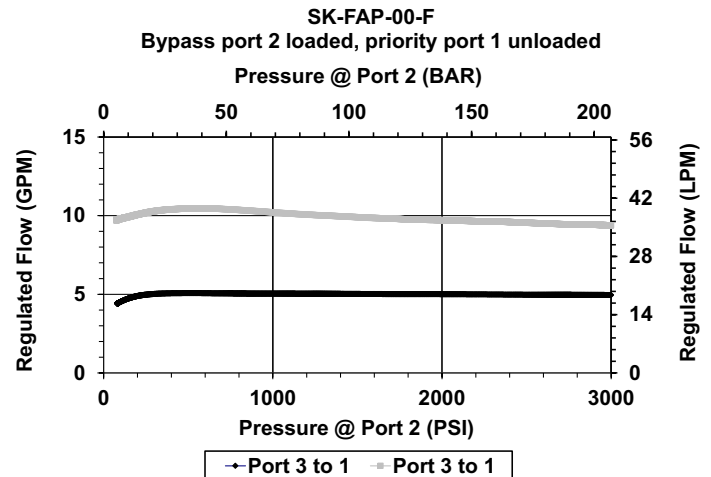
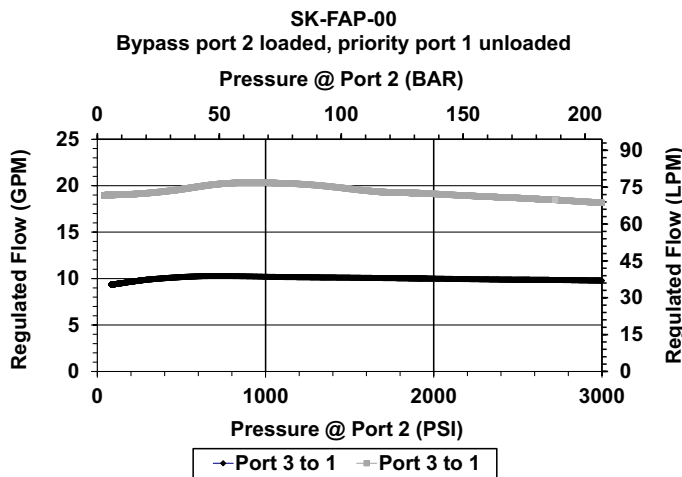
Max Regulated Flow	25 GPM (95 LPM)
Rated Operating Pressure	500-3000 PSI (34-207bar)
Viscosity Range	36 to 3000 SSU (3 to 647 cSt)
Filtration	ISO 18/16/13
Media Operating Temperature Range	-40° to 250° F (-40° to 120° C)
Weight	.96 lbs. (.44 kg)
Operating Fluid Media	General Purpose Hydraulic Fluid
Cartridge Torque Requirements	90 ft-lbs (122 Nm)
Cavity	SIXTEEN 3W
Cavity Form Tool (Finishing)	40500018
Seal Kit	21191404



When used as a bypass flow control in applications where the priority flow port will be blocked by external valving, bypass pressure drop will increase unless a small amount of leakage is provided for the priority port. Consult factory.

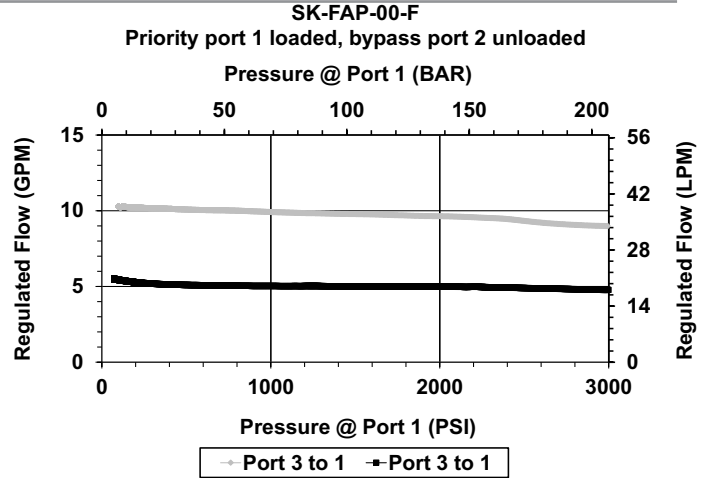
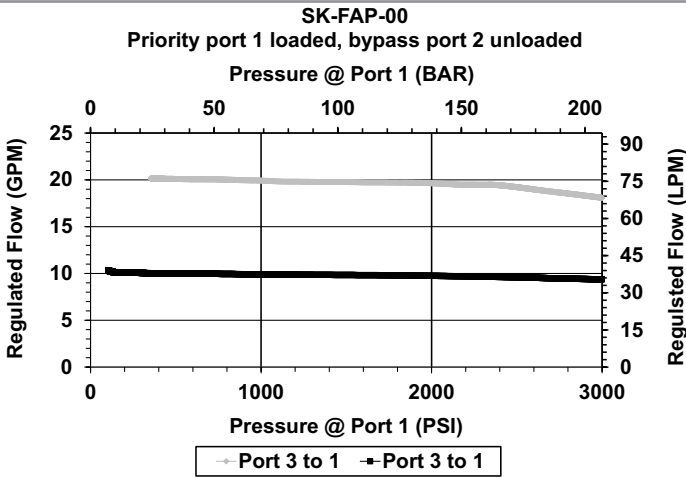
PERFORMANCE

Actual Test Data (Cartridge Only)

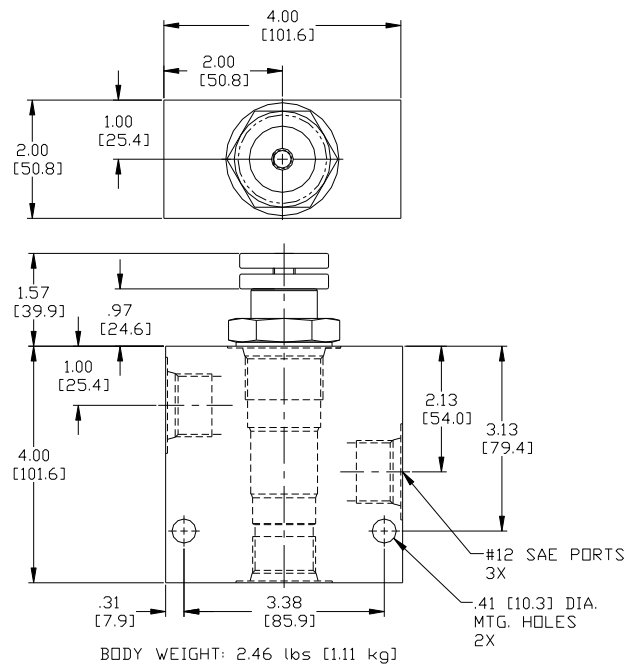
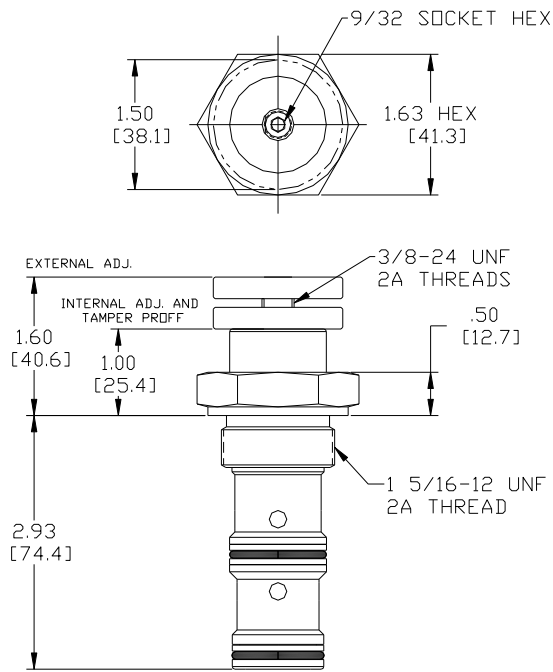


W51/2-2023

WARNING: the specifications/application data shown in our catalogs and data sheets are intended only as a general guide for the product described (herein). Any specific application should not be undertaken without independent study, evaluation, and testing for suitability.



DIMENSIONS



ORDERING INFORMATION

SK-FAP	-	-	-	-	-	-
OPTIONS						
Buna Standard	00					
Viton Standard	V0					
Buna, Knob	OK					
Viton, Knob	VK					
Internally Adj. Buna	OI					
Internally Adj. Viton	VI					
Tamper Proof Buna	OT					
Tamper Proof Viton	VT					
		Blank				
		F				

SETTING (IF REQUIRED) 1 GPM increments

Blank = NOT FACTORY PRESET

Example: 08.0 = 8.0 GPM setting
15.0 – 15.0 GPM setting

STD. FLOW RANGES

1 to 25 GPM - Full flow range
1 to 10 GPM - Fine adjust low flow range

BODIES

Blank - Without body
N - ¼ NPTF Ports
S - #12 SAE Ports

*Settings of 0 to 10 GPM will use 0-10 GPM model
*Settings over 10 GPM will use the 1-25 GPM model

WARNING: the specifications/application data shown in our catalogs and data sheets are intended only as a general guide for the product described (herein). Any specific application should not be undertaken without independent study, evaluation, and testing for suitability.