

**SK-FCQ ADJUSTABLE PRIORITY FLOW CONTROL VALVE**

**DESCRIPTION**

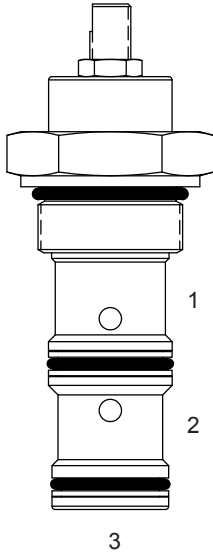
16 size, 1 5/16-12 thread, "Super" series, adjustable priority flow control valve.

**OPERATION**

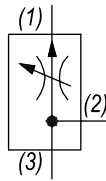
The SK-FCQ allows pressure compensated flow from (3) to (1) regulated by the pressure present at (3). Excess flow bypasses out (2). The spring chamber is constantly vented at (1).

**FEATURES**

- Hardened cage and spool for long life.
- Industry common cavity.

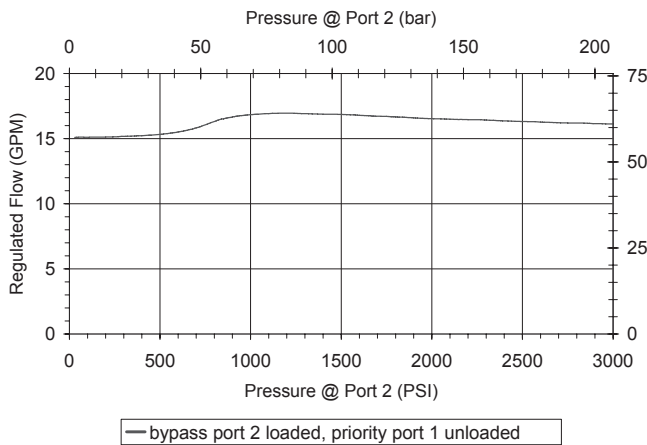


**HYDRAULIC SYMBOL**



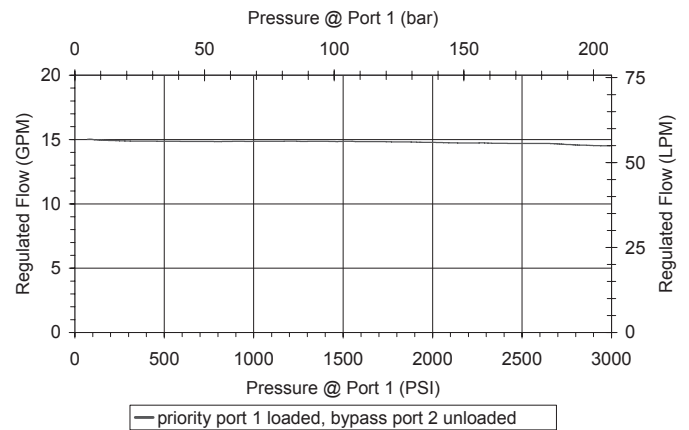
**PERFORMANCE**

Actual Test Data (Cartridge Only)

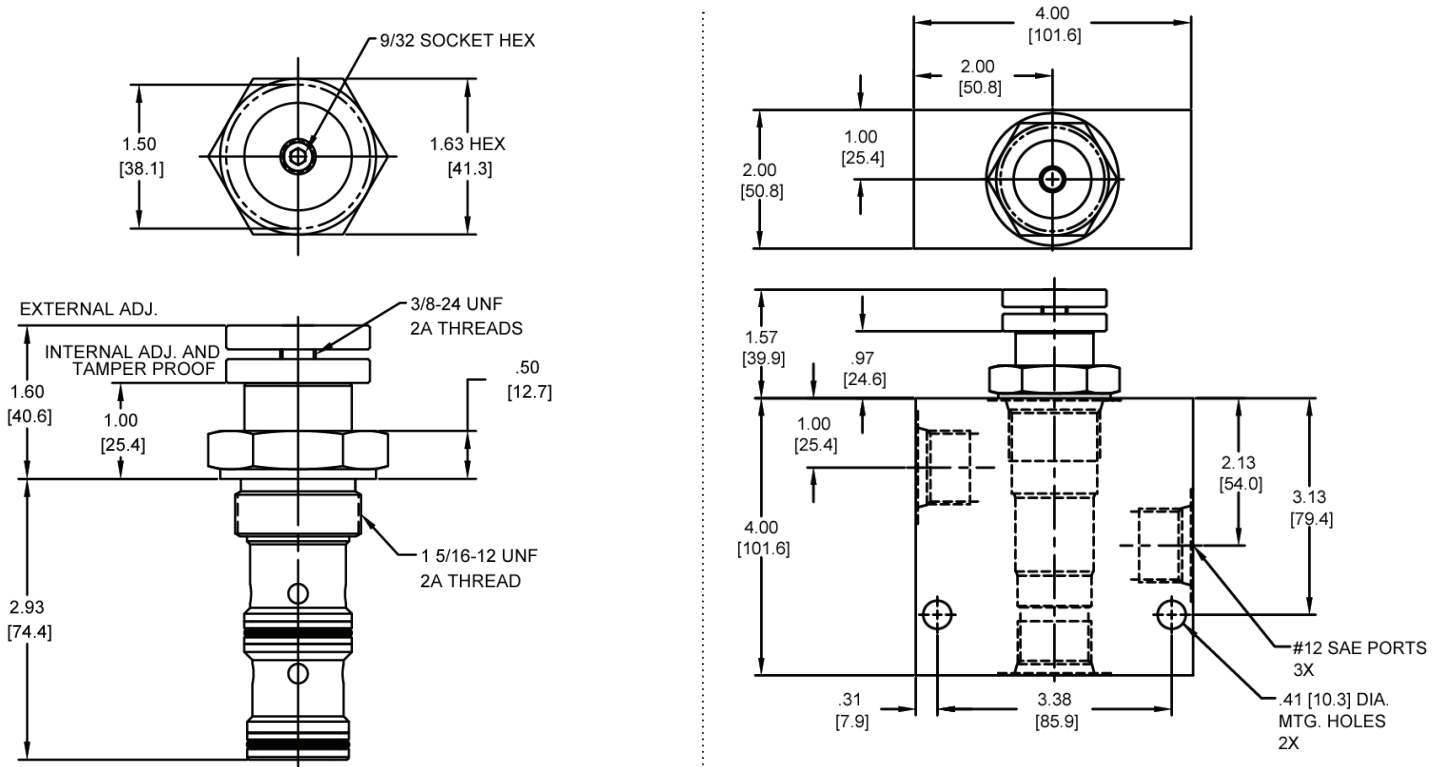


**VALVE SPECIFICATIONS**

Max Regulated Flow	25 GPM (95 LPM)
Rated Operating Pressure	500-3000 PSI (34-207 bar)
Viscosity Range	36 to 3000 SSU (3 to 647 cSt)
Filtration	ISO 18/16/13
Media Operating Temp. Range	-40° to 250°F (-40° to 120°C)
Weight	.96 lbs (.44 kg)
Operating Fluid Media	General Purpose Hydraulic Fluid
Cartridge Torque Requirements	90 ft-lbs (122 Nm)
Cavity	SUPER 3W
Cavity Form Tool (Finishing)	40500018
Seal Kit	21191404



**DIMENSIONS**



Body Weight: 2.46 lbs (1.11 kg)

**ORDERING INFORMATION**

<p><b>SK-FCQ</b> - - - -</p> <p><b>OPTIONS</b></p> <p>Buna Standard <b>00</b></p> <p>Viton Standard <b>V0</b></p> <p>Buna, Knob <b>0K</b></p> <p>Viton, Knob <b>VK</b></p> <p>Buna, Internally Adj. <b>0I</b></p> <p>Viton, Internally Adj. <b>VI</b></p> <p>Buna, Tamper Proof <b>0T</b></p> <p>Viton, Tamper Proof <b>VT</b></p>	<p><b>FLOW SETTING</b></p> <p><b>XXXX</b> 1 to 25 GPM</p> <p><b>Preset &amp; Tamper Proof</b></p> <p>Example: 0015 - 15 GPM ±10%</p>	<p><b>BODIES</b></p> <p>Blank Without Body</p> <p><b>N</b> 3/4" NPTF Ports</p> <p><b>S</b> #12 SAE Ports</p>
--	--	--

**WARNING:** the specifications/application data shown in our catalogs and data sheets are intended only as a general guide for the product described (herein). Any specific application should not be undertaken without independent study, evaluation, and testing for suitability.