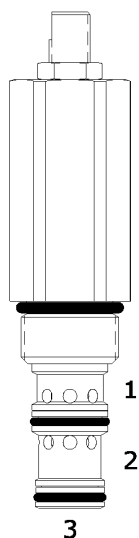


DF-PWI SEQUENCE VALVE, INTERNAL PILOT AND DRAIN

DESCRIPTION

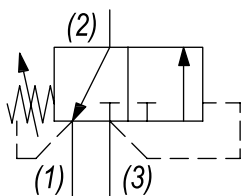
10 size, 7/8-14 thread, "Delta" series, internal pilot and drain, sequence valve.

OPERATION

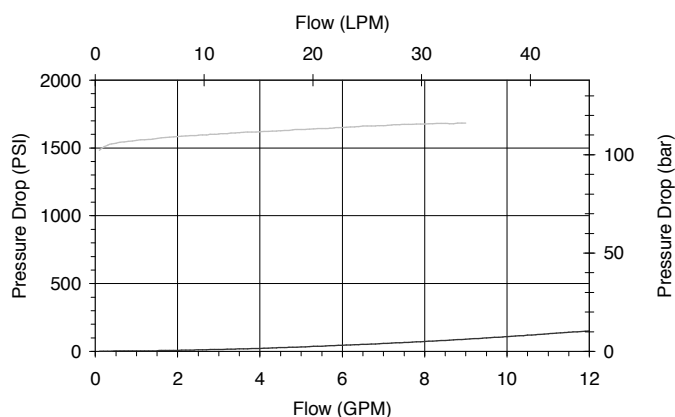
The DF-PWI blocks flow at (3) and allows flow from (2) to (1). On attainment of a predetermined pressure at (3) the valve shifts to allow flow from (3) to (2) and block flow at (1).

FEATURES

- Hardened parts for long life.
- Optional spring ranges to 1500 PSI (103 bar).
- Industry common Cavity.

HYDRAULIC SYMBOL

PERFORMANCE

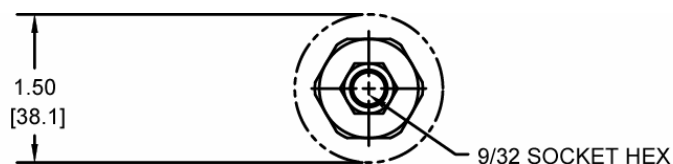
Actual Test Data (Cartridge Only)


VALVE SPECIFICATIONS

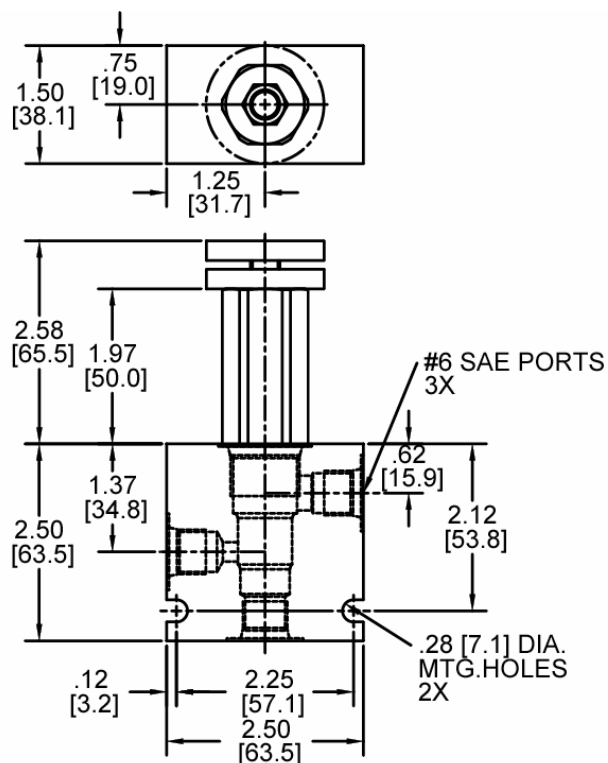
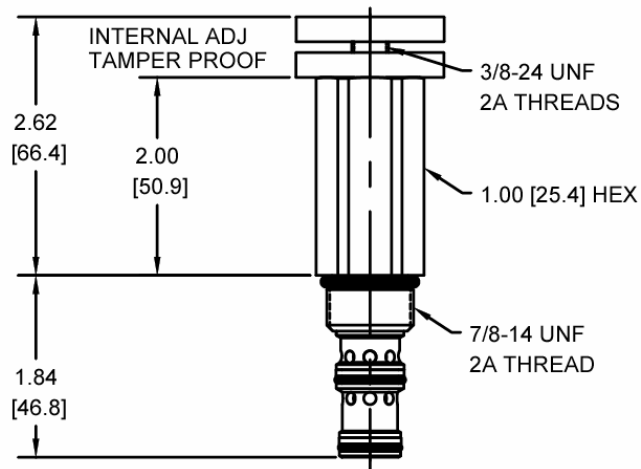
Nominal Flow	8 GPM (30 LPM)
Rated Operating Pressure	3000 PSI (207 bar)
Typical Internal Leakage (150 SSU)	5 cu in/min (82 ml/min)
Viscosity Range	36 to 3000 SSU (3 to 647 cSt)
Filtration	ISO 18/16/13
Media Operating Temp. Range	-40° to 250°F (-40° to 120°C)
Weight	.57 lbs (.26 kg)
Operating Fluid Media	General Purpose Hydraulic Fluid
Cartridge Torque Requirements	30 ft-lbs (40.6 Nm)
Cavity	DELTA 3W
Cavity Form Tool (Finishing)	40500001
Seal Kit	21191206

WARNING: the specifications/application data shown in our catalogs and data sheets are intended only as a general guide for the product described (herein). Any specific application should not be undertaken without independent study, evaluation, and testing for suitability.

DIMENSIONS



EXTERNAL ADJ.



Body Weight: .76 lbs (.35 kg)

ORDERING INFORMATION

DF-PWI —

OPTIONS

Buna Standard	00
Viton Standard	V0
Buna, Knob	0K
Viton, Knob	VK
Buna, Internal Adjust	0I
Viton, Internal Adjust	VI
Buna, Tamper Proof	0T
Viton, Tamper Proof	VT

BODIES

Blank	Without Body
N	1/4" NPTF Ports
S	#6 SAE Ports

PRESSURE RANGE

0425	50-425 PSI
1500	425-1500 PSI

Tamper Proof

Fill in 4 Digit Pressure Setting
Example: 0500 - 500 PSI