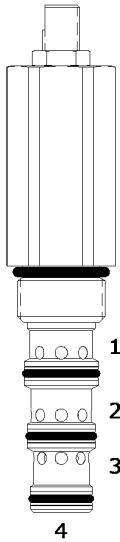


DG-PSO SEQUENCE VALVE, 2 WAY NORMALLY OPEN, EXTERNAL PILOT

DESCRIPTION

10 size, 7/8-14 thread, "Delta" series, 2 way normally open sequence valve, external pilot.

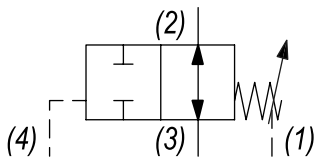
OPERATION

The DG-PSO in neutral (un-piloted), allows flow between (3) and (2) bi-directionally. The spring chamber is constantly vented at (1). On attainment of a predetermined pressure at (4), the cartridge shifts to block flow from (3) to (2).

Note: that the backpressure value at (1) must be added to the selected pressure setting to determine pilot pressure necessary to close valve.

FEATURES

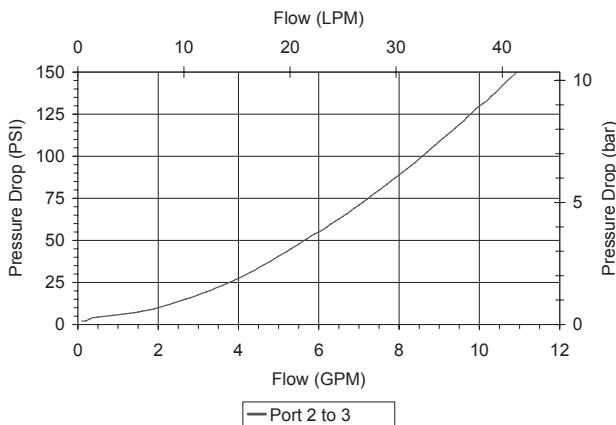
- Optional spring ranges to 1500 PSI (103 bar).
- Hardened parts for long life.
- Industry common cavity.

HYDRAULIC SYMBOL


Orifice .030 to .060 diameter recommended beneath port (4).

PERFORMANCE

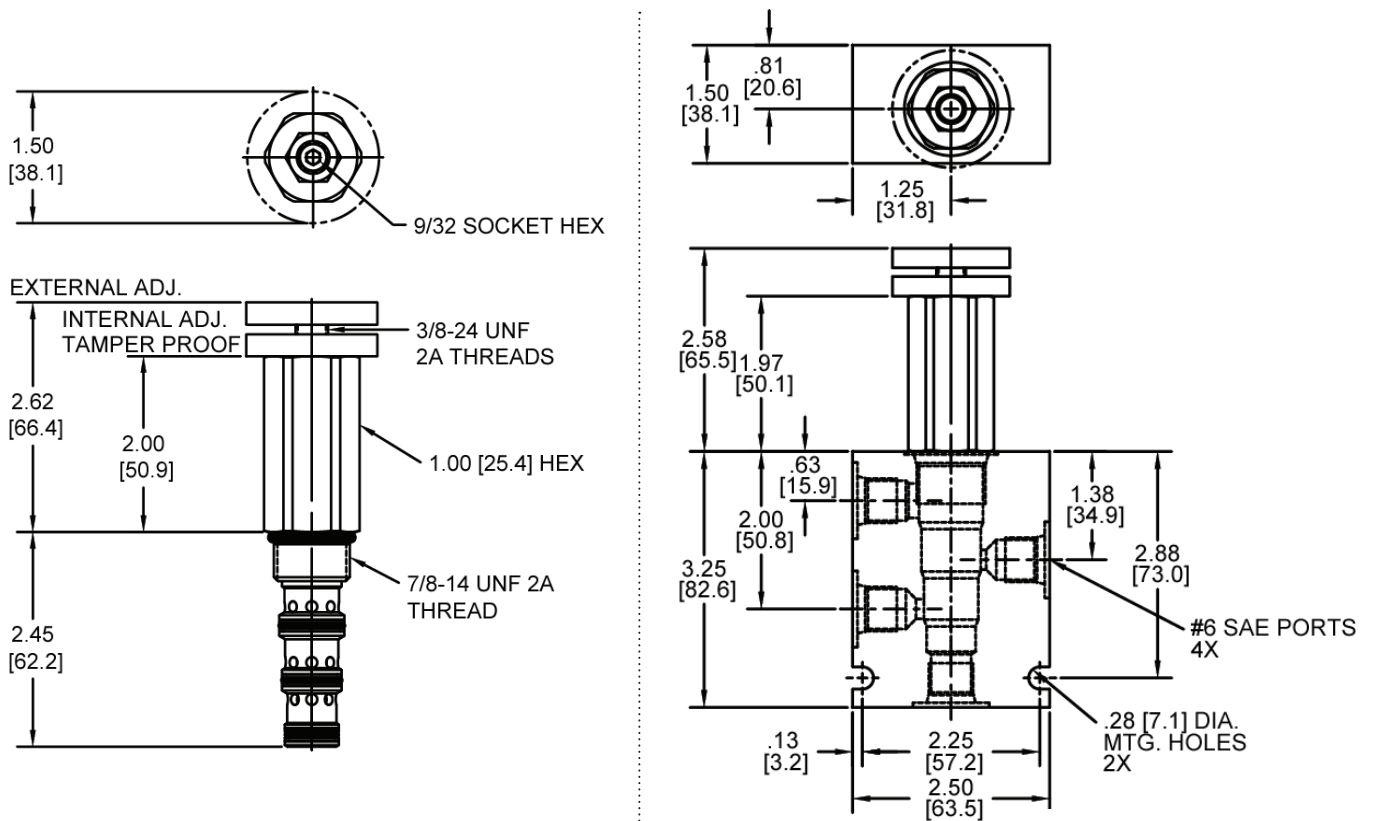
Actual Test Data (Cartridge Only)


VALVE SPECIFICATIONS

Nominal Flow	10 GPM (38 LTR/M)
Rated Operating Pressure	3000 PSI (207 bar)
Typical Internal Leakage (150 SSU)	5 cu in/min (82 ml/min)
Viscosity Range	36 to 3000 SSU (3 to 647 cSt)
Filtration	ISO 18/16/13
Media Operating Temp. Range	-40° to 250°F (-40° to 120°C)
Weight	.62 lbs (.28 kg)
Operating Fluid Media	General Purpose Hydraulic Fluid
Cartridge Torque Requirements	30 ft-lbs (40.6 Nm)
Cavity	DELTA 4W
Cavity Form Tool (Finishing)	40500002
Seal Kit	21191214

WARNING: the specifications/application data shown in our catalogs and data sheets are intended only as a general guide for the product described (herein). Any specific application should not be undertaken without independent study, evaluation, and testing for suitability.

DIMENSIONS



Body Weight: .99 lbs (.45 kg)

ORDERING INFORMATION

<p>DG-PSO - - - -</p> <p>OPTIONS</p> <ul style="list-style-type: none"> Buna Standard 00 Viton Standard V0 Buna, Knob 0K Viton, Knob VK Buna, Internal Adjust 0I Viton, Internal Adjust VI Buna, Tamper Proof 0T Viton, Tamper Proof VT 	<p>BODIES</p> <ul style="list-style-type: none"> Blank Without Body N 1/4" NPTF Ports S #6 SAE Ports
<p>PRESSURE RANGE</p> <p>0425 50 - 425 PSI</p> <p>1500 425 - 1500 PSI</p>	

Tamper Proof
 Fill in 4 Digit Pressure Setting
 Example: 0500 - 500 PSI

W-51 / 12-2022

WARNING: the specifications/application data shown in our catalogs and data sheets are intended only as a general guide for the product described (herein). Any specific application should not be undertaken without independent study, evaluation, and testing for suitability.