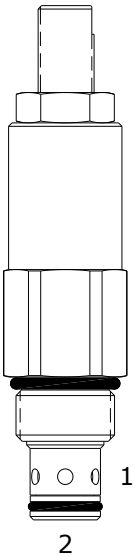


HDE-RVD DIFFERENTIAL AREA RELIEF VALVE

DESCRIPTION

"High Pressure" 10 size, 7/8-14 thread, "Delta" series, differential area relief valve

OPERATION

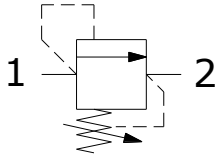
The HDE-RVD blocks flow from (1) to (2) until sufficient pressure is present at (1) to force the poppet to open and allow metered flow from (1) to (2).

The cartridge offers smooth transition in response to load changes in common hydraulic circuits.

FEATURES

- Hardened parts for long life.
- Industry common cavity.

Good pressure vs. flow characteristic.

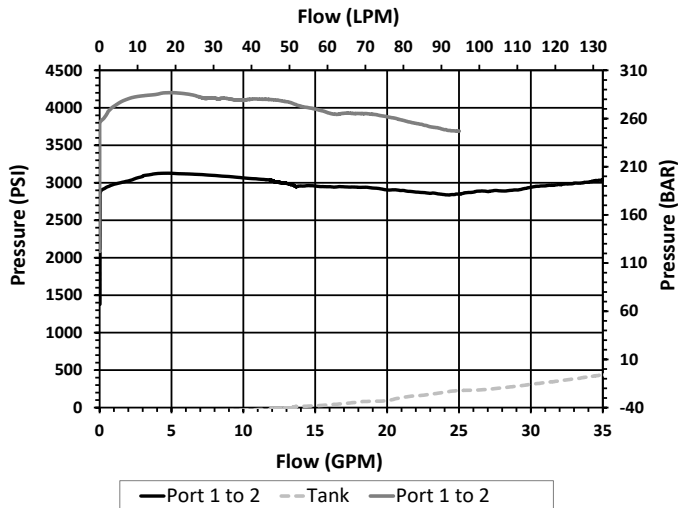
HYDRAULIC SYMBOL


Recommended return line pressure as shown on performance data graph.

Undercut cavity recommended for maximum flows.
(Consult factory for details)

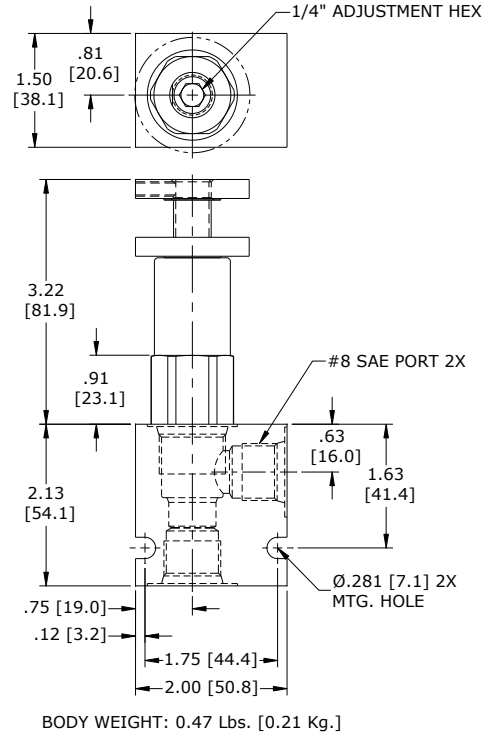
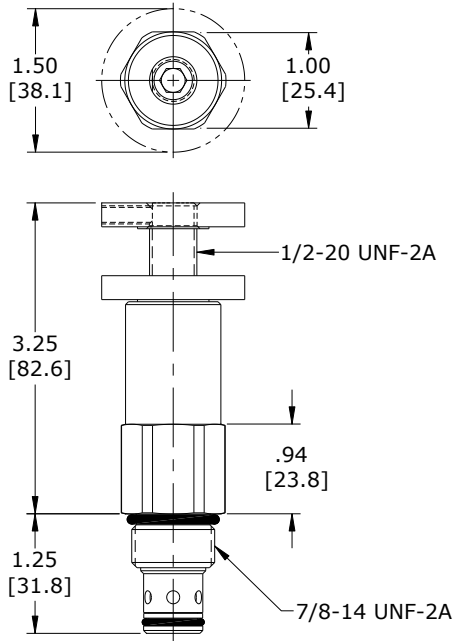
PERFORMANCE

Actual Test Data (Cartridge Only)


VALVE SPECIFICATIONS

Nominal Flow	40 GPM (151 LPM)
Rated Operating Pressure	4500 PSI (310 bar)
Viscosity Range	36 to 3000 SSU (3 to 647 cSt)
Filtration	ISO 18/16/13
Media Operating Temperature Range	-40° to 250° F (-40° to 120° C)
Weight	0.57 lbs. (0.26 kg)
Operating Fluid Media	General Purpose Hydraulic Fluid
Cartridge Torque Requirements	50 ft-lbs (68 Nm)
Cavity	DELTA 2W
Cavity Form Tool (Finishing)	40500000
Seal Kit	21191200

DIMENSIONS



ORDERING INFORMATION

HDE-RVD		-	-	-	-	-
OPTIONS						
Buna Standard	00					
Viton Standard	V0					
Buna, Screen	A0					
Viton, Screen	W0					
Buna, Knob	0K					
Viton, Knob	VK					
Buna, Knob, Screen	AK					
Viton, Knob, Screen	WK					
			4500			
					PRESSURE RANGE/SETTING	
					1000-4500 PSI	

BODIES
 Blank Without Body
N 3/8 NPTF Ports
S #8 SAE Ports

Note: Aluminum **NOT** durability rated for 4500 PSI. Consult factory options.

Note: Use screen only if flow direction is from (1) to (2).

WARNING: the specifications/application data shown in our catalogs and data sheets are intended only as a general guide for the product described (herein). Any specific application should not be undertaken without independent study, evaluation, and testing for suitability.