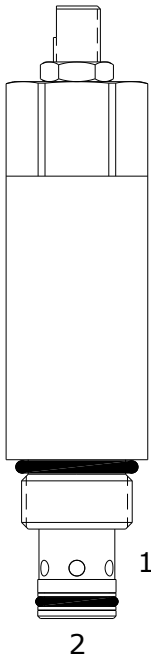


HDE-RWB CROSSOVER RELIEF VALVE, FOR PARALLEL CIRCUITS

DESCRIPTION

"High Pressure" 10 size, 7/8-14 thread, "Delta" series, crossover relief valve for parallel circuit applications

OPERATION

The HDE-RWB is a direct-acting, cross over relief valve. When pressure at either port exceeds the nominal setting value, flow will be diverted to the opposite port.

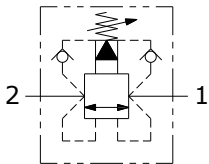
Back pressure at either port will affect the nominal setting of the opposite port on a 1:1 basis.

For correlation purposes, pre-set value will be measured at port (2). Pressure at port (1) will not vary more than ± 300 PSI from the port (2) value.

The cartridge offers smooth transition in response to load changes in common hydraulic circuits.

FEATURES

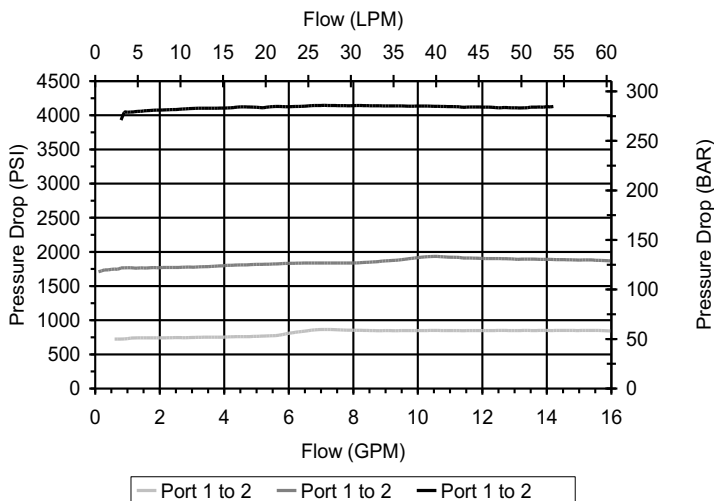
- Hardened parts for long life.
- Industry common cavity.

HYDRAULIC SYMBOL


The HDE-RWB is designed for parallel circuit applications. For series circuits, use HDE-RWC

PERFORMANCE

Actual Test Data (Cartridge Only)


VALVE SPECIFICATIONS

Nominal Flow	15 GPM (57 LPM) from (2) to (1) 20 GPM (76 LPM) from (1) to (2)
Rated Operating Pressure	4200 PSI (290 bar)
Viscosity Range	36 to 3000 SSU (3 to 647 cSt)
Filtration	ISO 18/16/13
Media Operating Temperature Range	-40° to 250° F (-40° to 120° C)
Weight	0.80 lbs. (0.36 kg)
Operating Fluid Media	General Purpose Hydraulic Fluid
Cartridge Torque Requirements	50 ft-lbs (68 Nm)
Cavity	DELTA 2W
Cavity Form Tool (Finishing)	40500000
Seal Kit	21191202

