

HSL-PCE ADJUSTABLE PRESSURE COMPENSATING REGULATOR VALVE
DESCRIPTION

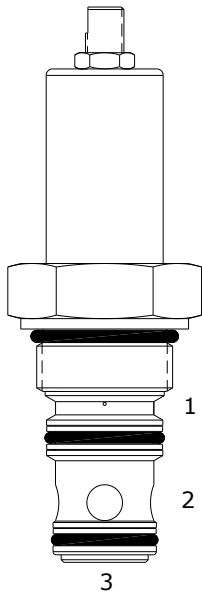
"High pressure" 16 size, 1 5/16-12 thread, "Sixteen" series, pressure compensating regulator valve.

OPERATION

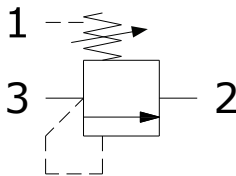
The HSL-PCE, with an external orifice in parallel with ports (3) and (1), maintains a constant flow rate across the external orifice regardless of load pressure changes in the system upstream of (3) or in the bypass leg at (2) as long as pressure at (2) is less than (1) by the setting value.

The valve's spool maintains a constant differential pressure across the external orifice, thereby regulating the hydraulic flow rate across the external orifice. (see options table for pressure ranges)

When used with an orifice as described above, it functions as a priority type regulator, delivering pump flow first to the external orifice, then bypassing excess to (2). All ports may be fully pressurized.


FEATURES

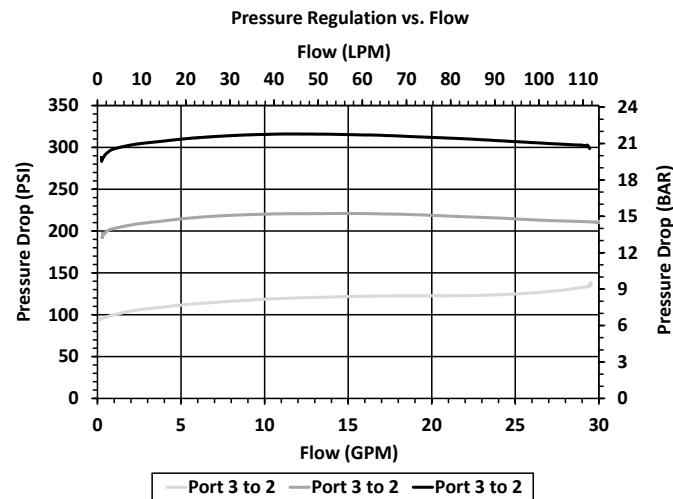
- Hardened parts for long life.
- Industry common cavity.

HYDRAULIC SYMBOL


- Can be used as an adjustable logic element.
- Can be used as a low range sequence valve.
- Can be used as a bypass compensator (for PC flow).
- Do not use orifice disk under cartridge valve.

PERFORMANCE

Actual Test Data (Cartridge Only)


VALVE SPECIFICATIONS

Nominal Flow	30 GPM (115 LPM)
Rated Operating Pressure	4200 PSI (290 bar)
Typical Internal Leakage (150 SSU)	30 cu in/min (0.5 LPM)
Seat Ratio	Area of pilot is equal to the area at Port (3)
Viscosity Range	36 to 3000 SSU (3 to 647 cSt)
Filtration	ISO 18/16/13
Media Operating Temperature Range	-40° to 250° F (-40° to 120° C)
Weight	1.15 Lbs. (0.52 kg)
Operating Fluid Media	General Purpose Hydraulic Fluid
Cartridge Torque Requirements	115 ft-lbs (155 Nm)
Cavity	SIXTEEN 3WS
Cavity Form Tool (Finishing)	40500021
Seal Kit	21191406

