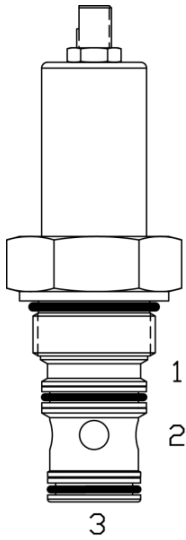


**SL-PWB SEQUENCE VALVE, NORMALLY CLOSED, INTERNAL PILOT WITH REVERSE FREE FLOW**

**DESCRIPTION**

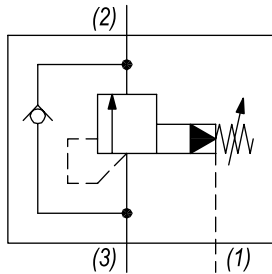
16 size, 1 5/16-12 thread, "SIXTEEN" series, internal pilot normally closed, sequence valve w/ reverse free flow.

**OPERATION**

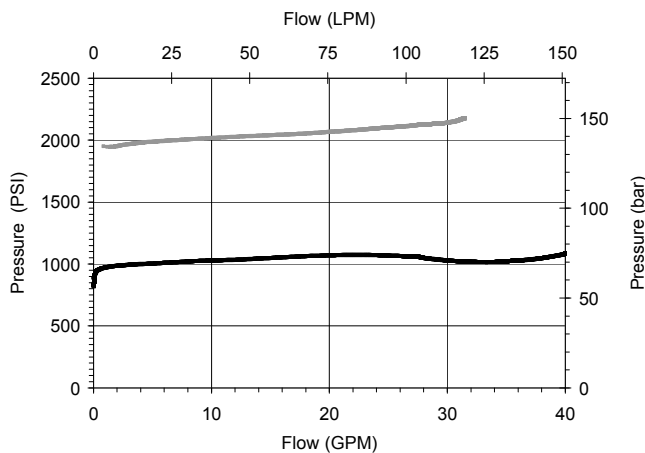
The SL-PWB blocks flow from ports (3) to (2). On attainment of a predetermined pressure at (3) the valve shifts to allow flow from (3) to (2). Port (1) should be a tank line. Reverse flow from (2) to (3) occurs when the pressure at port (2) is at least 45 PSI (3.1 bar) higher than at port (3).

**FEATURES**

- Hardened parts for long life.
- Industry common cavity.

**HYDRAULIC SYMBOL**

**PERFORMANCE**

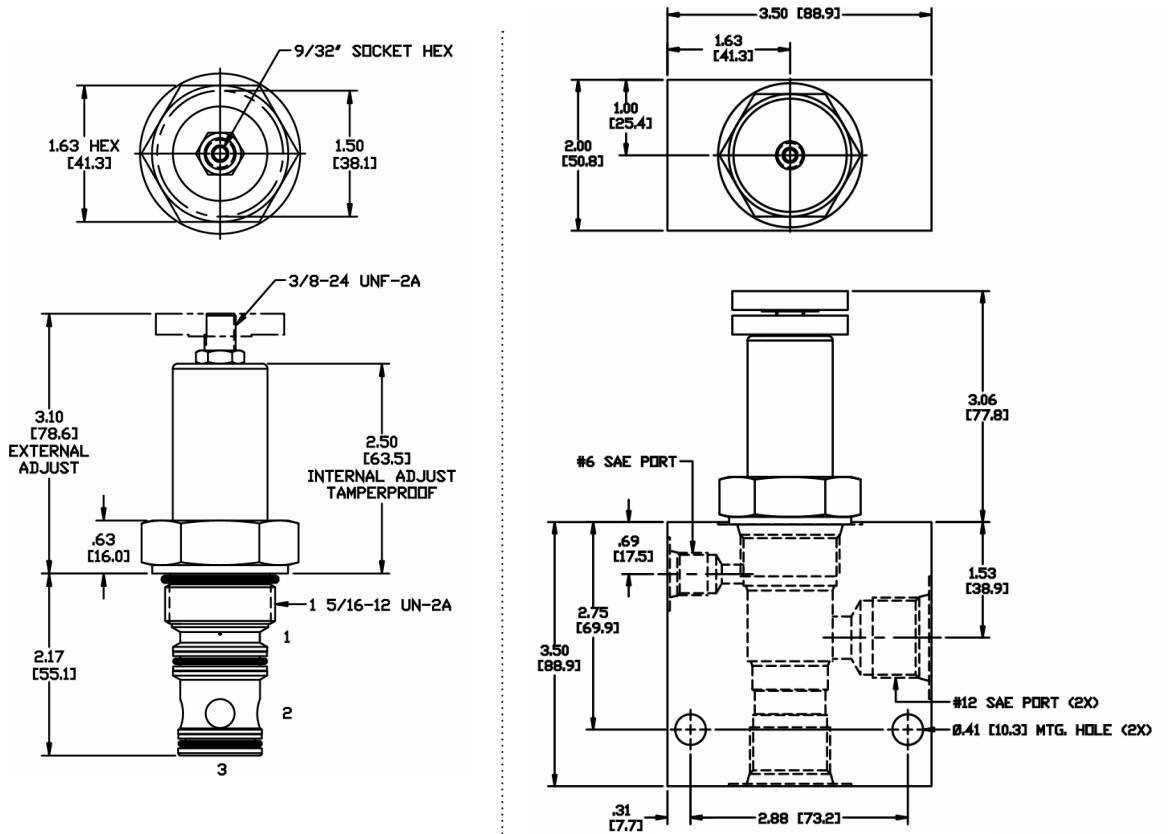
Actual Test Data (Cartridge Only)


**VALVE SPECIFICATIONS**

Nominal Flow	40 GPM (151 LPM)
Rated Operating Pressure	3500 PSI (241 bar)
Viscosity Range	36 to 3000 SSU (3 to 647 cSt)
Filtration	ISO 18/16/13
Media Operating Temp. Range	-40° to 250°F (-40° to 120°C)
Weight	1.15 lbs (.52 kg)
Operating Fluid Media	General Purpose Hydraulic Fluid
Cartridge Torque Requirements	90 ft-lbs (122 Nm)
Cavity	SIXTEEN 3WS
Cavity Form Tool (Finishing)	40500021
Seal Kit	21191404

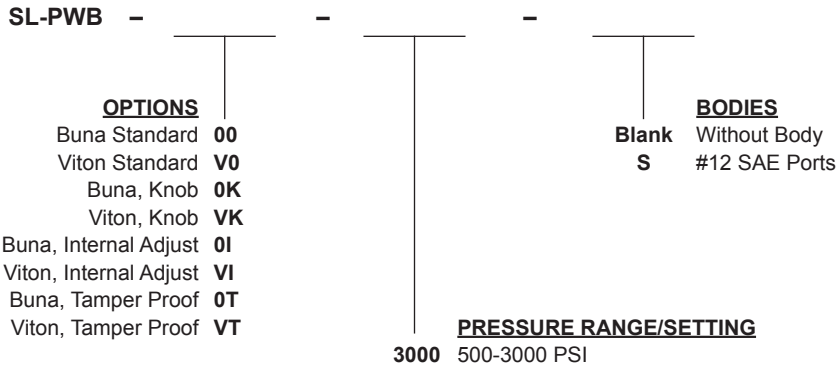
**WARNING:** the specifications/application data shown in our catalogs and data sheets are intended only as a general guide for the product described (herein). Any specific application should not be undertaken without independent study, evaluation, and testing for suitability.

**DIMENSIONS**



Body Weight: 1.89 lbs (.86 kg)

**ORDERING INFORMATION**



**Tamper Proof**  
 Fill in 4 Digit Pressure Setting  
 Example: 2000 = 2000 PSI

W/51 / 12-2022

**WARNING:** the specifications/application data shown in our catalogs and data sheets are intended only as a general guide for the product described (herein). Any specific application should not be undertaken without independent study, evaluation, and testing for suitability.