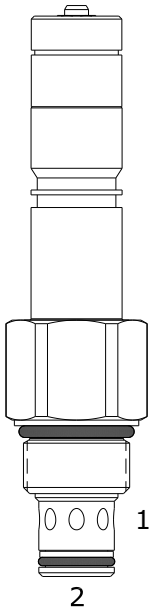


EDE-RBP 2 WAY NORMALLY CLOSED, PROPORTIONAL RELIEF VALVE



DESCRIPTION

10 size, 7/8-14 thread, "Delta" series, solenoid operated, 2 way normally closed, pilot operated spool type relief valve.

OPERATION

The EDE-RBP blocks flow from (2) to (1) until sufficient pressure is present at (2) to offset a spring induced force. As solenoid current is increased, it offsets a portion of this force, resulting in a lower relief pressure.

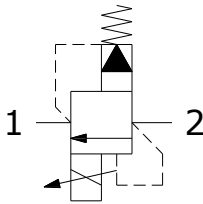
Can be infinitely adjusted across a prescribed range in response to a PWM (Pulse Width Modulated) current. Pressure output is inversely proportional to the current input. With full current applied to the solenoid, the valve will free flow from (2) to (1) at approximately 100 PSI [7 bar].

Note: Backpressure on port (1) becomes additive to the pressure setting at a 1:1 ratio.

FEATURES

- Efficient wet-armature construction.
- Cartridges are voltage interchangeable.
- Industry common cavity.
- Unitized, molded coil design.
- Continuous duty rated solenoid.
- Optional coil voltages and terminations.

HYDRAULIC SYMBOL



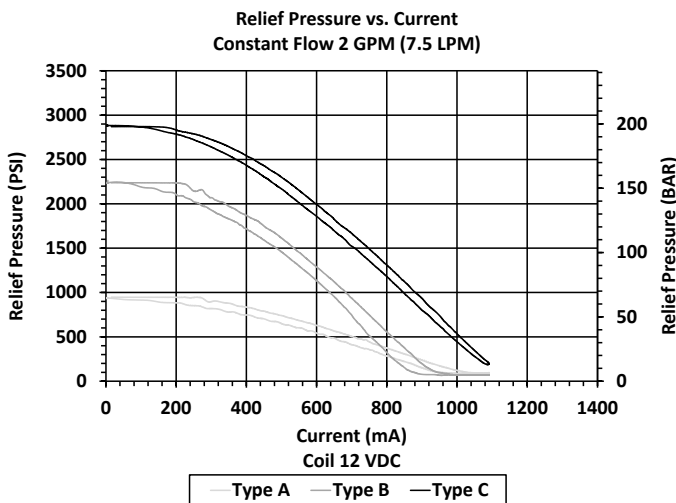
Great for fan drive motor control.

100-150 Hz PWM or 100-200 Hz Dither Frequency Recommended.

Consult Factory for other coil options (Note: "T" coil alters valve performance).

PERFORMANCE

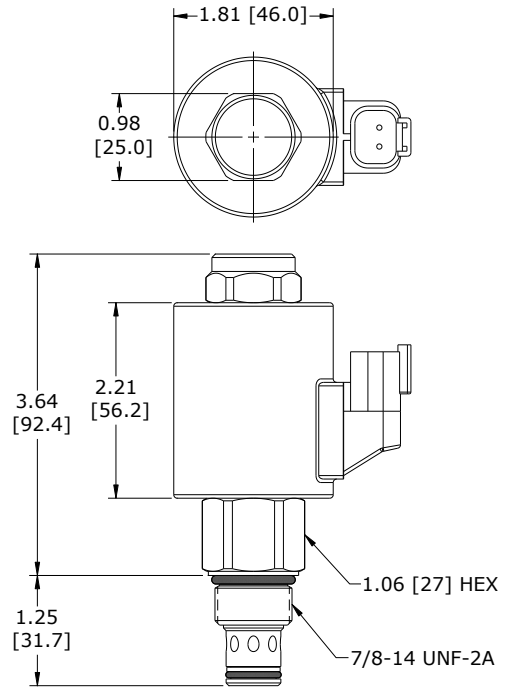
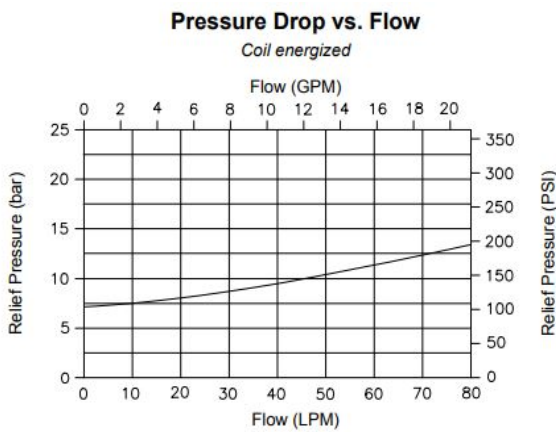
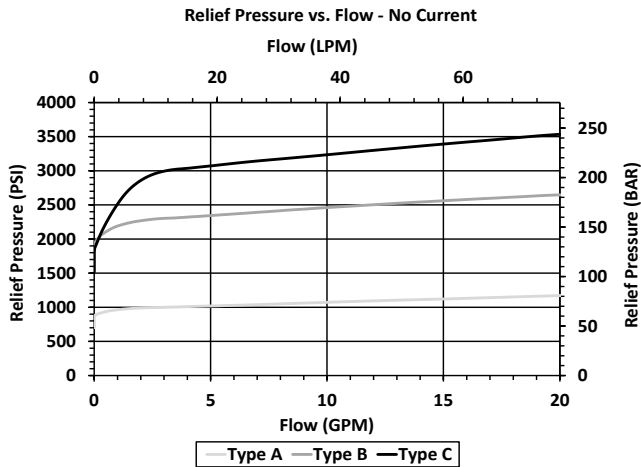
Actual Test Data (Cartridge Only)



VALVE SPECIFICATIONS

Nominal Flow	0-20 GPM (0-76 LPM)
Operating Range	100 - 3000 PSI (7-207 bar)
Typical Hysteresis	10% Max
Viscosity Range	36 to 3000 SSU (3 to 647 cSt)
Filtration	ISO 18/16/13
Media Operating Temperature Range	-22° to 212° F (-30° to 100° C)
Weight	0.62 lbs. (0.28 kg)
Operating Fluid Media	General Purpose Hydraulic Fluid
Cartridge Torque Requirements	30 ft-lbs (40.6 Nm)
Coil Nut Torque Requirements	4-6 ft-lbs (5.4-8.1 Nm)
Cavity	DELTA 2W
Cavity Form Tool (Finishing)	40500000
Seal Kit	21191202

DIMENSIONS



ORDERING INFORMATION

EDE-RBP

- OPTIONS**
- Buna, 100-1015 PSI range (7-70 bar) **0A**
 - Viton, 100-1015 PSI range (7-70 bar) **VA**
 - Buna, 100-2175 PSI range (7-150 bar) **0B**
 - Viton, 100-2175 PSI range (7-150 bar) **VB**
 - Buna, 100-3000 PSI range (7-207 bar) **0C**
 - Viton, 100-3000 PSI range (7-207 bar) **VC**

- BODIES**
- Blank
 - N** Without Body
 - S** 3/8 NPT Ports
 - S** #8 SAE Ports

- VOLTAGE**
- 12** 12 VDC
 - 24** 24 VDC

IMMERSION PROOF "I" COIL

- IA** "I" Coil AMP Superseal - Integral
- ID** "I" Coil Deutsch - Integral

Approximate Coil Weight: 0.80 lbs. (0.36 kg.)

WARNING: the specifications/application data shown in our catalogs and data sheets are intended only as a general guide for the product described (herein). Any specific application should not be undertaken without independent study, evaluation, and testing for suitability.