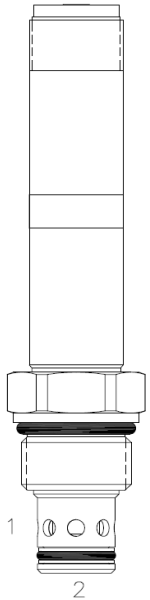


EDE-S2G 2 WAY NORMALLY CLOSED, PROPORTIONAL FLOW CONTROL VALVE

DESCRIPTION

10 size, 7/8-14 thread, "Delta" series, solenoid operated, 2 way normally closed, proportional flow control valve.

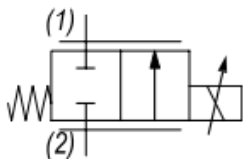
OPERATION

When de-energized the EDE-S2G blocks flow at ports (1) and (2).

When energized, the valve allows flow from (2) to (1). Flow is proportional to current applied to the coil. A compensator must be used to create a pressure compensated flow control function.

FEATURES

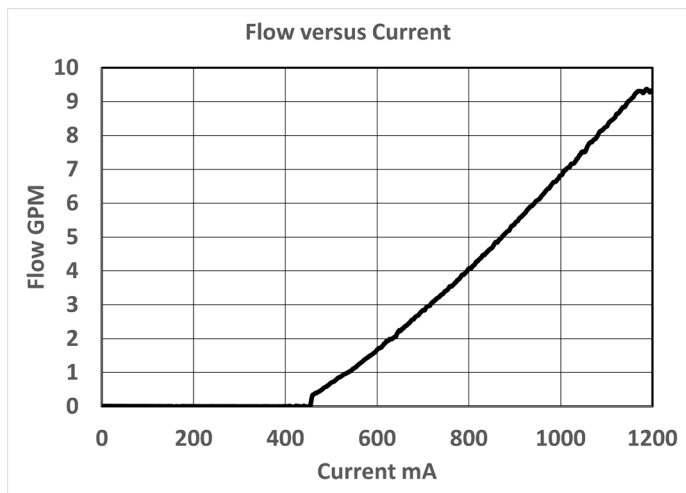
- Efficient wet-armature construction.
- Cartridges are voltage interchangeable.
- Industry common cavity.
- Unitized, molded coil design.
- Continuous duty rated solenoid.
- Optional coil voltages and terminations.

HYDRAULIC SYMBOL


Requires use of a compensator to give pressure compensated flow control function.

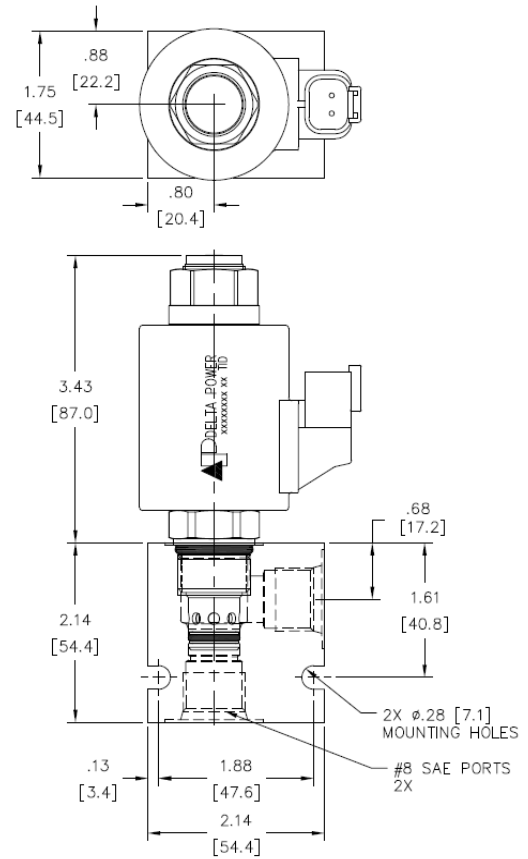
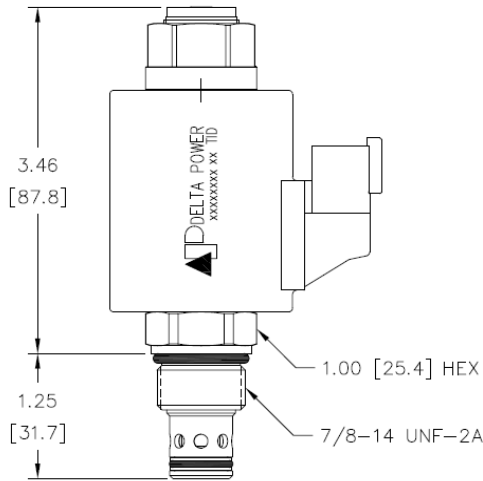
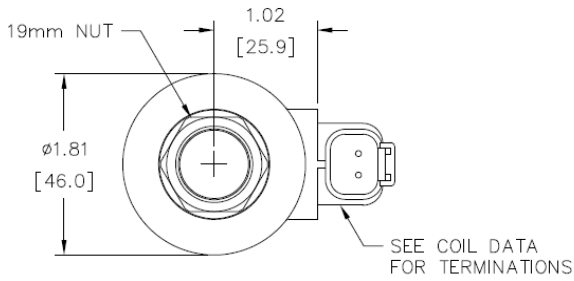
100-150 Hz PWM or 100-200 Hz Dither Frequency Recommended

Consult Factory for other coil options. (Note: "T" coil alters valve performance)

PERFORMANCE

VALVE SPECIFICATIONS

Flow Range	10 GPM (38 LPM)
Max Operating Pressure	3500 PSI (241 bar)
Curve PSID	200 PSI (14.2 bar)
Max Differential Pressure	350 PSI (24 bar)
Hysteresis Typical	±3% (100-150 Hz PWM)
Threshold Typical	20% to 40% of Rated Current
Viscosity Range	36 to 3000 SSU (3 to 647 cSt)
Filtration	ISO 18/16/13
Media Operating Temperature Range	-22° to 212° F (-30° to 100° C)
Weight	.58 lbs. (0.26 kg)
Operating Fluid Media	General Purpose Hydraulic Fluid
Cartridge Torque Requirements	30 ft-lbs (40.6 Nm)
Coil Nut Torque Requirements	4-6 ft-lbs (5-8 Nm)
Cavity	DELTA 2W
Cavity Form Tool (Finishing)	40500000
Seal Kit	21191200

DIMENSIONS



ORDERING INFORMATION

EDE-S2G

OPTIONS

Buna Standard **00**
 Viton Standard **V0**

Blank
N
S

BODIES

Without Body
 3/8 NPTF Ports
 #8 SAE Ports

VOLTAGE

12 12 VDC
24 24 VDC

IMMERSION PROOF "T" COIL

IA "I" Coil AMP Superseal - Integral
ID "I" Coil Deutsch - Integral

Approximate Coil Weight: .80 lbs. (0.36 kg.)

WARNING: the specifications/application data shown in our catalogs and data sheets are intended only as a general guide for the product described (herein). Any specific application should not be undertaken without independent study, evaluation, and testing for suitability.