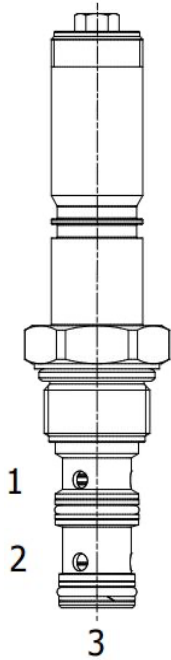


**EDF-FAP 3 WAY PRESSURE COMPENSATED PRIORITY TYPE PROPOTIONAL FLOW REGULATOR**

**DESCRIPTION**

10 size, 7/8-14 thread, "Delta" series, solenoid operated, normally closed, spool style, 3-way priority type pressure compensated proportional flow regulator. It can also be used as a restrictive-type 2-way, pressure compensated flow regulator when the bypass line (Port 2) is blocked.

**OPERATION**

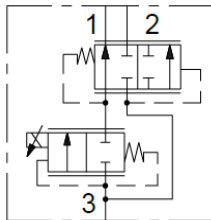
EDF-FAP maintains a constant flow rate out of (1) regardless of load pressure variations in the circuit downstream of (3) and regardless of bypass pressure variations in the circuit downstream of (2). Excess flow bypasses out of (2). When coil is not energized, there is no regulated flow out of (1).

**OPERATION OF MANUAL OVERRIDE OPTION:**

To override, turn the manual override screw counterclockwise. To release turn the manual override screw clockwise.

**FEATURES**

- Hardened parts for long life.
- Industry common cavity.
- Excellent linearity and low hysteresis characteristics.
- Cartridges are voltage interchangeable.
- Optional coil voltages and terminations available.
- Unitized, molded coil design.
- Continuous duty rated solenoid.

**HYDRAULIC SYMBOL**


It can be used as a restrictive 2-way pressure-compensated flow control valve, blocking bypass line port (2)

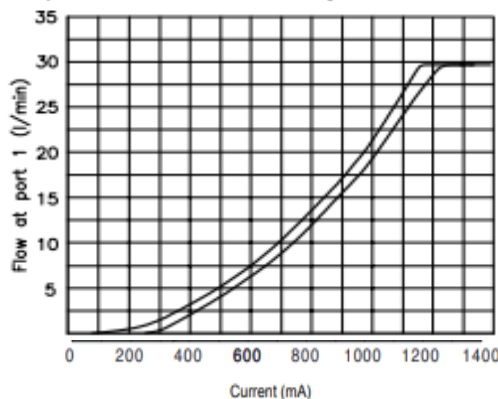


100-150 Hz PWM or 100-200 Hz Dither Frequency Recommended.

Consult Factory for other coil options (Note: "T" coil alters valve performance).

**PERFORMANCE**

**FLOW VS CURRENT**  
Coil Z - 100 Hz PWM - Inlet Flow=35LPM - Pressure at port 1=30bar - Oil viscosity 46 cSt at 45°C

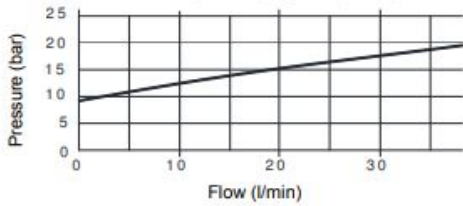

**VALVE SPECIFICATIONS**

Flow Range	6.5 GPM Maximum [25 LPM]
Max System Pressure	3500 PSI (241 bar)
Leakage	10 cu-in./min. @ 3000 PSI 160 cc/min. @ 207 bar
Hysteresis	±5%
Viscosity Range	36 to 3000 SSU (3 to 647 cSt)
Filtration	ISO 18/16/13
Media Operating Temperature Range	-22° to 212° F (-30° to 100° C)
Weight	0.49 lbs. (0.22 kg)
Operating Fluid Media	General Purpose Hydraulic Fluid
Cartridge Torque Requirements	30 ft-lbs (41 Nm)
Coil Nut Torque Requirements	4-6 ft-lbs (5.4-8.1 Nm)
Cavity	<a href="#">DELTA 3W</a>
Cavity Form Tool (Finishing)	40500001
Seal Kit	21191210

**DIMENSIONS**

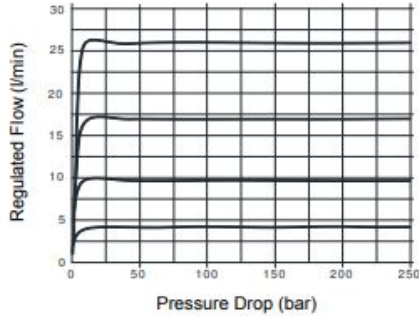
**Pressure Drop 3→2 (bar)**

Oil 26 cSt (121 SSU) @ 50°C (104°F)



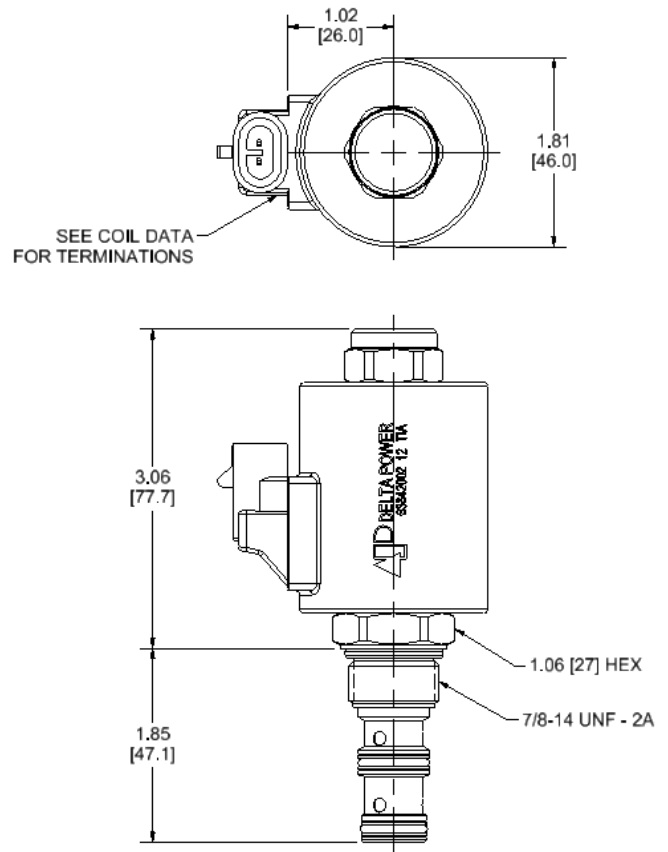
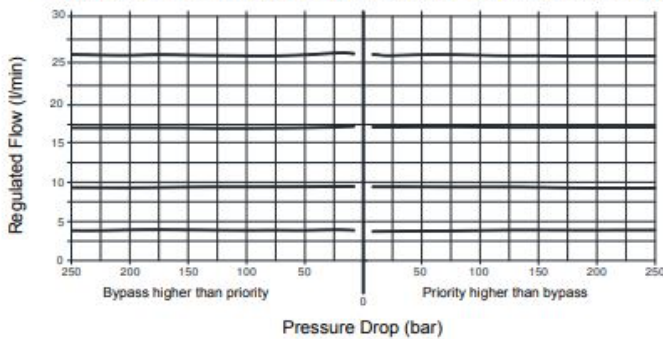
**Regulated Flow vs. Pressure**

2 WAYS - Coil 12 VDC - 130 Hz PWM - Oil 26 cSt (121 SSU) @ 50°C (104°F)



**Pres. Compensation from Inlet to Work Port or Bypass Port**

3 WAYS - Coil 12 VDC - 130 Hz PWM - Oil 26 cSt (121 SSU) @ 50°C (104°F)



**ORDERING INFORMATION**

Approximate Coil Weight: .80 lbs. (0.36 kg.)

<b>EDF-FAP</b> - - - - -			
<b>OPTIONS</b>			<b>BODIES</b>
Buna Standard	<b>00</b>	Blank	Without Body
Buna, Screw Type Override (Knob)	<b>0S</b>	<b>N</b>	3/8 NPTF Ports
		<b>S</b>	#8 SAE Ports
			<b>VOLTAGE</b>
		<b>12</b>	12 VDC
		<b>24</b>	24 VDC
<b>IMMERSION PROOF "T" COIL</b>			
	<b>IA</b>	"I" Coil AMP Superseal - Integral	
	<b>ID</b>	"I" Coil Deutsch - Integral	

**WARNING:** the specifications/application data shown in our catalogs and data sheets are intended only as a general guide for the product described (herein). Any specific application should not be undertaken without independent study, evaluation, and testing for suitability.