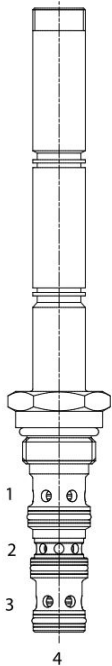


EDG-S4P 4 WAY 3 POSITION, CYLINDER SPOOL, PROPORTIONAL DIRECTIONAL VALVE

DESCRIPTION

10 size, 7/8-14 thread, "Delta" series, solenoid operated, 4 way 3 position cylinder spool, electro-proportional directional valve.

OPERATION

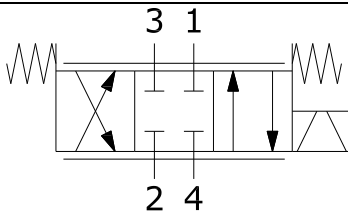
EDG-S4P when de-energized, blocks flow at all ports. When coil (S1) is energized, flow is allowed from (2) to (1) and from (3) to (4). When (S2) is energized, flow is allowed from (2) to (3) and from (1) to (4). Flow is proportional to the current applied to the coil. A compensator must be used to create a pressure compensated flow control function.

FEATURES

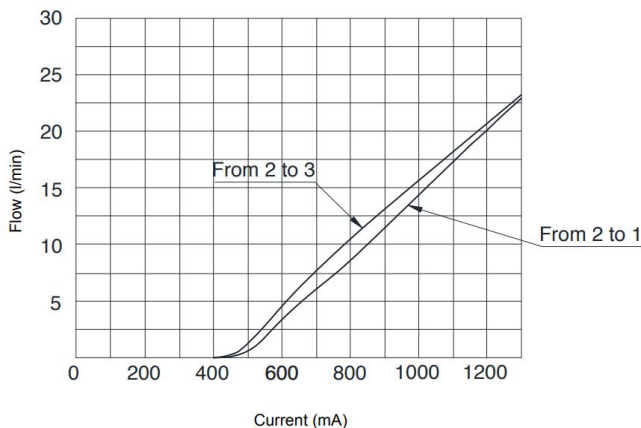
- Hardened parts for long life.
- Industry common cavity.
- Excellent linearity and low hysteresis characteristics.
- Cartridges are voltage interchangeable. Industry common cavity.
- Unitized, molded coil design.
- Continuous duty rated solenoid.
- Optional coil voltages and terminations.



Requires use of a compensator to give pressure compensated flow control function.
100-150 Hz PWM or 100-200 Hz Dither Frequency Recommended.
Consult Factory for other coil options. (Note: "L" coil alters valve performance)

HYDRAULIC SYMBOL

PERFORMANCE
Flow vs. Current

Coil 12 VDC - 100 Hz PWM - Oil 26 cSt (121 SSU) @ 50°C (122°F)
Operating curves made with circuit having a pressure drop of 14bar


VALVE SPECIFICATIONS

Flow Range	5 GPM (20 LPM)
Maximum System Pressure	3500 PSI (241 bar)
Leakage	15 cu in/min. 250 cc/min. @ 210 bar
Hysteresis	+5%
Viscosity Range	36 to 3000 SSU (3 to 647 cSt)
Filtration	ISO 18/16/13
Media Operating Temperature Range	-22° to 212° F (-30° to 100° C)
Operating Fluid Media	General Purpose Hydraulic Fluid
Cartridge Torque Requirements	30 ft-lbs (40.6 Nm)
Coil Nut Torque Requirements	4-6 ft-lbs (5.4-8.1 Nm)
Cavity	DELTA 4W
Cavity Form Tool (Finishing)	40500002
Seal Kit	21191214

COIL SPECIFICATIONS

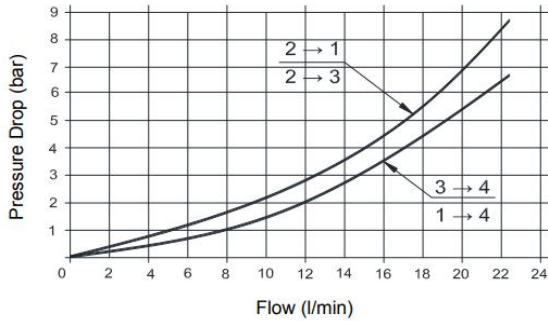
Current Supply Characteristics	PWM (Pulse Width Modulation)
Rated Current Range	400 – 1400 mA
PWM or Super Imposed Dither Frequency	100 – 200 Hz

WARNING: the specifications/application data shown in our catalogs and data sheets are intended only as a general guide for the product described (herein). Any specific application should not be undertaken without independent study, evaluation, and testing for suitability.

DIMENSIONS

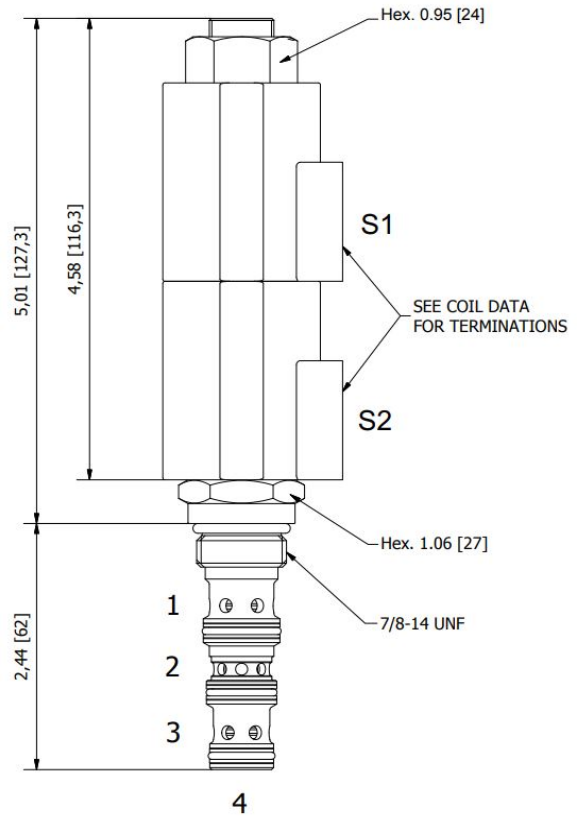
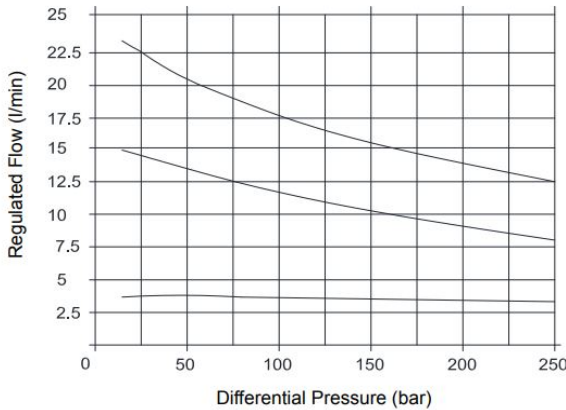
Pressure Drop vs. Flow

Oil 26cSt (121 SSU) @ 50°C (122°F)



Pressure Compensation from Inlet to Work Port

Oil 26cSt (121 SSU) @ 50°C (122°F)



(for bodies style and sizes see section "Accessories")

ORDERING INFORMATION

EDG-S4P

OPTIONS
Buna Standard
Up to 5 GPM [20 LPM]

00

Blank
N
S

BODIES
Without Body
1/4 NPTF Ports
#6 SAE Ports

VOLTAGE
12
24

IMMERSION PROOF "L" TYPE

- IA "I" Coil AMP Superseal - Integral
- ID "I" Coil Deutsch – Integral DT04-2P
- IJ "I" Coil AMP Jr. Timer - Integral
- IM "I" Coil Metri-Pack – Integral

Approximate Coil Weight: .68 lbs. (.31 kg.)

WARNING: the specifications/application data shown in our catalogs and data sheets are intended only as a general guide for the product described (herein). Any specific application should not be undertaken without independent study, evaluation, and testing for suitability.