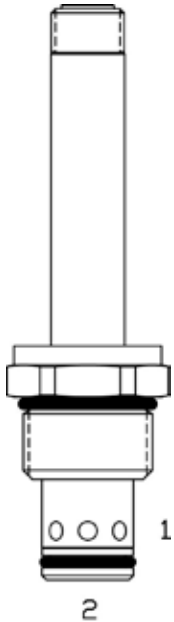


EE-SRD 2 WAY, NORMALLY OPEN, ELECTRO-PROPORTIONAL RELIEF VALVE WITH PRESET MAXIMUM

DESCRIPTION

10 size, 7/8-14 thread, "Delta" series, solenoid operated, 2 way normally open, pilot operated relief valve.

OPERATION

The EE-SRD blocks flow from (2) to (1) until sufficient pressure is present at (2) to offset the lower of: the electrically induced solenoid force or the preset maximum setting. Can be infinitely adjusted across a prescribed range using a variable electric input. Pressure output is proportional to DC current input. This valve is intended for use as a pressure limiting device in demanding applications. Can be used as a solenoid operated relief valve. With no current applied to the solenoid, the valve will free flow from (2) to (1) at approximately 50 PSI.

Note: Backpressure on port (1) becomes additive to the pressure setting at a 1:1 ratio.

FEATURES

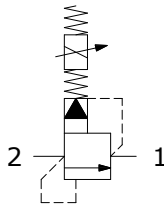
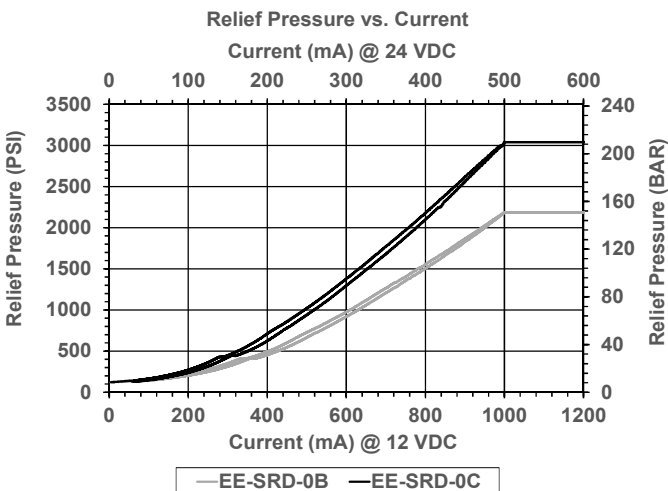
- Efficient wet-armature construction.
- Cartridges are voltage interchangeable.
- Industry common cavity.
- Unitized, molded coil design.
- Continuous duty rated solenoid.
- Optional coil voltages and terminations.

If low voltage is expected on the machine, 12 or 24 volt systems will require the use of 10 volt or 20 volt coils respectively. Consult Factory for availability of these coil options.



For best performance valve must be purged of air. Locate below reservoir or add check valve to return. Recommended vehicle installation is Tube Up or Horizontal after purging. Fastest purging position during bleed/start-up is with tube up.

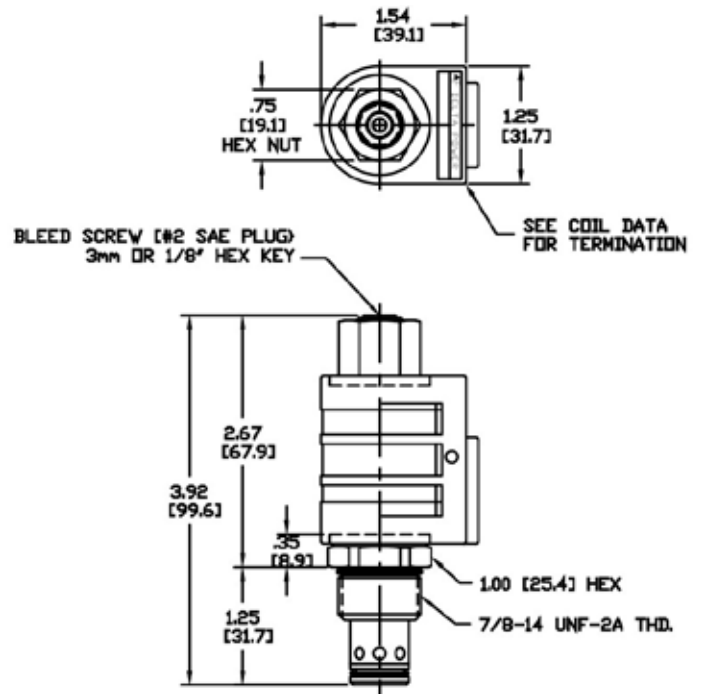
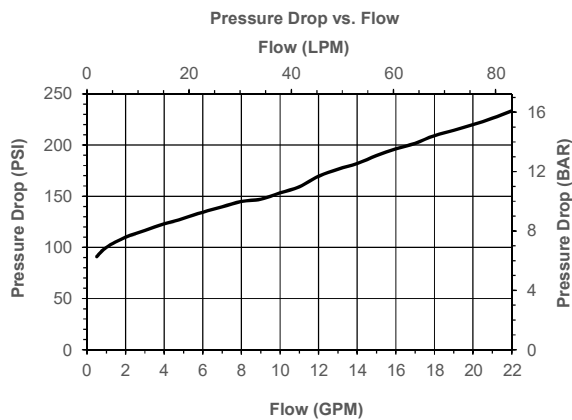
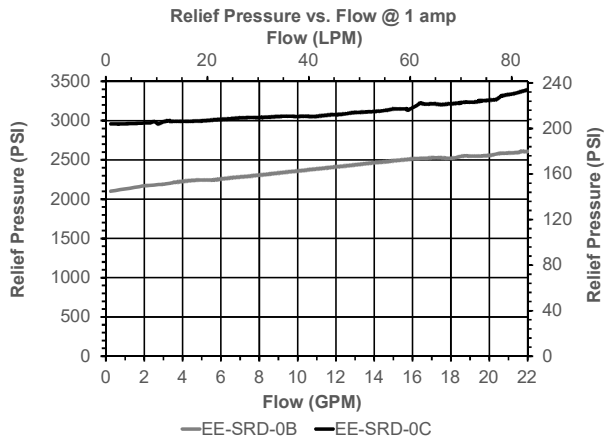
PWM Frequency: 100-200 Hz (200 Hz recommended). For lower minimum or other ranges consult factory

HYDRAULIC SYMBOL

PERFORMANCE

VALVE SPECIFICATIONS

Nominal Flow	0-20 GPM (0-76 LPM)
Operating Range	50-3000 PSI (3-207 bar)
Typical Hysteresis	5%
Viscosity Range	36 to 3000 SSU (3 to 647 cSt)
Filtration	ISO 18/16/13
Media Operating Temp. Range	-40°C to 250°F (-40°C to 120°C)
Weight	.30 lbs (.13 kg)
Operating Fluid Media	General Purpose Hydraulic Fluid
Cartridge Torque Requirements	30 ft-lbs (40.6 Nm)
Coil Nut Torque Requirements	4-6 ft-lbs (5.4-8.1 Nm)
Cavity	DELTA 2W
Cavity Tools Kit	
(form tool, reamer, tap)	40500000
Seal Kit	21191202

WARNING: the specifications/application data shown in our catalogs and data sheets are intended only as a general guide for the product described (herein). Any specific application should not be undertaken without independent study, evaluation, and testing for suitability.

DIMENSIONS



ORDERING INFORMATION

Approximate Coil Weight: .74 lbs (.33 kg)

EE-SRD - - - -		
OPTIONS		BODIES
Buna, 100-2175 PSI range	0B	Blank Without Body
Viton, 100-2175 PSI range	VB	N 3/8" NPT Ports
Buna, 100-3000 PSI range	0C	S #8 SAE Ports
Viton, 100-3000 PSI range	VC	
		VOLTAGE
		06 6 VDC
		12 12 VDC
		24 24 VDC
		36 36 VDC
		48 48 VDC

"P" COIL TERMINATION

- | | |
|------------------------------------|--------------------------------------|
| DL Double Lead | SS Single Spade |
| DT Deutsch on Leads DT04-2P | DS Double Spade |
| ML Metri-Pack on Leads | HC DIN 43650 (Hirschmann) |
| PL Packard on Leads | DI Deutsch – Integral DT04-2P |
| WL Weatherpack on Leads | |

W 6 / 12-2022

WARNING: the specifications/application data shown in our catalogs and data sheets are intended only as a general guide for the product described (herein). Any specific application should not be undertaken without independent study, evaluation, and testing for suitability.