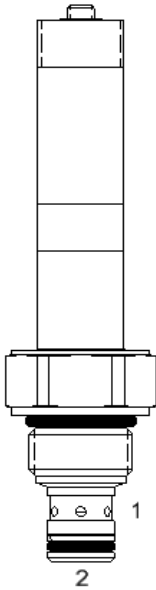


EPB-RBA 2 WAY NORMALLY CLOSED, PROPORTIONAL RELIEF VALVE

DESCRIPTION

8 size, 3/4-16 thread, "Power" series, solenoid operated, 2 way normally closed, proportional direct acting pressure relief valve.

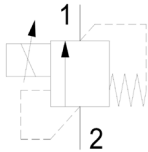
OPERATION

When de-energized, the valve relieves flow from (1) to (2) at maximum set pressure. Pressure reduction is proportional to current applied to the coil.

When fully energized the EPB-RBA allows flow from port (2) to port (1) at a low pressure drop.

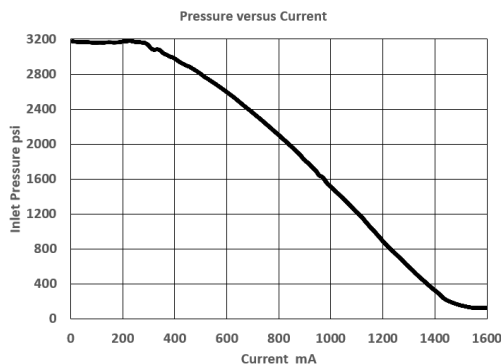
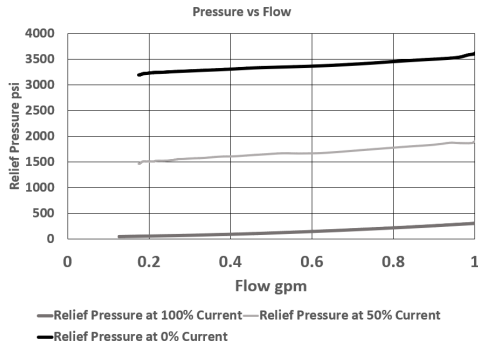
FEATURES

- Efficient wet-armature construction.
- Cartridges are voltage interchangeable.
- Industry common cavity.
- Unitized, molded coil design.
- Continuous duty rated solenoid.
- Optional coil voltages and terminations.

HYDRAULIC SYMBOL


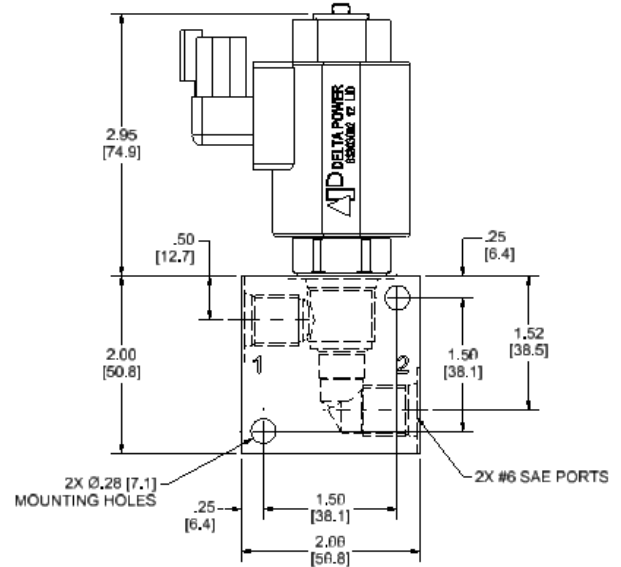
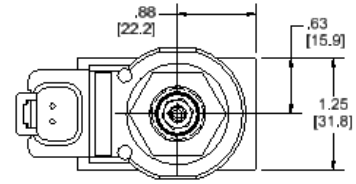
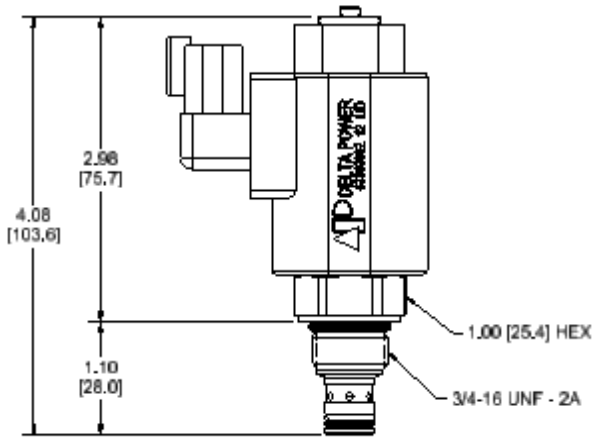
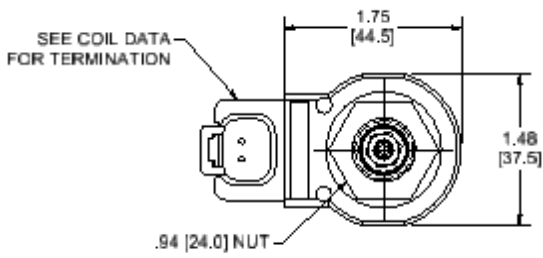
For best performance valve, locate below reservoir or add Check valve to return.

Consult Factory for other coil options. (Note: "L" coil alters valve performance)

PERFORMANCE

VALVE SPECIFICATIONS

Flow Range	1 GPM (4 LPM)
Maximum Pressure	3500 PSI (241 bar)
Controlled Pressure	3200 to 45 PSI (220 to 3 bar)
Typ. Leakage (@80% crack)	1 cu-in/min (16 ml/min)
Hysteresis	±5%
Threshold	10% to 20% of Full Current
Viscosity Range	36 to 3000 SSU (3 to 647 cSt)
Filtration	ISO 18/16/13
Media Operating Temperature Range	-22 to 212° F (-30° to 100° C)
Weight	.58 lbs. (0.26 kg)
Operating Fluid Media	General Purpose Hydraulic Fluid
Cartridge Torque Requirements	30 ft-lbs (40.6 Nm)
Coil Nut Torque Requirements	4-6 ft-lbs (5.4-8.1 Nm)
Cavity	POWER 2W
Cavity Form Tool (Finishing)	40500005
Seal Kit	21191200

DIMENSIONS



ORDERING INFORMATION

EPB-RBA

OPTIONS
 Buna Standard **00**
 Viton Standard **V0**

BODIES
 Without Body
N 1/4 NPT Ports
S #6 SAE Ports

VOLTAGE
12 12 VDC
24 24 VDC

IMMERSION PROOF "L" COIL

IA "I" Coil AMP Superseal - Integral
ID "I" Coil Deutsch - Integral

Approximate Coil Weight: .80 lbs. (0.36 kg.)

WARNING: the specifications/application data shown in our catalogs and data sheets are intended only as a general guide for the product described (herein). Any specific application should not be undertaken without independent study, evaluation, and testing for suitability.