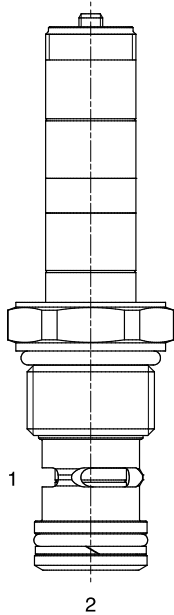


**ET-P2S 2 WAY NORMALLY CLOSED, PROPORTIONAL FLOW CONTROL VALVE**

**DESCRIPTION**

12 size, 1 1/16-12 thread, "TWELVE" series, solenoid operated, 2 way normally closed, proportional flow control valve.

**OPERATION**

When de-energized the ET-P2S blocks flow at ports (2) and (1). When energized, the valve allows flow from (1) to (2). Flow is proportional to the current applied to the coil. A compensator must be used to create a pressure compensated flow control function.

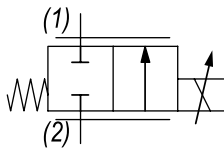
**OPERATION OF MANUAL OVERRIDE OPTION:** to override, turn the manual override screw counterclockwise. To release turn the manual override screw clockwise.

**FEATURES**

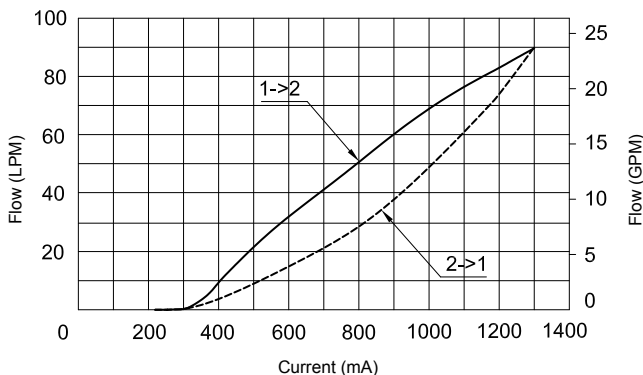
- Efficient wet-armature construction.
- Cartridges are voltage interchangeable.
- Industry common cavity.
- Unitized, molded coil design.
- Continuous duty rated solenoid.
- Optional coil voltages and terminations.



*Curves are attained with Tecnomat QC-CP3 compensator.*

**HYDRAULIC SYMBOL**

**PERFORMANCE**
**Flow vs. Current**

Coil 12 VDC - Press. Drop = 14 bar - Oil 46 cSt (217 SSU) @ 50°C (122°F)


**VALVE SPECIFICATIONS**

Flow Range	See curves for various versions
Max System Pressure	3500 PSI (241 bar)
Leakage	Max 50 cc/min at 245 bar
Hysteresis	±3%
Viscosity Range	36 to 3000 SSU (3 to 647 cSt)
Filtration	ISO 18/16/13
Media Operating Temp. Range	-30°C / +100°C
Weight	.72 lbs (.32 kg)
Operating Fluid Media	General Purpose Hydraulic Fluid
Cartridge Torque Requirements	37 ft-lbs (50 Nm)
Coil Nut Torque Requirements	2-3 ft-lbs (3-4 Nm)
Cavity	TWELVE 2W
Cavity Tools Kit (form tool, reamer, tap)	40500032
Seal Kit	21191200

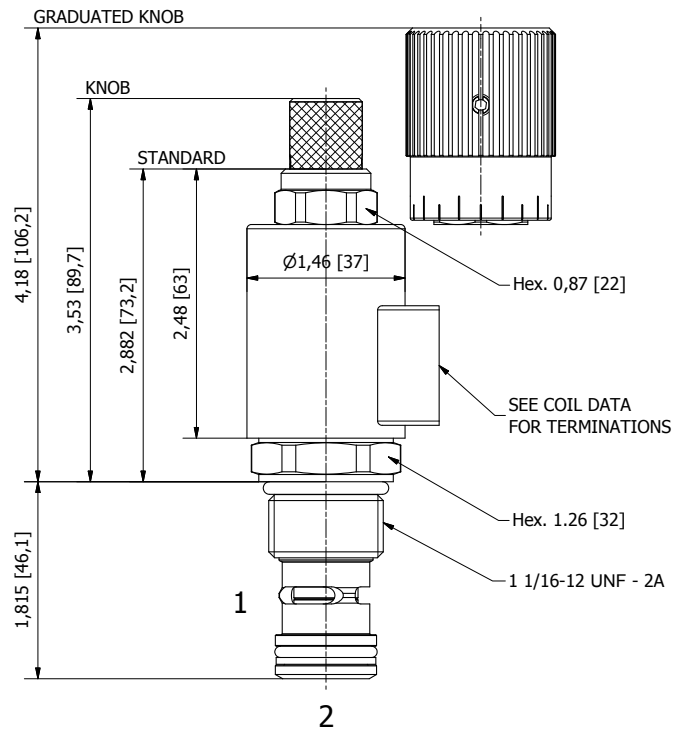
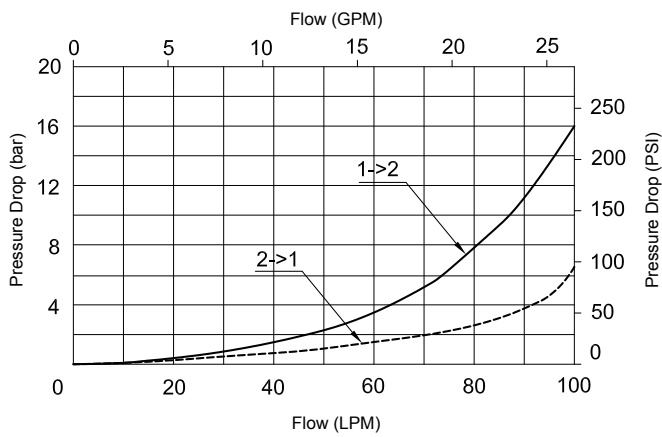
**COIL SPECIFICATIONS**

Current Supply Characteristics	PWM (Pulse Width Modulation)
Rated Current Range	400-1400 mA
PWM or Super-Imposed	
Dither Frequency	100-150 Hz
Coil Resistance (12 VDC)	7.2 Ohm ±5% at 68°F (20°C)

**DIMENSIONS**

**Pressure Drop**

With valve fully open - Oil 46 cSt (217 SSU) @ 50°C (122°F)



(for bodies style and sizes see section "Accessories")

**ORDERING INFORMATION**

Approximate Coil Weight: .47 lbs (.21 kg)

**ET-P2S - - - - -**

**OPTIONS**

- Buna Standard **C0** Up to 90 l/min
- Buna, Screw Type Override (Knob) **CS** Up to 90 l/min
- Buna, Screw Type Override (Grad. Knob) **CK** Up to 90 l/min

**BODIES**

- Blank** Without Body
- N** 3/4" BSP Ports
- S** #8 SAE Ports

**VOLTAGE**

- 12** 12 VDC
- 24** 24 VDC

**"F" COIL TERMINATION**

- HC** DIN 43650 (Hirschmann)
- DI** Deutsch-Integral DT04-2P
- JT** AMP Jr. Timer

**NOTES:** 1) Flows refer to a 14 bar Delta P  
2) For other seals, consult factory

**WARNING:** the specifications/application data shown in our catalogs and data sheets are intended only as a general guide for the product described (herein). Any specific application should not be undertaken without independent study, evaluation, and testing for suitability.