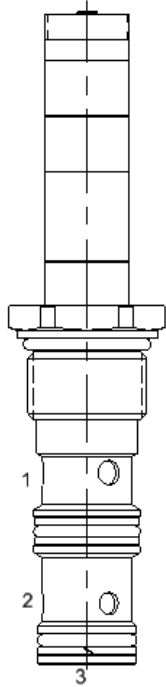


ETU-FAP 3 WAY PRESSURE COMPENSATED PRIORITY TYPE PROPORTIONAL FLOW REGULATOR

DESCRIPTION

12 size, 1 1/16-12 thread, Twelve series, solenoid operated, normally closed, spool style, 3-way priority type pressure compensated proportional flow regulator. It can also be used as a restrictive-type 2-way, pressure compensated flow regulator when the bypass line (Port 2) is blocked.

OPERATION

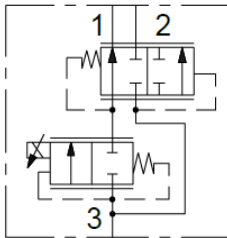
ETU-FAP maintains a constant flow rate out of (1) regardless of load pressure variations in the circuit downstream of (3) and regardless of bypass pressure variations in the circuit downstream of (2). Excess flow bypasses out of (2). When coil is not energized, there is no regulated flow out of (1).

OPERATION OF MANUAL OVERRIDE OPTION:

To override, turn the manual override screw counterclockwise. To release turn the manual override screw clockwise.

FEATURES

- Hardened parts for long life.
- Industry common cavity.
- Excellent linearity and low hysteresis characteristics.
- Cartridges are voltage interchangeable.
- Optional coil voltages and terminations available.
- Unitized, molded coil design.
- Continuous duty rated solenoid.

HYDRAULIC SYMBOL


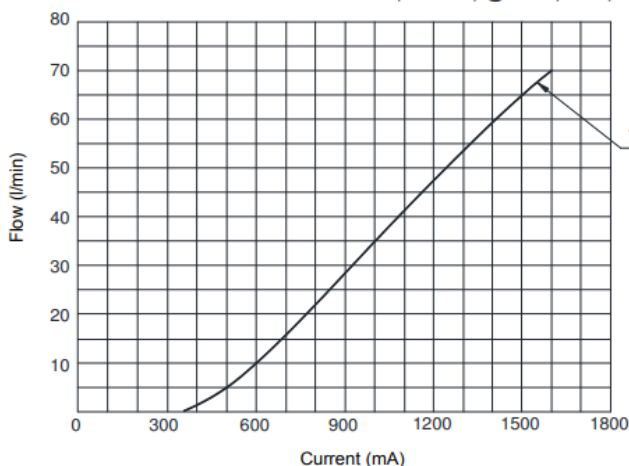
It can be used as a restrictive 2-way pressure-compensated flow control valve, blocking bypass line port (2)

100-150 Hz PWM or 100-200 Hz Dither Frequency Recommended.

Consult Factory for other coil options (Note: "T" coil alters valve performance).

PERFORMANCE
Flow vs. Current

Coil 12 VDC - 130 Hz PWM - Oil 26 cSt (121 SSU) @ 50°C (104°F)


VALVE SPECIFICATIONS

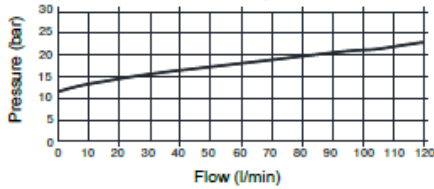
Flow Range	16 GPM Maximum
PSID	See Pressure Drop Curve
Max System Pressure	3500 PSI (241 bar)
Hysteresis	±5%
Threshold	20% to 35% of Full Current
Viscosity Range	36 to 3000 SSU (3 to 647 cSt)
Filtration	ISO 18/16/13
Media Operating Temperature Range	-22° to 212° F (-30° to 100° C)
Weight	.75 lbs. (0.34 kg)
Operating Fluid Media	General Purpose Hydraulic Fluid
Cartridge Torque Requirements	37 ft-lbs (50 Nm)
Coil Nut Torque Requirements	2-3 ft-lbs (3-4 Nm)
Cavity	TWELVE SERIES 3W
Cavity Form Tool (Finishing)	40500034
Coil Kit	21191305

WARNING: the specifications/application data shown in our catalogs and data sheets are intended only as a general guide for the product described (herein). Any specific application should not be undertaken without independent study, evaluation, and testing for suitability.

DIMENSIONS

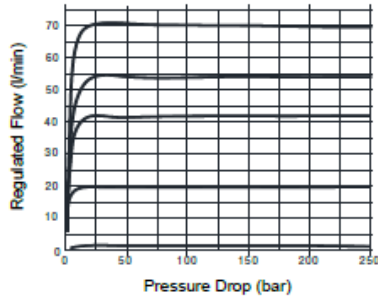
Pressure Drop 3→2 (bar)

Oil 26 cSt (121 SSU) @ 50°C (104°F)



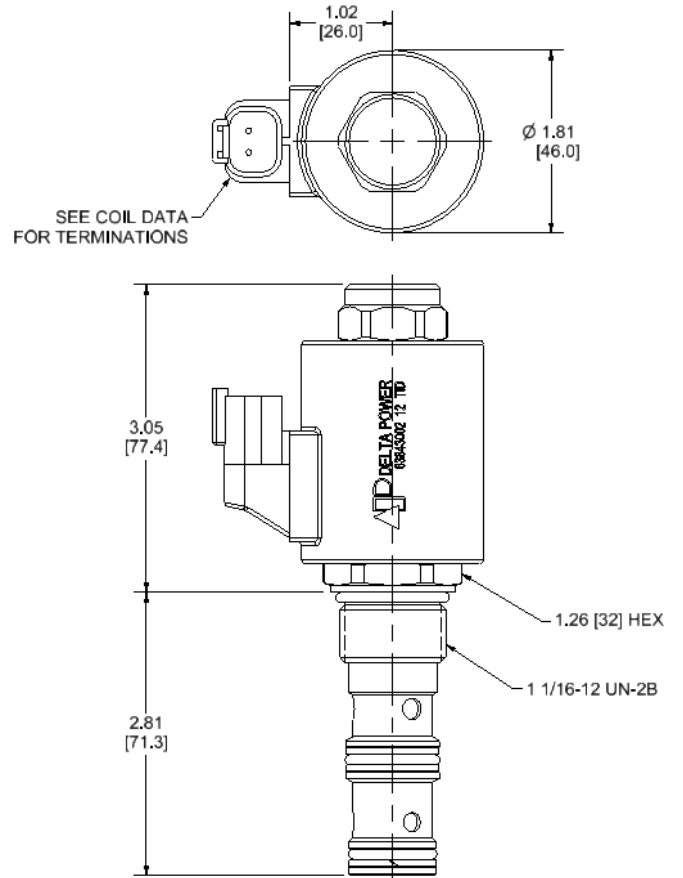
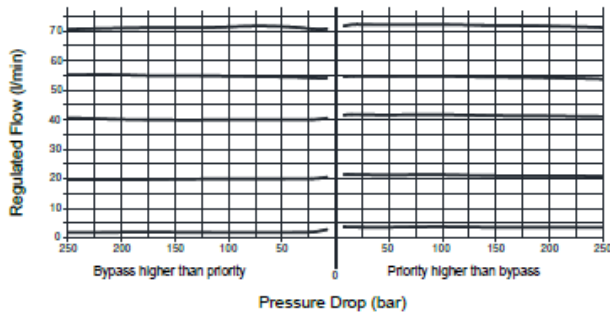
Regulated Flow vs. Pressure

2 WAYS - Coil 12 VDC - 130 Hz PWM - Oil 26 cSt (121 SSU) @ 50°C (104°F)



Pres. Compensation from Inlet to Work Port or Bypass Port

3 WAYS - Coil 12 VDC - 130 Hz PWM - Oil 26 cSt (121 SSU) @ 50°C (104°F)



ORDERING INFORMATION

Approximate Coil Weight: .80 lbs. (0.36 kg.)

ETU-FAP

OPTIONS

Buna Standard
Buna, Screw Type Override (Knob)

00 Up to 16 GPM
0S Up to 16 GPM

Blank
N
S

BODIES

Without Body
3/8 NPTF Ports
#8 SAE Ports

VOLTAGE

12 12 VDC
24 24 VDC

IMMERSION PROOF "T" COIL

IA "I" Coil AMP Superseal - Integral
ID "I" Coil Deutsch - Integral

WARNING: the specifications/application data shown in our catalogs and data sheets are intended only as a general guide for the product described (herein). Any specific application should not be undertaken without independent study, evaluation, and testing for suitability.