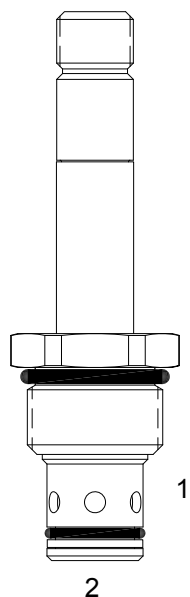


**DE-S2F PILOT OPERATED POPPET, 2 WAY NORMALLY CLOSED, SOFT SEAT**

**DESCRIPTION**

10 size, 7/8-14 thread, "Delta" series, solenoid operated, 2 way normally closed, pilot operated soft seat poppet valve with reverse flow de-energized.

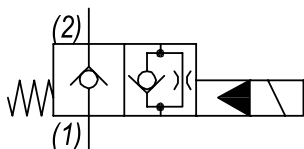
**OPERATION**

When de-energized the DE-S2F blocks flow from (1) to (2) and allows reverse flow from (2) to (1). When energized the valve allows flow from (1) to (2) but restricts reverse flow from (2) to (1).

**OPERATION OF MANUAL OVERRIDE OPTION:** to override, pull knob out. On the detented version, after pulling knob out twist 180 degrees and release. The valve will remain in that position.

**FEATURES**

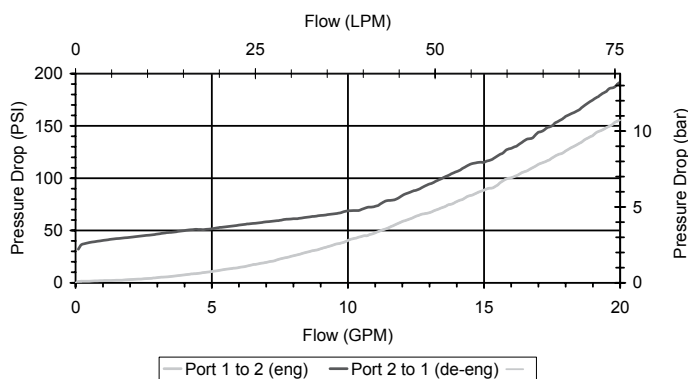
- Soft seat for ultra low leakage.
- Efficient wet-armature construction.
- Cartridges are voltage interchangeable.
- Manual override option.
- Industry common cavity.
- Unitized, molded coil design.
- Continuous duty rated solenoid.
- Optional coil voltages and terminations.
- Optional "I" Coil: Weatherproof, Thermal Shock, Immersion Safe.

**HYDRAULIC SYMBOL**


*Operational shift limit 10 GPM (38 LPM).  
For shifted flow performance consult chart.*

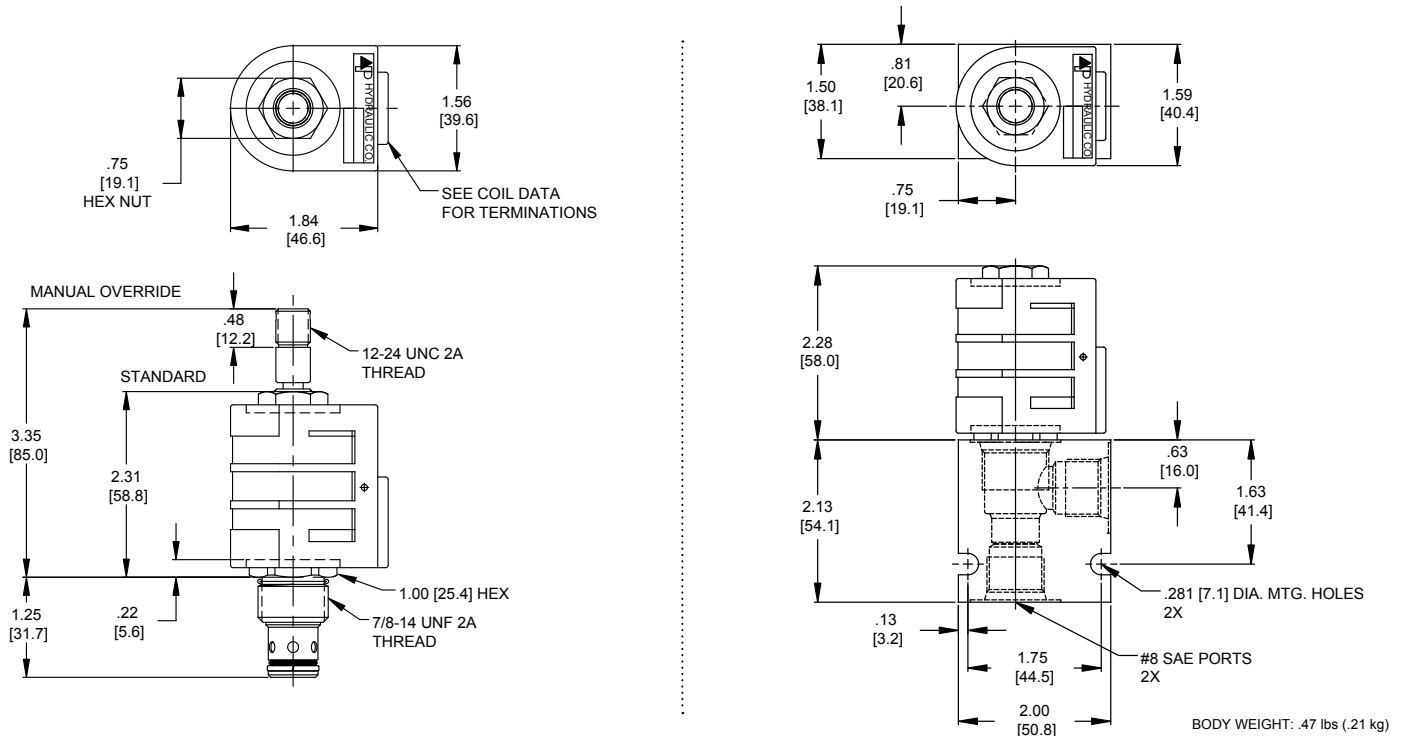
**PERFORMANCE**

Actual Test Data (Cartridge Only)


**VALVE SPECIFICATIONS**

Nominal Flow	10 GPM (38 LPM)
Rated Operating Pressure	1000 PSI (69 bar)
Typical Internal Leakage (150 SSU)	Negligible
Viscosity Range	36 to 3000 SSU (3 to 647 cSt)
Filtration	ISO 18/16/13
Media Operating Temp. Range	32° to 160°F (0° to 70°C)
Weight	.25 lbs (.11 kg)
Operating Fluid Media	General Purpose Hydraulic Fluid
Cartridge Torque Requirements	30 ft-lbs (40.6 Nm)
Coil Nut Torque Requirements	4-6 ft-lbs (5.4-8.1 Nm)
Cavity	DELTA 2W
Cavity Tools Kit	
(form tool, reamer, tap)	40500000
Seal Kit	21191200

**WARNING:** the specifications/application data shown in our catalogs and data sheets are intended only as a general guide for the product described (herein). Any specific application should not be undertaken without independent study, evaluation, and testing for suitability.

**DIMENSIONS**

**ORDERING INFORMATION**

Approximate Coil Weight: .74 lbs (.33 kg)

DE-S2F

**OPTIONS**

Buna Standard	00
Viton Standard	V0
Buna, Override, Detent	0M
Viton, Override, Detent	VM
Buna, Screen	A0
Viton, Screen	W0
Buna, Override, Non-Detent	B1
Viton, Override, Non-Detent	V1
Buna, Screen, Override, Non-Detent	B3
Viton, Screen, Override, Non-Detent	V3
Buna, Screen, Override, Detent	B4
Viton, Screen, Override, Detent	V4

**Note: use screen only if flow direction is from (1) to (2)**

**"D" COIL TERMINATION**

(All DC Except as Noted)

<b>DL</b> Double Lead
<b>DT</b> Deutsch on Leads DT04-2P
<b>ML</b> Metri-Pack on Leads
<b>PL</b> Packard on Leads
<b>WL</b> Weatherpack on Leads

<b>SS</b> Single Spade
<b>DS</b> Double Spade
<b>HC</b> DIN 43650 (Hirschmann) - (AC&DC)
<b>CL</b> Conduit Lead - (AC Only)
<b>DI</b> Deutsch - Integral DT04-2P

**BODIES**

<b>Blank</b> Without Body
<b>N</b> 3/8 NPTF Ports
<b>S</b> #8 SAE Ports

**VOLTAGE**

<b>06</b> 6 VDC
<b>12</b> 12 VDC
<b>24</b> 24 VDC
<b>36</b> 36 VDC
<b>48</b> 48 VDC
<b>25</b> 24 VAC
<b>11</b> 120 VAC
<b>22</b> 220 VAC
<b>44</b> 440 VAC

**IMMERSION PROOF "D" TYPE**

<b>IA</b> "I" Coil AMP Superseal - Integral
<b>ID</b> "I" Coil Deutsch - Integral DT04-2P
<b>IJ</b> "I" Coil AMP Jr. Timer - Integral
<b>IM</b> "I" Coil Metri-Pack - Integral